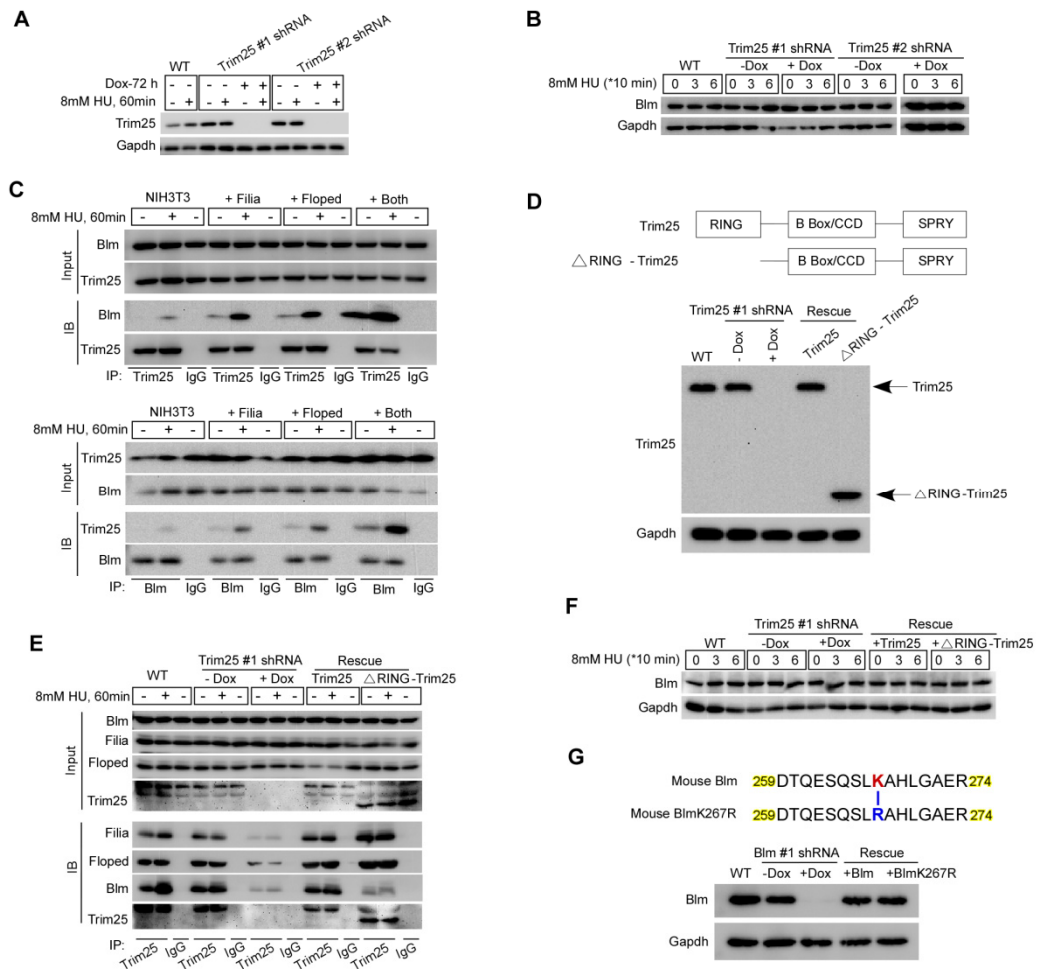


## Supplementary information, Figure S8



**Figure S8** Trim25 promotes Blm recruitment to replication forks downstream of Filia-Floped scaffold. **(A)** Efficient knockdown of *Trim25* by two individual Dox-inducible shRNAs in ESCs. **(B)** Depletion of Trim25 had no influence on the protein expression of Blm. **(C)** Ectopic expression of Filia, Floped, or Filia plus Floped in NIH3T3 cells enhanced the interaction of Blm and Trim25. **(D)** Immunoblotting confirmed the expression of Trim25 and  $\Delta$ RING-Trim25 in complemented mESCs. **(E)**  $\Delta$ RING-Trim25 mutant proteins efficiently interacted with Filia and Floped, but not Blm. **(F)** The expression level of Blm was comparable

in WT, *Trim25*-knockdown, Trim25-rescued (Trim25) and  $\Delta$ RING-Trim25-rescued ( $\Delta$ RING-Trim25) ESCs. (G) Forced expression of WT Blm and BlmK267R mutant in *Blm*-knockdown ESCs.