

Supplementary information, Figure S9

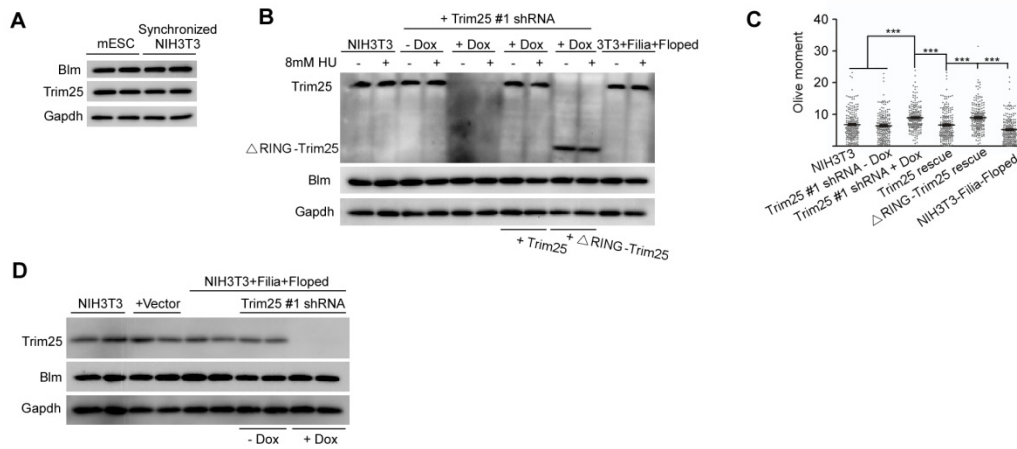


Figure S9 Blm-Trim25 pathway operates in differentiated cells with relatively lower efficiency than in ESCs. **(A)** The protein expression of Blm and Trim25 was comparable between mESCs and NIH3T3 cells synchronized at S phase. **(B)** Immunoblotting confirmed the expression of Trim25 and Δ RING-Trim25 in *Trim25*-knockdown NIH3T3 cells. **(C)** Neutral comet assay revealed that Trim25 depletion in NIH3T3 cells increased the level of DNA double strand breaks under normal culture condition. This defect could be rescued by WT Trim25, but not Δ RING-Trim25 mutant. **(D)** The efficient knockdown of *Trim25* in NIH3T3 cells co-expressing Filia and Floped. Data are represented as mean \pm SEM. *** $P < 0.001$.