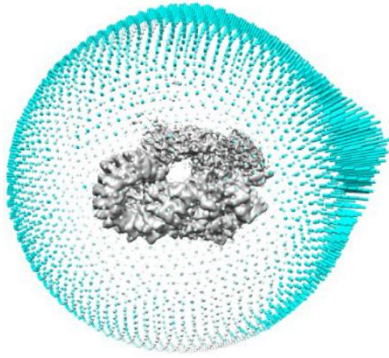
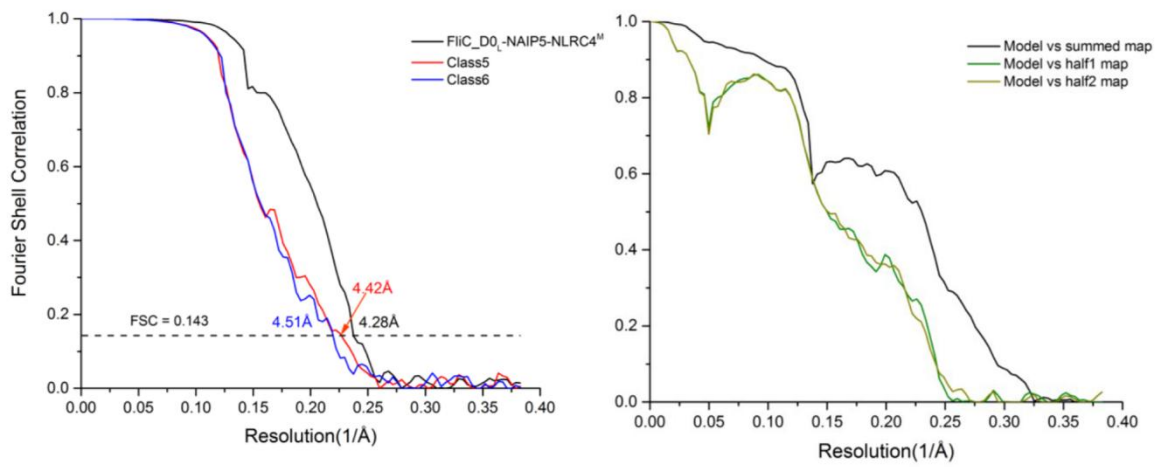
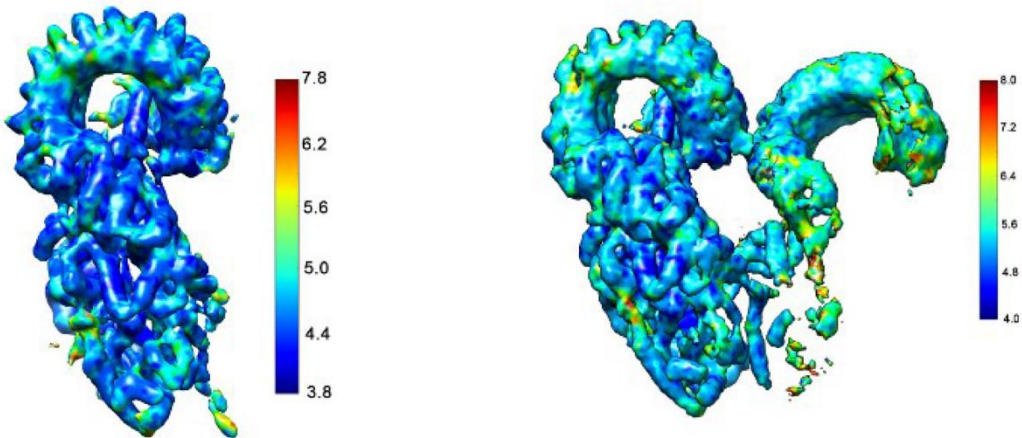


A**B****C**

Supplementary information, Figure S3. Cryo-EM analysis of the FliC_D0_L-NAIP5-NLRC4^M complex

(A) Euler angle distributions of particles used for the final reconstruction of the FliC_D0_L-NAIP5-NLRC4^M complex. Each cylinder represents one view and its size is proportional to the number of particles represented.

(B) Left: Gold-standard FSC curves of the final reconstructions of the FliC_D0_L-NAIP5-NLRC4^M complex with different conformations. Right: FSC curves for the cross-validation of the atomic models of the FliC_D0_L-NAIP5-NLRC4^M complex.

(C) The final EM density map (left) and the Class5 EM density map (right) of the FliC_D0_L-NAIP5-NLRC4^M complex with color coded to show the local resolution as estimated by ResMap.