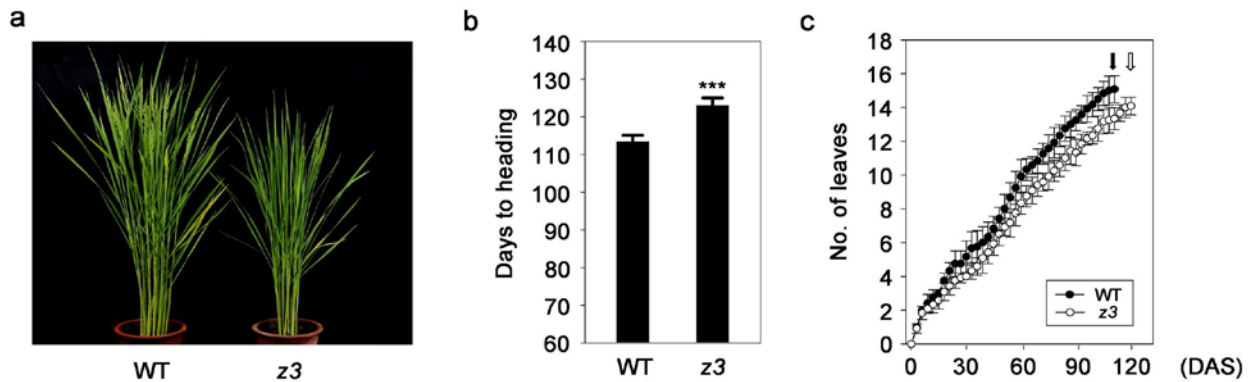


**Additional Files – Kim et al.**



**Additional File 1: Fig. S1** Late flowering phenotypes of the *z3* mutant.

**a** Flowering phenotypes of the 117-day-old WT and *z3* mutant grown under natural long day conditions (14 h light/day, 37° N latitude) in the paddy field. **b** Days to heading of the WT and the *z3* mutant in natural long day conditions. Means and SD were obtained from 15 plants of each genotype. Error bars indicate SD. Differences between means were compared using Student's *t*-test (\*\*\*)  $P < 0.001$ . **c** Comparison of leaf emergence rates between the wild type and the *z3* mutants grown under long-day conditions (14.5 h-light/9.5 h-dark) in the growth chamber. Mean and standard deviation values are shown ( $n=10$ ). Leaf emergence rate was calculated according to the methods described by Itoh et al. (1998). The average heading dates of the wild type and the *z3* mutants are shown by closed and open arrows, respectively.