

Supplemental Information

Table S1: Number of Births by Health Program and Year

	Total Number of Births	Births in Area Covered by FHSteam	Percentage of Births Covered by PSF
2003 ^{a)}	1,960	224	11.4%
2004	2,761	454	16.4%
2005	3,271	644	19.7%
2006	3,047	524	17.2%
2007	2,848	547	19.2%
2008	2,714	559	20.6%
2009	2,804	665	23.7%
2010	2,796	781	27.9%
2011	3,015	936	31.0%
2012 ^{b)}	2,731	880	32.2%

Notes: a) Birth records start on April 1, 2003 b) Excluding births from December 2012 due to incomplete mortality data – at the time of the study mortality data from 2013 was not available from the vital registration system yet.

Table S2: Child Mortality by Cause of Death

Cause of Death	<u>Age at death < 28D</u>		<u>Age at death ≥ 28D</u>		<u>All ages</u>	
	<i>Cases</i>	<i>(%)</i>	<i>Cases</i>	<i>(%)</i>	<i>Cases</i>	<i>%</i>
Neonatal infections	34	28.3	21	25.0	55	27.0
Congenital anomalies	25	20.8	27	32.1	52	25.5
Prematurity	36	30.0	1	1.2	37	18.1
Asphyxia and birth trauma	21	17.5	2	2.4	23	11.3
Cardiovascular, endocrine & nervous system	1	0.8	19	22.6	20	9.8
Infectious diseases	3	2.5	10	11.9	13	6.4
Other (incl. cancer and malnutrition)	0	0.0	4	4.8	4	2.0
Total	120	100	84	100	204	100.0

Figure S1: Spatial Location of Study Site (Butantã-Jaguare) within the larger São Paulo Municipality

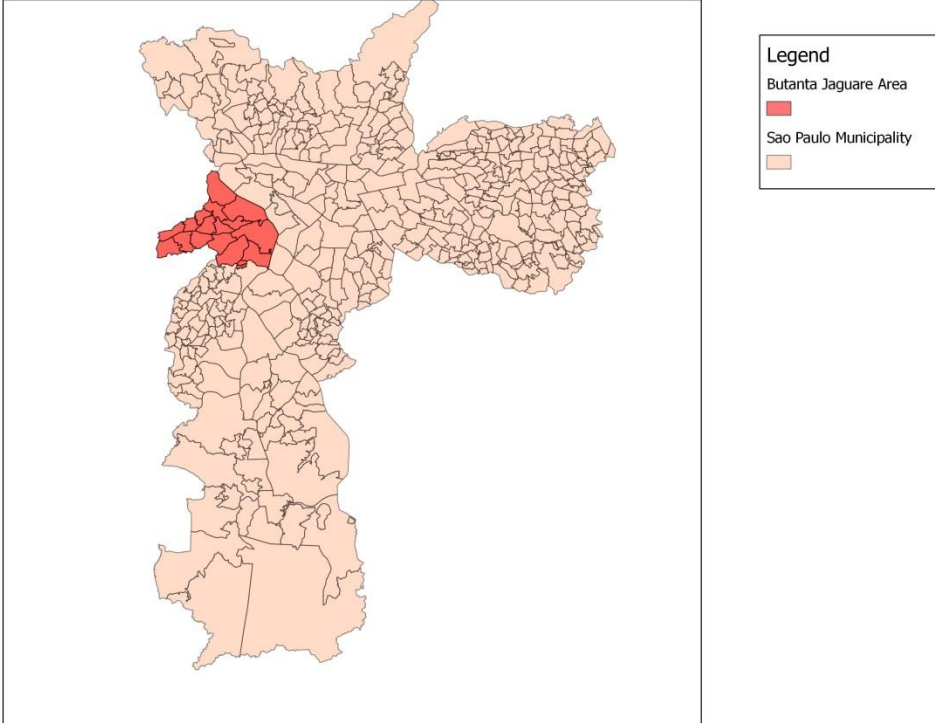


Figure S2: FHSCoverage 2012

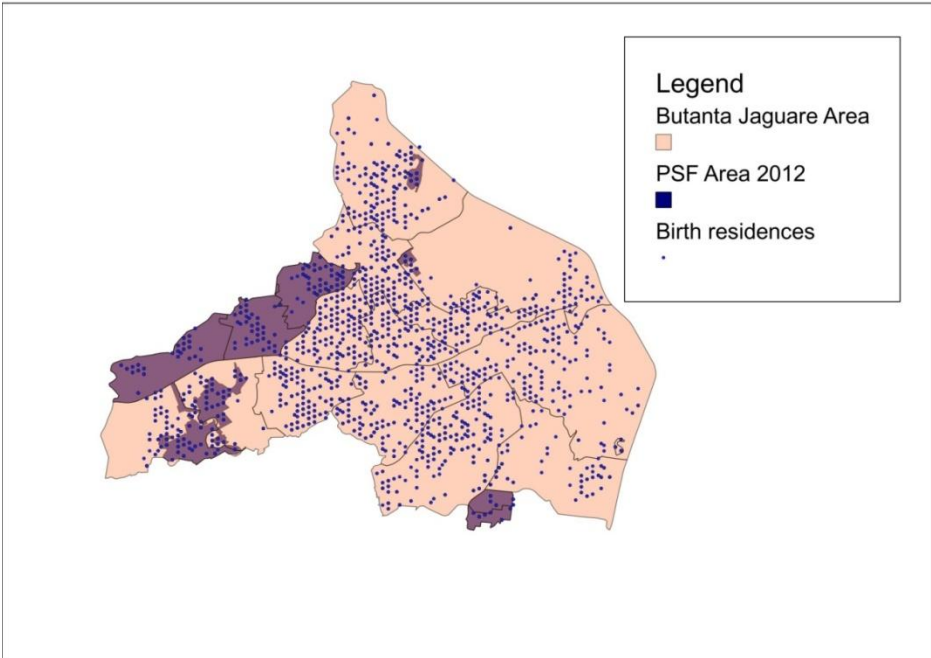
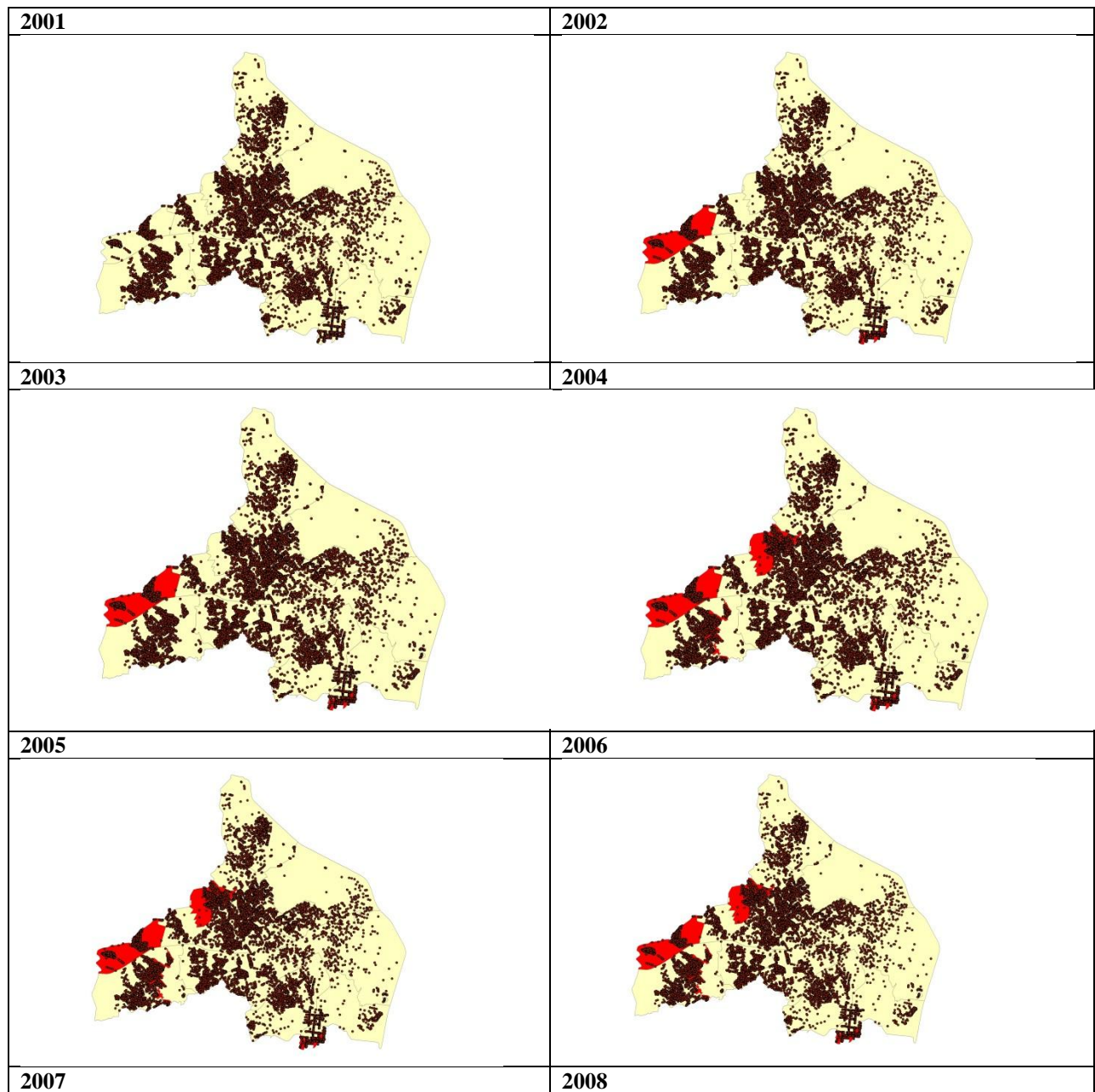


Figure S3: Spatial Coverage over Time



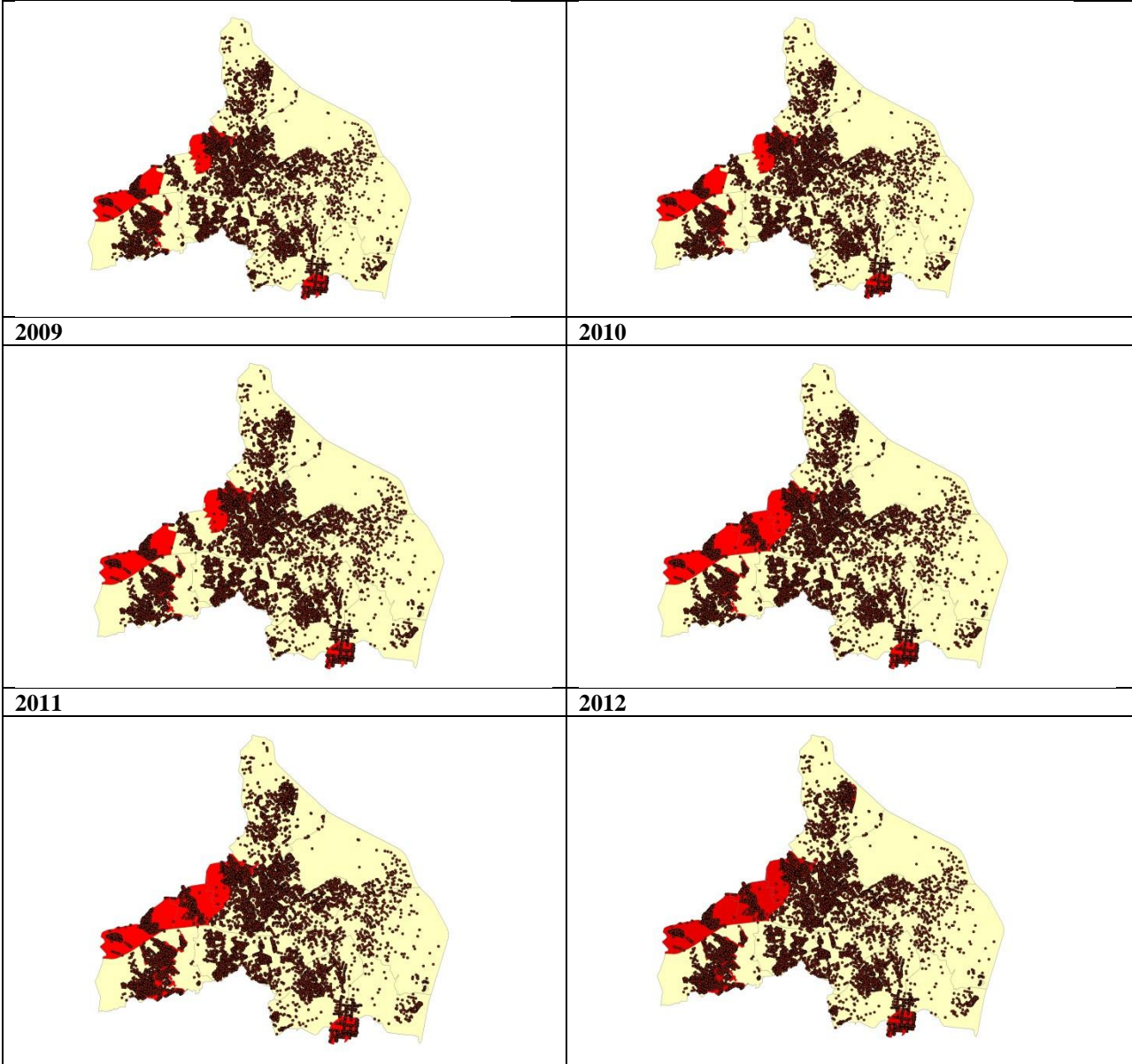


Figure S4 Child Mortality Impact by Birth Cohort

