

Supplementary Online Content

Mu EW, Lewin JM, Stevenson ML, Meehan SA, Carucci JA, Gareau DS. Use of digitally stained multimodal confocal mosaic images to screen for nonmelanoma skin cancer. *JAMA Dermatol*. Published online September 7, 2016. doi:10.1001/jamadermatol.2016.2997.

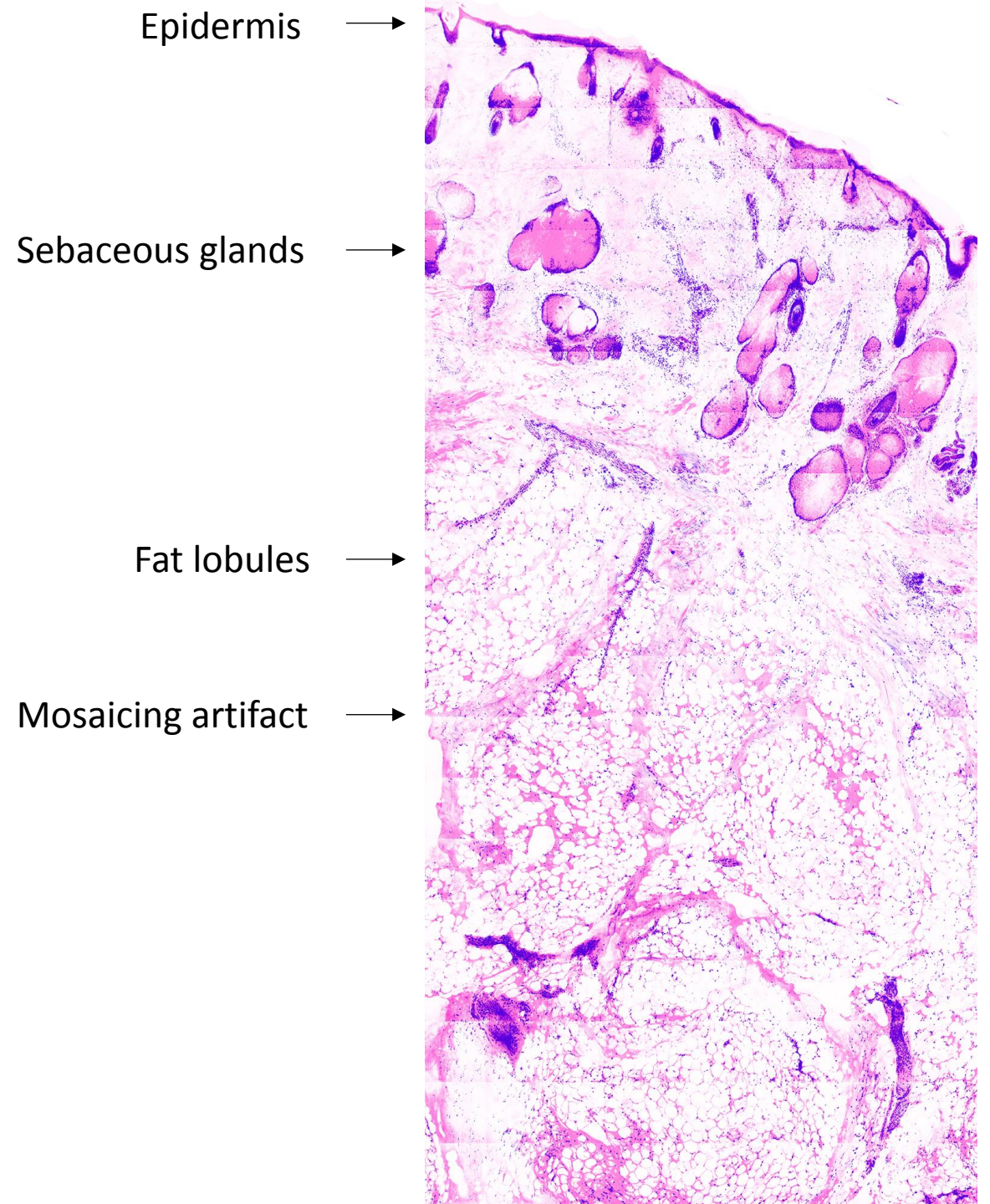
eAppendix. Training module: evaluation of digitally stained multimodal confocal mosaics for screening non-melanoma skin cancer

This supplementary material has been provided by the authors to give readers additional information about their work.

Training Module

Evaluation of Digitally Stained Multimodal Confocal Mosaics for
Screening Non-melanoma Skin Cancer

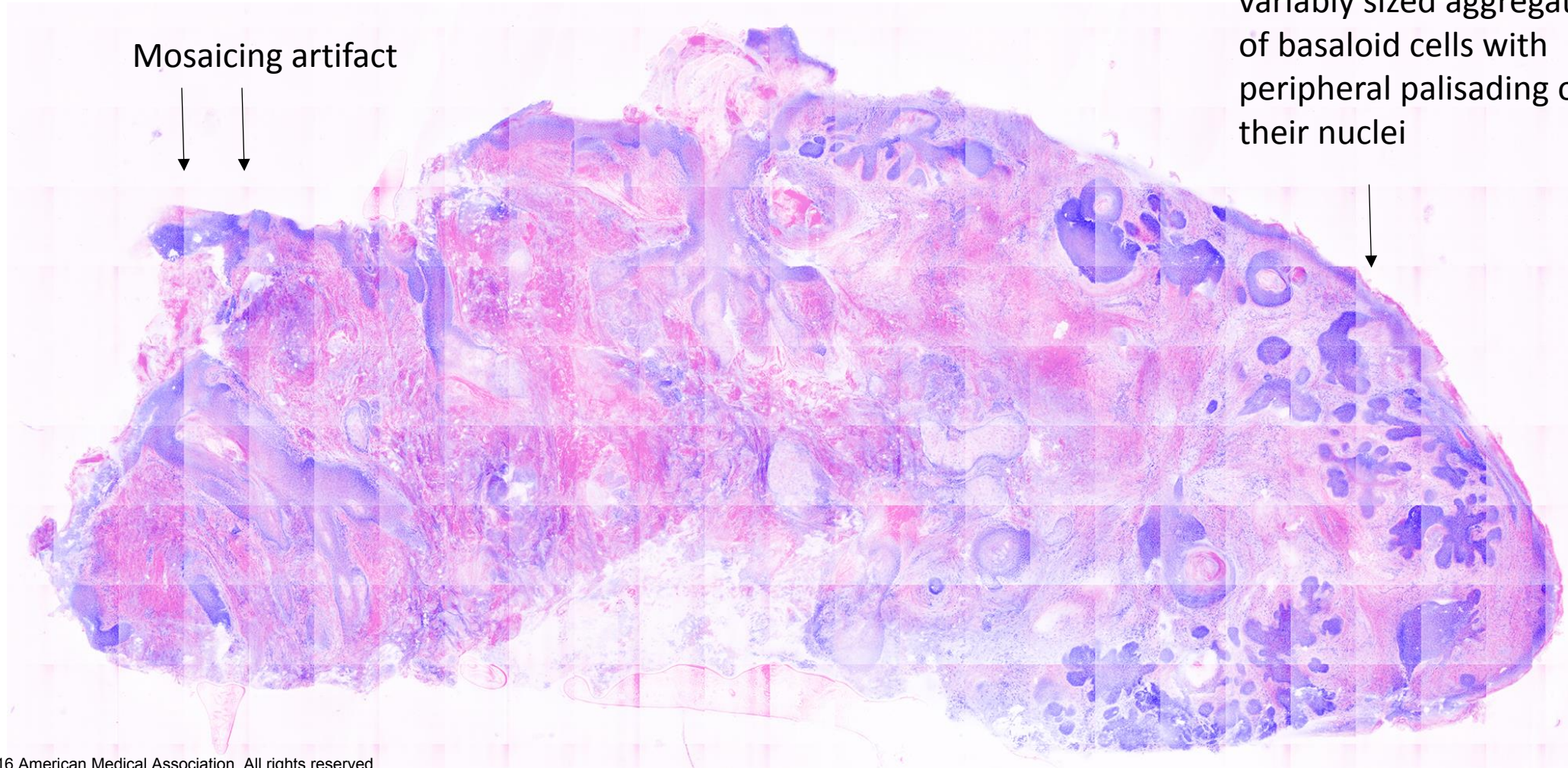
Negative Margin Example 1



Negative Margin Example 2



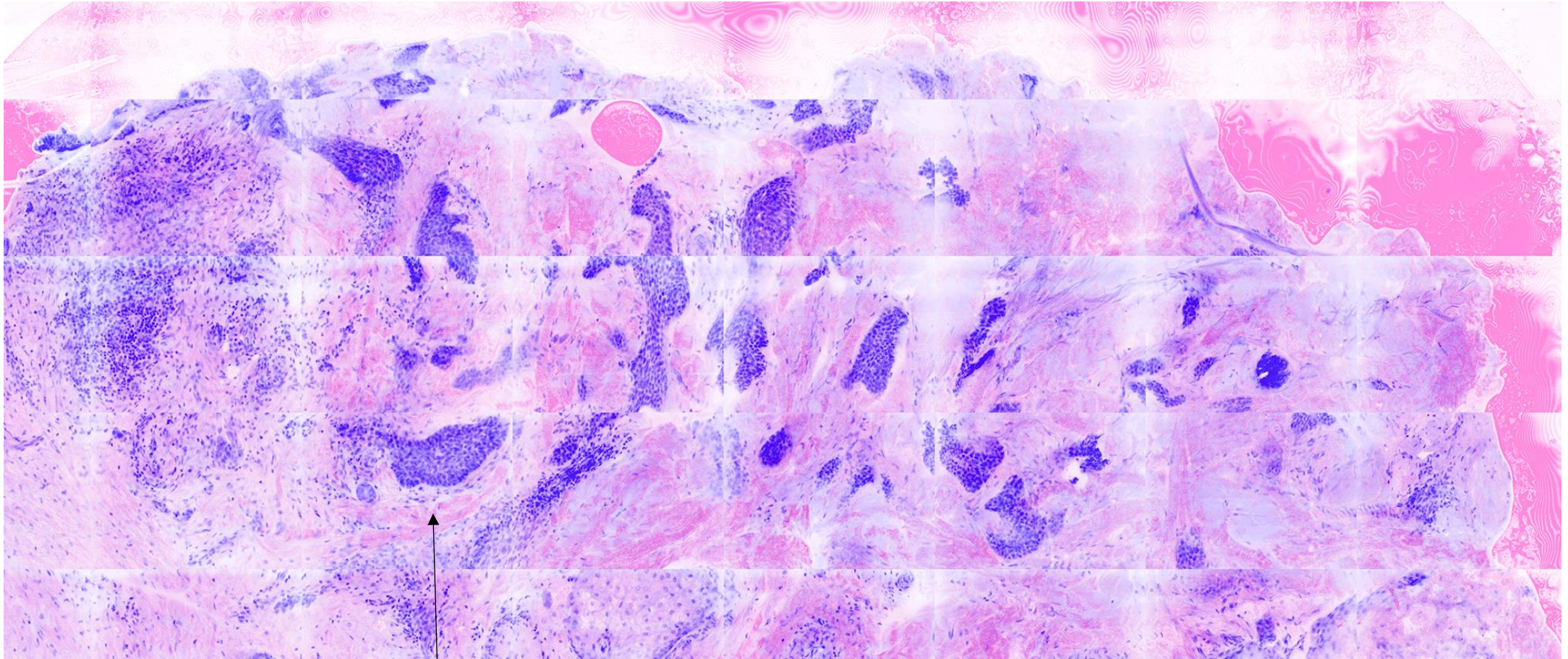
Basal Cell Carcinoma Example 1



Mosaicing artifact

Basal cell carcinoma:
variably sized aggregates
of basaloid cells with
peripheral palisading of
their nuclei

Basal Cell Carcinoma Example 2

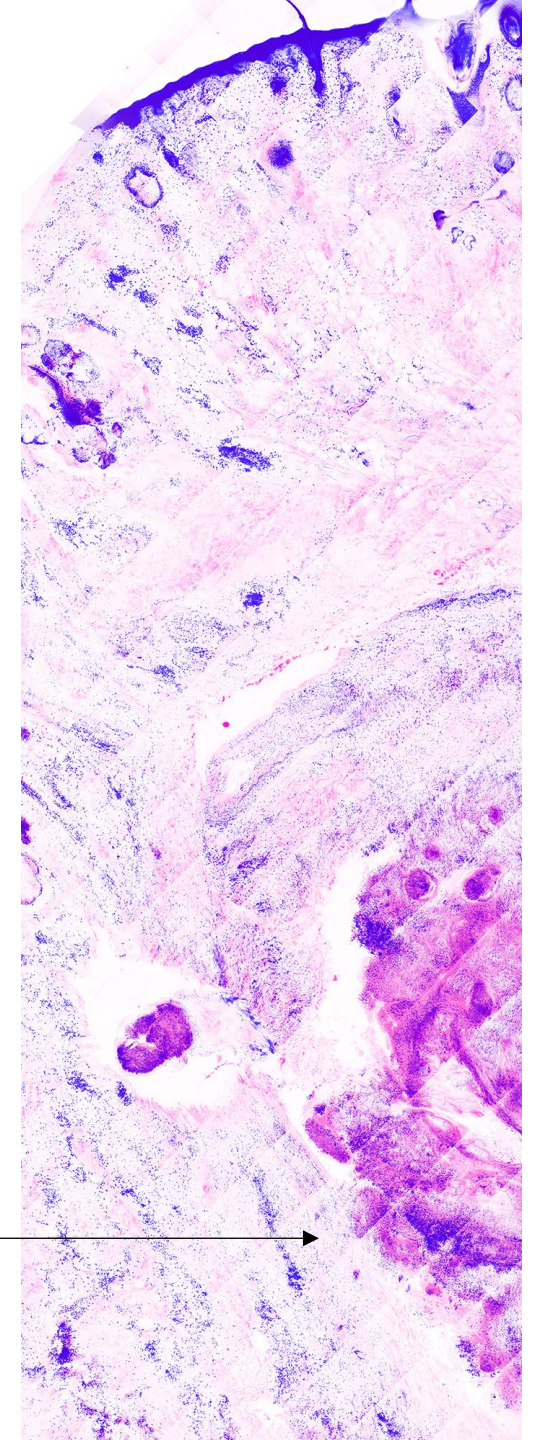


Basal cell carcinoma:

variably sized aggregates of basaloid cells with peripheral palisading of their nuclei

Squamous Cell Carcinoma Example 1

Squamous cell carcinoma:
Irregularly shaped aggregates of atypical keratinocytes with squamous pearls



Squamous Cell Carcinoma Example 2

Squamous cell cancer:
Irregularly shaped
aggregates of atypical
keratinocytes with
squamous pearls

Mosaicing artifact

Uneven staining

