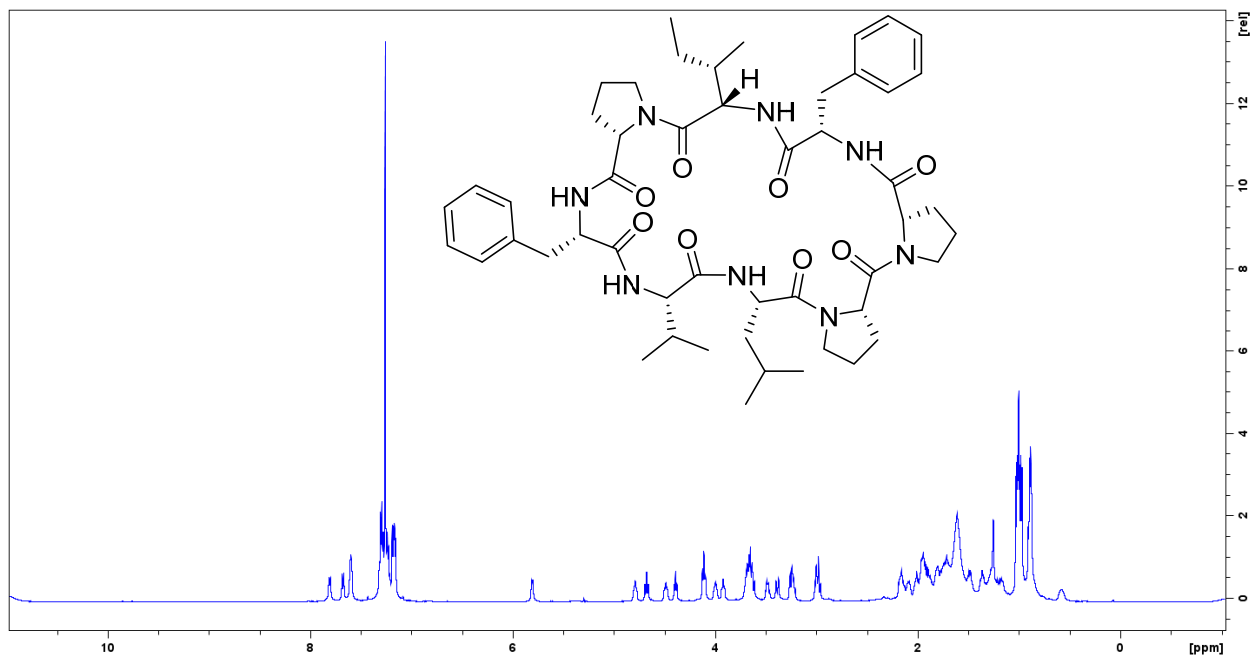


SUPPORTING INFORMATION

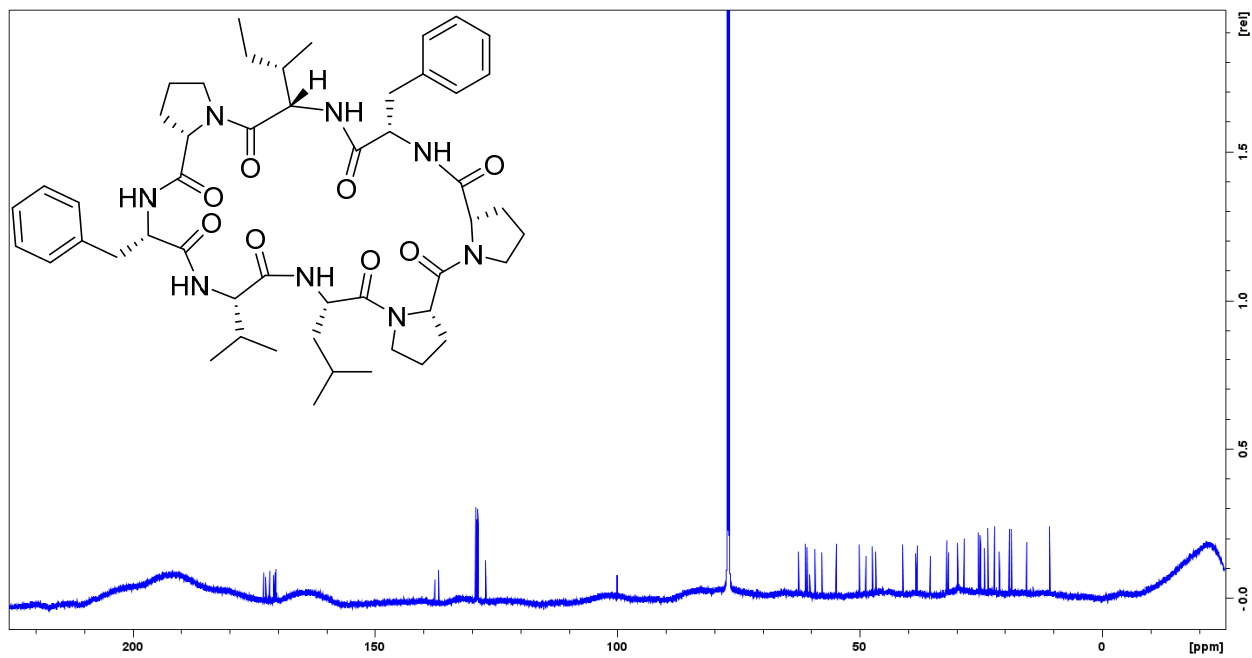
All NMR spectra were recorded in CDCl₃ and at 298 K, 600 MHz (¹H) and 150 MHz (¹³C).

TABLE OF CONTENTS

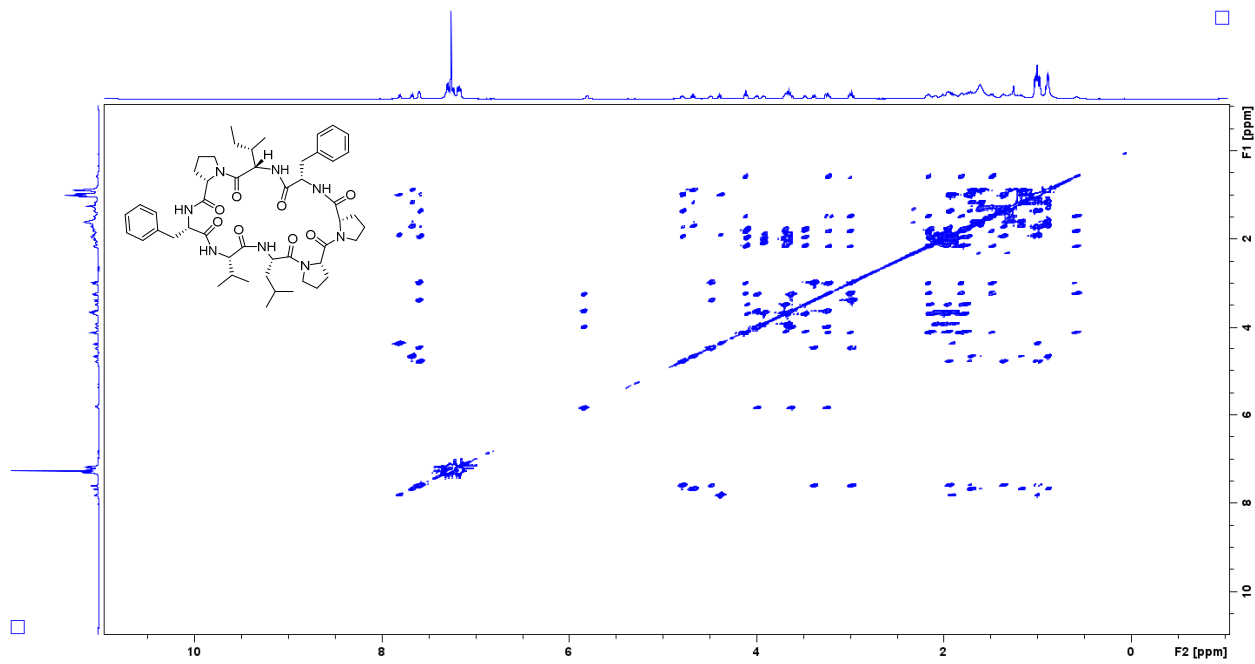
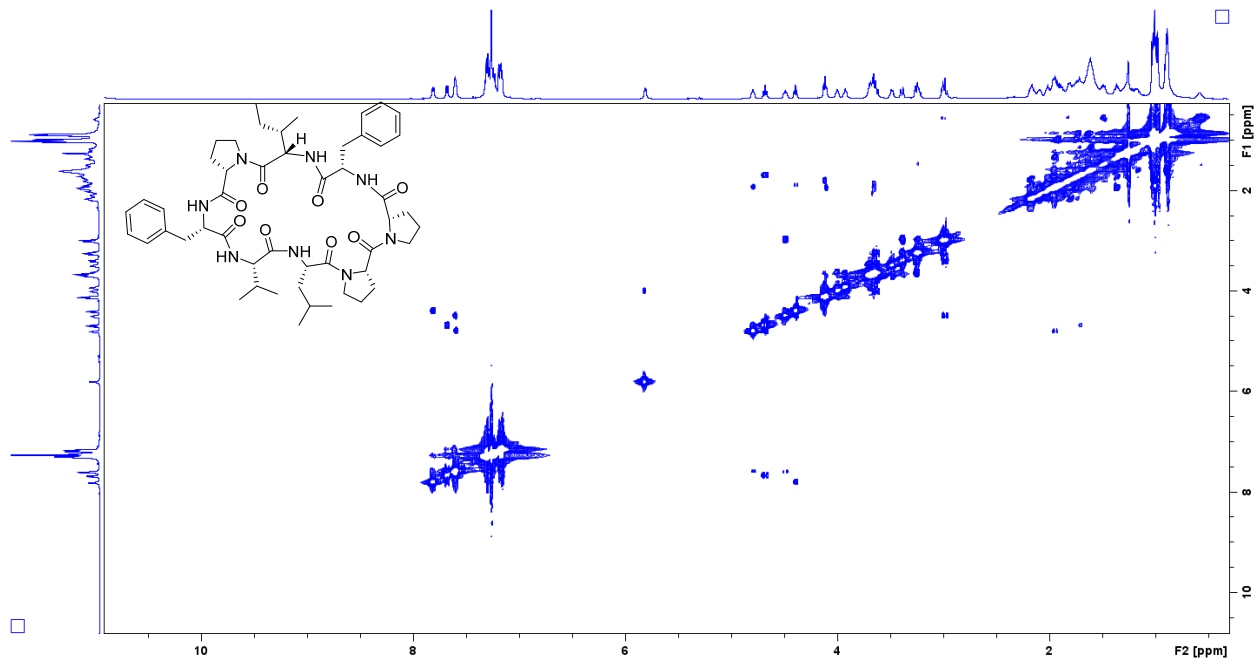
S1. ¹ H NMR spectrum of 1	2
S2. ¹³ C NMR spectrum of 1	2
S3. ¹ H- ¹ H COSY NMR spectrum of 1	3
S4. ¹ H- ¹ H TOCSY NMR spectrum of 1	3
S5. ¹ H- ¹³ C HSQC NMR spectrum of 1	4
S6. ¹ H- ¹³ C HMBC NMR spectrum of 1	4
S7. Nominal mass LC-MS/MS spectrum of 1	5
S8. LC-MS chromatograms of Marfey's analysis hydrolysis and derivatization products of 1 , along with derivatized authentic amino acid standards for leucine	5
S9. LC-MS chromatograms of Marfey's analysis hydrolysis and derivatization products of 1 , along with derivatized authentic amino acid standards for isoleucine.....	6
S10. LC-MS chromatograms of Marfey's analysis hydrolysis and derivatization products of 1 , along with derivatized authentic amino acid standards for valine	7
S11. LC-MS chromatograms of Marfey's analysis hydrolysis and derivatization products of 1 , along with derivatized authentic amino acid standards for phenylalanine	8
S12. LC-MS chromatograms of Marfey's analysis hydrolysis and derivatization products of 1 , along with derivatized authentic amino acid standards for proline.....	9
S13. Expanded view of the LC-MS/MS molecular network used to generate Figure 1 in the manuscript. 10	
S14. Molecular model coordinates for the energy minimized conformer of samoamide A (1 ; PDB format)	11

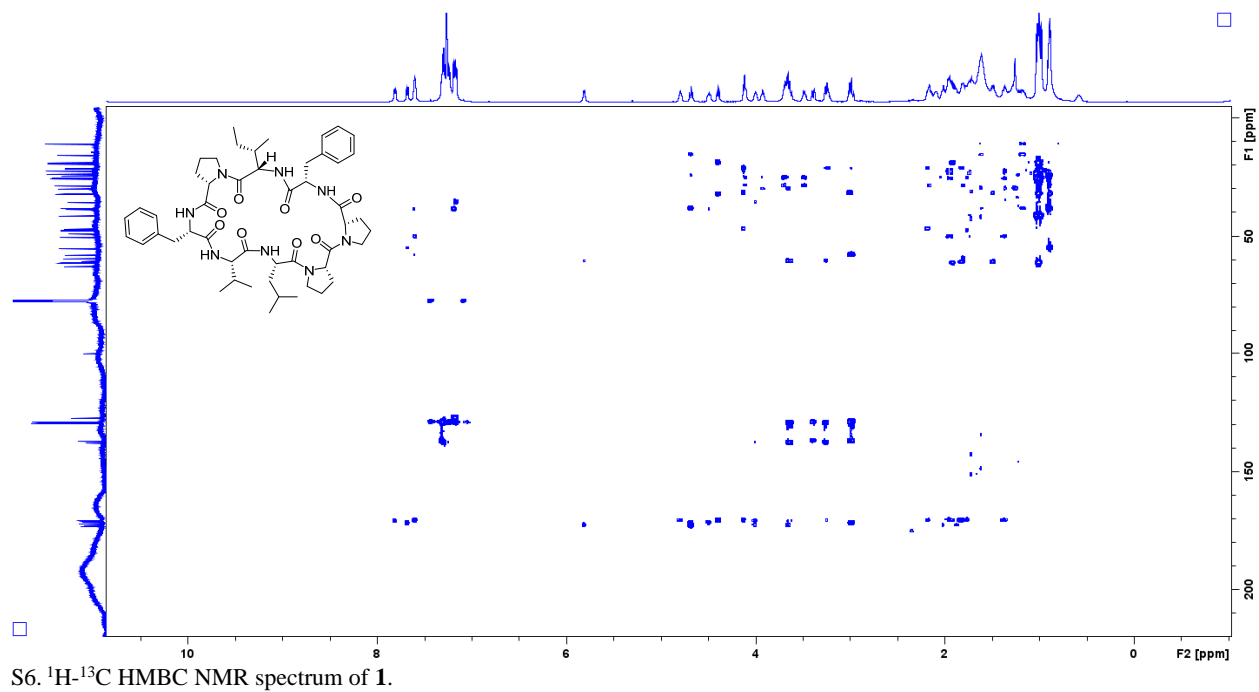
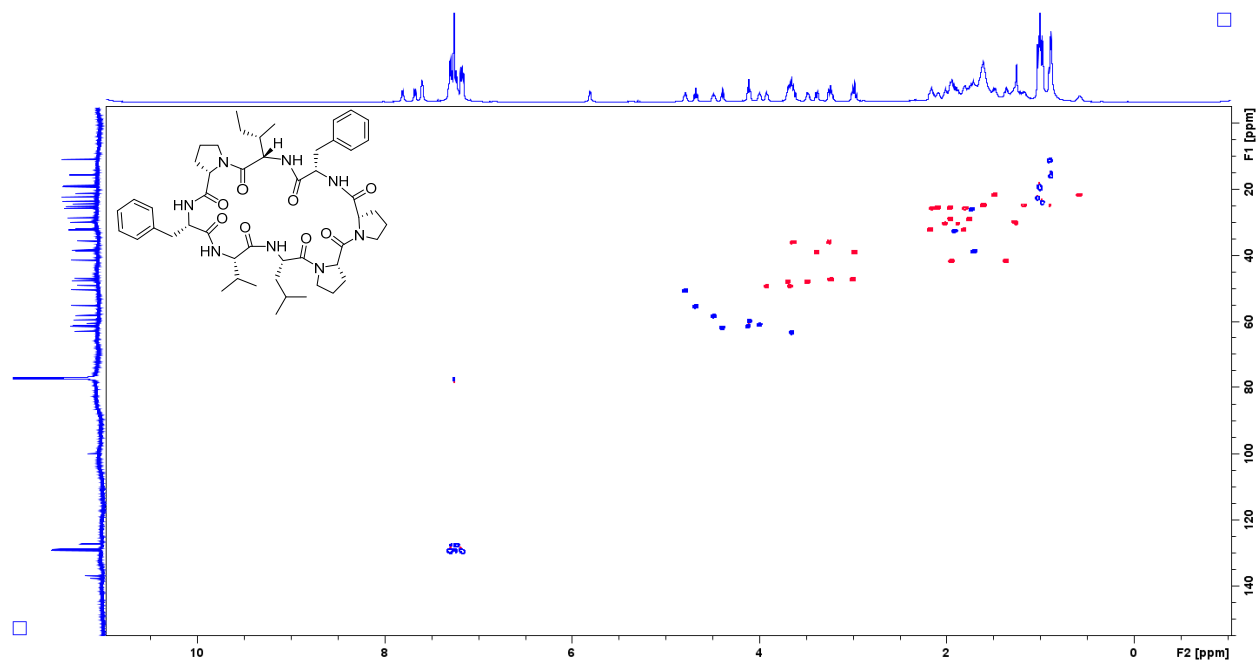


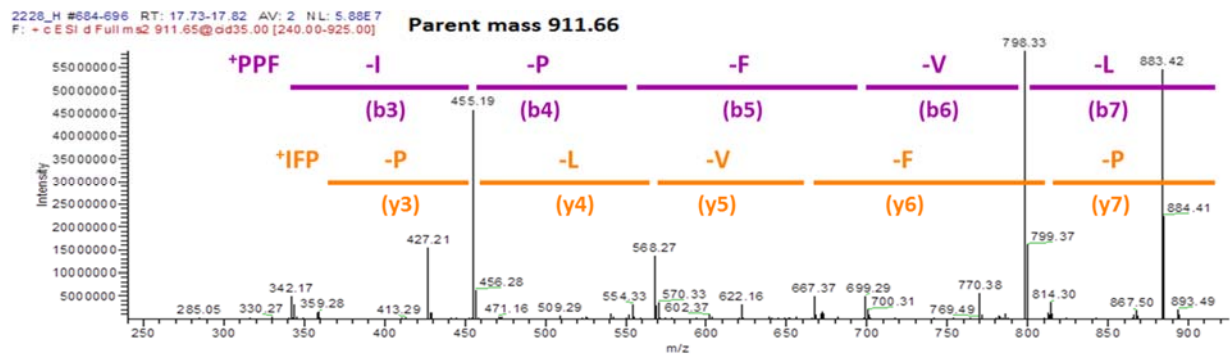
S1. ¹H NMR spectrum of **1**.



S2. ¹³C NMR spectrum of **1**.

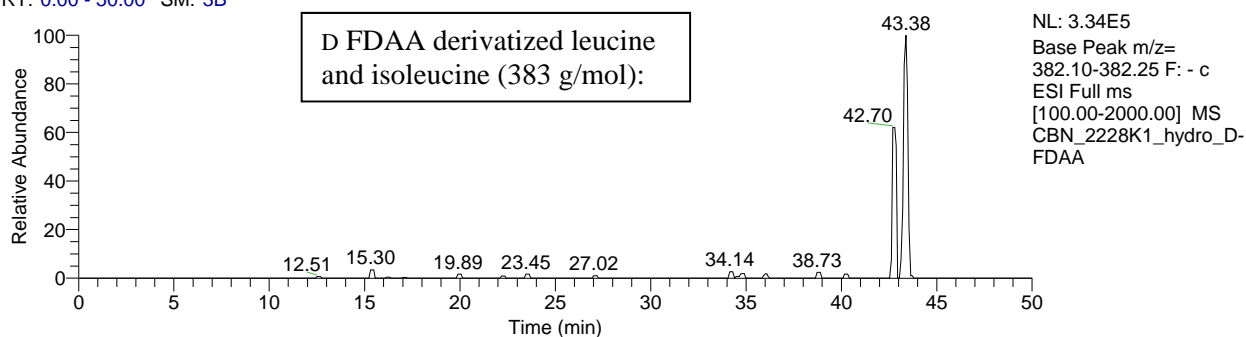




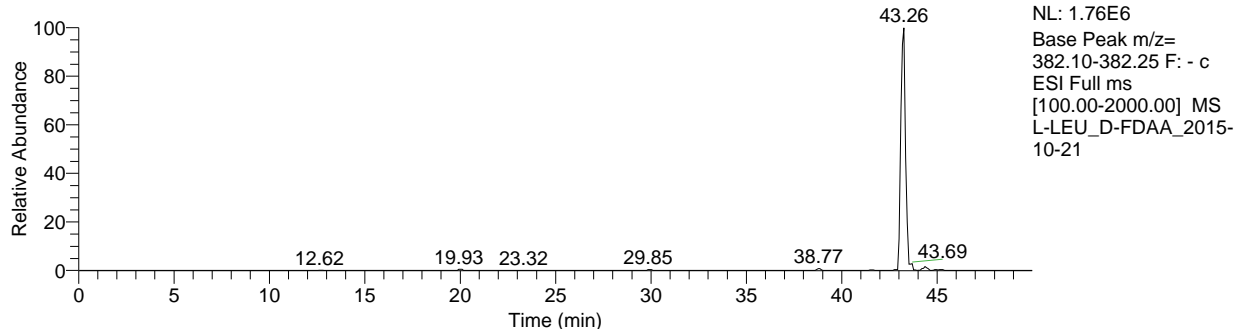


S7. Nominal mass LC-MS/MS spectrum of **1**.

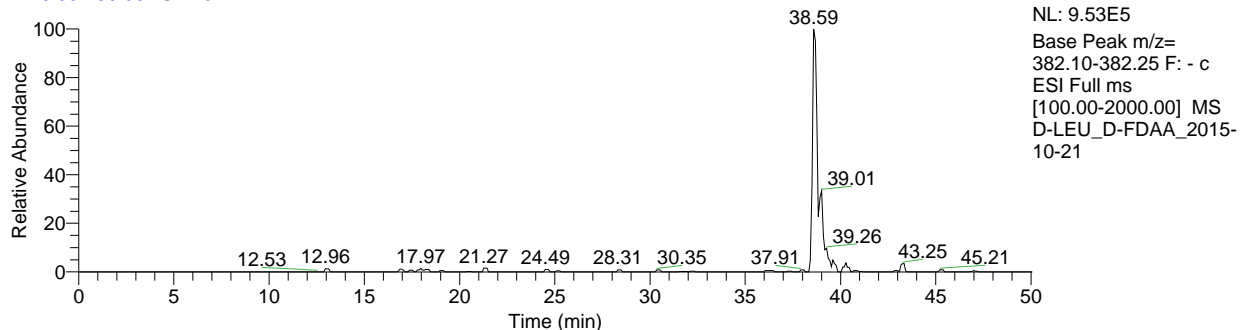
RT: 0.00 - 50.00 SM: 3B



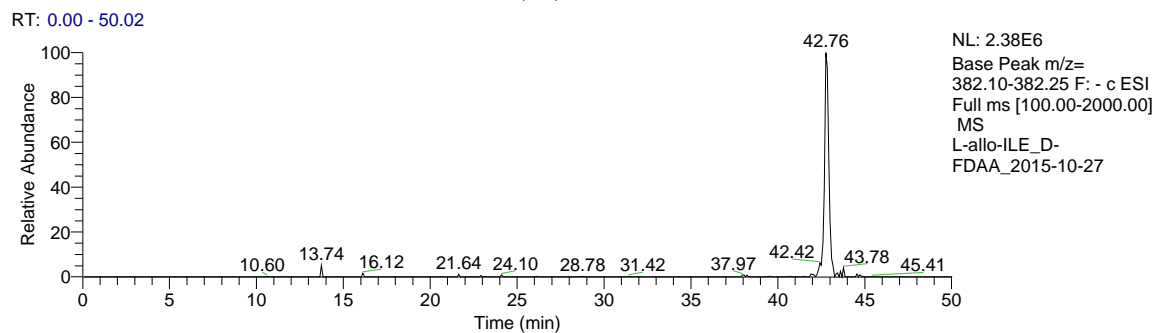
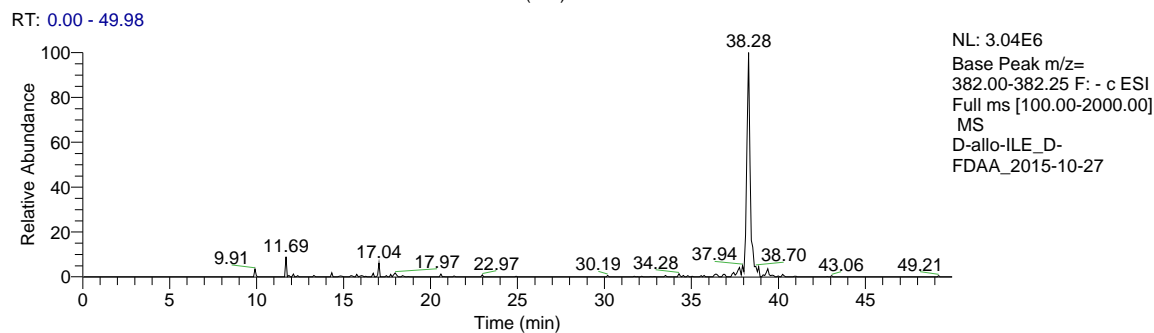
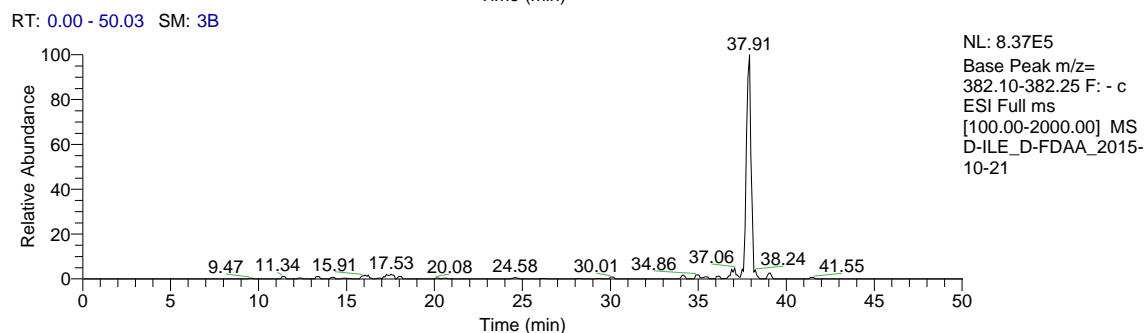
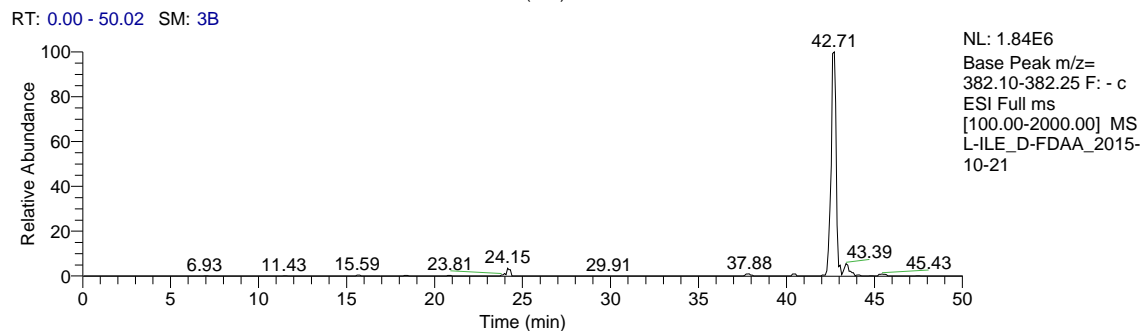
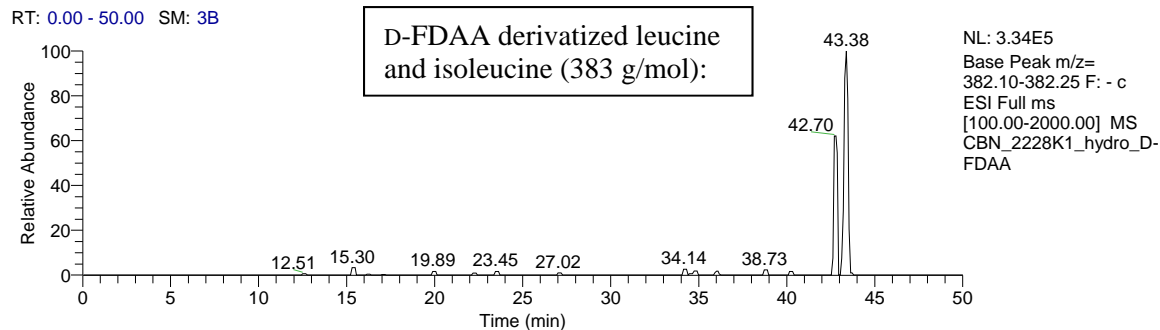
RT: 0.00 - 49.98 SM: 3B



RT: 0.00 - 50.06 SM: 3B

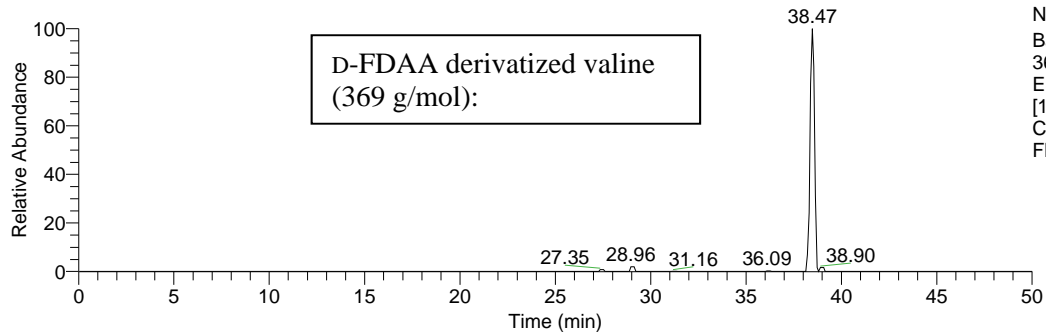


S8. LC-MS chromatograms of Marfey's analysis hydrolysis and derivatization products of **1**, along with derivatized authentic amino acid standards for leucine



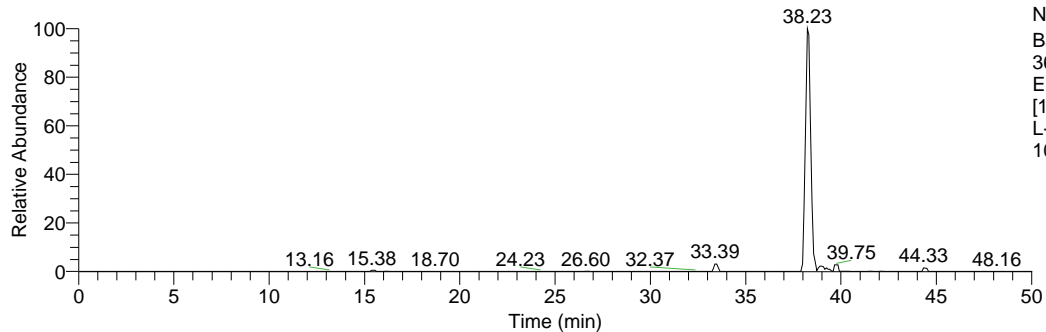
S9. LC-MS chromatograms of Marfey's analysis hydrolysis and derivatization products of 1, along with derivatized authentic amino acid standards for isoleucine

RT: 0.00 - 50.00 SM: 3B



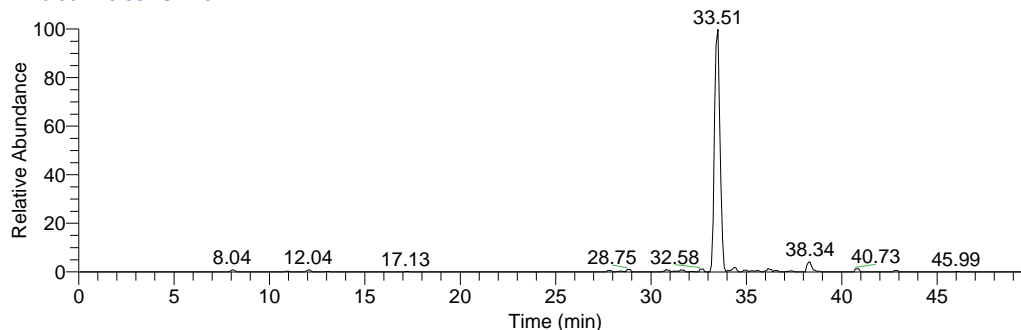
NL: 6.68E5
Base Peak m/z=
368.10-368.25 F: - c
ESI Full ms
[100.00-2000.00] MS
CBN_2228K1_hydro_D-
FDAA

RT: 0.00 - 50.03 SM: 3B



NL: 2.24E6
Base Peak m/z=
368.10-368.25 F: - c
ESI Full ms
[100.00-2000.00] MS
L-VAL_D-FDAA_2015-
10-21

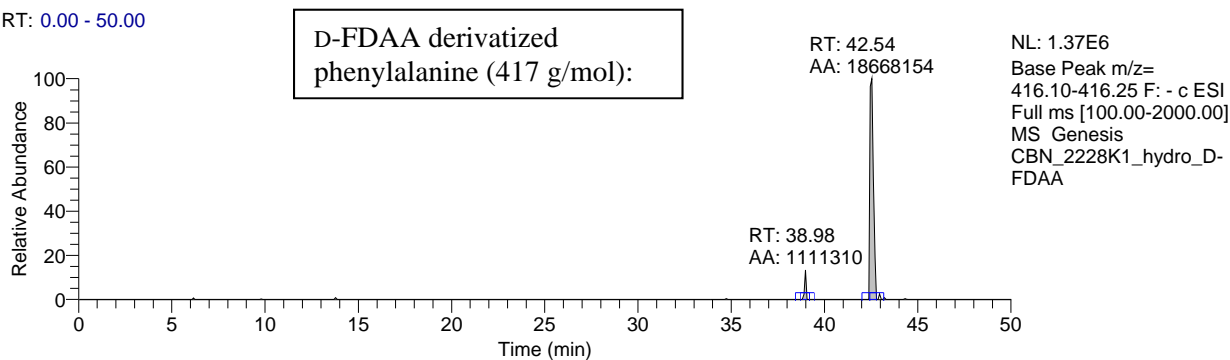
RT: 0.00 - 49.98 SM: 3B



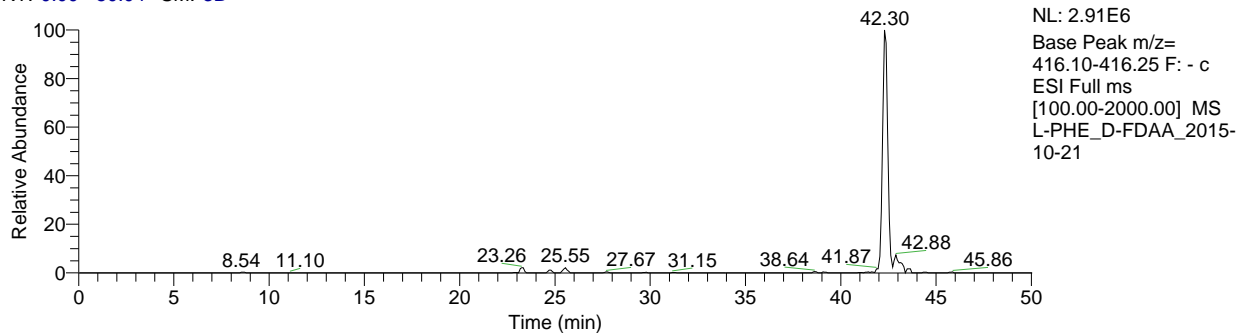
NL: 1.46E6
Base Peak m/z=
368.10-368.25 F: - c
ESI Full ms
[100.00-2000.00] MS
D-VAL-D-FDAA_2015-
10-21

S10. LC-MS chromatograms of Marfey's analysis hydrolysis and derivatization products of 1, along with derivatized authentic amino acid standards for valine

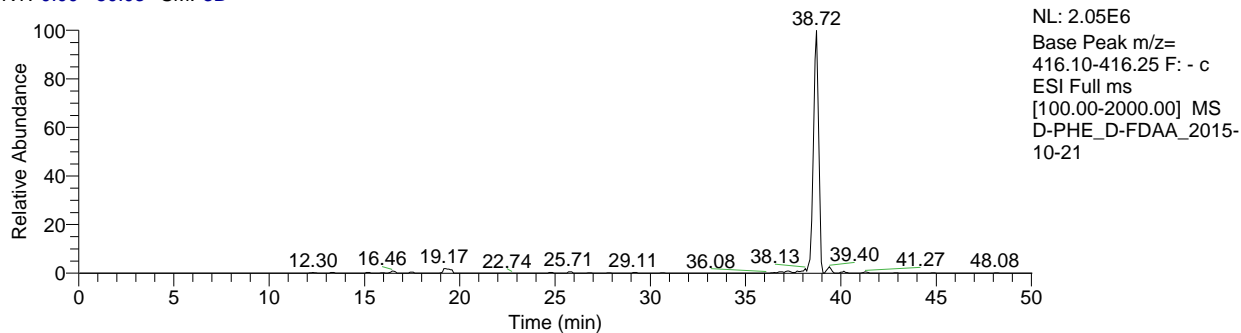
RT: 0.00 - 50.00



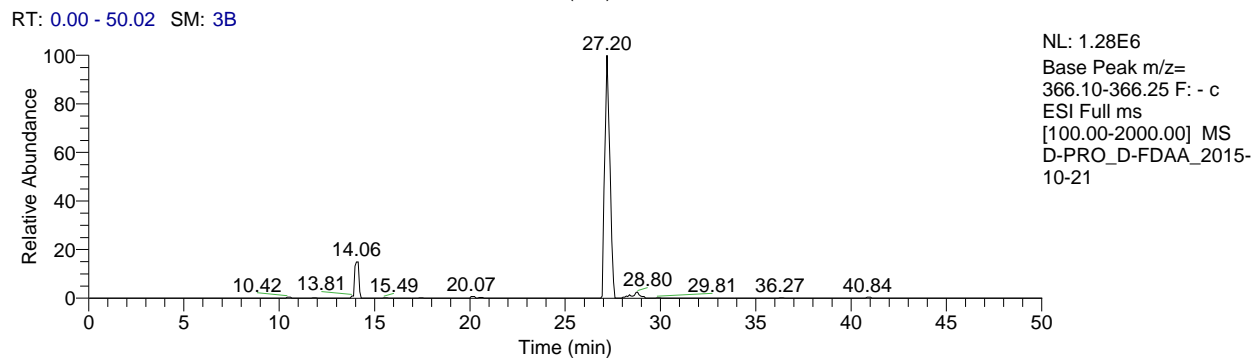
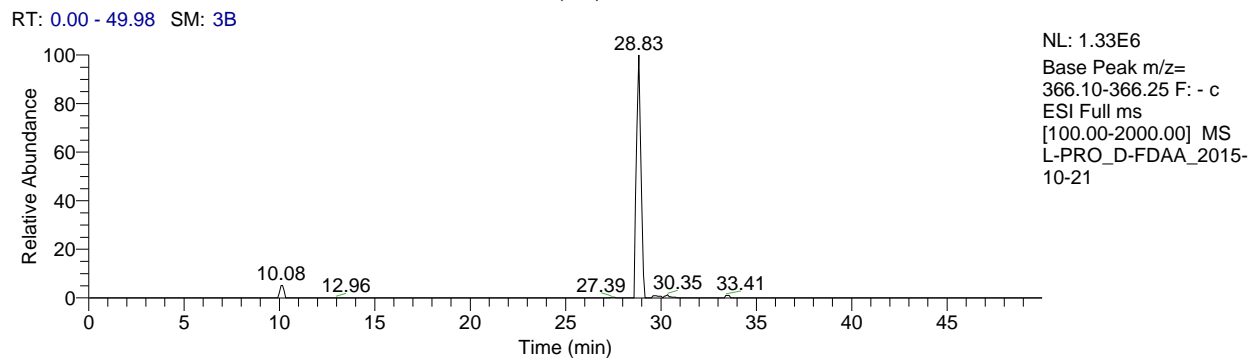
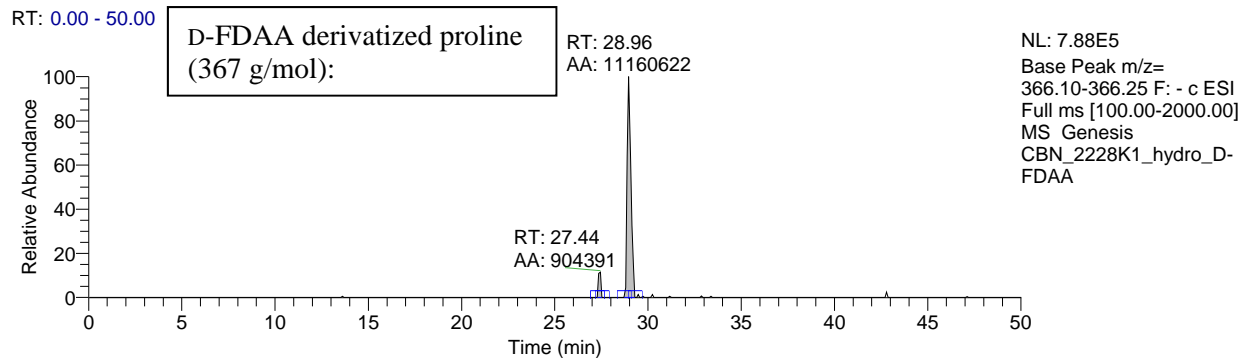
RT: 0.00 - 50.04 SM: 3B



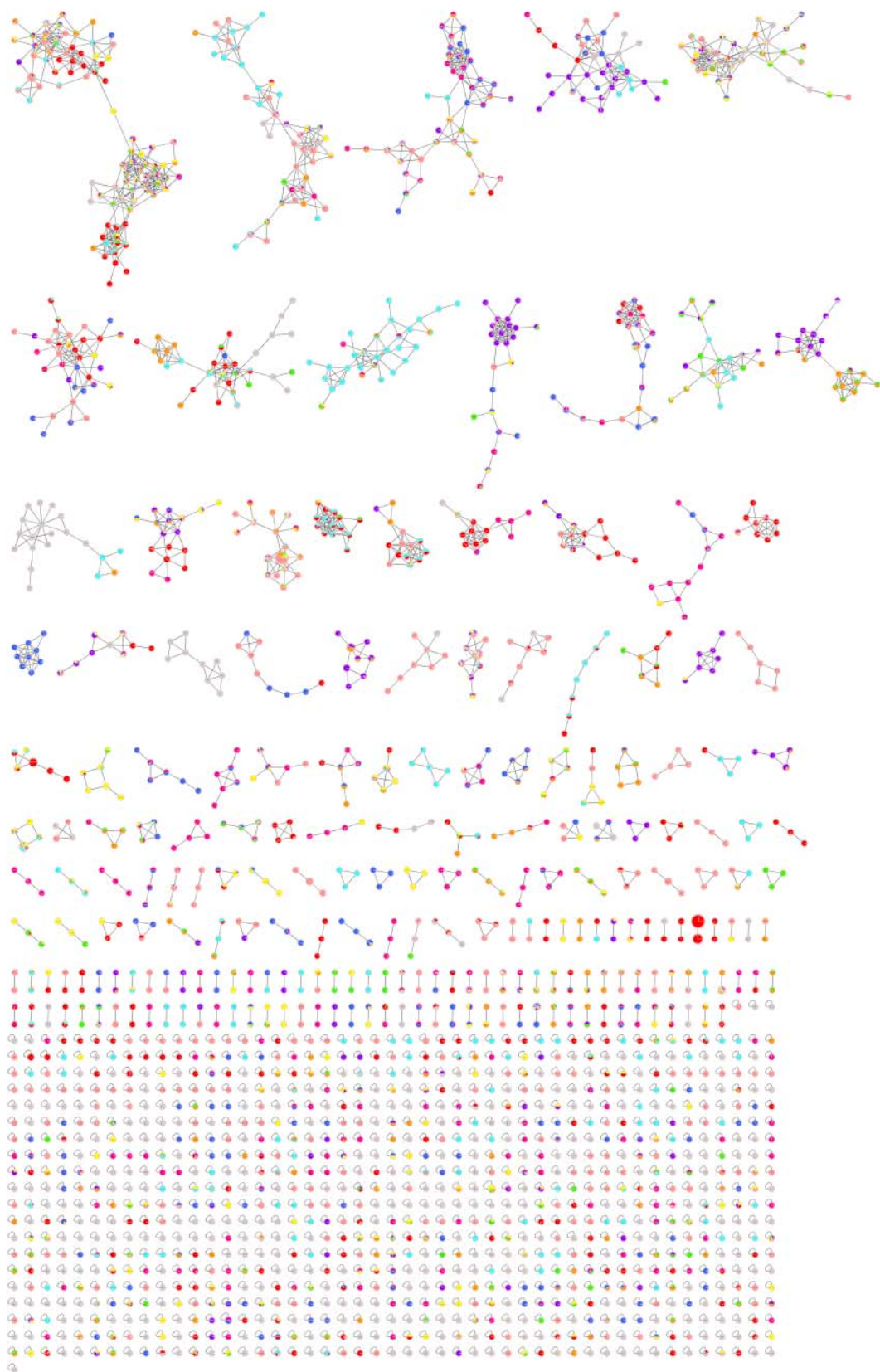
RT: 0.00 - 50.03 SM: 3B



S11. LC-MS chromatograms of Marfey's analysis hydrolysis and derivatization products of 1, along with derivatized authentic amino acid standards for phenylalanine



S12. LC-MS chromatograms of Marfey's analysis hydrolysis and derivatization products of 1, along with derivatized authentic amino acid standards for proline



S13.Expanded view of the LC-MS/MS molecular network used to generate Figure 1 in the manuscript.

S14.Molecular model coordinates for the energy minimized conformer of samoamide A (1; PDB format)

HEADER

REMARK Spartan '10 exported M0001

HETATM	1	C	UNK	0001	5.075	8.586	-7.110
HETATM	2	N	UNK	0001	5.064	8.064	-5.741
HETATM	3	C	UNK	0001	4.185	7.789	-8.088
HETATM	4	N	UNK	0001	3.125	7.143	-7.488
HETATM	5	O	UNK	0001	4.321	7.837	-9.309
HETATM	6	C	UNK	0001	5.734	6.932	-5.332
HETATM	7	O	UNK	0001	6.294	6.165	-6.109
HETATM	8	N	UNK	0001	4.531	6.074	-3.232
HETATM	9	C	UNK	0001	3.288	6.675	-3.294
HETATM	10	O	UNK	0001	3.127	7.687	-3.986
HETATM	11	C	UNK	0001	2.121	6.052	-2.473
HETATM	12	N	UNK	0001	0.889	6.785	-2.775
HETATM	13	C	UNK	0001	0.672	8.033	-2.229
HETATM	14	C	UNK	0001	-0.335	8.934	-2.980
HETATM	15	O	UNK	0001	1.274	8.421	-1.226
HETATM	16	N	UNK	0001	-0.289	7.445	-8.925
HETATM	17	C	UNK	0001	0.866	7.665	-8.195
HETATM	18	C	UNK	0001	2.006	6.603	-8.264
HETATM	19	O	UNK	0001	0.982	8.676	-7.490
HETATM	20	C	UNK	0001	-2.180	8.472	-7.566
HETATM	21	O	UNK	0001	-1.782	8.004	-6.501
HETATM	22	N	UNK	0001	-3.365	9.190	-7.651
HETATM	23	C	UNK	0001	-3.969	9.764	-6.443
HETATM	24	C	UNK	0001	-4.391	8.712	-5.387
HETATM	25	O	UNK	0001	-5.017	7.694	-5.689
HETATM	26	N	UNK	0001	-4.148	8.969	-4.061
HETATM	27	C	UNK	0001	-3.213	9.945	-3.495
HETATM	28	C	UNK	0001	-2.613	9.388	-2.183
HETATM	29	N	UNK	0001	-1.256	9.526	-2.004
HETATM	30	O	UNK	0001	-3.299	8.875	-1.300
HETATM	31	C	UNK	0001	5.719	6.740	-3.795
HETATM	32	C	UNK	0001	-0.209	5.896	-3.104
HETATM	33	C	UNK	0001	0.289	4.516	-2.712
HETATM	34	C	UNK	0001	1.801	4.611	-2.871
HETATM	35	C	UNK	0001	4.921	5.027	-2.297
HETATM	36	C	UNK	0001	6.394	5.281	-2.023
HETATM	37	C	UNK	0001	6.886	5.851	-3.342
HETATM	38	C	UNK	0001	-1.370	8.439	-8.896
HETATM	39	C	UNK	0001	-0.398	6.598	-10.099
HETATM	40	C	UNK	0001	-1.866	6.671	-10.464
HETATM	41	C	UNK	0001	-2.217	8.116	-10.140
HETATM	42	C	UNK	0001	6.480	8.801	-7.705
HETATM	43	C	UNK	0001	7.380	9.655	-6.838
HETATM	44	C	UNK	0001	8.453	9.076	-6.146
HETATM	45	C	UNK	0001	9.275	9.857	-5.332
HETATM	46	C	UNK	0001	9.034	11.223	-5.204
HETATM	47	C	UNK	0001	7.973	11.810	-5.891
HETATM	48	C	UNK	0001	7.150	11.031	-6.706
HETATM	49	C	UNK	0001	1.622	5.198	-7.734
HETATM	50	C	UNK	0001	0.911	5.273	-6.386
HETATM	51	C	UNK	0001	2.822	4.229	-7.628

HETATM	52	C	UNK	0001	3.526	3.985	-8.955
HETATM	53	C	UNK	0001	-5.249	10.554	-6.798
HETATM	54	C	UNK	0001	-5.001	11.708	-7.746
HETATM	55	C	UNK	0001	-4.260	12.826	-7.338
HETATM	56	C	UNK	0001	-4.015	13.874	-8.227
HETATM	57	C	UNK	0001	-4.509	13.817	-9.529
HETATM	58	C	UNK	0001	-5.254	12.714	-9.942
HETATM	59	C	UNK	0001	-5.501	11.665	-9.055
HETATM	60	C	UNK	0001	-3.879	11.327	-3.279
HETATM	61	C	UNK	0001	-5.019	11.309	-2.256
HETATM	62	C	UNK	0001	-2.856	12.402	-2.906
HETATM	63	C	UNK	0001	0.399	9.954	-3.872
HETATM	64	C	UNK	0001	1.516	10.812	-3.239
HETATM	65	C	UNK	0001	2.204	11.636	-4.335
HETATM	66	C	UNK	0001	1.013	11.748	-2.141
HETATM	67	H	UNK	0001	4.586	9.566	-7.026
HETATM	68	H	UNK	0001	4.358	8.423	-5.096
HETATM	69	H	UNK	0001	2.921	7.427	-6.534
HETATM	70	H	UNK	0001	2.333	6.143	-1.403
HETATM	71	H	UNK	0001	-0.937	8.305	-3.645
HETATM	72	H	UNK	0001	2.307	6.528	-9.315
HETATM	73	H	UNK	0001	-3.451	9.775	-8.472
HETATM	74	H	UNK	0001	-3.215	10.443	-6.040
HETATM	75	H	UNK	0001	-4.476	8.239	-3.434
HETATM	76	H	UNK	0001	-2.405	10.059	-4.217
HETATM	77	H	UNK	0001	-1.001	9.270	-1.053
HETATM	78	H	UNK	0001	5.802	7.724	-3.315
HETATM	79	H	UNK	0001	-1.120	6.170	-2.562
HETATM	80	H	UNK	0001	-0.403	5.973	-4.174
HETATM	81	H	UNK	0001	0.045	4.319	-1.661
HETATM	82	H	UNK	0001	-0.155	3.720	-3.316
HETATM	83	H	UNK	0001	2.312	3.880	-2.236
HETATM	84	H	UNK	0001	2.094	4.403	-3.905
HETATM	85	H	UNK	0001	4.331	5.049	-1.379
HETATM	86	H	UNK	0001	4.776	4.066	-2.801
HETATM	87	H	UNK	0001	6.506	6.030	-1.230
HETATM	88	H	UNK	0001	6.928	4.377	-1.720
HETATM	89	H	UNK	0001	7.817	6.416	-3.236
HETATM	90	H	UNK	0001	7.070	5.030	-4.045
HETATM	91	H	UNK	0001	-0.930	9.440	-9.006
HETATM	92	H	UNK	0001	0.233	7.031	-10.885
HETATM	93	H	UNK	0001	-0.075	5.576	-9.921
HETATM	94	H	UNK	0001	-2.055	6.411	-11.509
HETATM	95	H	UNK	0001	-2.450	5.996	-9.827
HETATM	96	H	UNK	0001	-1.900	8.758	-10.971
HETATM	97	H	UNK	0001	-3.296	8.242	-10.018
HETATM	98	H	UNK	0001	6.963	7.837	-7.906
HETATM	99	H	UNK	0001	6.401	9.286	-8.687
HETATM	100	H	UNK	0001	8.651	8.009	-6.238
HETATM	101	H	UNK	0001	10.105	9.398	-4.801
HETATM	102	H	UNK	0001	9.676	11.832	-4.573
HETATM	103	H	UNK	0001	7.788	12.877	-5.795
HETATM	104	H	UNK	0001	6.329	11.506	-7.239
HETATM	105	H	UNK	0001	0.912	4.731	-8.421
HETATM	106	H	UNK	0001	-0.047	5.793	-6.476
HETATM	107	H	UNK	0001	0.696	4.271	-5.999

HETATM	108	H	UNK	0001	1.521	5.803	-5.651
HETATM	109	H	UNK	0001	3.549	4.591	-6.891
HETATM	110	H	UNK	0001	2.464	3.262	-7.254
HETATM	111	H	UNK	0001	4.292	3.212	-8.836
HETATM	112	H	UNK	0001	2.819	3.646	-9.718
HETATM	113	H	UNK	0001	4.025	4.887	-9.321
HETATM	114	H	UNK	0001	-5.987	9.872	-7.243
HETATM	115	H	UNK	0001	-5.728	10.948	-5.893
HETATM	116	H	UNK	0001	-3.870	12.897	-6.326
HETATM	117	H	UNK	0001	-3.440	14.738	-7.904
HETATM	118	H	UNK	0001	-4.321	14.636	-10.218
HETATM	119	H	UNK	0001	-5.649	12.675	-10.954
HETATM	120	H	UNK	0001	-6.090	10.816	-9.394
HETATM	121	H	UNK	0001	-4.323	11.639	-4.230
HETATM	122	H	UNK	0001	-5.534	12.277	-2.245
HETATM	123	H	UNK	0001	-5.763	10.545	-2.502
HETATM	124	H	UNK	0001	-4.655	11.124	-1.241
HETATM	125	H	UNK	0001	-3.331	13.387	-2.865
HETATM	126	H	UNK	0001	-2.403	12.211	-1.928
HETATM	127	H	UNK	0001	-2.057	12.452	-3.654
HETATM	128	H	UNK	0001	0.853	9.385	-4.696
HETATM	129	H	UNK	0001	-0.331	10.626	-4.340
HETATM	130	H	UNK	0001	2.282	10.157	-2.810
HETATM	131	H	UNK	0001	3.030	12.223	-3.921
HETATM	132	H	UNK	0001	2.619	10.982	-5.110
HETATM	133	H	UNK	0001	1.502	12.327	-4.813
HETATM	134	H	UNK	0001	0.209	12.393	-2.507
HETATM	135	H	UNK	0001	0.645	11.192	-1.276
HETATM	136	H	UNK	0001	1.822	12.394	-1.783
CONNECT	1	67	2	3	42		
CONNECT	2	1	6	68			
CONNECT	3	1	4	5			
CONNECT	4	3	18	69			
CONNECT	5	3					
CONNECT	6	2	7	31			
CONNECT	7	6					
CONNECT	8	9	31	35			
CONNECT	9	8	10	11			
CONNECT	10	9					
CONNECT	11	9	12	34	70		
CONNECT	12	11	13	32			
CONNECT	13	12	14	15			
CONNECT	14	13	29	63	71		
CONNECT	15	13					
CONNECT	16	17	38	39			
CONNECT	17	16	18	19			
CONNECT	18	17	4	49	72		
CONNECT	19	17					
CONNECT	20	21	22	38			
CONNECT	21	20					
CONNECT	22	20	23	73			
CONNECT	23	22	24	53	74		
CONNECT	24	23	25	26			
CONNECT	25	24					
CONNECT	26	24	27	75			
CONNECT	27	26	28	60	76		

CONNECT 28 27 29 30
CONNECT 29 28 14 77
CONNECT 30 28
CONNECT 31 6 8 37 78
CONNECT 32 12 33 79 80
CONNECT 33 32 34 81 82
CONNECT 34 33 11 83 84
CONNECT 35 8 36 85 86
CONNECT 36 35 37 87 88
CONNECT 37 36 31 89 90
CONNECT 38 20 16 41 91
CONNECT 39 16 40 92 93
CONNECT 40 39 41 94 95
CONNECT 41 40 38 96 97
CONNECT 42 1 43 98 99
CONNECT 43 42 44 48
CONNECT 44 43 45 100
CONNECT 45 44 46 101
CONNECT 46 45 47 102
CONNECT 47 46 48 103
CONNECT 48 47 43 104
CONNECT 49 18 50 51 105
CONNECT 50 49 106 107 108
CONNECT 51 49 52 109 110
CONNECT 52 51 111 112 113
CONNECT 53 23 54 114 115
CONNECT 54 53 55 59
CONNECT 55 54 56 116
CONNECT 56 55 57 117
CONNECT 57 56 58 118
CONNECT 58 57 59 119
CONNECT 59 58 54 120
CONNECT 60 27 61 62 121
CONNECT 61 60 122 123 124
CONNECT 62 60 125 126 127
CONNECT 63 14 64 128 129
CONNECT 64 63 65 66 130
CONNECT 65 64 131 132 133
CONNECT 66 64 134 135 136
CONNECT 67 1
CONNECT 68 2
CONNECT 69 4
CONNECT 70 11
CONNECT 71 14
CONNECT 72 18
CONNECT 73 22
CONNECT 74 23
CONNECT 75 26
CONNECT 76 27
CONNECT 77 29
CONNECT 78 31
CONNECT 79 32
CONNECT 80 32
CONNECT 81 33
CONNECT 82 33
CONNECT 83 34

CONNECT 84 34
CONNECT 85 35
CONNECT 86 35
CONNECT 87 36
CONNECT 88 36
CONNECT 89 37
CONNECT 90 37
CONNECT 91 38
CONNECT 92 39
CONNECT 93 39
CONNECT 94 40
CONNECT 95 40
CONNECT 96 41
CONNECT 97 41
CONNECT 98 42
CONNECT 99 42
CONNECT 100 44
CONNECT 101 45
CONNECT 102 46
CONNECT 103 47
CONNECT 104 48
CONNECT 105 49
CONNECT 106 50
CONNECT 107 50
CONNECT 108 50
CONNECT 109 51
CONNECT 110 51
CONNECT 111 52
CONNECT 112 52
CONNECT 113 52
CONNECT 114 53
CONNECT 115 53
CONNECT 116 55
CONNECT 117 56
CONNECT 118 57
CONNECT 119 58
CONNECT 120 59
CONNECT 121 60
CONNECT 122 61
CONNECT 123 61
CONNECT 124 61
CONNECT 125 62
CONNECT 126 62
CONNECT 127 62
CONNECT 128 63
CONNECT 129 63
CONNECT 130 64
CONNECT 131 65
CONNECT 132 65
CONNECT 133 65
CONNECT 134 66
CONNECT 135 66
CONNECT 136 66
END