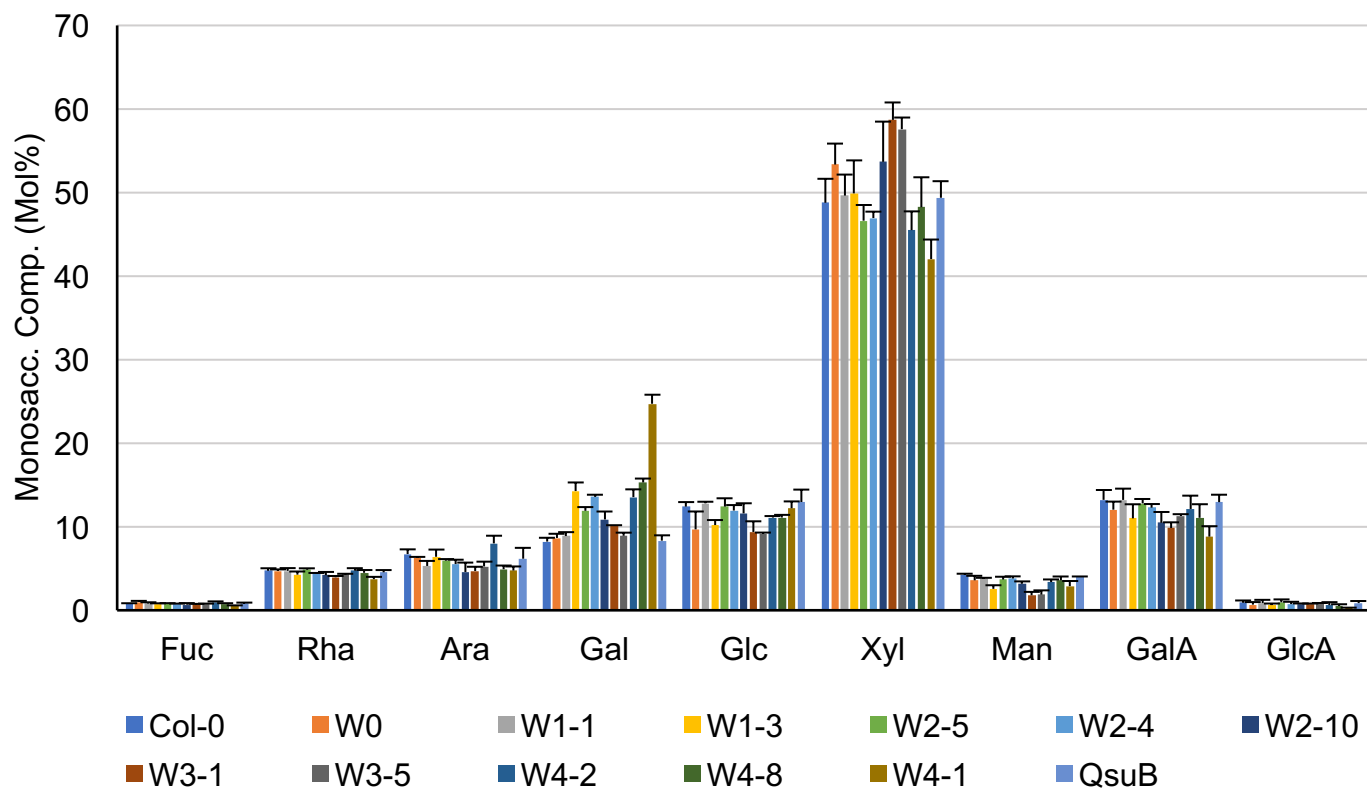
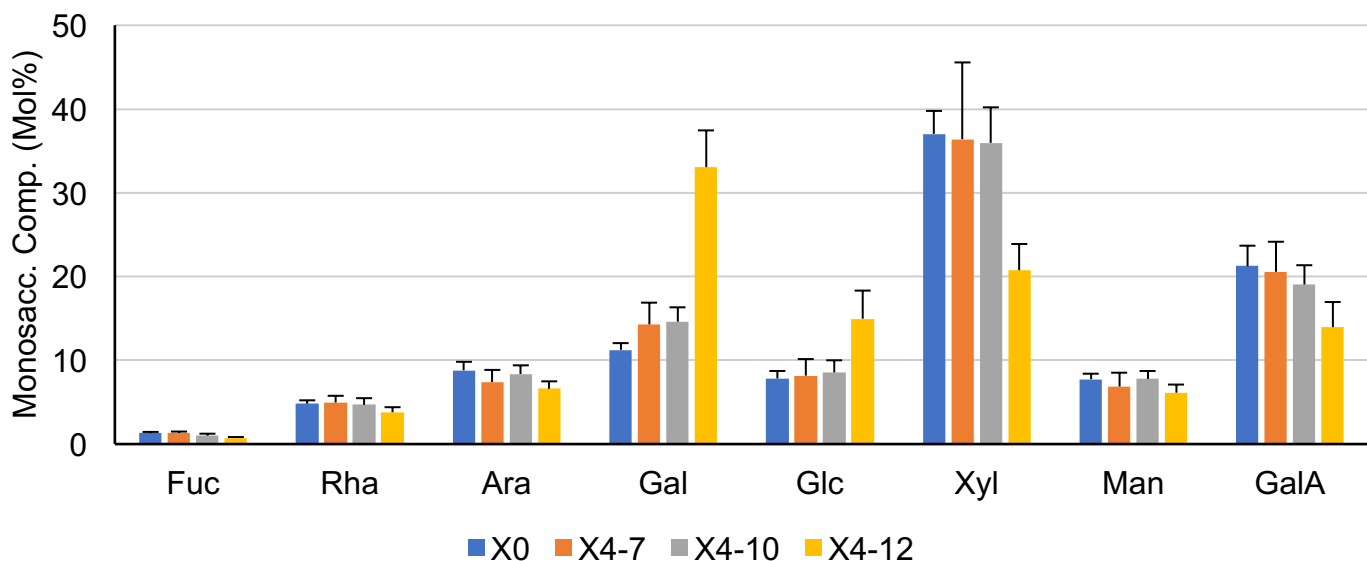


A.**B.**

Additional file 2: Monosaccharides content in stem cell walls of engineered lines. Alcohol insoluble residue (AIR) of stem cell wall of W- (A) and X- (B) engineered lines, hydrolyzed with trifluoroacetic acid, and analyzed by HPAEC-PAD liquid chromatography. Bars: SD. n=3