

Fig S1

Step 1 PCR with specific gene

read 1 seq primer barcode gene specific sequence

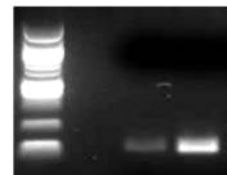
5h2c editing sites: ATACGTAATCCTA

Amplification *35

gene specific sequence

read 1 seq primer barcode

5h2c editing sites: : ATACGTAATCCTA



Gel separation+ purification+ pool samples

Step 2 PCR

adaptors read 1 seq primer

read 1 seq primer barcode

5h2c editing sites: : ATACGTAATCCTA

gene specific sequence 2 adaptor

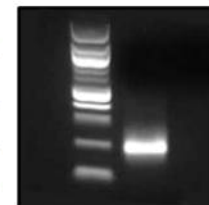
Amplification *8

adaptors read 1 seq primer

barcode

5h2c editing sites: : ATACGTAATCCTA

adaptor



Gel separation+ purification



→ Illumina Seq