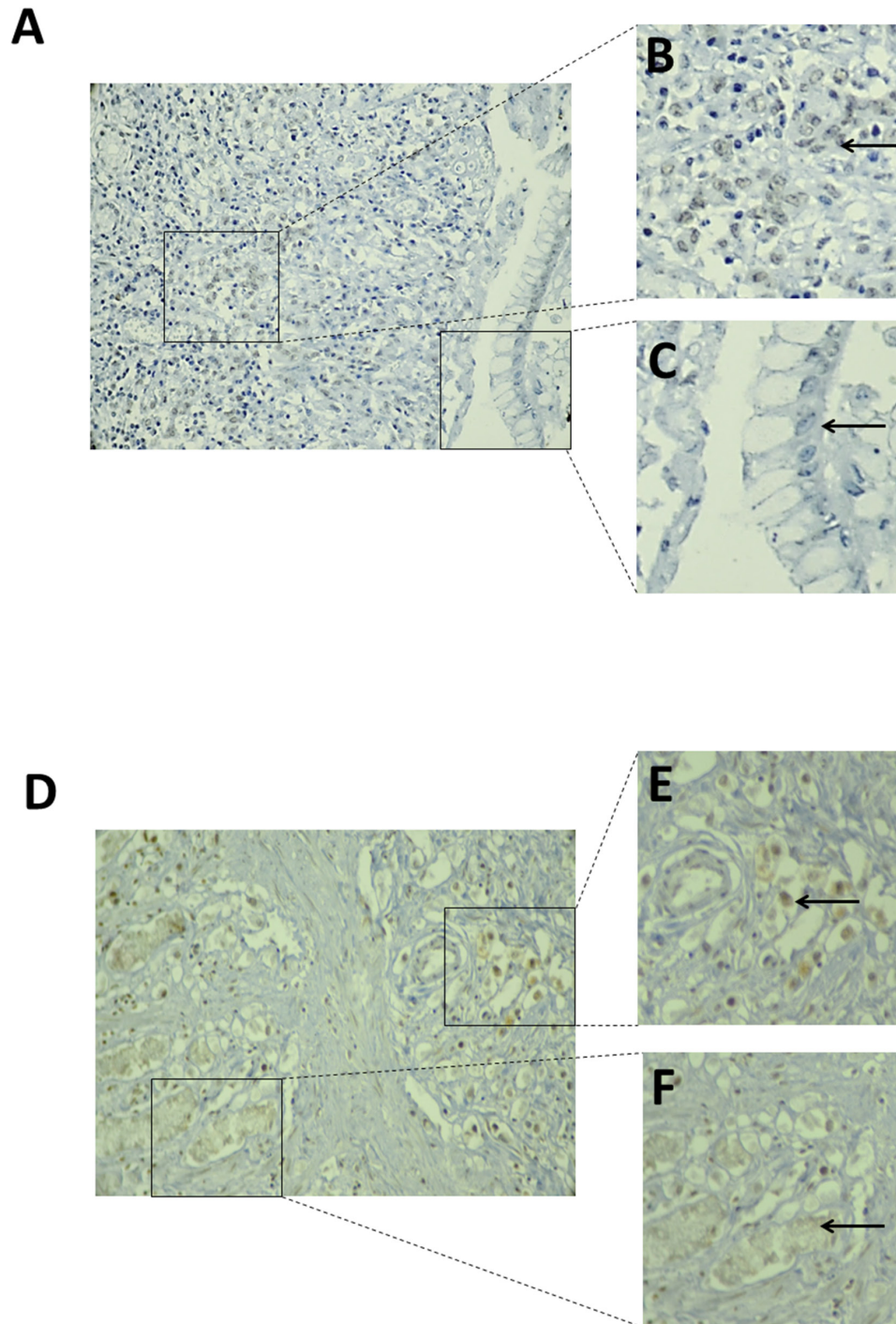
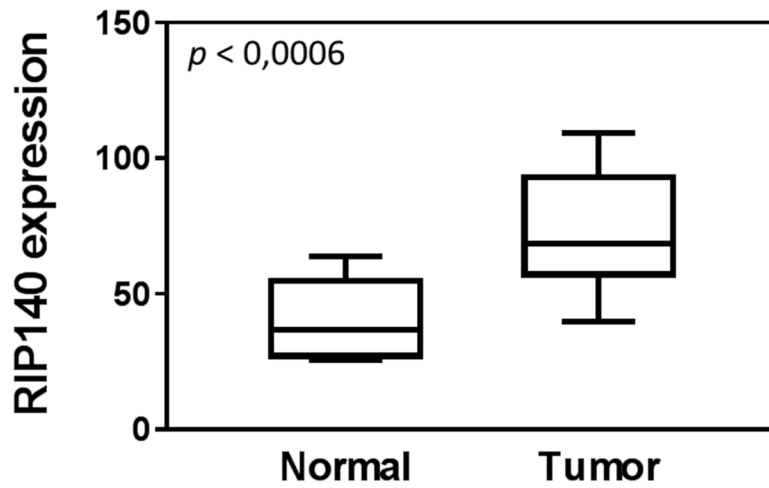


RIP140 and LCoR expression in gastrointestinal cancers

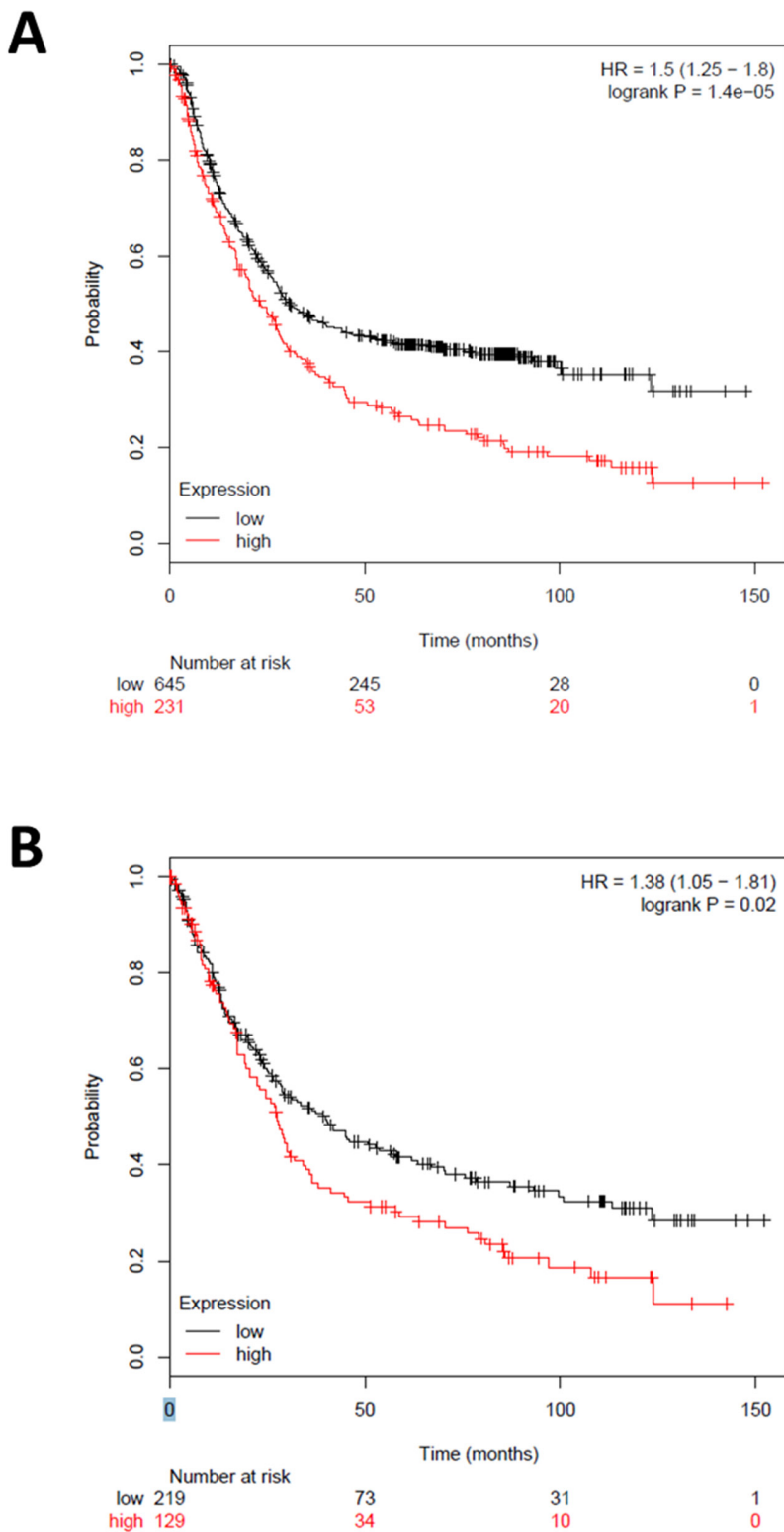
SUPPLEMENTARY MATERIALS



Supplementary Figure 1: Increased expression of RIP140 and LCoR in gastric cancer. Immunostaining of RIP140 (A) and LCoR (D) expression in tumoral gastric cancer (B and E) in comparison to normal mucosa (C and F).



Supplementary Figure 2: Higher levels of RIP140 mRNA in GC. Reanalysis of the GDS1210 transcriptomic data showing the up-regulation of RIP140 expression in gastric cancer compared to normal mucosa. Correlations were performed using the nonparametric Mann–Whitney *U* test. Boxplots show the median and interquartile range (box) and the 10-90 percentiles (whiskers).



Supplementary Figure 3: Correlation of RIP140 and LCoR mRNA expression with OS of patients with GC. The Kaplan Meier plotter [41] was used to analyze the correlation of RIP140 and LCoR gene expression (using median cut-off) with overall survival of patients with GC. **(A)** Kaplan Meier curve for the RIP140/NRIP1 probeset 202600_s_at in 876 patients. **(B)** Kaplan Meier curve for the LCoR probeset 226520_at in 348 patients. The hazard ratio with 95% confidence intervals and log-rank p-value were calculated.