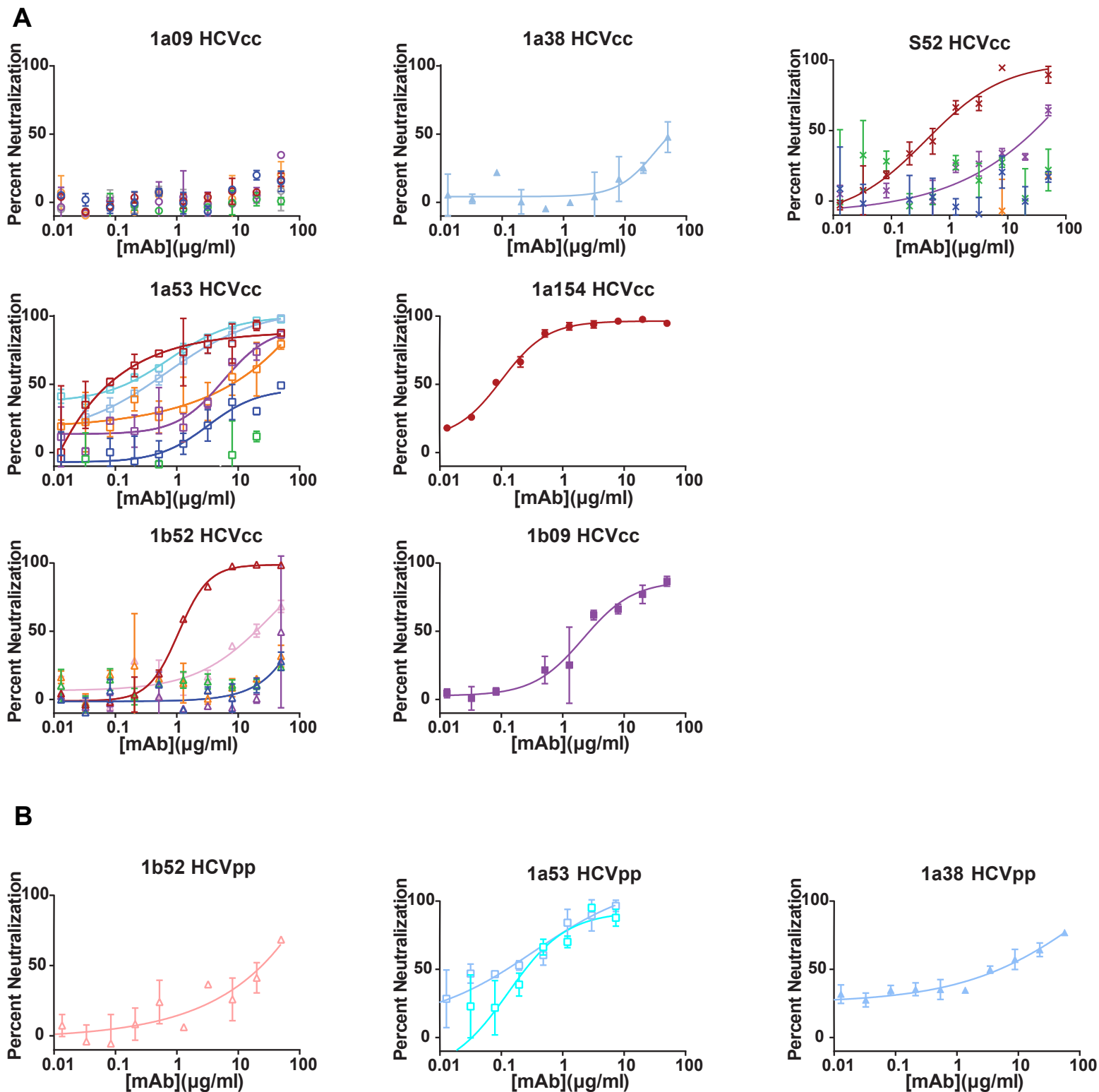
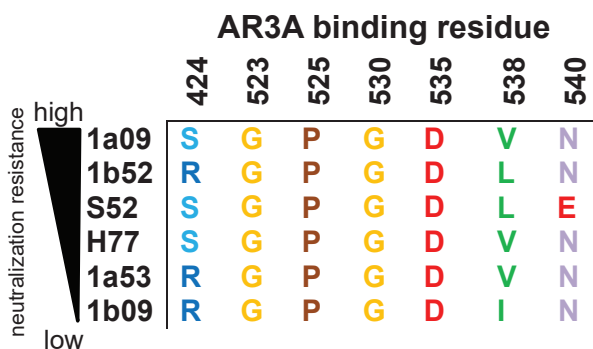
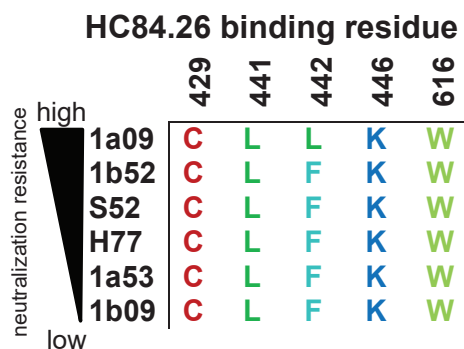
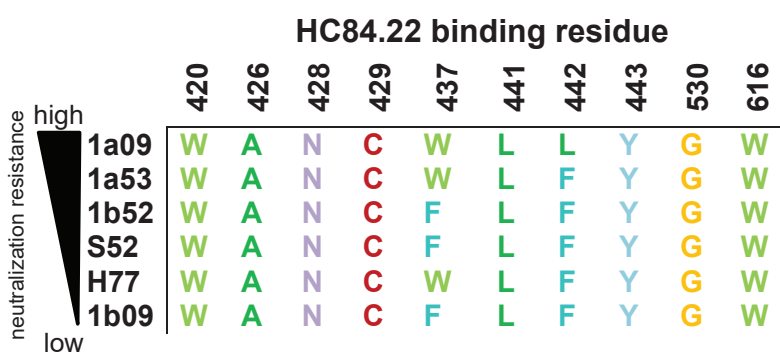
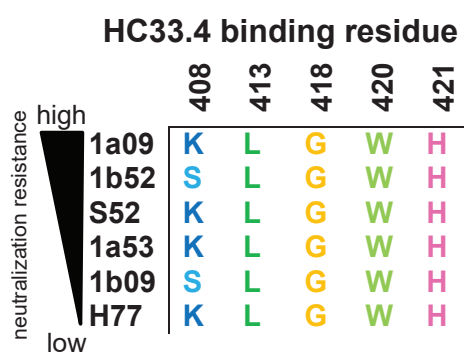
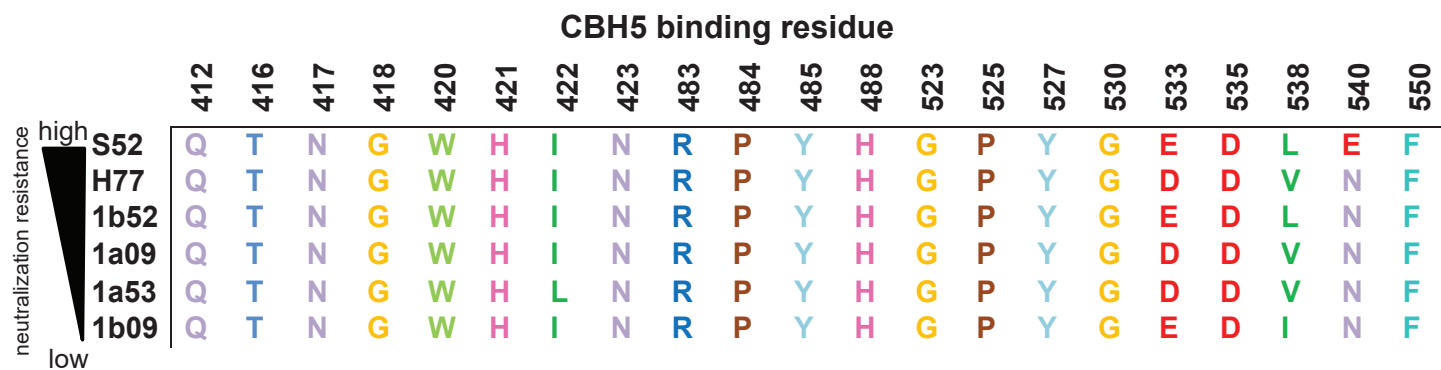


Supplemental Figure 1



All HCVcc and HCVpp neutralization curves not shown in Figure 4. (A) Patient-derived E1E2 sequences were cloned into full-length replication competent HCV (HCVcc). HCVcc viral supernatants were tested in duplicate for neutralization sensitivity to serial dilutions of up to 7 mAbs or IgG. Colors indicate mAb tested (dark blue=CBH5, red=HC84.26, green=HC84.22, purple=HC33.4, orange=AR3A, light blue=AR4A, cyan=AR3C, pink=AR5A). Error bars indicate standard deviations. (B) Patient-derived E1E2 sequences were used to generate HCVpp. HCVpp were tested in duplicate for neutralization sensitivity to serial dilutions of 1-2 mAbs or IgG. Colors indicate mAb tested (light blue=AR4A, cyan=AR3C, pink=AR5A). Error bars indicate standard deviations.

Supplemental Figure 2



Comparison of mAb binding residues of HCVcc variants. Five mAbs were tested for neutralizing activity against multiple HCVcc variants. HCVcc variants are listed in descending order from highest to lowest neutralization resistance as determined by IC₅₀. Amino acids present in each HCVcc variant at previously identified binding residues for each mAb are represented using standard IUPAC abbreviations.

Supplemental Table 1 HCVcc and HCVpp specific infectivity measurements

HCVcc specific infectivity

	IU/mL	SFU/mL (rep1)	SFU/mL (rep2)	SFU/IU (rep1)	SFU/IU (rep2)	Average SFU/IU
1a01	1.32E+05	1.33E+04	8.88E+03	1.01E-01	6.73E-02	8.42E-02
1a09	1.38E+05	1.40E+04	5.64E+03	1.02E-01	4.09E-02	7.13E-02
1a22	1.87E+05	1.04E+04	8.96E+03	5.53E-02	4.78E-02	5.15E-02
1a38	9.86E+04	9.76E+03	5.06E+03	9.90E-02	5.13E-02	7.52E-02
1a53	8.13E+04	1.02E+04	1.41E+04	1.25E-01	1.74E-01	1.49E-01
1a72	1.01E+05	1.08E+04	7.92E+03	1.07E-01	7.85E-02	9.28E-02
H77	2.27E+05	2.04E+03	1.24E+04	8.99E-03	5.46E-02	3.18E-02
1a157	5.50E+05	3.72E+04	2.81E+04	6.76E-02	5.11E-02	5.93E-02
1b09	2.32E+04	3.30E+03	4.84E+03	1.42E-01	2.08E-01	1.75E-01
1b20	3.96E+04	1.24E+04	4.03E+04	3.13E-01	1.02E+00	6.66E-01
1b52	2.39E+05	2.29E+04	9.66E+03	9.58E-02	4.04E-02	6.81E-02
1b58	2.86E+04	7.28E+03	2.06E+04	2.55E-01	7.19E-01	4.87E-01

HCVpp specific infectivity

	IU/mL (rep1)	IU/mL (rep2)	RLU/mL (rep1)	RLU/mL (rep2)	RLU/IU (rep1)	RLU/IU (rep2)	Average RLU/IU
1a01	9.32E+09	9.74E+09	9.62E+07	1.39E+08	1.03E-02	1.42E-02	1.23E-02
1a09	9.30E+09	1.67E+10	1.63E+08	2.52E+08	1.76E-02	1.51E-02	1.63E-02
1a22	8.13E+09	1.18E+10	2.16E+07	2.65E+07	2.66E-03	2.26E-03	2.46E-03
1a38	6.75E+09	8.97E+09	4.95E+08	7.60E+08	7.33E-02	8.47E-02	7.90E-02
1a53	1.01E+10	1.58E+10	1.61E+07	3.45E+07	1.60E-03	2.18E-03	1.89E-03
1a72	1.14E+10	1.46E+10	1.00E+08	1.74E+08	8.82E-03	1.19E-02	1.04E-02
H77	7.60E+09	5.83E+09	7.10E+07	7.49E+07	9.34E-03	1.29E-02	1.11E-02
1a157	1.63E+10	2.55E+09	3.53E+07	4.16E+07	2.17E-03	1.63E-02	9.26E-03
1b09	5.53E+09	3.12E+09	1.50E+08	2.70E+08	2.72E-02	8.68E-02	5.70E-02
1b20	1.47E+10	4.30E+09	5.76E+07	1.20E+08	3.92E-03	2.79E-02	1.59E-02
1b52	6.08E+09	5.39E+09	3.01E+08	3.12E+08	4.95E-02	5.79E-02	5.37E-02
1b58	6.71E+09	1.16E+10	4.79E+07	4.84E+07	7.15E-03	4.17E-03	5.66E-03