

# Correspondence Analysis of Values Segments and Voting Behaviour

Figure S6.1 shows a version of Figure 4 where all the years are presented in a single plot. The points indicating the same political party are connected by lines.

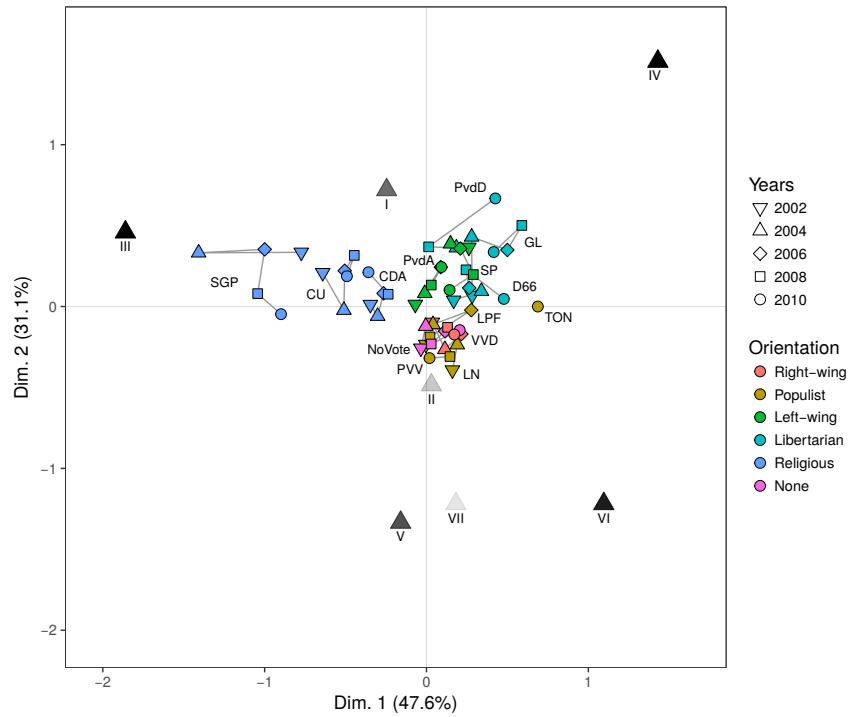


Figure S6.1: Correspondence analysis for the segments and reported votes, using the adjusted poststratification weights applied to the posterior probabilities. The symbols for the segments are faded according to the explained inertia so that darker points fit better. No shading was done for the political parties.