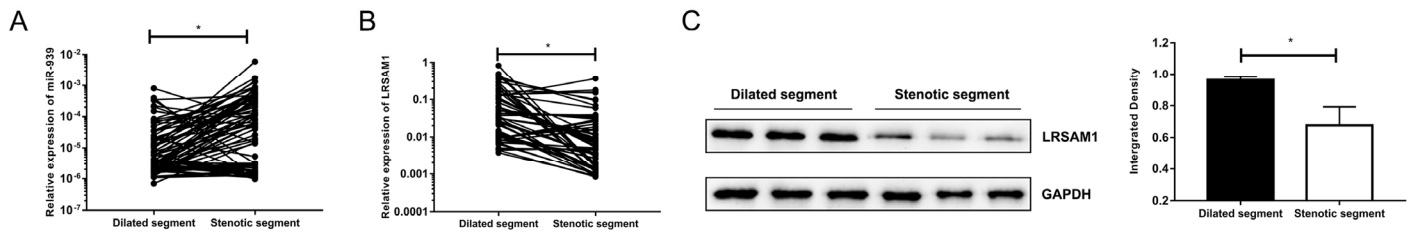


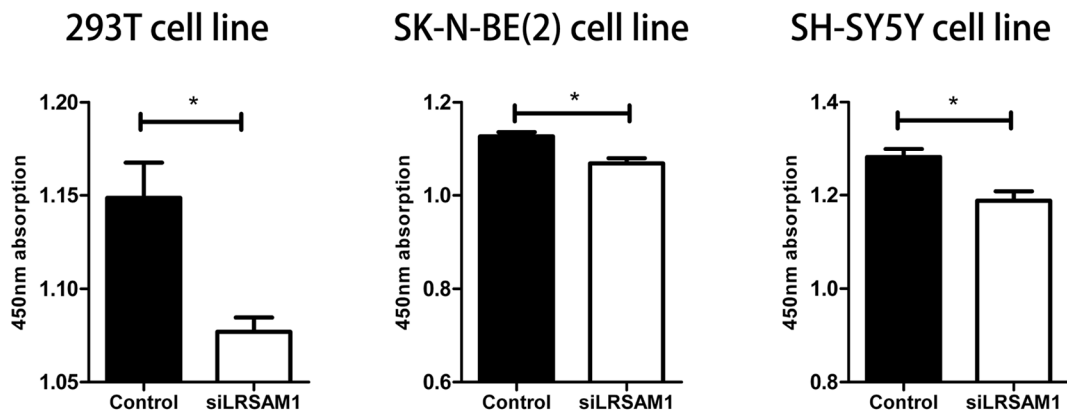
**SUPPLEMENTARY MATERIAL**

**Table S1. Primer sequence used for qRT-PCR and miR-939, siRNA related sequence.**

LRSAM1	F: AAGGTGCTGATCGTCCACAC R: TGCCCCAGATCGTCAGGAA
UBE2D3	F: CCATATCAAGGCGGTGTATTCTT R: GGCGACCACTGTGATCTTAGA
LNX2	F: GGAACAACAAGTGATGAGATGGT R: CACAGGGTGTGTCTAGTGGC
GAPDH	F: GCACCGTCAAGGCTGAGAAC R: GGATCTCGCTCCTGGAAGATG
LRSAM1 siRNA	Sense: GCUCUCAGAGAUUCCAUUUT Antisense: AAAUGGAAUCUCUGAGAGCTT
Negative control	Sense: UUCUCCGAACGUGUCACGUTT Antisense: ACGUGACACGUUCGGAGAATT
Hsa-miR-939 mimics	Sense: UGGGGAGCUGAGGCUCUGGGGGUG Antisense: CCCCAGAGCCUCAGCUCCCAUAU
Negative control	Sense: UUCUCCGAACGUGUCACGUTT Antisense: ACGUGACACGUUCGGAGAATT



**Figure S1. Expression of miR-939 and LRSAM1 in different segments of HSCR bowels.** (A) Mir-939 was significantly overexpressed in stenotic segment compared with dilated segment of HSCR (n=80). (B, C) Expression of LRSAM1 significantly increased in dilated segment of HSCR in mRNA (B) and protein (C) (n=80). \*indicates significant difference compared with control group, P<0.05.



**Figure S2. Knockdown of LRSAM1 suppressed cell proliferation.** All cells transfected with LRSAM1 siRNA showed impaired cell proliferation compared with control. \*indicates significant difference compared with control group, P<0.05.