

281 **Supplemental Figure 1. *T. cruzi* amastigotes maintain a close association with the host**  
282 **mitochondria.** Bar graphs representing the % of grouped (A and B) or individual (C and D)  
283 intracellular *T. cruzi* amastigotes that are proximal to (p) or distant (d) from the host Golgi  
284 apparatus (**A**; p value = 0.36) or the MTOC (**B**; p value =0.013), ER (**C**) or mitochondria (**D**; p  
285 value <0.0001) accompanied of representative fluorescence images. n > 200 parasites for each  
286 of 3 independent experiments. **E, F and G.** Immunofluorescence images of infected NHDF fixed  
287 at 48hpi stained with ATP5B antibodies (green) (**E**) or TOM20 antibodies (green) (**F,G**).  
288 Parasites were stained with rabbit anti-*T. cruzi* antiserum (red) and DNA was stained with DAPI  
289 (blue). Scale bar = 5  $\mu$ m.

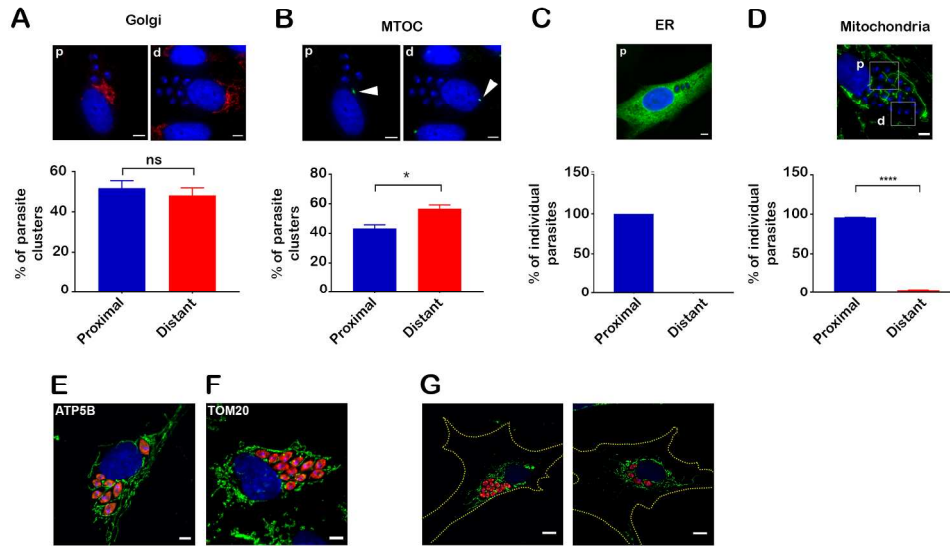
290

291 **Supplemental Movies 1 and 2.** Fluorescence time-lapse movie of adherent NHDF expressing  
292 mCherry in the mitochondrial matrix (mito-mcherry, red) and infected with GFP-expressing *T.*  
293 *cruzi* parasites (green) (36 hpi) showing the proximity between the *T. cruzi* amastigotes and the  
294 host mitochondria. Images were taken every 5 min and the movie is designed to play 3 frames  
295 per second. Time of recording is indicated in the upper left corner of each frame.

296

297 **Supplemental Movies 3 and 4.** Fluorescence time-lapse movie of *T. cruzi*-GFP infected  
298 NHDF-mito-mCherry (36 hpi) initiated 180 min post-replating following trypsinization, highlight  
299 the dynamics of the host mitochondrial network in live cells (red) and the proximity between host  
300 mitochondria and intracellular amastigotes (green) during cell spreading. Sample was imaged  
301 every 5 min and the movie is designed to play 3 frames per second. Time of recording is  
302 indicated in the upper left corner of each frame.

## Supplemental Figure 1



224x147mm (300 x 300 DPI)