

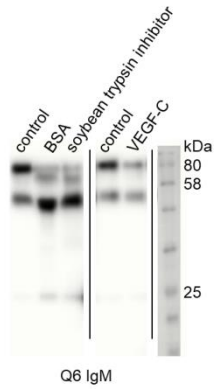
Mouse Antibody of IgM Class Is Prone to Non-Enzymatic Cleavage between CH1 and CH2 Domains

Supplementary Figures

Tomasz Klaus^{1,2}, Krystyna Stalińska², Dominik Czaplicki², Paweł Mak³, Bożena Skupien-Rabian^{1,4}, Sylwia Kedracka-Krok⁴, Karolina Wiatrowska², Monika Bzowska², Monika Machula², Joanna Bereta^{2*}

¹Malopolska Centre of Biotechnology, Jagiellonian University in Kraków, Gronostajowa 7A, 30-387 Kraków, Poland; ²Department of Cell Biochemistry, ³Department of Analytical Biochemistry, ⁴Department of Physical Biochemistry, Faculty of Biochemistry, Biophysics and Biotechnology, Jagiellonian University in Kraków, Gronostajowa 7, 30-387 Kraków, Poland;

* To whom correspondence should be addressed: Joanna Bereta, Department of Cell Biochemistry, Faculty of Biochemistry, Biophysics and Biotechnology, Jagiellonian University in Kraków, Gronostajowa 7, 30-387 Kraków, Poland; telephone: +48 12 664 63 56; Fax: +48 12 664 69 02; e-mail: joanna.bereta@uj.edu.pl



Supplementary Figure S1 – **IgM cleavage induced by various proteins.** IgMs were incubated at 42 °C for 72 h with a hundredfold excess of the indicated proteins. Then, the samples were analyzed using western blotting with anti-mouse IgM κ antibody. The image combines data from one blot. Representative result of two independent experiments is shown.

Figure 2c

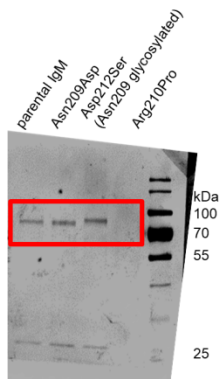


Figure 3a

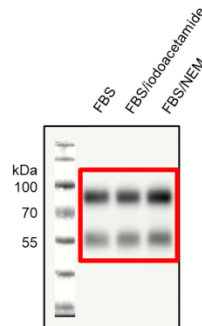
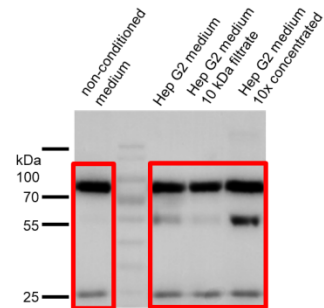


Figure 4c



Supplementary Figure S2 – **Full-length versions of blots presented in the main manuscript.** Red frames indicate fragments presented in the Figures 2c, 3a and 4c in the main text.

Figure 2c

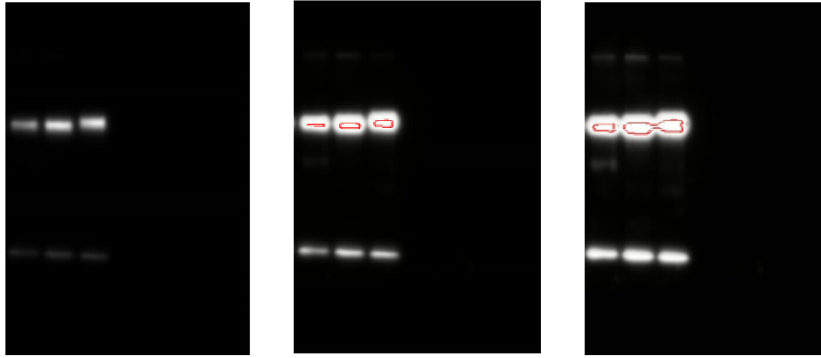
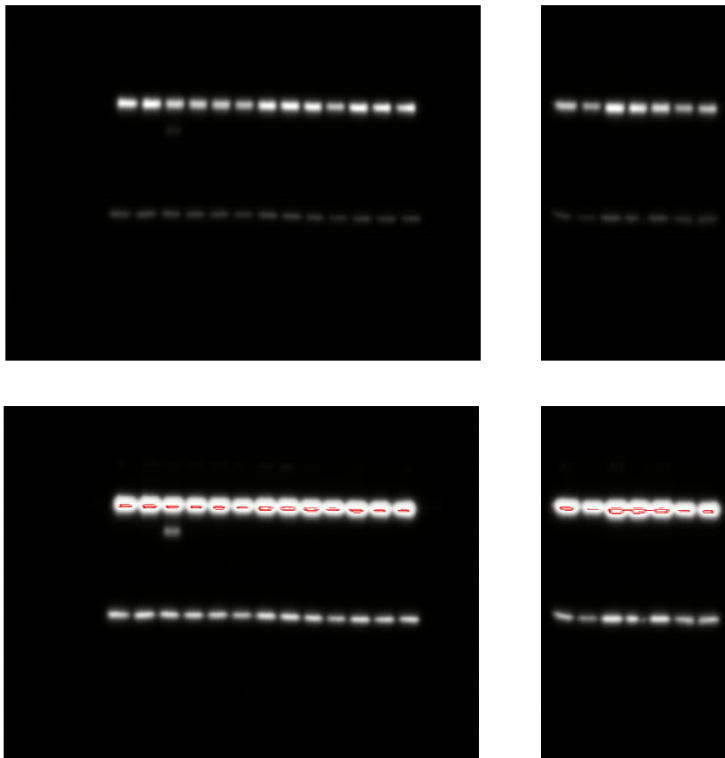


Figure 2d



Supplementary Figure 3 – **Serial exposures of overexposed blots presented in Figures 2c and 2d in the manuscript.** Overexposed areas are marked in red.