

Caveolin 1 Promotes Renal Water and Salt Reabsorption

**Yan Willière^{1,§}, Aljona Borschewski^{1,§}, Andreas Patzak²,
Tatiana Nikitina², Carsten Dittmayer¹, Anna L. Daigeler¹,
Markus Schuelke³, Sebastian Bachmann¹, and Kerim
Mutig^{1,*}**

¹Department of Anatomy, Charité-Universitätsmedizin Berlin,
Berlin, Germany;

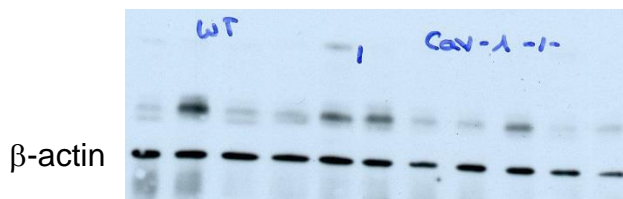
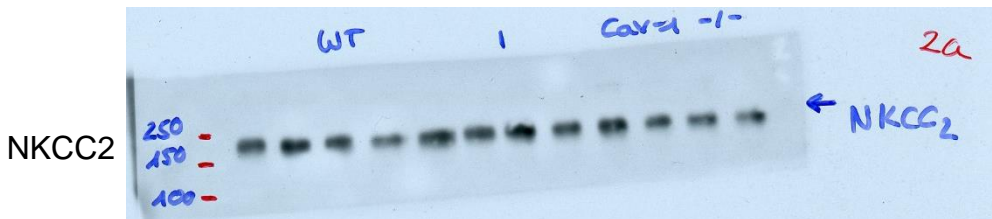
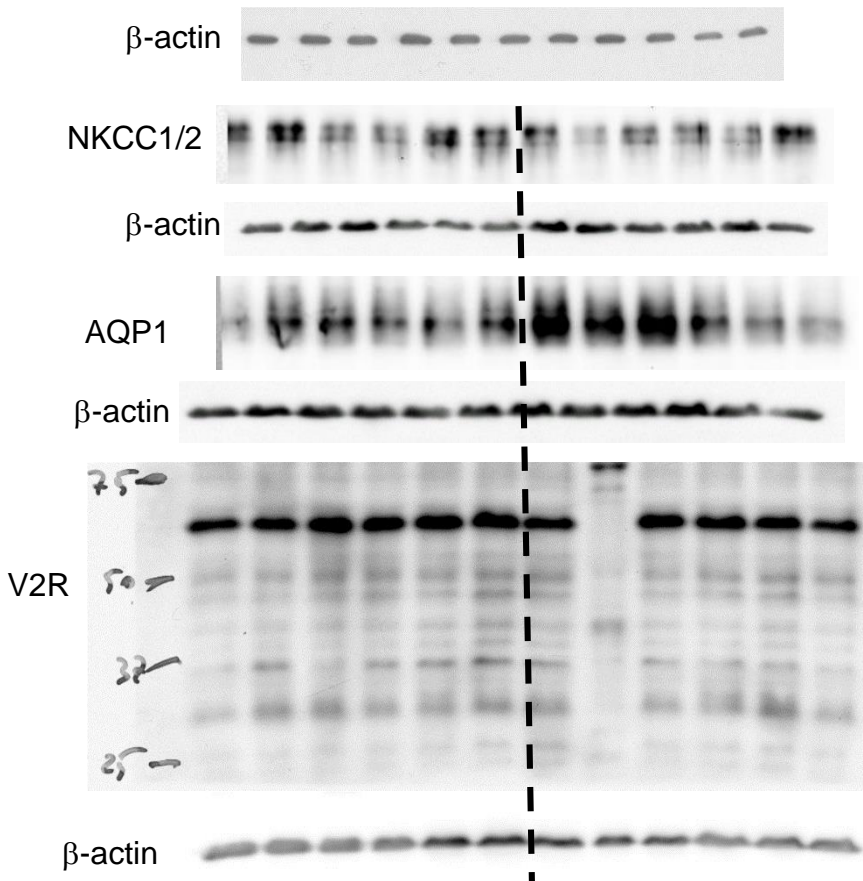
²Department of Physiology, Charité-Universitätsmedizin
Berlin, Berlin, Germany

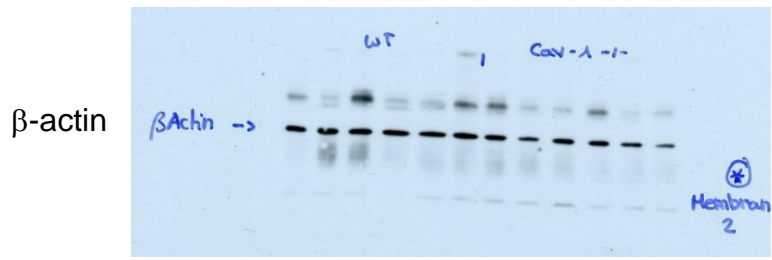
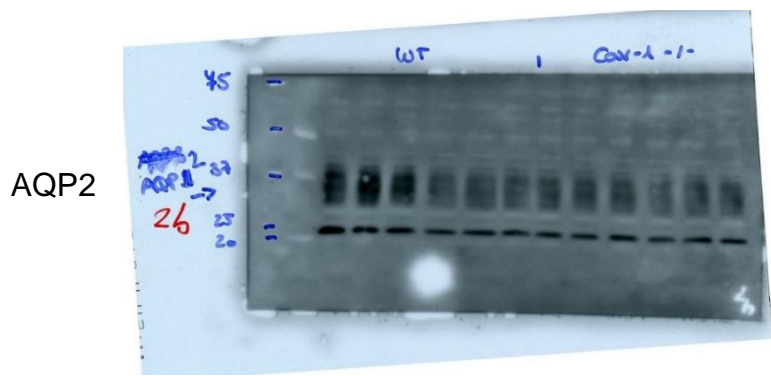
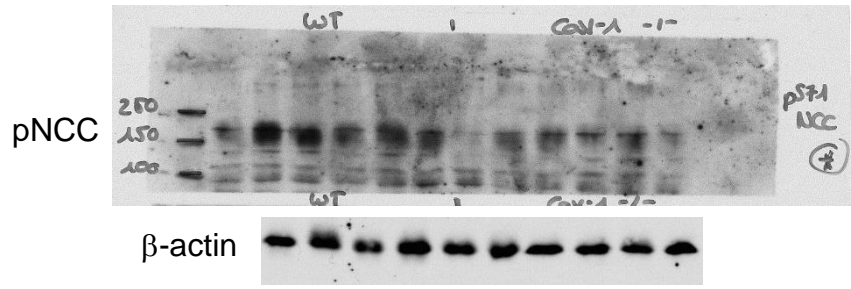
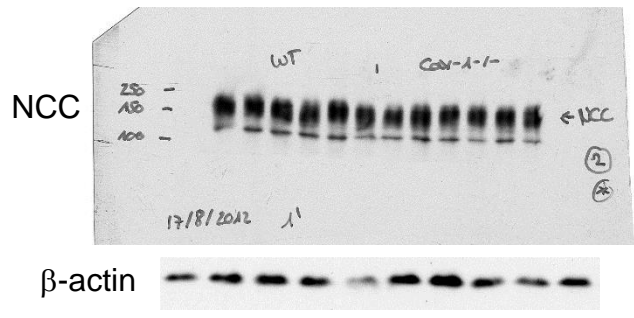
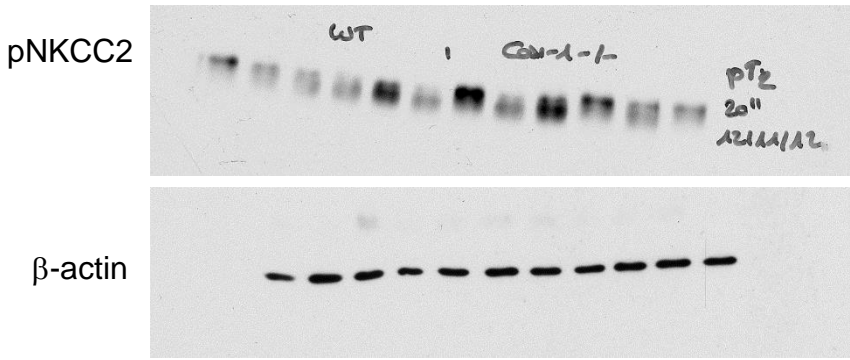
³Department of Neuropediatrics, Charité-
Universitätsmedizin Berlin, Berlin, Germany

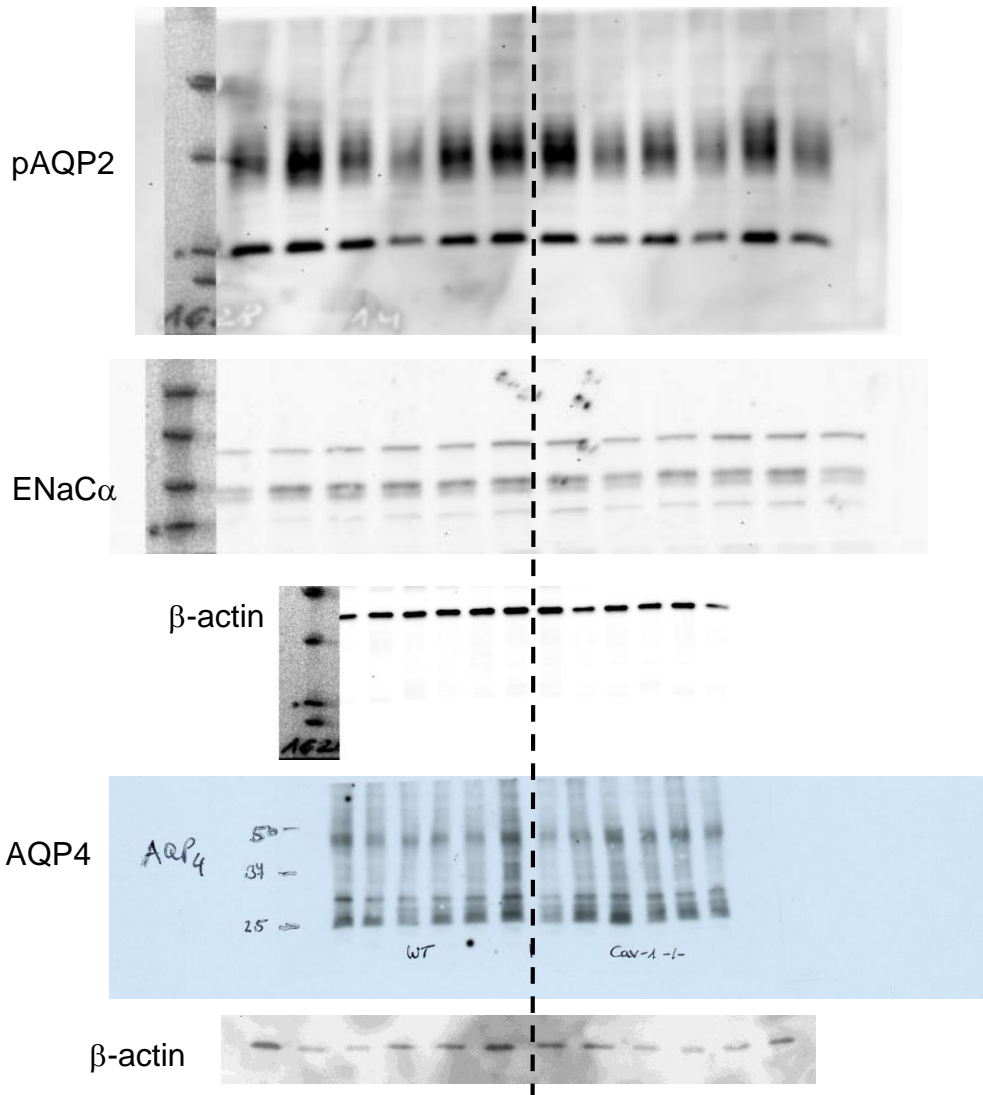
* kerim.mutig@charite.de

§ These authors have contributed to the study equally.

Original immunoblot scans







Original immunoblot scans for Cav1, alpha subunit of Na/K-ATPase (Na⁺/K⁺), NKCC1/2 (antibody recognizes both NKCC isoforms), AQP1, V2R, NKCC2, phosphorylated (p) NKCC2 (pT96/T101-NKCC2), NCC, pNCC (pS71-NCC), AQP2, pAQP2 (pS256-AQP2), alpha subunit of epithelial sodium channel (ENaC α) and aquaporin 4 (AQP4); pAQP2 and ENaC α were detected on the same membrane cut according to their molecular sizes and therefore share the same loading control; loading controls via β -actin detection are shown below the corresponding immunoblots.