

Supporting information

Supporting figure 1. Silver stain. Silver stain was performed on SDS-PAGE after loading equally with 5×10^{10} genome-containing particles of purified AAV6-CMV-EGFP (lane 2), AAV6-GFAP-EGFP (lane 3), AAVshH10-CMV-EGFP (lane 4), AAVshH10-CMV-EGFP (lane 5), and AAVshH10-GFAP-EGFP (lane 6). This revealed 3 virion protein bands of vp1, vp2, and vp3, respectively, in each sample, corresponding to the particular AAV capsid proteins. Lane 1 shows molecular weight (M) protein ladder in KDa.

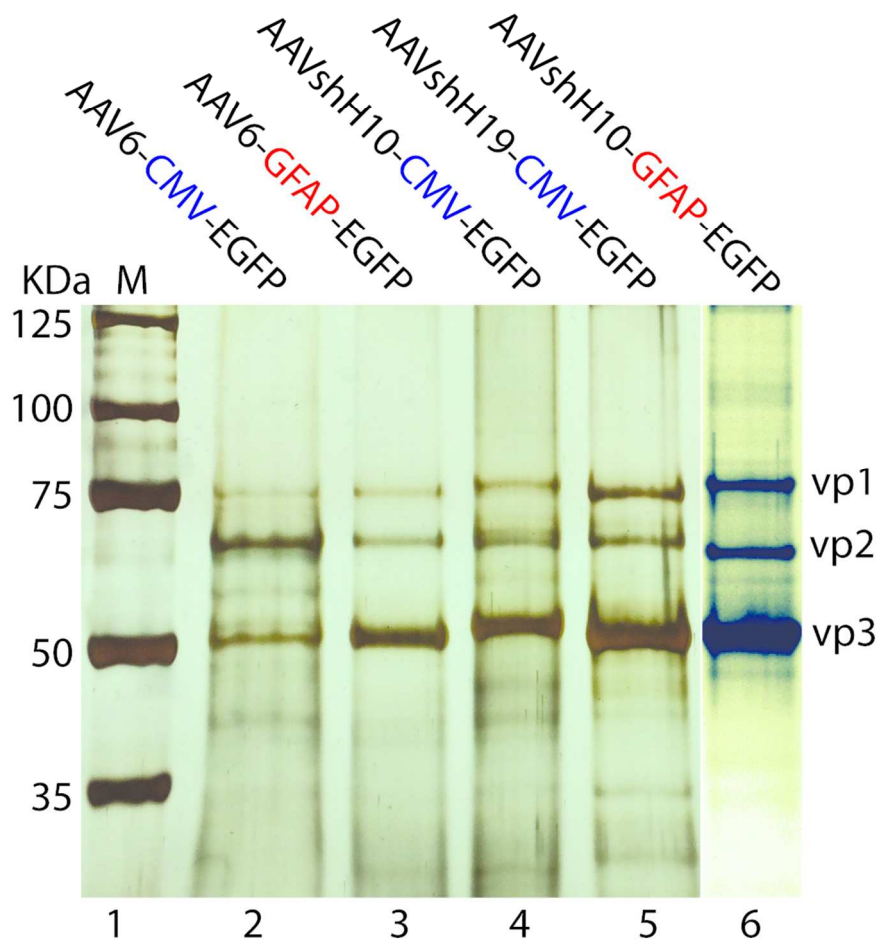
Supporting figure 2. Specificity of GFP antibodies and IHC using IgGs as the negative controls. GFP monoclonal (1:200) (**a**, left panel) and rabbit polyclonal (1:200) (**b**, left panel) antibody immunostaining of DRG sections from naïve rat, with Hoechst nuclear counterstain (**a** and **b**, white color in middle panels) and merged images in right panels (**a** and **b**). Negative controls for double-labeling performed using rabbit and mouse IgG controls (**c**), as well goat and mouse IgG controls (**d**). Note: Neuronal nuclei can be seen in back & white images (**a** and **b**) as larger and less intensively stained compared with SGC nuclei, but they are poorly seen in blue color (**c** and **d**). Scale bar: 100 μ m for all panels.

Supporting figure 3. Transduction profile of AAV6-CMV-EGFP, AAVshH10-CMV-EGFP, and AAVshH19-CMV-EGFP. High-efficient EGFP expression was found in all-sized subpopulation of neurons (green) colabeled by a pan-neuron maker Tubb3 (red)

5 weeks after intraganglionic injection of AAV6-CMV-EGFP (**a, b**) or AAVshH10-CMV-EGFP (**c, d**). EGFP was predominantly found in large-sized neurons (green) colabeled by Tubb3 (red) 5 weeks after intraganglionic injection of AAVshH19-CMV-EGFP (**e, f**). Scale bar: 100 μ m for all panels.

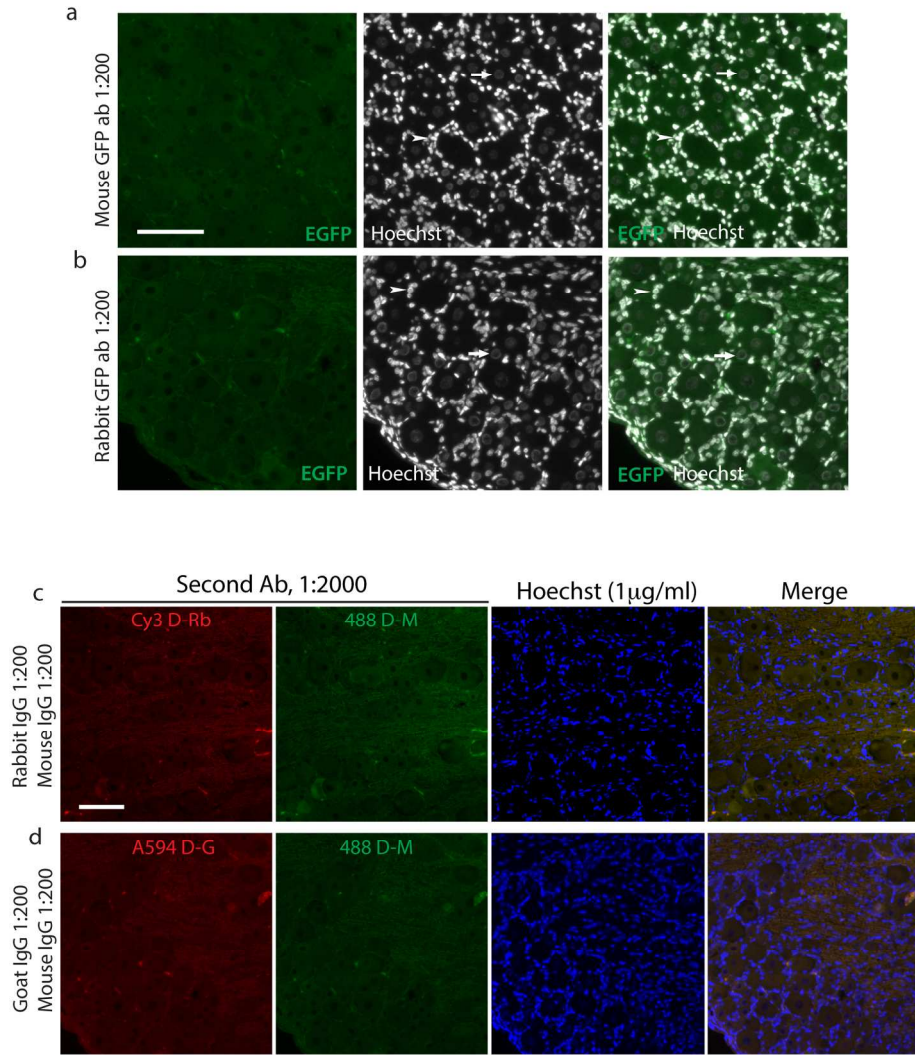
Supporting figure 4. Counting SGC numbers in DRG section. Immunofluorescence double labeling for GFAP (**a**) with EGFP (**b**) or GS (**c**) with EGFP (**d**) in a L5 DRG of AAV6-GFAP-EGFP injected rat. The filled arrowheads point to clearly double-labeled SGCs, and empty arrowheads denote GFAP- or GS-positive SGCs that are negative for EGFP. Scale bars: 100 μ m for all panels.

Supporting Figure 1



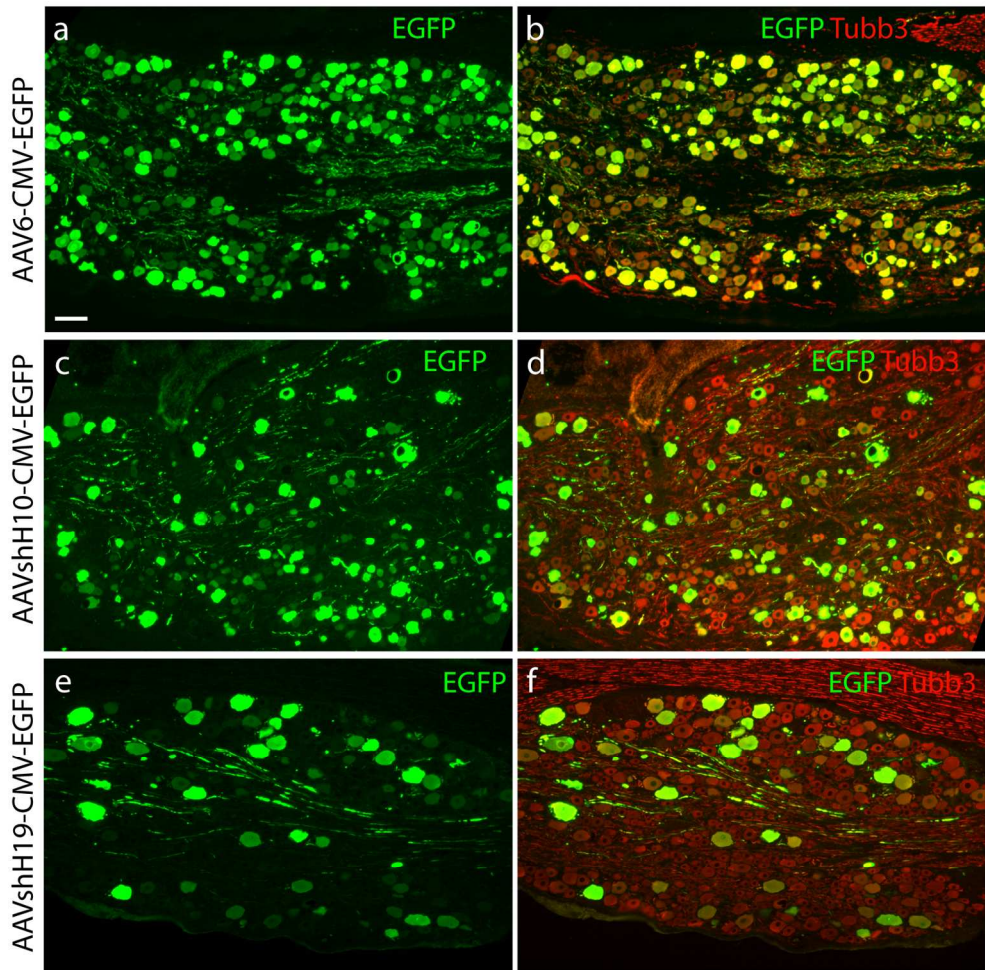
87x120mm (300 x 300 DPI)

Supporting figure 2



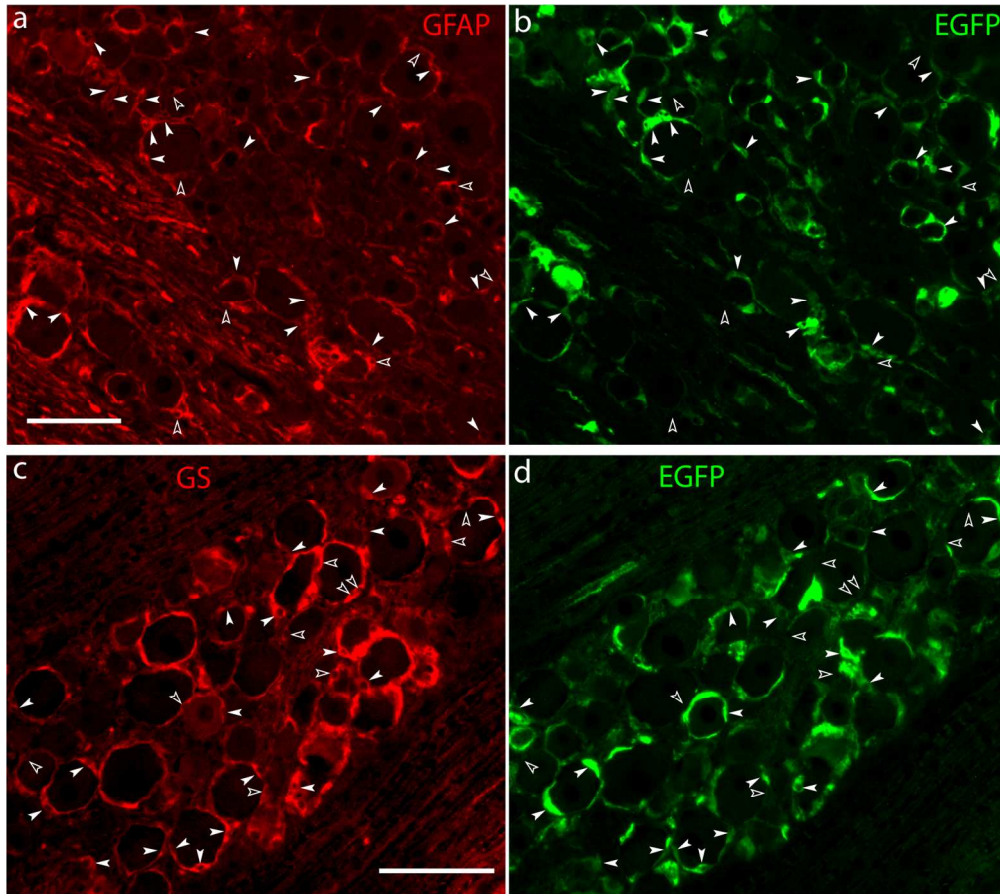
155x203mm (300 x 300 DPI)

Supporting Figure3



138x170mm (300 x 300 DPI)

Supporting figure 4



150x163mm (300 x 300 DPI)