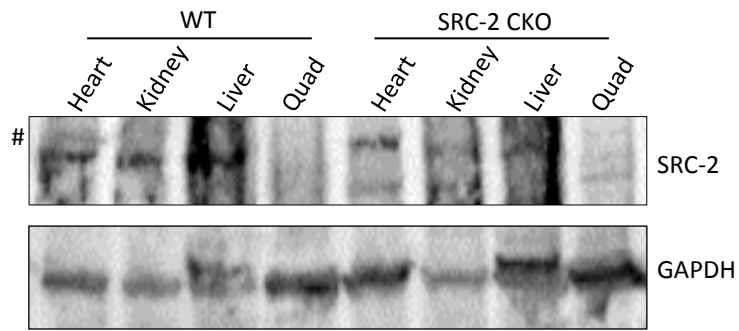
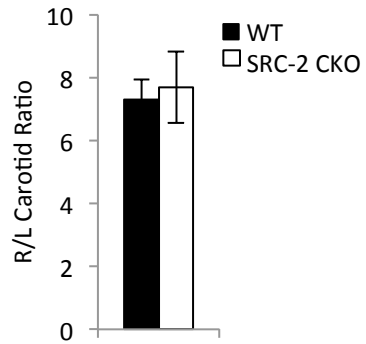


Supplemental Figure 1. SRC-2 knockdown does not effect hypertrophic gene expression in response to hypertrophic drugs. **A**, qPCR on total RNA isolated from H9c2 treated with control or siSRC2 siRNAs. Rpl32 is used as an internal control and data are presented relative to siControl. Cells were treated for 24 hrs with AngII or phenylephrine as indicated. **B**, qPCR on total RNA isolated from primary cardiomyocytes from SRC-2 iCKO hearts 2 months after vehicle or tamoxifen injection. Rpl32 is used as an internal control and data are presented relative to vehicle control. Cells were treated for 12 hrs with AngII. Data are presented as the mean +/- sem. Statistics were performed with a standard student's t-test. **p \geq 0.01.



Supplemental Figure 2. SRC-2 expression in WT and SRC-2 CKO tissues. Whole tissue lysates were immunoblotted for SRC-2 expression from WT or SRC-2 CKO animals. The '#' represents a non-specific band detected in both WT and SRC-2 CKO hearts.



Supplemental Figure 3. Extent of aortic constriction is similar in WT and SRC-2 CKO.

Twenty-four hours after TAC surgery, right and left carotid flow velocities were measured in all animals and a ratio of right/left is shown as a measurement of the amount of occlusion created during the surgery. n=8-12.