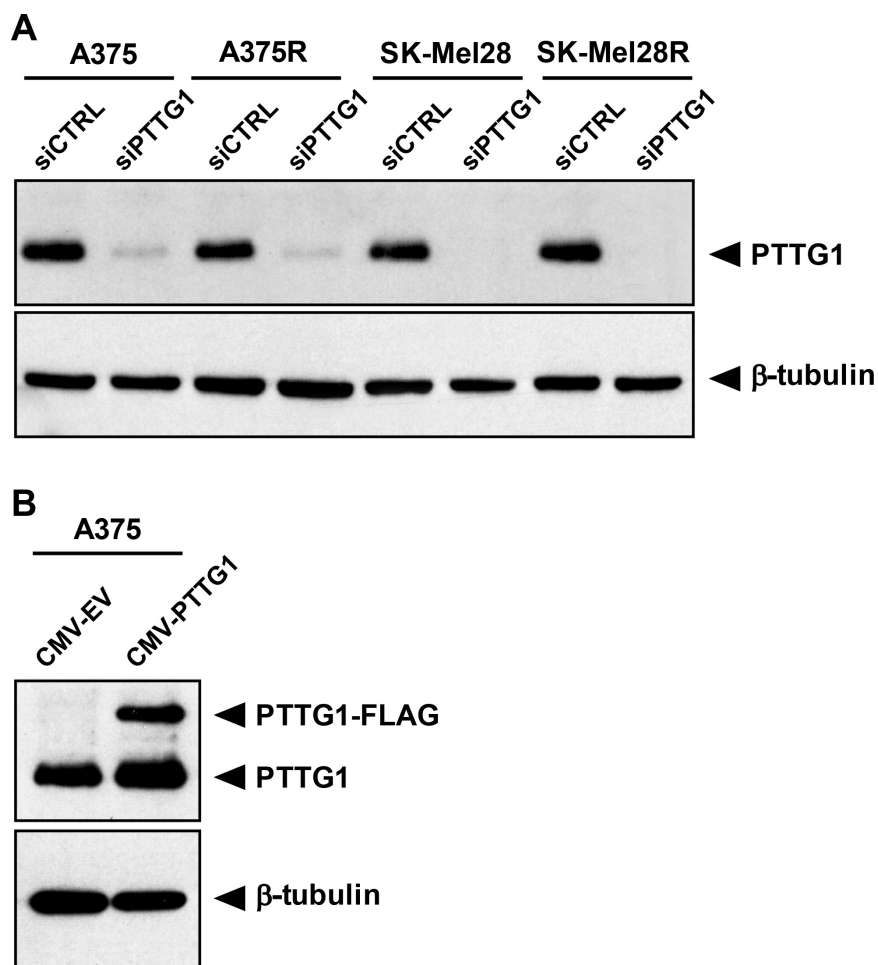


Targeting the *PTTG1* oncogene impairs proliferation and invasiveness of melanoma cells sensitive or with acquired resistance to the BRAF inhibitor dabrafenib

SUPPLEMENTARY MATERIALS



Supplementary Figure 1: Evaluation of PTTG1 protein levels after six days of *PTTG1* silencing or over-expression. (A) Melanoma cells were transiently transfected with siPTTG1 or siCTRL and after six days of culture, cell extracts were prepared and analyzed by immunoblotting using antibodies against PTTG1 or against β -tubulin. The results are representative of three independent experiments. (B) A375 cells were transiently transfected with CMV-PTTG1 or CMV-EV vectors. After six days, cell lysates were analyzed by immunoblotting using antibodies against PTTG1 or against β -tubulin. The results are representative of three independent experiments.