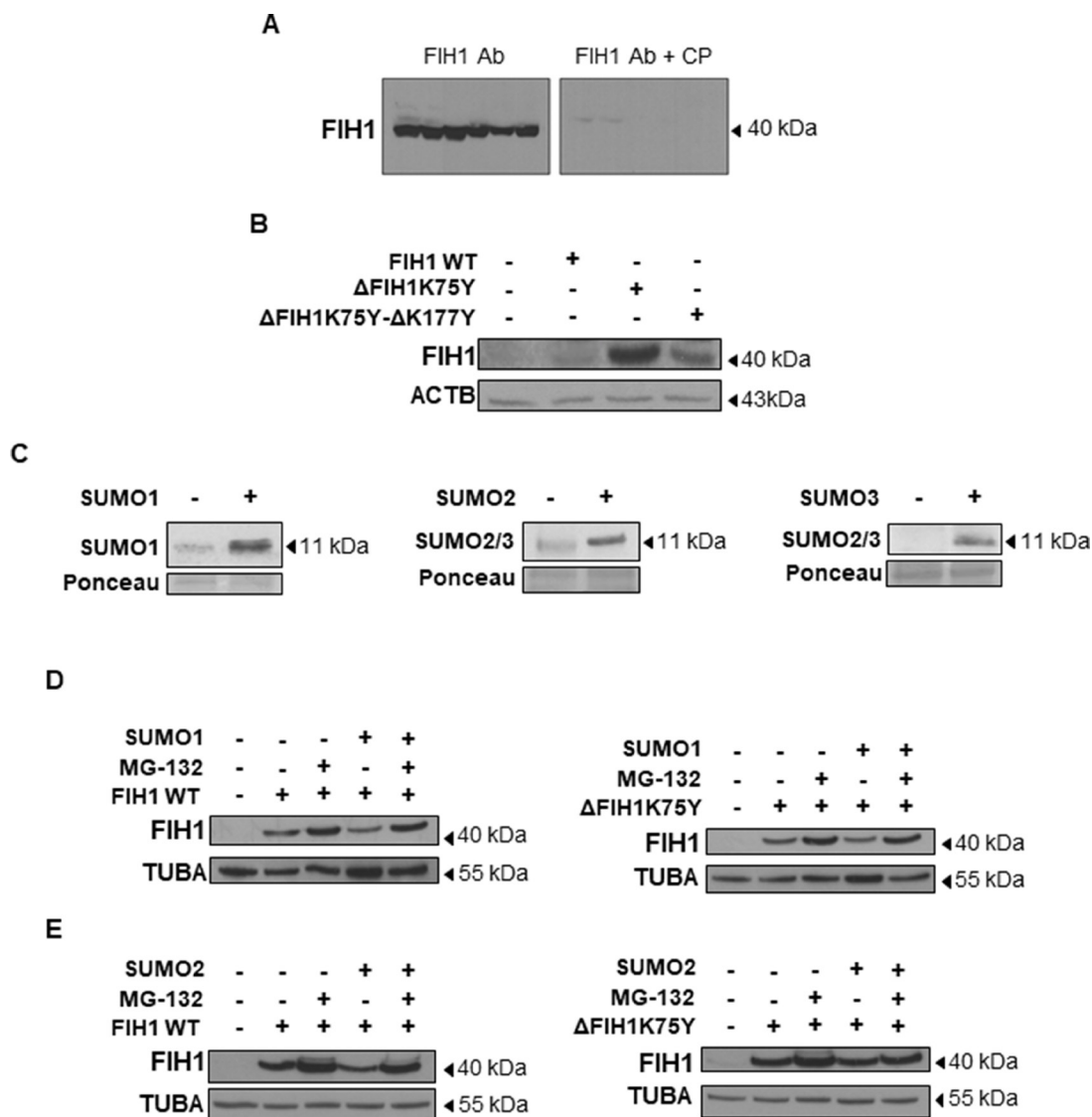


Factor inhibiting HIF1-A novel target of SUMOylation in the human placenta

SUPPLEMENTARY MATERIALS



Supplementary Figure 1: (A) Western Blot for FIH1 in first trimester placental tissue probed with FIH1 antibody (left) and FIH1 antibody + competing peptide (right). (B) Representative Western Blots of FIH1 following FIH1 overexpression using plasmids construct containing either FIH1 WT, FIH1 ΔK75Y, or FIH1 ΔK75Y ΔK177Y. FIH1 antibody specifically recognized the C-terminal part of FIH1 protein. (C) Western Blot for SUMO1 and SUMO2/3 in JEG-3 cells following overexpression of SUMO1, SUMO2 or SUMO3 constructs. (D) Representative Western Blots for FIH1 in JEG-3 following overexpression of FIH1 WT (left panel) or FIH1 ΔK75Y (right panel) and SUMO1 protein in the presence and absence of the MG-132. (E) Representative Western Blots for FIH1 in JEG-3 following overexpression of FIH1 WT (left panel) or FIH1 ΔK75Y (right panel) and SUMO2 protein in the presence and absence of the MG-132.