

Supplementary Information

Title

Salient type 1 interleukin 1 receptor expression in peripheral non-immune cells

Authors and Affiliations

Anping Song¹, Ling Zhu^{2,3}, Gowthami Gorantla², Olimpia Berdysz², Stephanie A. Amici^{2,4}, Mireia Guerau-de-Arellano^{2,4,5,6}, Kathryn M. Madalena^{6,7}, Jessica K. Lerch^{6,7}, Xiaoyu Liu^{2,8,9}, and Ning Quan^{2,8,9}

¹ Department of Oncology, Tongji Hospital, Huazhong University of Science and Technology Tongji Medical College, Wuhan, Hubei, 430030, P.R.China

² Institute for Behavioral Medicine Research, College of Medicine, The Ohio State University, Columbus, OH 43210, USA

³ West China School of Basic Medical Sciences and Forensic Medicine, Sichuan University, Chengdu, Sichuan, 610041, P.R.China

⁴ School of Health and Rehabilitation Sciences, Division of Medical Laboratory Science, College of Medicine, Wexner Medical Center, The Ohio State University, Columbus, OH 43210, USA

⁵ Department of Microbial Infection and Immunity, The Ohio State University, Columbus, OH 43210, USA

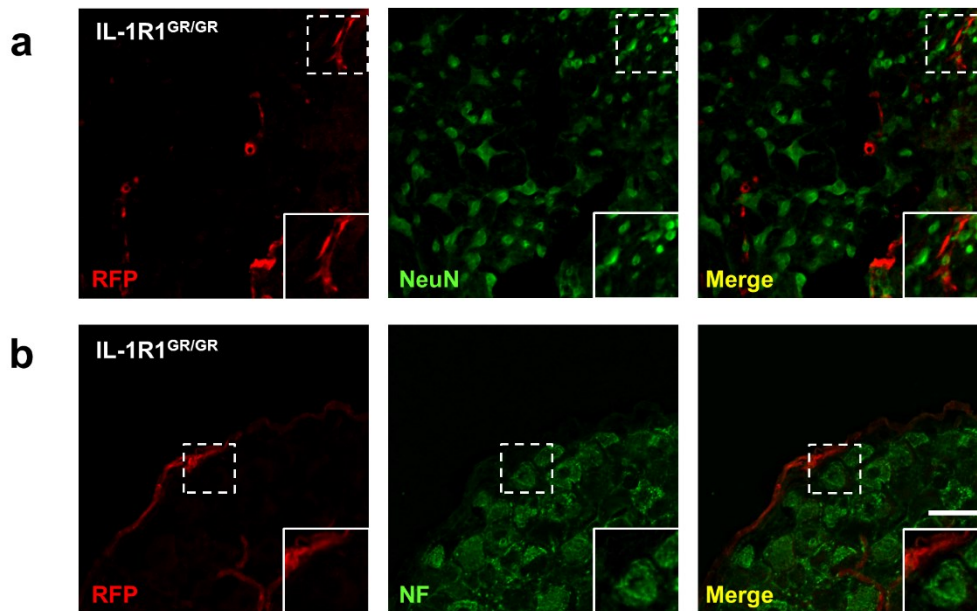
⁶ Department of Neuroscience, The Ohio State University, Columbus, OH 43210, USA

⁷ Center for Brain and Spinal Cord Repair, The Ohio State University, Columbus, OH 43210, USA

⁸ Division of Biosciences, College of Dentistry, The Ohio State University, Columbus, OH 43210, USA

⁹ Corresponding authors: Xiaoyu Liu and Ning Quan, Institute for Behavioral Medicine Research, 460 Medical Center Drive, Columbus, OH 43210, USA, liu.1933@osu.edu or quan.14@osu.edu

Figure S1



Supplemental Figure 1. Spinal cord and DRG neurons do not express IL-1R1. (a) Immunofluorescence labeling of RFP and NeuN in the spinal cord sections. (b) Immunofluorescence labeling of RFP and neurofilament (NF) in the DRG sections. Both sections were from IL-1R1^{GR/GR} mice. Dashed square marks the area shown at higher magnification on the bottom right. Scale bar, 50 μ m.