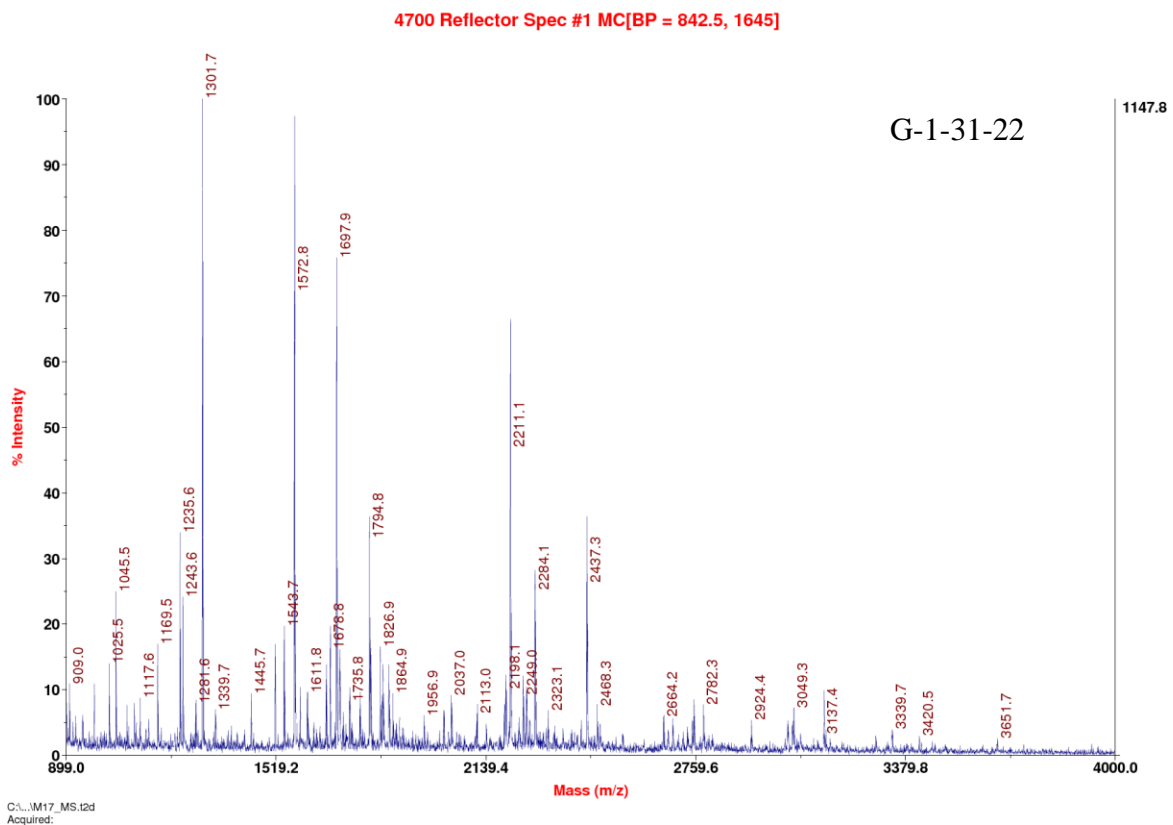


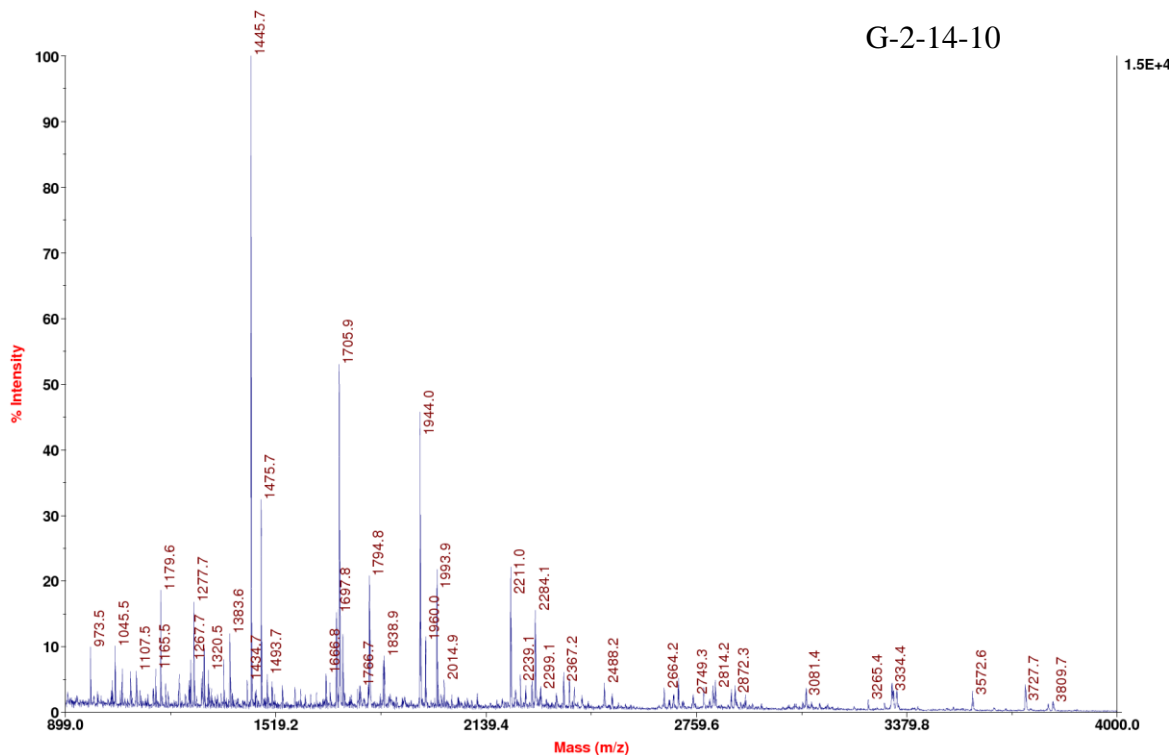
## Additional file 5: Exemplary MALDI-TOF mass spectra

Representative peptide maps obtained from the tryptic digests of the Fab fragments from the G-1-31-22, G-2-14-10, G-5-32-5, G-6-42-42, G-6-42-71, G-7-24-17 and G-7-27-18 mAbs are presented below. The corresponding protein bands were excised from the non-reducing and non-boiled SDS-PAGE gel, reduced and alkylated prior to cleavage with trypsin. The presented MALDI-TOF spectra were acquired using reflector mode with a 4800 Plus instrument (Applied Biosystems, Waltham, MA, USA).  $\alpha$ -Cyano-4-hydroxy-cinnamic acid dissolved in 50:50 water/acetonitrile with 0.1% TFA (final concentration) was the matrix used.



4700 Reflector Spec #1 MC[BP = 1445.7, 14783]

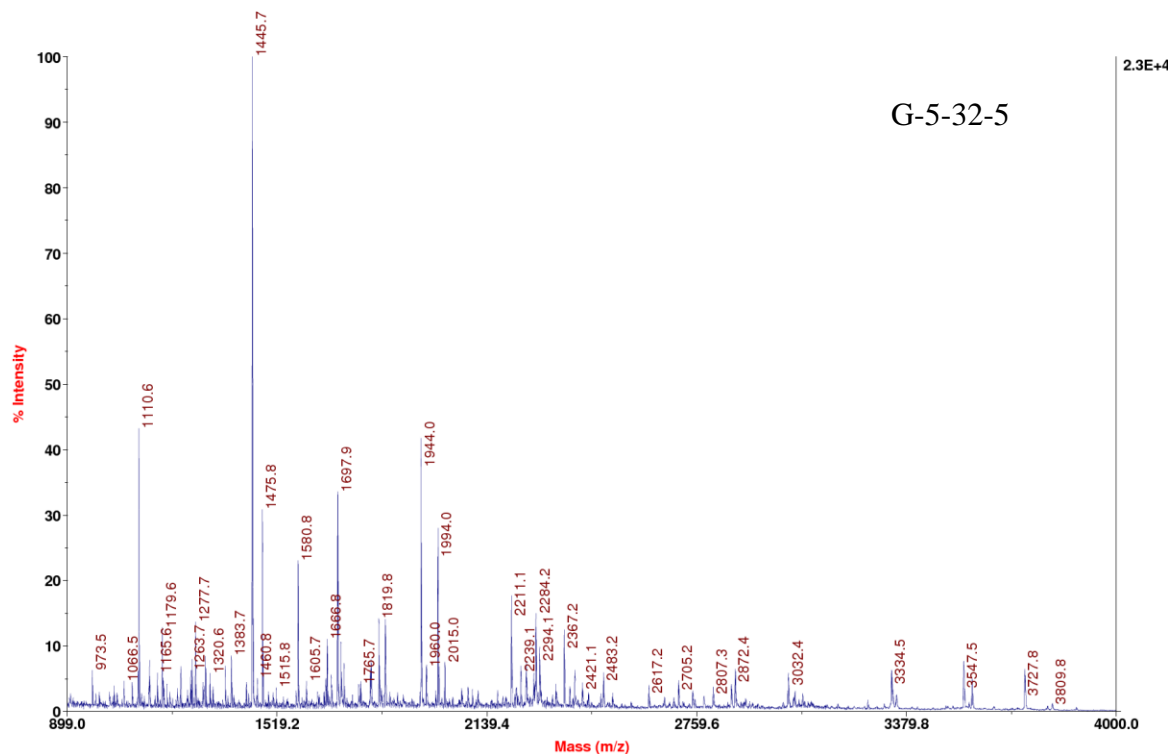
G-2-14-10



CA...IH9\_MS.t2d  
Acquired:

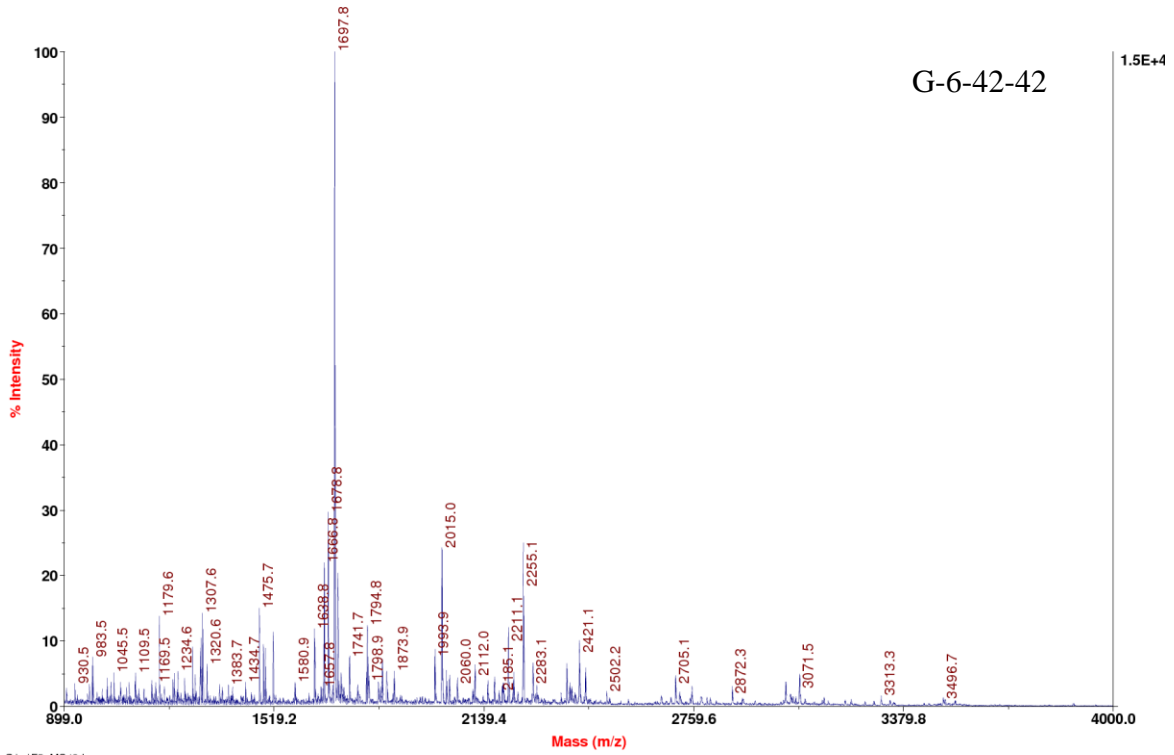
4700 Reflector Spec #1 MC[BP = 1445.7, 22694]

G-5-32-5

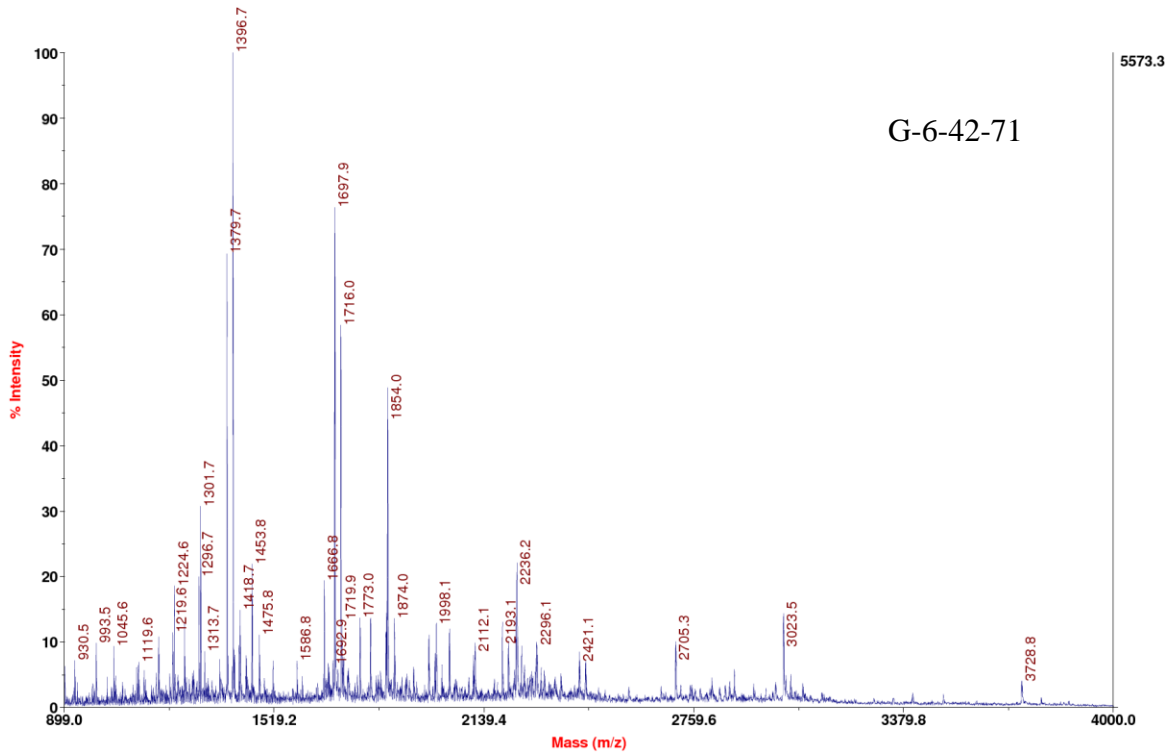


CA...IH15\_MS.t2d  
Acquired:

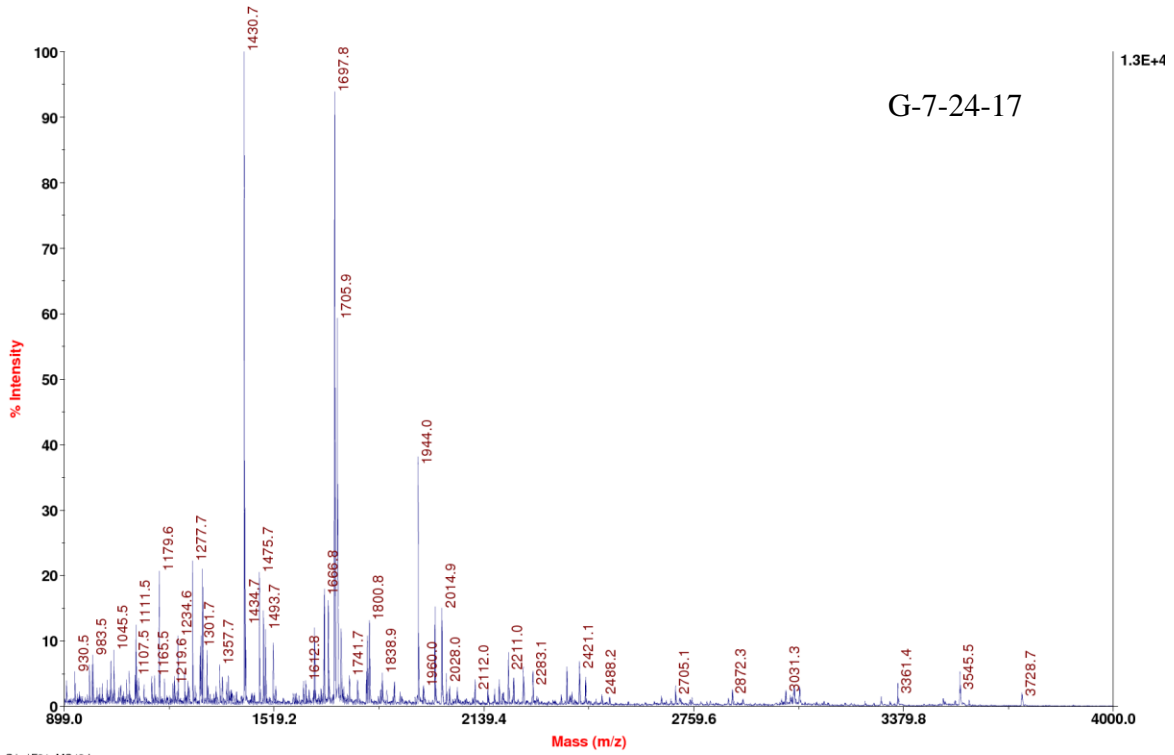
4700 Reflector Spec #1 MC[BP = 1697.9, 15063]



4700 Reflector Spec #1 MC[BP = 1396.7, 5573]

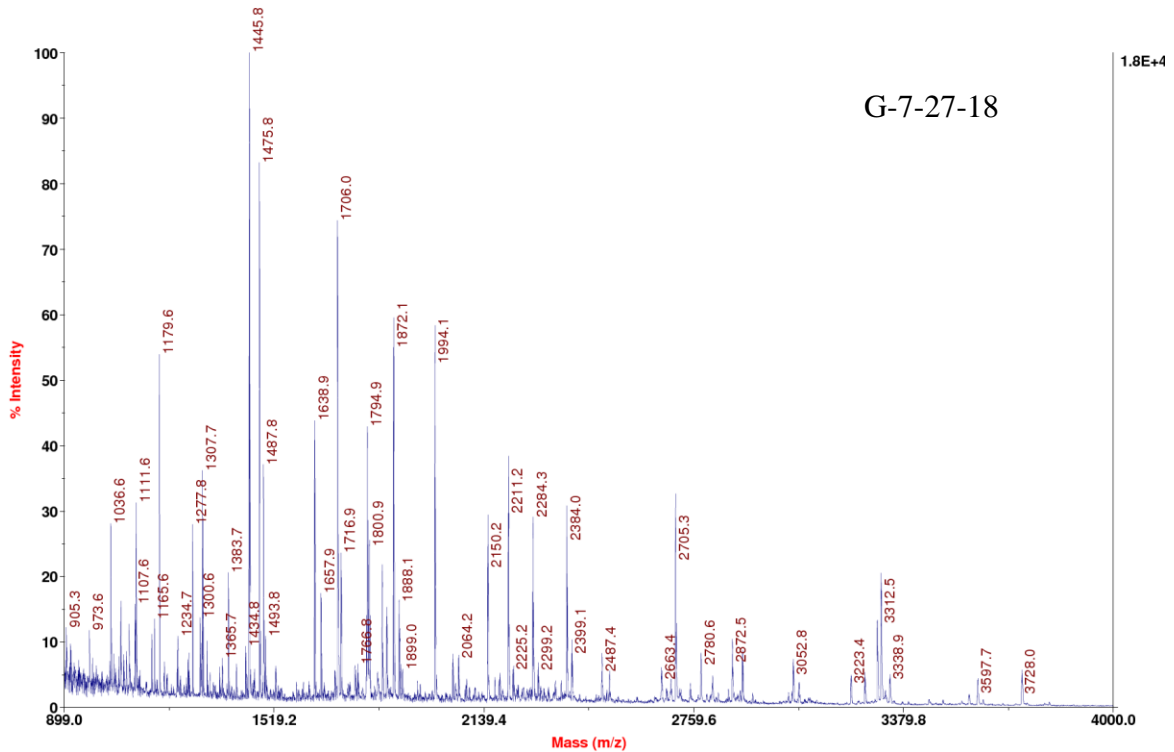


4700 Reflector Spec #1 MC[BP = 1430.7, 12853]



CA:\F21\_MS.t2d  
Acquired:

4700 Reflector Spec #1 MC[BP = 1445.8, 17641]



CA:\F21\_MS.t2d  
Acquired: