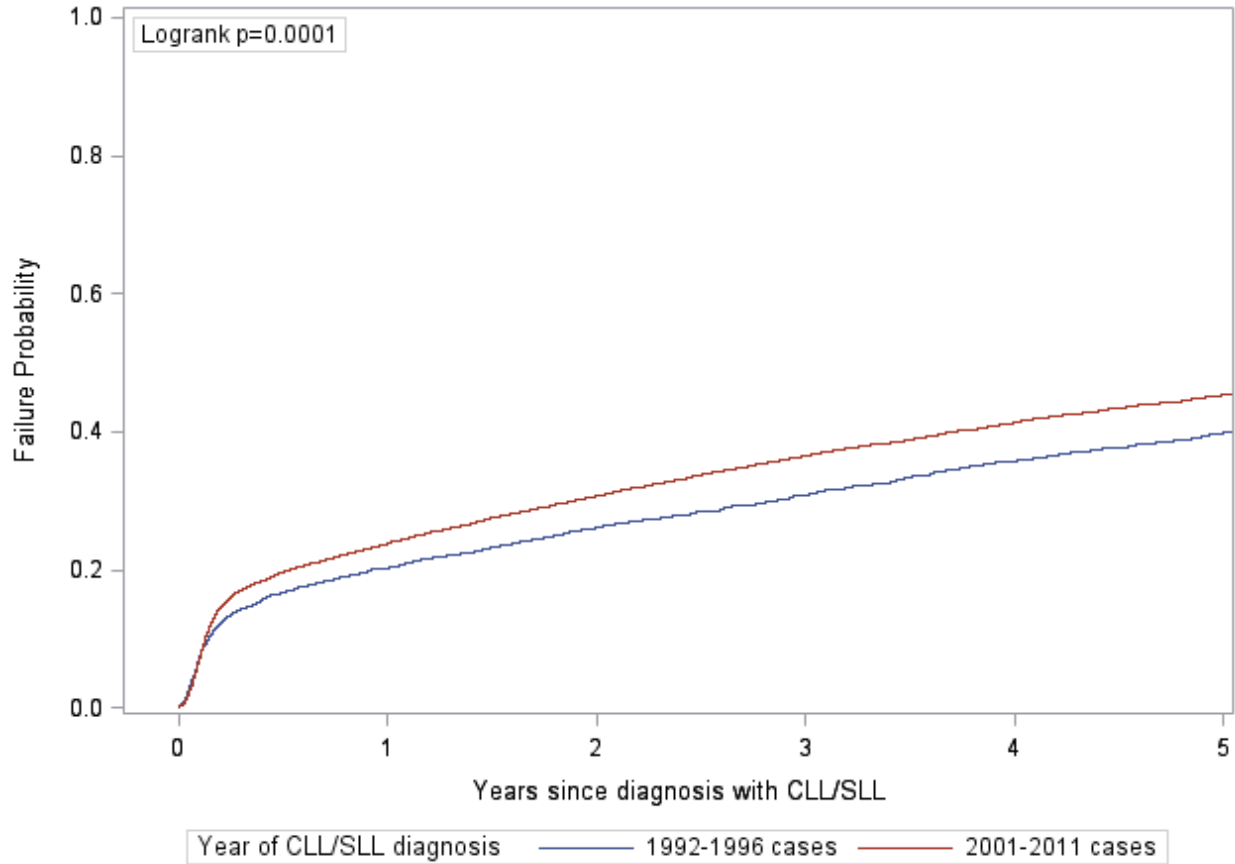


Supplemental online material for “Updating survival estimates in patients with chronic lymphocytic leukemia or small lymphocytic lymphoma (CLL/SLL) based on treatment-free interval length.”

Appendix Figure A1. Kaplan-Meier failure curves showing time to first-line treatment among patients with CLL/SLL diagnosed in 1992-1996 (pre-rituximab era) and 2001-2011 (rituximab era).



Initiation of first-line therapy was counted as an “event,” and patients were censored at five years following diagnosis, death, the end of the study period (December 2013), or end of fee-for-service Medicare enrollment.