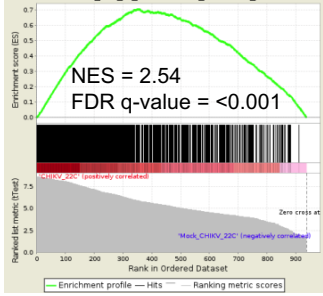


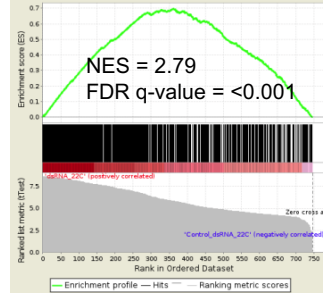
S5 Fig.

A Up-regulated DEGs from Mock vs CHIKV infection (22°C day 2)
vs
Up-regulated DEGs from Mock (22°C) vs poly(I:C)/jetPEI (22T)

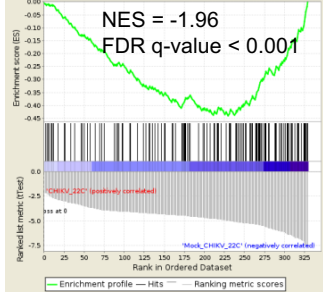


22°C
Up

Up-regulated DEGs from Mock (22C) vs poly(I:C)/jetPEI (22T)
vs
Up-regulated DEGs from Mock vs CHIKV infection (22°C day 2)

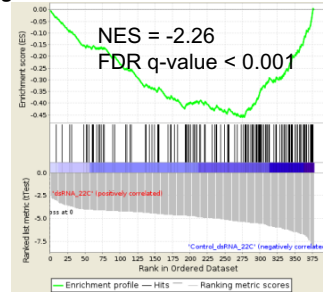


Down-regulated DEGs from Mock vs CHIKV infection (22°C day 2)
vs
Down-regulated DEGs from Mock (22C) vs poly(I:C)/jetPEI (22T)

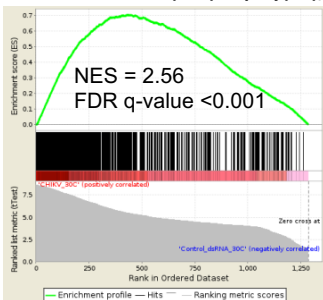


22°C
Down

Down-regulated DEGs from Mock (22C) vs poly(I:C)/jetPEI (22T)
vs
Down-regulated DEGs from Mock vs CHIKV infection (22°C day 2)

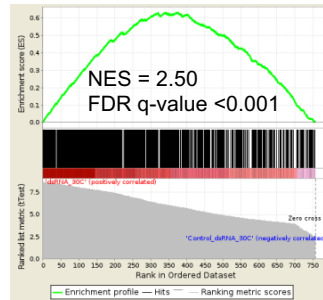


Up-regulated DEGs from Mock vs CHIKV infection (30°C day 2)
vs
Up-regulated DEGs from Mock (30C) vs poly(I:C)/jetPEI (30T)

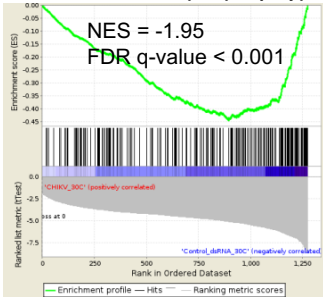


30°C
Up

Up-regulated DEGs from Mock (30C) vs poly(I:C)/jetPEI (30T)
vs
Up-regulated DEGs from Mock vs CHIKV infection (30°C day 2)

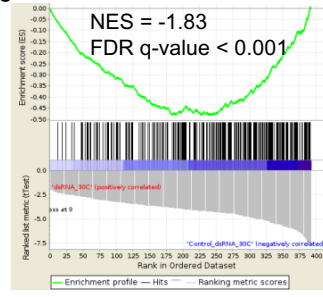


Down-regulated DEGs from Mock vs CHIKV infection (30°C day 2)
vs
Down-regulated DEGs from Mock (30C) vs poly(I:C)/jetPEI (30T)



30°C
Down

Down-regulated DEGs from Mock (30C) vs poly(I:C)/jetPEI (30T)
vs
Down-regulated DEGs from Mock vs CHIKV infection (30°C day 2)



B

