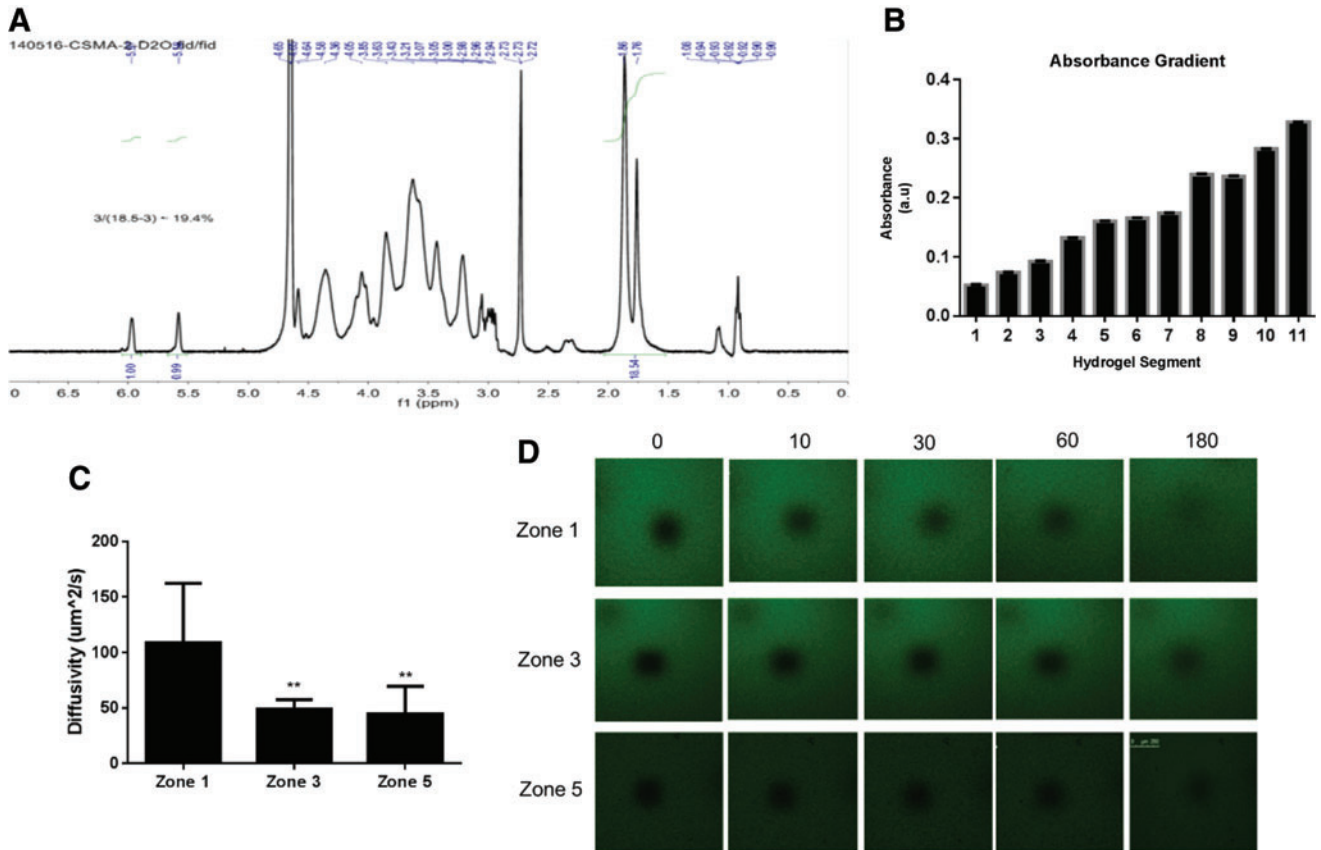


Supplementary Data



SUPPLEMENTARY FIG. S1. (A) Chondroitin sulfate methacrylation NMR data (~20%). (B) Absorbance gradient indicates the concentration gradient of polymer solution. (C, D) Diffusivity measured within selected zones of gradient hydrogel (zone 1, 3, and 5), with representative fluorescence recovery profile images (** $p < 0.01$). NMR, nuclear magnetic resonance.