

Histone Variant MacroH2A1 Plays an Isoform-Specific Role in Suppressing Epithelial-Mesenchymal Transition

**Dayle Q. Hodge, Jihong Cui, Matthew J. Gamble,
Wenjun Guo**

Supplementary Information

Supplementary Information

Figure 1D

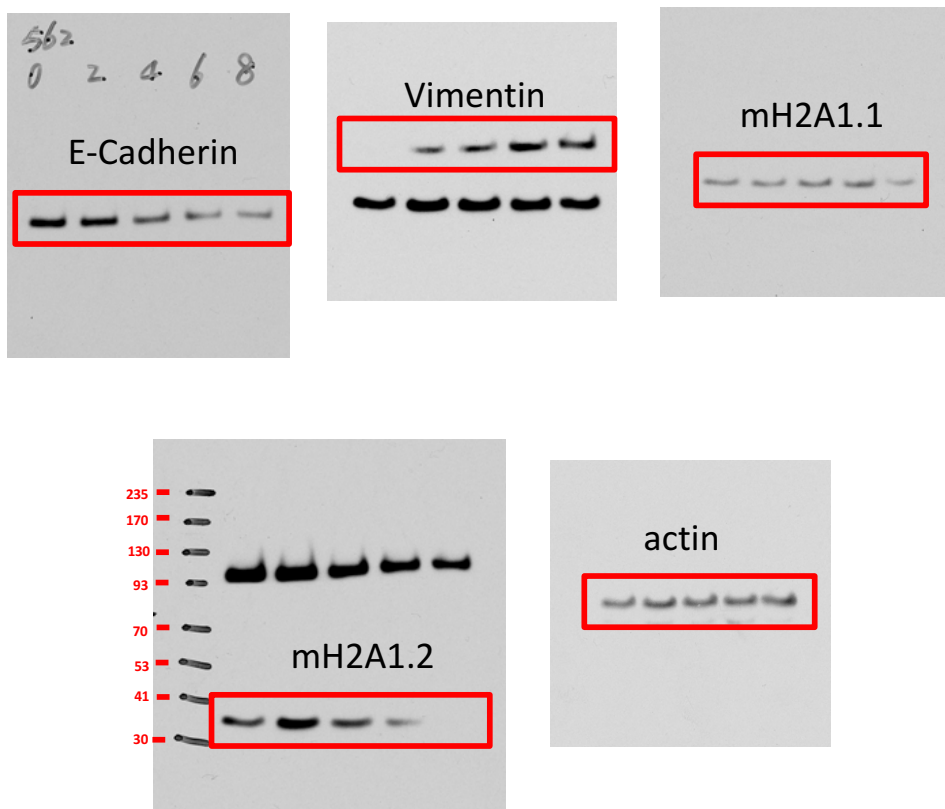


Figure 2A – Left panel (Snail-ER)

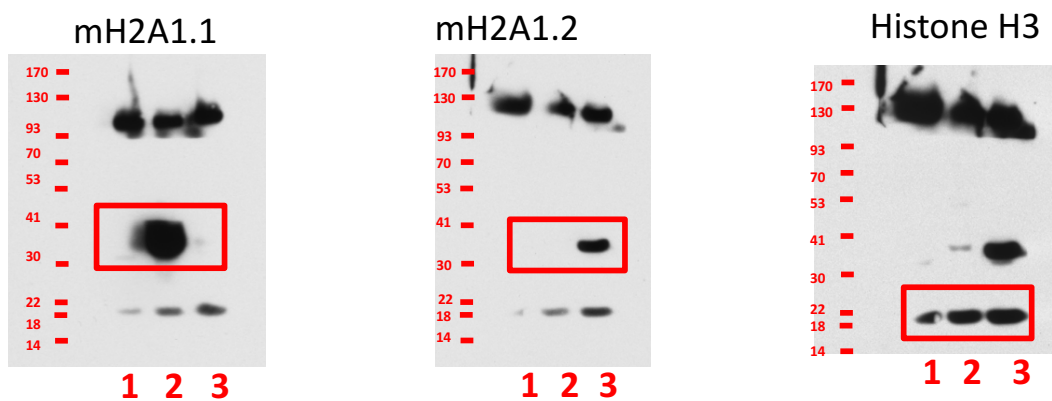


Figure S1 Western blot scanned films. Boxes highlight cropped films used in the figures.

Figure 2A – Right panel (Twist-ER)

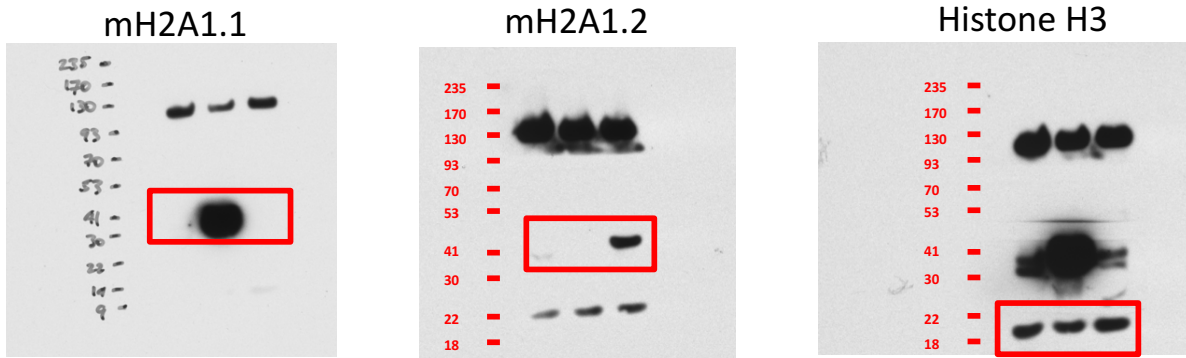


Figure 3B – Left Panel

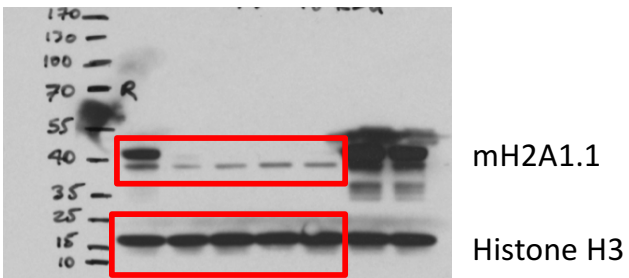


Figure 3B – Right Panel

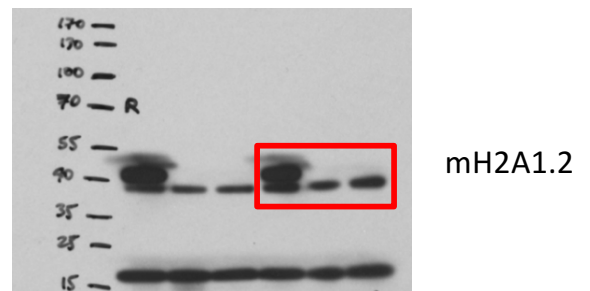
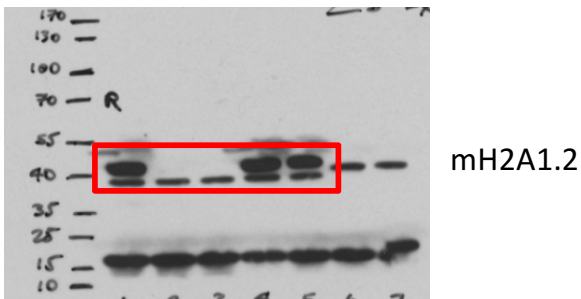
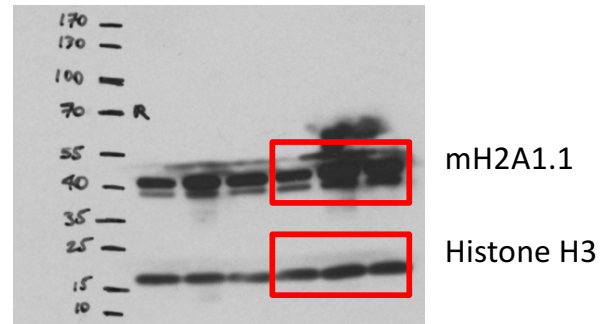


Figure S1 Continued.

Figure 4A – MDA-MB-231

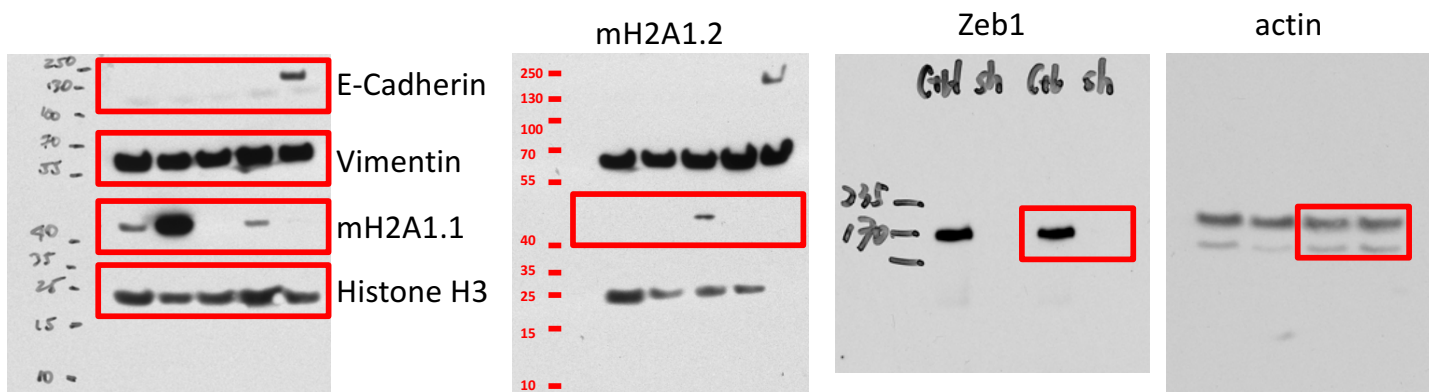


Figure 4A – Full EMT SnailER

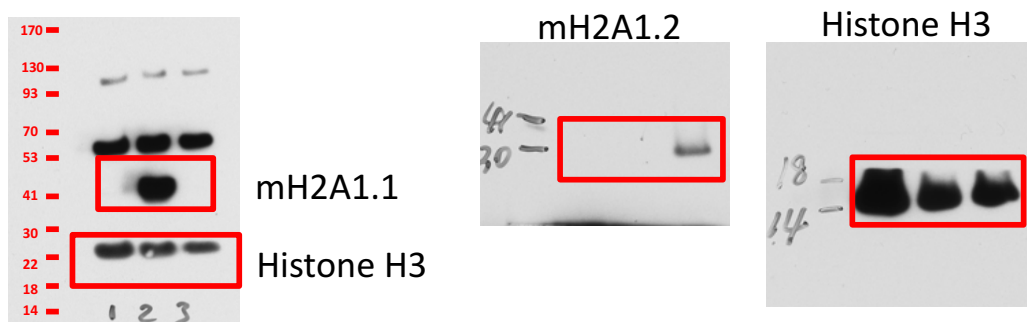


Figure 4A – Full EMT Twist-ER

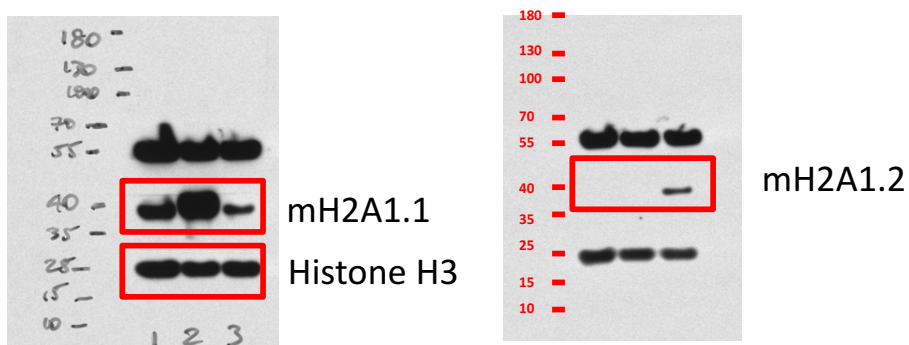


Figure 5A – Left panel

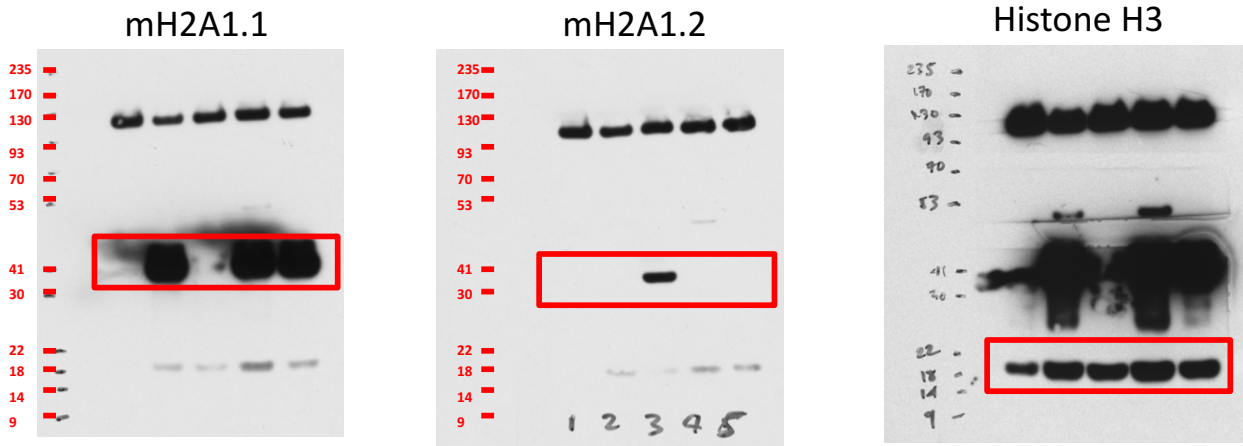


Figure 5A – Right panel

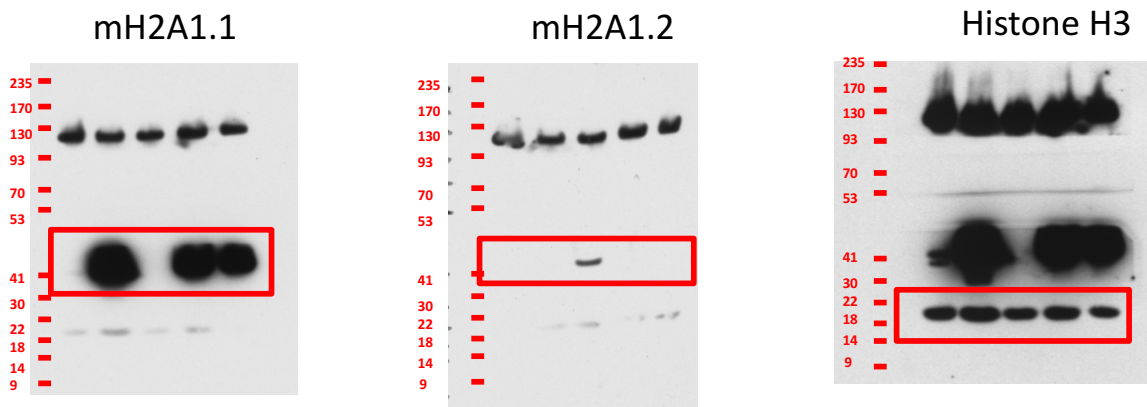


Figure S1 Continued.