

Supplementary information

Title: The suppressive role of calcium sensing receptor in endometrial cancer

Xiaoyan Xin¹ ¶, Xianqin Zeng² ¶, Dilu Feng¹, Teng Hua¹, Shuangge Liu¹, Shuqi Chi¹, Qinghua Hu^{2*}, Hongbo Wang^{1*}

1. Department of Gynecology and Obstetrics, Union Hospital, Tongji Medical College, Huazhong University of Science and Technology, No.1277, Jiefang Avenue, Jiangan District, Wuhan PR China, 430022.

2. Department of Pathophysiology, School of Basic Medicine, Tongji Medical College, Huazhong University of Science and Technology, No.13, Hangkong Road, Qiaokou District, Wuhan PR China, 430030.

¶ ¶: Xianqin Zeng and Xiaoyan Xin contributed equally to this work.

***Corresponding author:**

Professor Hongbo Wang, Department of Gynecology and Obstetrics, Union Hospital, Tongji Medical College, Huazhong University of Science and Technology, No.1277, Jiefang Avenue, Jiangan District, Wuhan PR China. Tel: +86-02785726301; Fax: +86-02785726301; E-mail: hb_wang1969@sina.com.

Professor Qinghua Hu, Department of Pathophysiology, School of Basic Medicine, Tongji Medical College, Huazhong University of Science and Technology, No.13, Hangkong Road, Qiaokou District, Wuhan PR China, 430030. E-mail: qinghuaa@mails.tjmu.edu.cn.

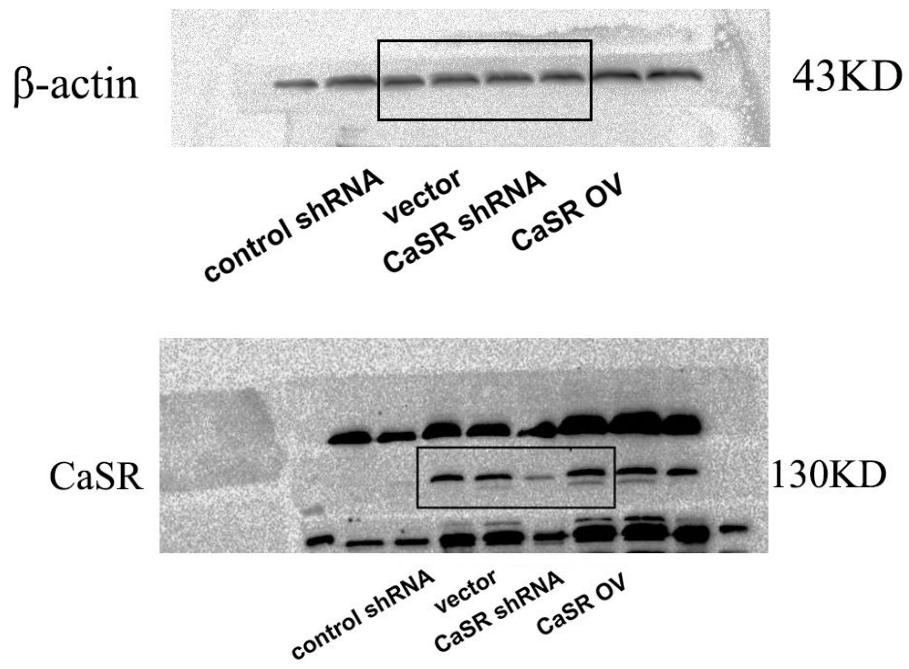
Supplemental Table S1

Table 1 Clinicopathological characteristics and CaSR expression in patients with endometrial cancer

Parameters	CaSR expression		<i>p</i> value
	(n=50)	average score	
Age			
<50	14	7.857	0.1813
≥50	36	7.672	
FIGO stage			
I/II	39	8.056	0.0774
III/IV	11	6.545	
Histologic grade			
G1	26	8.508	0.0272
G2/G3	24	6.875	
Myometrial invasion			
<1/2 of myometrium	34	8.212	0.0482
≥1/2 of myometrium	16	6.688	
LN metastasis			
Absent	44	8.073	0.0077
Present	6	5.167	

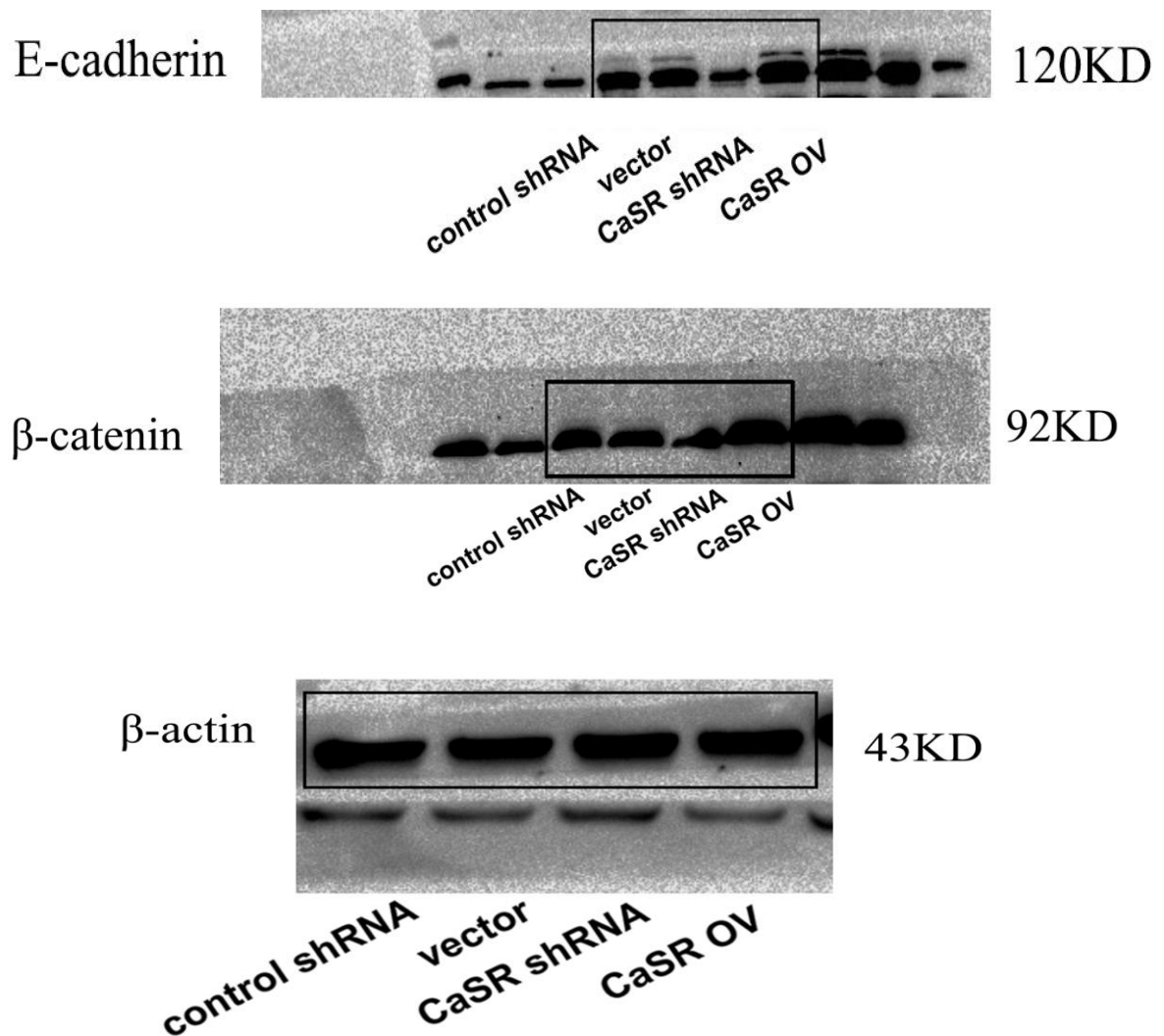
FIGO International Federation of Gynecology and Obstetrics

Supplemental Figure S1



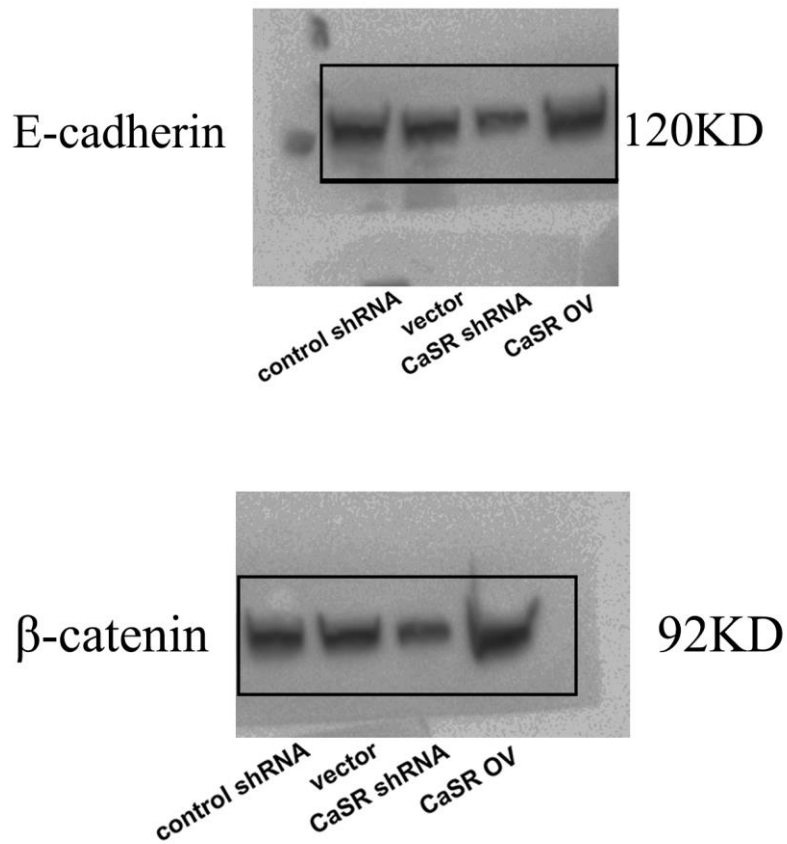
Supplementary Figure S1. Full length blots of Figure 1A. black dotted lines show the cropping locations.

Supplemental Figure S2



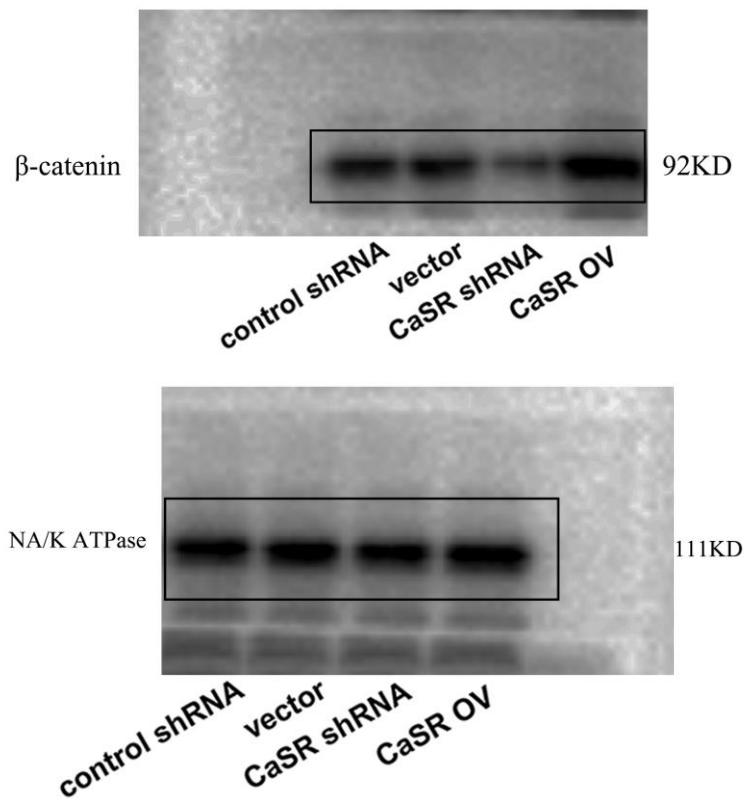
Supplementary Figure S2. Full length blots of Figure 3C. black dotted lines show the cropping locations.

Supplemental Figure S3



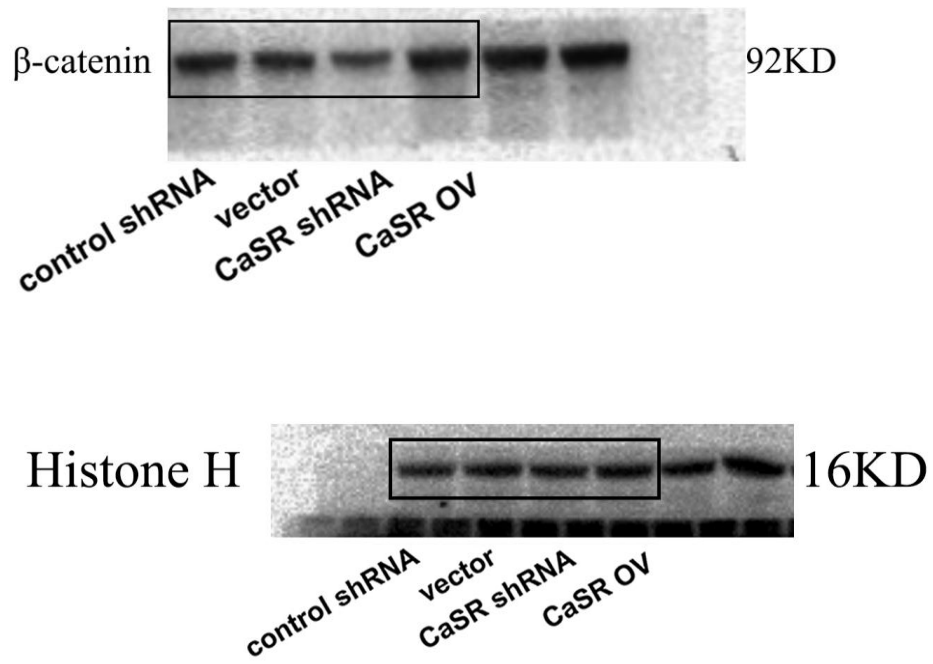
Supplementary Figure S3. Full length blots of Figure 3F. black dotted lines show the cropping locations.

Supplemental Figure S4



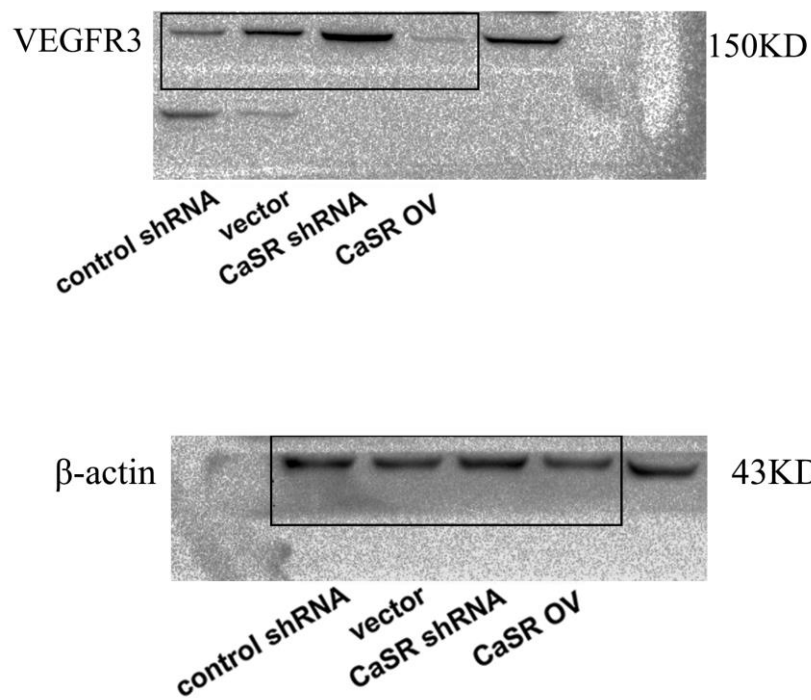
Supplementary Figure S4. Full length blots of Figure 4F. black dotted lines show the cropping locations.

Supplemental Figure S5



Supplementary Figure S5. Full length blots of Figure 4G. black dotted lines show the cropping locations.

Supplemental Figure S6



Supplementary Figure S6. Full length blots of Figure 6A. black dotted lines show the cropping locations.