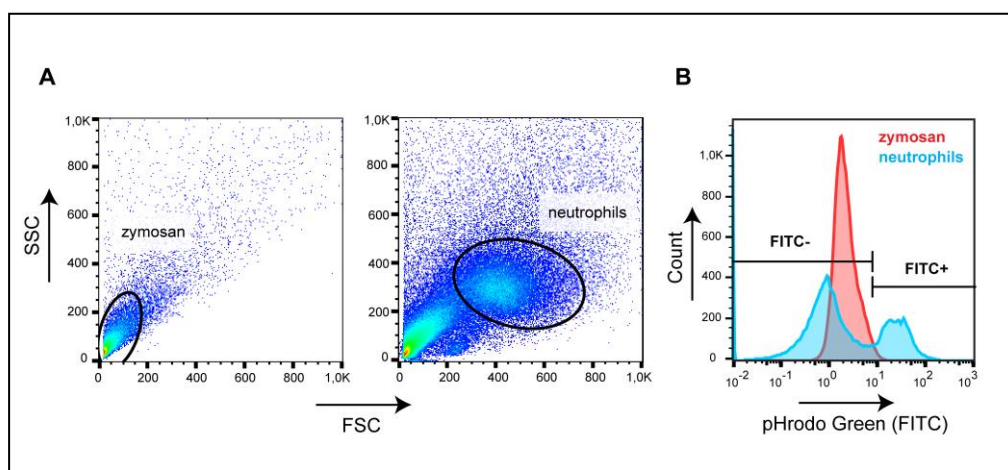


Supplemental Figure 1. Flow cytometry gating of whole mouse bone marrow. BM = bone marrow; HSC = hematopoietic stem cell; PMN prec = neutrophil precursor; PMN = neutrophil; mono precursor = monocyte precursor;



Supplemental Figure 2. Flow cytometry gating of D3KO and WT bone marrow derived neutrophils for phagocytosis. (A) Forward and side scatter (FSC & SSC) for pHRodo labeled zymosan alone or neutrophils with pHRodo zymosan. (B) Histogram for pHRodo Green. Neutrophils in FITC+ gate were considered phagocytosing.