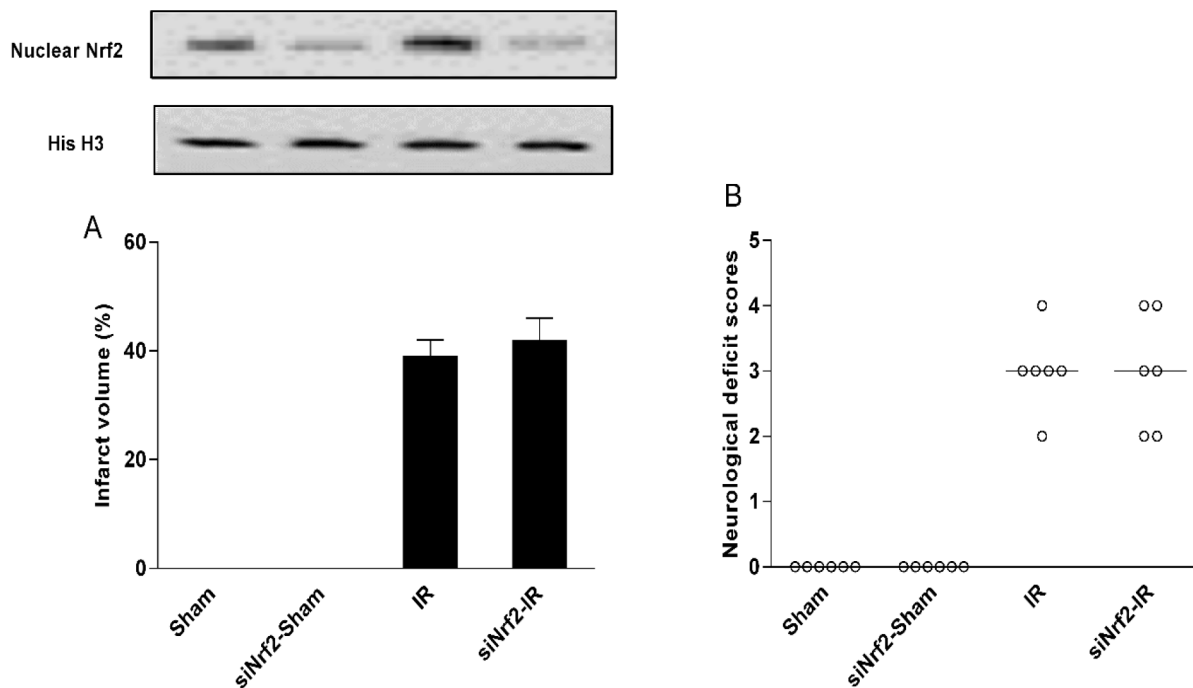
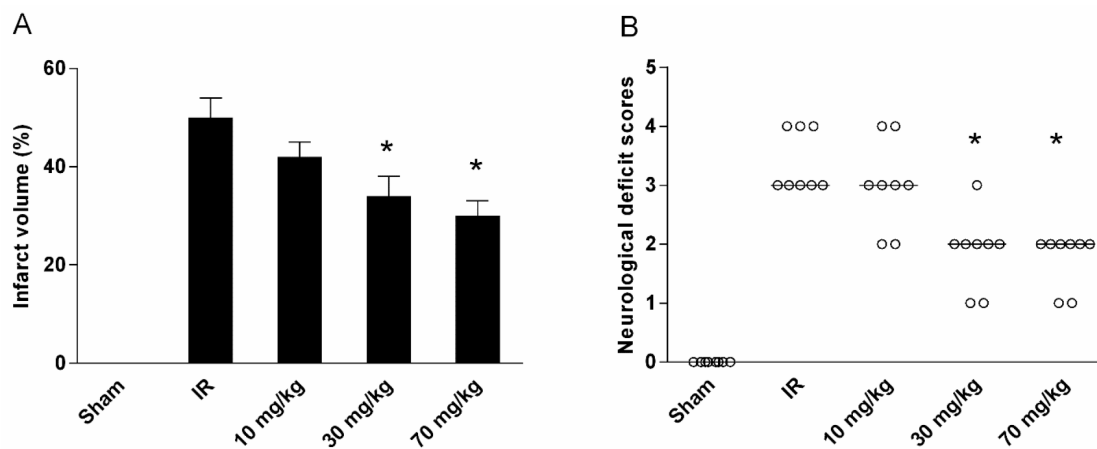


# Antioxidant and pro-angiogenic effects of corilagin in rat cerebral ischemia via Nrf2 activation

## SUPPLEMENTARY MATERIALS



**Supplementary Figure 1: Transfection of siRNA has no significant effects on brain injury and improves neurological outcome in normal and MCAO rats.** Transfection efficiency was checked by Western analysis. (A) Quantitative analysis of infarct size and Nrf2 expression. Values are mean ± SD (n=5). (B) Neurological scores of animals in different groups. Data are presented as the median (range) (n = 5).



**Supplementary Figure 2: With the treatment of CL, infarct volume (A) and neurological outcome (B) was greatly improved in a dose-dependent manner as compared with the vehicle group. \*P<0.05 CL versus vehicle treated group. (n=5 animals for each group).**

Supplementary Table 1: Physiologic parameters, mean  $\pm$  SD (n=8)

	MAP (mm Hg)	pH	PaCO <sub>2</sub> (mm Hg)	PaO <sub>2</sub> (mm Hg)	Glu (mg/dl)
Pre-ischemia					
Sham	121.3 $\pm$ 5.2	7.30 $\pm$ 0.12	40.4 $\pm$ 3.6	148.6 $\pm$ 12.2	143.3 $\pm$ 7.5
IR	120.6 $\pm$ 5.1	7.41 $\pm$ 0.17	41.6 $\pm$ 3.4	144.5 $\pm$ 13.5	133.5 $\pm$ 6.2
IR-CL	114.1 $\pm$ 6.4	7.33 $\pm$ 0.15	39.5 $\pm$ 3.7	147.5 $\pm$ 15.6	137.1 $\pm$ 8.7
Si-CL	121.6 $\pm$ 5.2	8.11 $\pm$ 0.24	42.6 $\pm$ 3.4	146.5 $\pm$ 13.5	138.5 $\pm$ 9.2
Con-CL	115.1 $\pm$ 6.1	8.33 $\pm$ 0.15	39.4 $\pm$ 3.1	141.5 $\pm$ 12.6	136.1 $\pm$ 7.2
15 min after reperfusion					
Sham	107.8 $\pm$ 6.2	7.36 $\pm$ 0.13	39.4 $\pm$ 5.1	142.1 $\pm$ 14.4	142.1 $\pm$ 10.6
IR	110.5 $\pm$ 4.3	7.38 $\pm$ 0.16	39.1 $\pm$ 4.7	134.0 $\pm$ 12.8	145.5 $\pm$ 8.9
IR-CL	106.1 $\pm$ 5.3	7.40 $\pm$ 0.05	40.2 $\pm$ 2.5	132.7 $\pm$ 15.3	141.6 $\pm$ 8.7
Si-CL	105.5 $\pm$ 4.5	7.238 $\pm$ 0.16	36.1 $\pm$ 4.1	131.0 $\pm$ 12.8	143.1 $\pm$ 8.1
Con-CL	102.1 $\pm$ 5.1	8.40 $\pm$ 0.07	38.2 $\pm$ 3.5	132.7 $\pm$ 15.3	141.6 $\pm$ 8.6
60 min after reperfusion					
Sham	107.8 $\pm$ 5.6	7.41 $\pm$ 0.29	38.2 $\pm$ 3.9	140.0 $\pm$ 16.4	142.9 $\pm$ 8.3
IR	101.3 $\pm$ 3.2	7.39 $\pm$ 0.34	37.4 $\pm$ 3.1	132.5 $\pm$ 11.2	148.6 $\pm$ 6.5
IR-CL	103.8 $\pm$ 7.6	7.41 $\pm$ 0.26	38.2 $\pm$ 3.9	130.0 $\pm$ 16.4	139.9 $\pm$ 7.1
Si-CL	103.5 $\pm$ 4.2	7.39 $\pm$ 0.14	33.4 $\pm$ 5.1	122.5 $\pm$ 11.2	147.6 $\pm$ 4.5
Con-CL	102.3 $\pm$ 4.5	7.29 $\pm$ 0.35	32.4 $\pm$ 5.1	126.5 $\pm$ 12.1	148.6 $\pm$ 6.4

MAP, Mean arterial blood pressure; PaO<sub>2</sub>, arterial oxygen tension; PaCO<sub>2</sub>, arterial carbon dioxide tension; Glu, blood glucose.