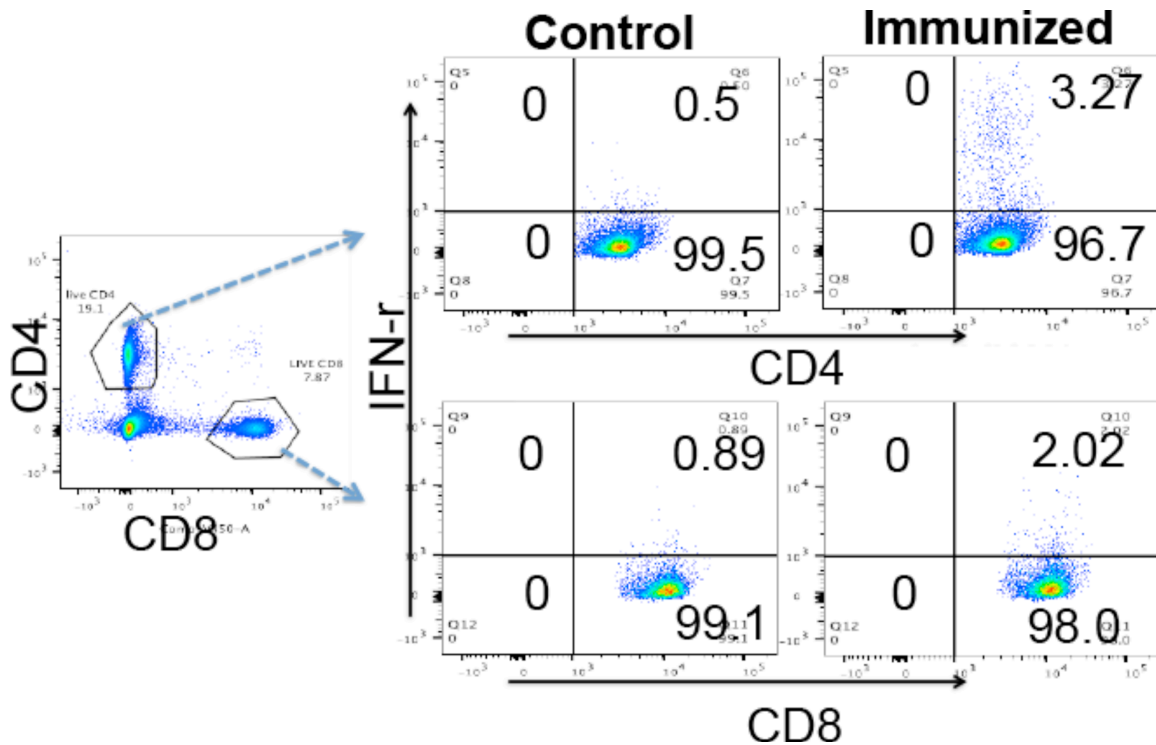


Fig. S3. Flow cytometry analysis of T lymphocyte responses by intragastric immunization with *C. muridarum*.



C57BL/6J mice intragastrically immunized with 2×10^5 IFUs of CM-mCherry or control mice were sacrificed on day 14 post-immunization to monitor T lymphocyte phenotypes using flow cytometry detection of intracellular cytokines. Representative 2-dimensional plots for identifying IFN γ -producing T cells acquired from spleens of a control C57BL/6J mouse (left panels) and immunized mouse (right) respectively were shown. The splenocytes were first gated for live CD4⁺ or CD8⁺ T cells. Then, the CD4⁺ or CD8⁺ T cells were gated for expressing cytokines such as IFN γ using an intracellular cytokine detection protocol as described in the Materials and Methods section.