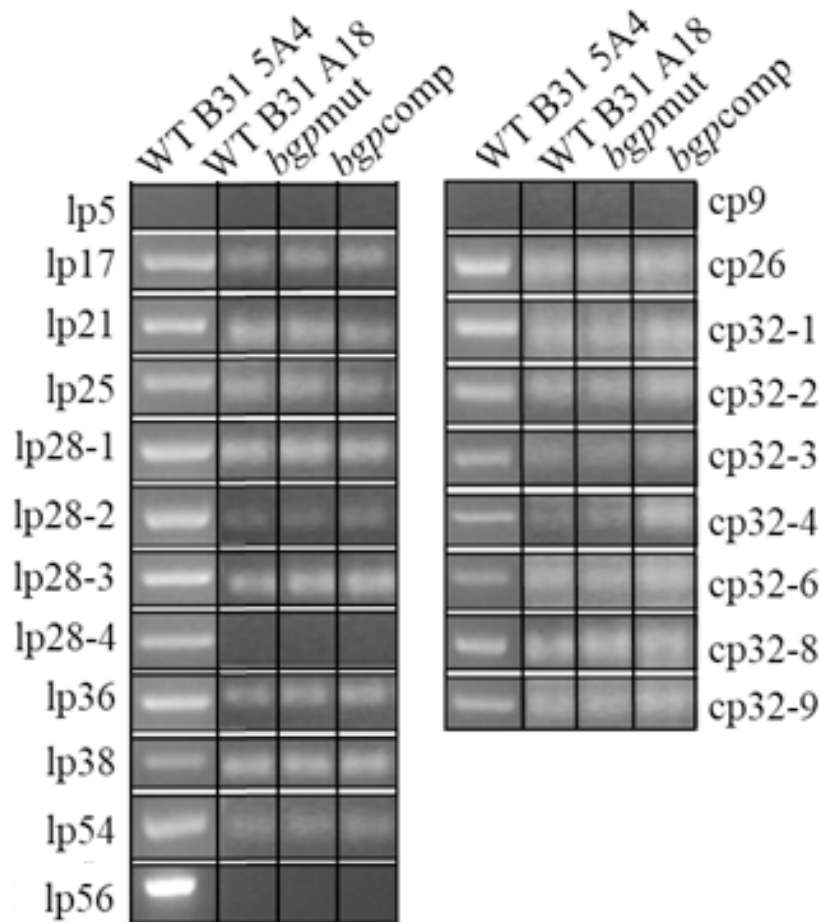


Supplementary Materials

Supplementary Table 1. Plasmid profile of *B. burgdorferi* strains examined

Plasmid	B31 5A4	B31 5A18	<i>bgpmut</i>	<i>bgpcomp</i>
lp5	–	–	–	–
lp17	+	+	+	+
lp21	+	+	+	+
lp25	+	+	+	+
lp28-1	+	+	+	+
lp28-2	+	+	+	+
lp28-3	+	+	+	+
lp28-4	+	–	–	–
lp36	+	+	+	+
lp38	+	+	+	+
lp54	+	+	+	+
lp56	+	–	–	–
cp9	–	–	–	–
cp26	+	+	+	+
cp32-1	+	+	+	+
cp32-2	+	+	+	+
cp32-3	+	+	+	+
cp32-4	+	+	+	+
cp32-6	+	+	+	+
cp32-8	+	+	+	+
cp32-9	+	+	+	+



Supplementary Figure S1. Plasmid profile of B31 *B. burgdorferi* WT, *bgpmut* and *bgpcomp* strains. Plasmid composition of each strain was determined by PCR using genomic DNA isolated from each strain. Primers used were specific for different plasmid borne genes on the linear and circular plasmids. The *bgpmut* and *bgpcomp* strains lacked cp9, lp5, lp28-4, and lp56, consistent with the B31 5A18 wild type strain. In comparison, B31 5A4 lacked lp5, and retained lp56 and lp28-4. Please also see relevant reference (1-3).

References

1. **Purser JE, Norris SJ.** 2000. Correlation between plasmid content and infectivity in *Borrelia burgdorferi*. Proc Natl Acad Sci USA **97**:13865-13870.
2. **Labandeira-Rey M, Skare JT.** 2001. Decreased infectivity in *Borrelia burgdorferi* strain B31 is associated with loss of linear plasmid 25 or 28-1. Infect Immun **69**:446-455.
3. **Lin T, Gao L, Zhang C, Odeh E, Jacobs MB, Coutte L, Chaconas G, Philipp MT, Norris SJ.** 2012. Analysis of an ordered, comprehensive STM mutant library in infectious *Borrelia burgdorferi*: insights into the genes required for mouse infectivity. PloS one **7**:e47532.