

Supplementary information

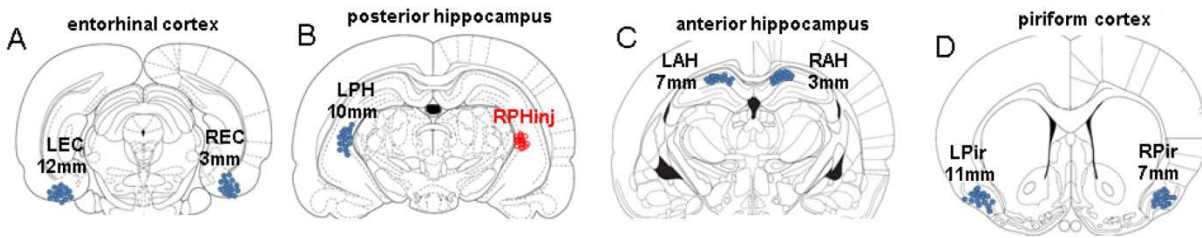
Title: Seizure development in the acute intrahippocampal epileptic focus

Authors: Lin Li¹, Kseniia Kriukova^{1,5}, Jerome Engel Jr^{1,2,3,4*}, Anatol Bragin^{1,4*},

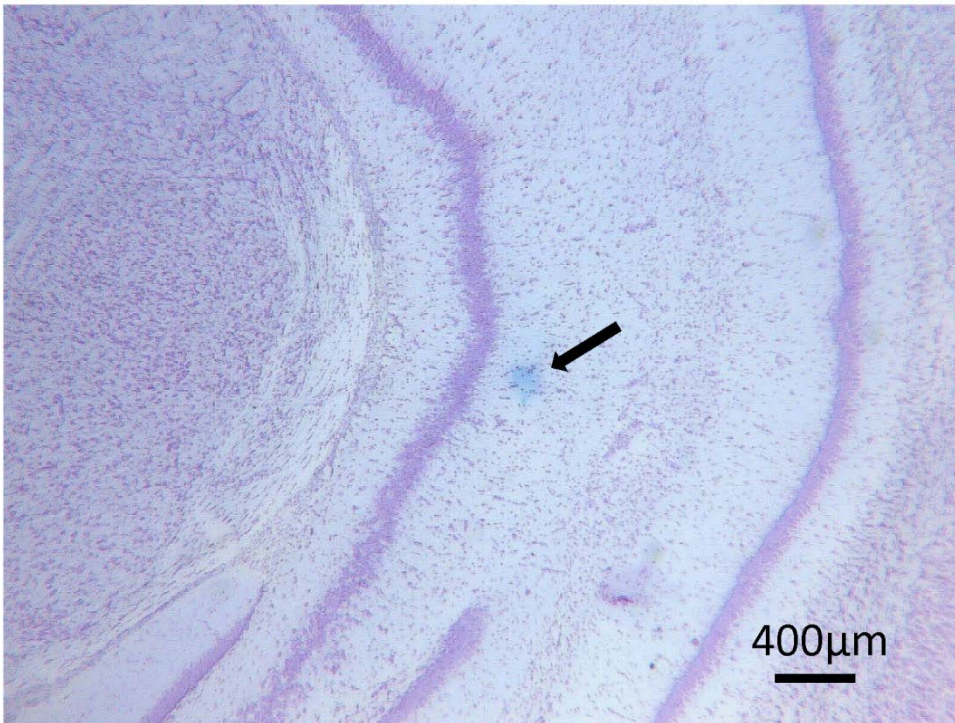
Affiliations: ¹Department of Neurology, ²Department of Neurobiology, ³Department of Psychiatry and Biobehavioral Sciences, ⁴Brain Research Institute, David Geffen School of Medicine at University of California Los Angeles, 710 Westwood Plaza, Los Angeles, CA, USA, 90095; ⁵I.M. Sechenov First Moscow State Medical University, Moscow, Russia

Corresponding author:

Anatol Bragin, email: abragin@mednet.ucla.edu. Department of Neurology, David Geffen School of Medicine at University of California Los Angeles, 710 Westwood Plaza, Los Angeles, CA, USA, 90095 (phone:818-414-4096),



Supplement Figure 1. Distribution of electrode location based on histological evaluation of 17 rats. A, entorhinal cortex; B, posterior hippocampus, red dots are location of kainic acid injections; C, anterior hippocampus; D, piriform cortex. Letters inside each section indicate abbreviation of each recording site and numbers indicate physical distance from the pint of kainic acid injection.



Supplement Figure 2. An example on methylene blue injection (black arrow) in the rat posterior hippocampus.