

Innate immune alterations are elicited in microglial cells before plaque deposition in the Alzheimer's disease mouse model 5xFAD

Antonio Boza-Serrano*¹, Yiyi Yang*¹, Agnes Paulus¹ and Tomas Deierborg¹

Experimental Neuroinflammation Laboratory, Department of Experimental Medical Science, Lund University, Lund, Sweden.

Sölvegatan 19, BMC B11, 221 84 Lund, Sweden

Corresponding author: Antonio Boza-Serrano; antonio.boza_serrano@med.lu.se

Tomas Deierborg; tomas.deierborg@med.lu.se

*Equal contribution to the paper

Keywords: inflammation, brain, Alzheimer's disease, innate immune system and microglia.

Supplementary Figure 1

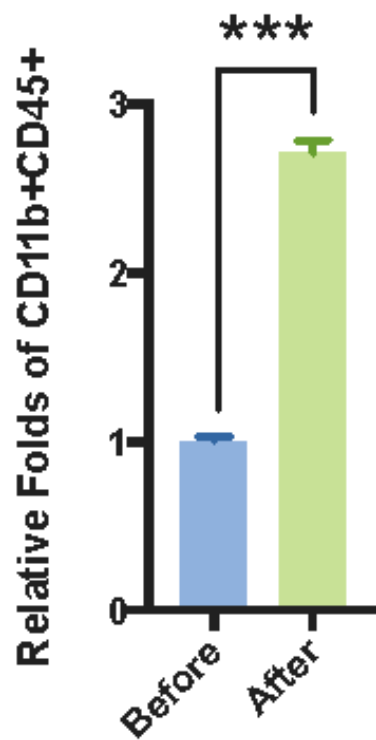
Enrichment of microglia after CD11b microbeads isolation

A) Bars show a relative comparison of microglia that were CD11b⁺ and CD45⁺ before and after CD11b microbeads isolation. There is a significant enrichment of microglia population after the isolation compared to before (Paired t-test, n = 4, P < 0.05, error bars with mean ± SEM).

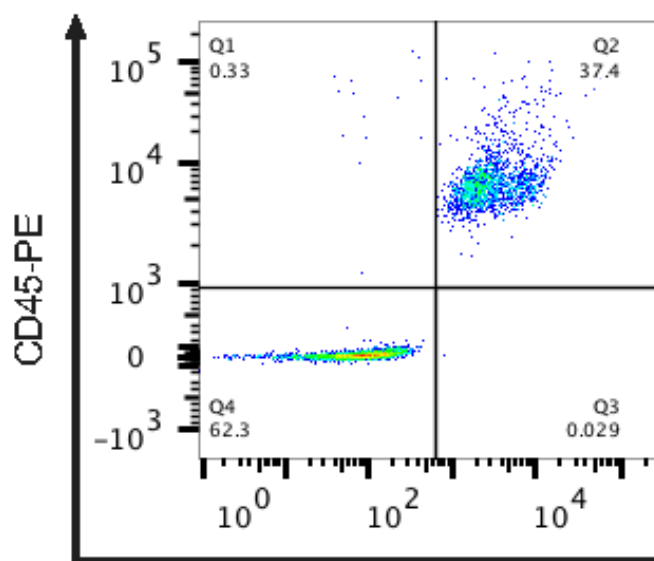
(B-C) Representative contour plots of CD11b microbeads isolated cells stained with anti-CD11b-APC and anti-CD45-PE antibodies. Microglia were identified by double

positive for CD11b and CD45 staining. Only single and live cells were taken into consideration for the gating.

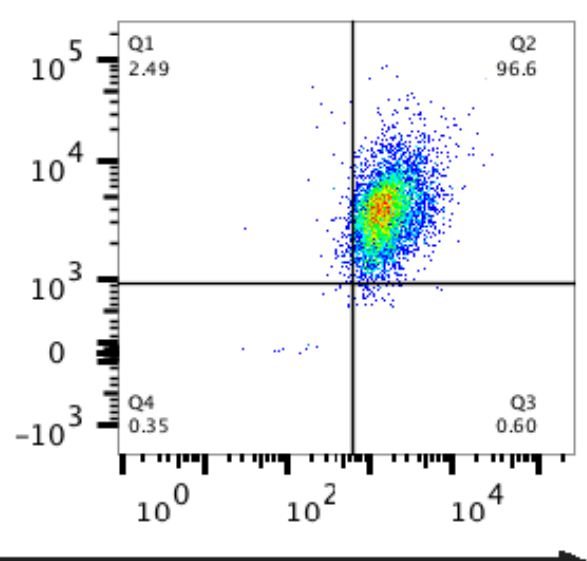
A Microglial Enrichment



B Before Isolation



C After Isolation



CD11b-APC