

## **Mitochondrial biogenesis and metabolic hyperactivation limits the application of MTT assay in the estimation of radiation induced growth inhibition**

Yogesh Rai<sup>1</sup>, Richa Pathak<sup>1</sup>, Neeraj Kumari<sup>1</sup>, Dhananjay Kumar Sah<sup>1</sup>, Sanjay Pandey<sup>1</sup>, Namita Kalra<sup>1</sup>, Ravi Soni<sup>1</sup>, B S Dwarakanath<sup>2</sup> and Anant Narayan Bhatt<sup>1</sup>

Correspondence:

Anant Narayan Bhatt

Institute of Nuclear Medicine and Allied Sciences

Brig S K Mazumdar Road

Delhi 110 054

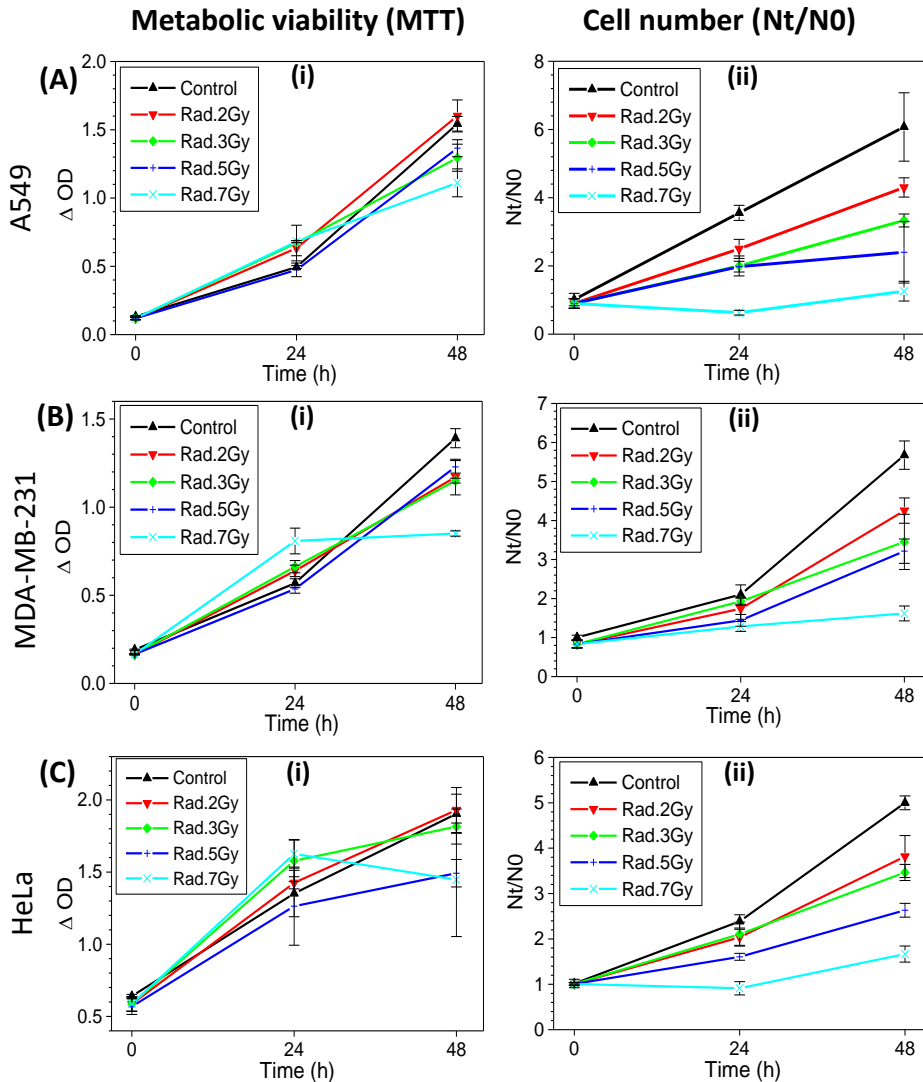
INDIA

Telephone: (+91) 11 2390-5138

Fax: (+91) 11 2391-9509

E-mail: [anant@inmas.drdo.in](mailto:anant@inmas.drdo.in), [anbhatt@yahoo.com](mailto:anbhatt@yahoo.com)

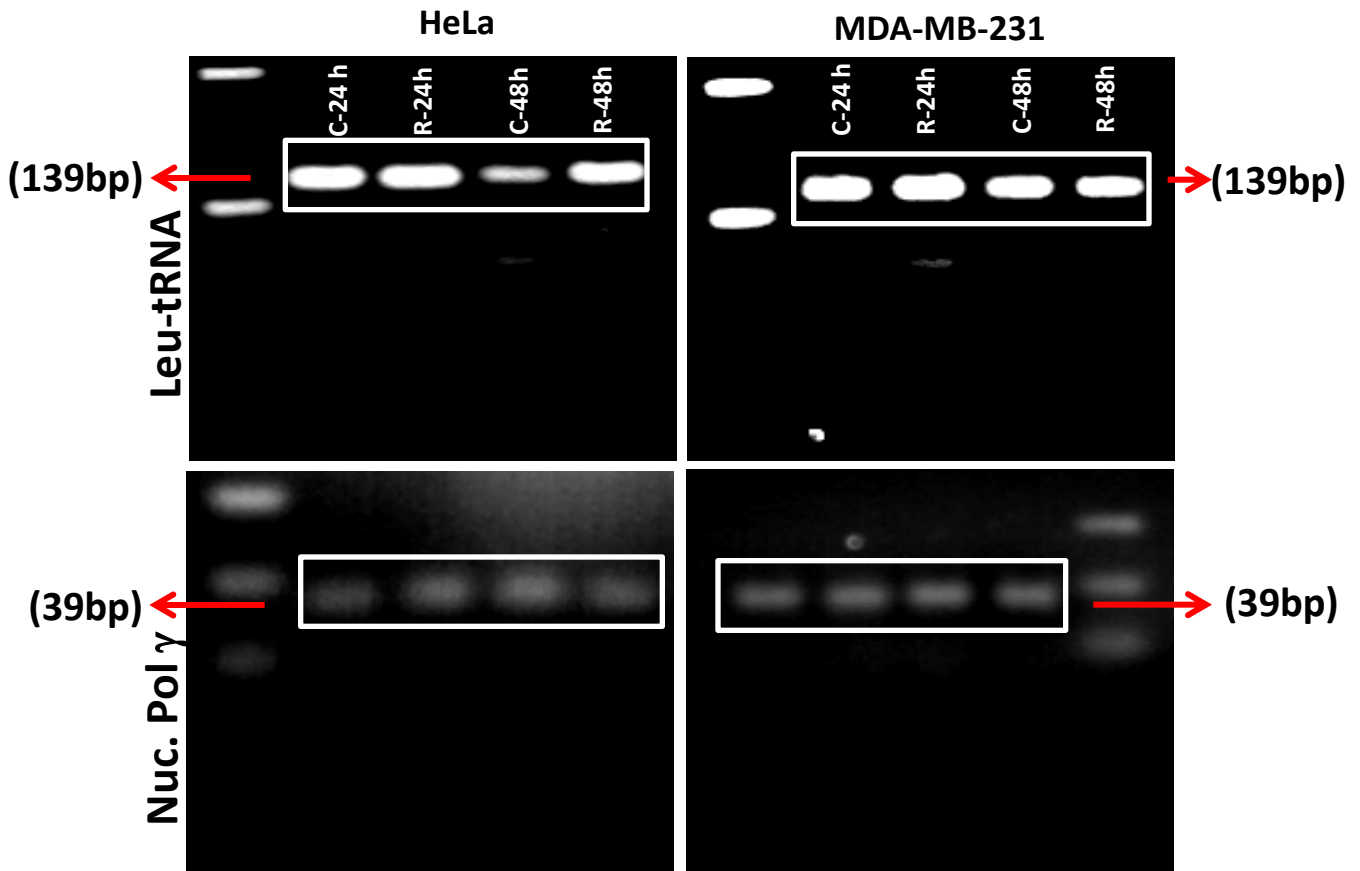
## Supplementary figure 1



### Radiation dose dependent analysis of metabolic viability (MTT) and cell number:

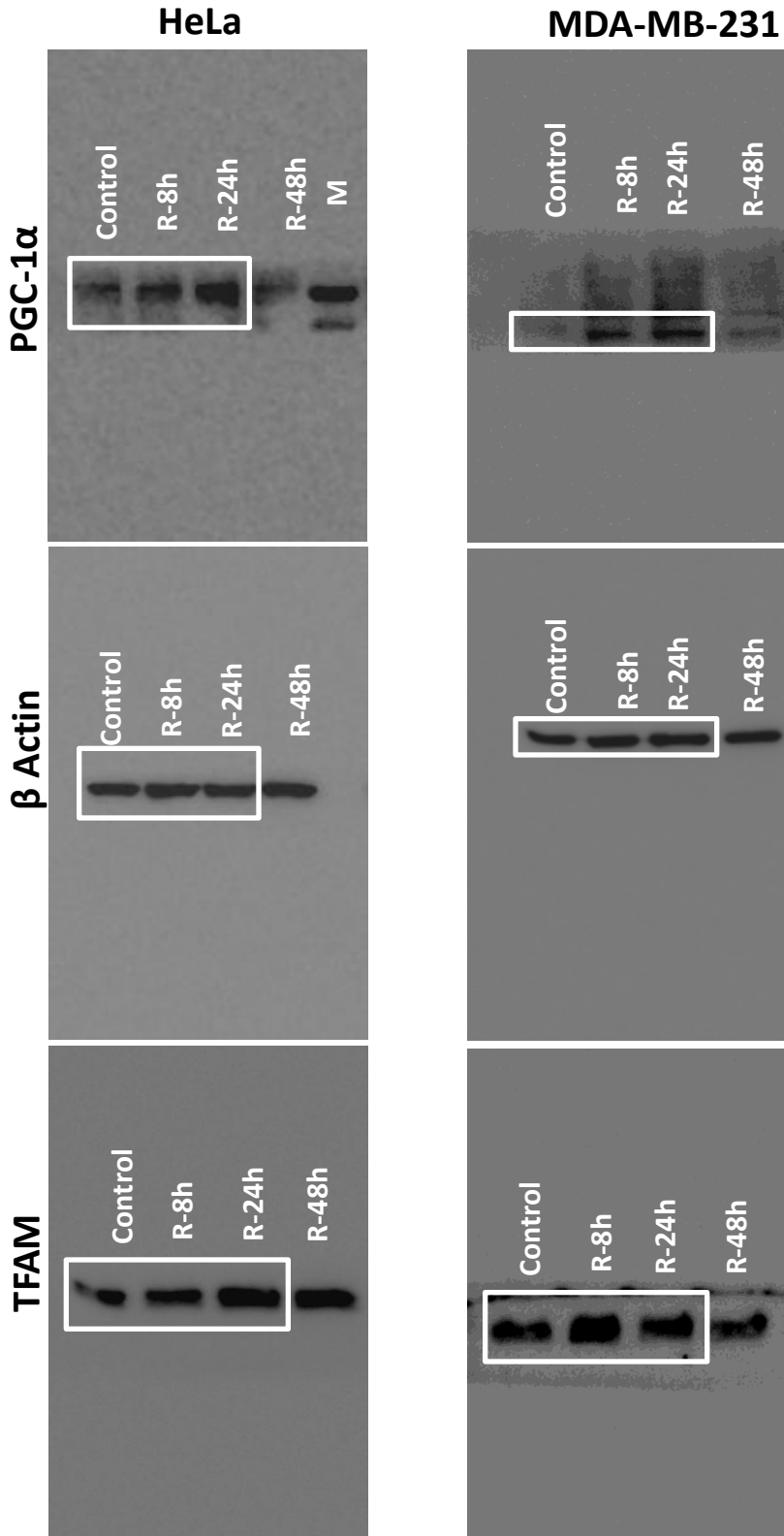
Metabolic viability does not correlate with viable cell number in radiation induced growth inhibition: Radiation dose response measured by MTT assay in A549 (A i), MDA-MB-231(B i) and HeLa (C i) cells and compared with cell number in same cell lines A549 (A ii), MDAMB-231(B ii) and HeLa (C ii), under similar experimental conditions at various radiation dose. Data are presented as mean  $\pm$  SD from four independent experiments. \* $p < 0.05$  vs. respective control cells.

## Supplementary figure 2

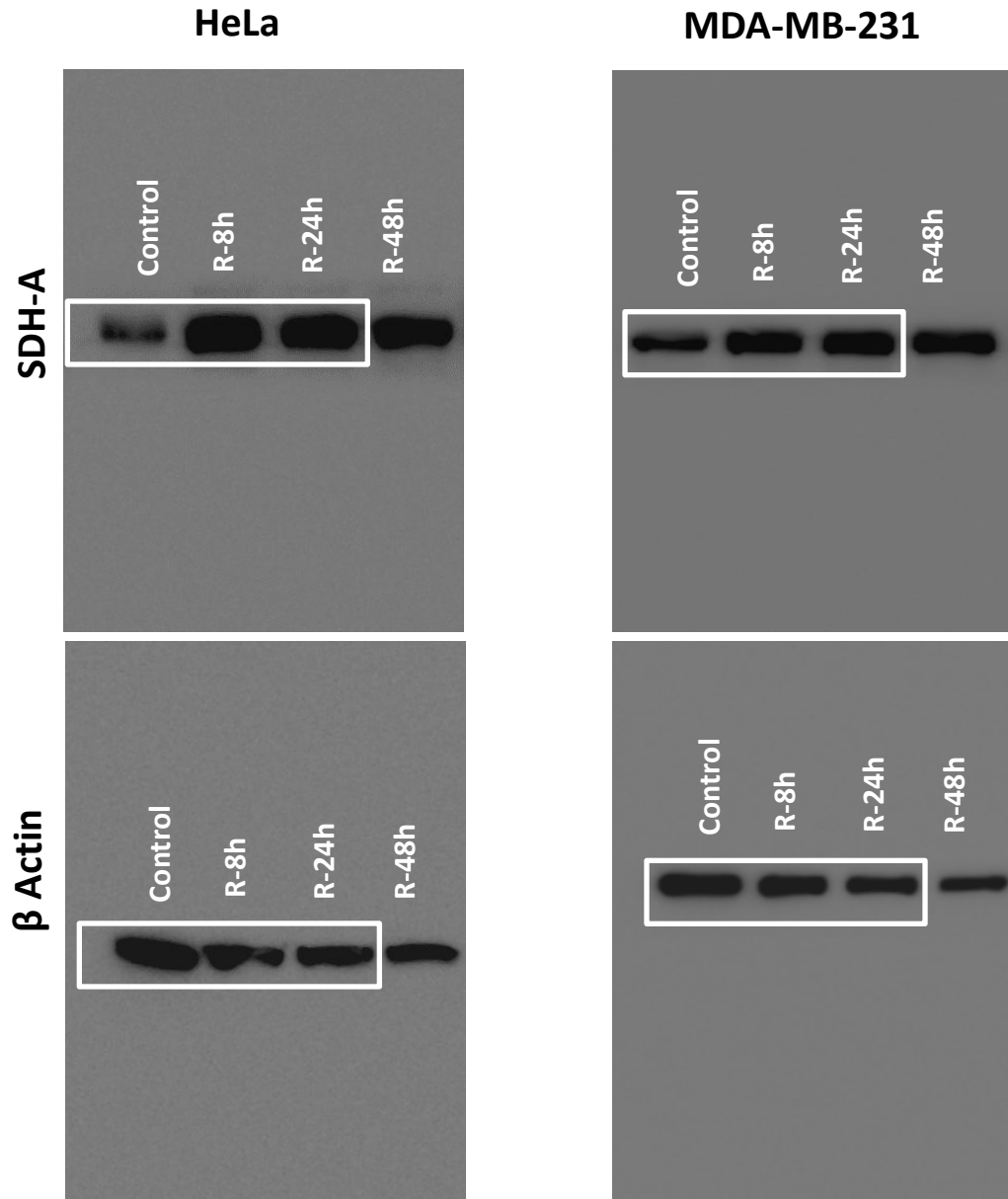


**Figure 3 (B) is cropped and taken from these original images of the supplementary figure 1: Full length DNA gel blot images are presented here for Leu-tRNA (139 bp) and Nuclear pol  $\gamma$  (39 bp) in HeLa and MDAMB-231 cells at 24 and 48 hours post irradiation with respective control.**

### Supplementary figure 3



Supplementary figure 3 continue:



**Figure 3 (C) is cropped and taken from these original images of the supplementary figure 3:**  
Full length western blot images are presented here for PGC-1 $\alpha$ , TFAM, SDH and its respective  $\beta$  Actin in HeLa and MDAMB-231 cells. Cropped images marked at 8, 24 and 48 hours with respective control and analyzed by densitometry.