

Figure S2

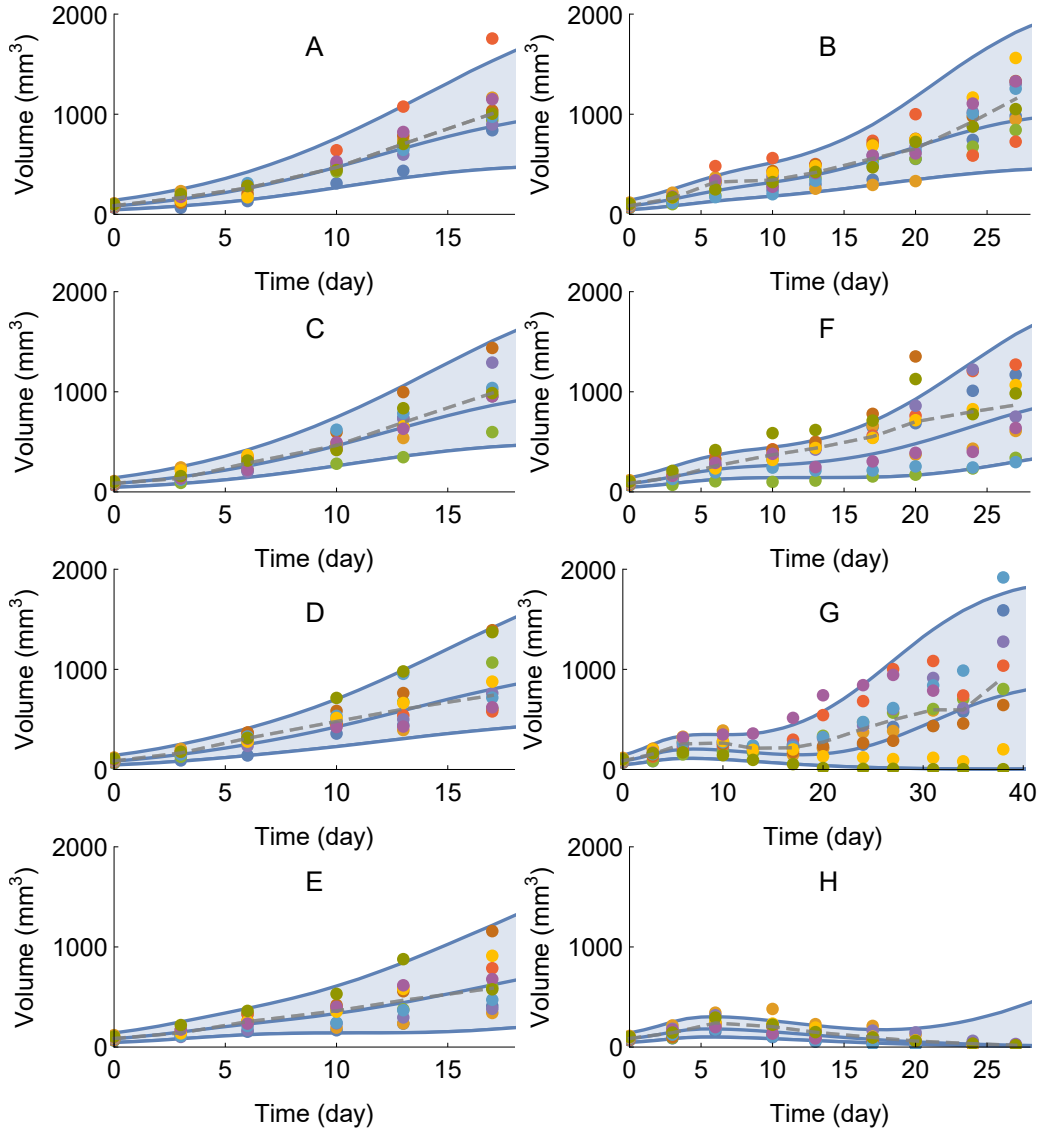


Figure S2: Visual predictive checks for each of the eight treatment groups: (A) vehicle, (B) radiation therapy (2 Gy per dose), (C-E) RS1 monotherapy (10, 50, or 200 mg/kg per dose), and (F-H) combination therapy with radiation (2 Gy per dose) and RS1 (10, 50, or 200 mg/kg per dose). Blue curves indicate simulated 5<sup>th</sup>, 50<sup>th</sup>, and 95<sup>th</sup> percentiles from the tumor model (Eq. 6,7) using parameter estimates from Table 1 and Table S1. Colored dots represent experimental observations. Two outlier data points (24,2188) and (27,3177) are not shown in plot (F)