

Figure S2. SNP index and Δ (SNP index) plots of rice chromosomes generated by MutMapPlus analysis of *age1*.

SNP index and Δ (SNP index) plots were generated by MutMapPlus analysis of bulked F2 mutant progeny obtained by a crossing between *age1* and Nipponbare. (a) SNP index of the mutant (M) bulk. (b) SNP index of the wild-type (WT) bulk. (c) Δ (SNP index) calculated by subtraction of the index of WT bulk from that of M bulk. Red lines indicate average value of SNP index or Δ (SNP index) obtained by the sliding window analysis of 4 Mb intervals with 50 kb increment. Candidate region confined by the Fisher's *P* value of <0.05 is indicated with a red box.

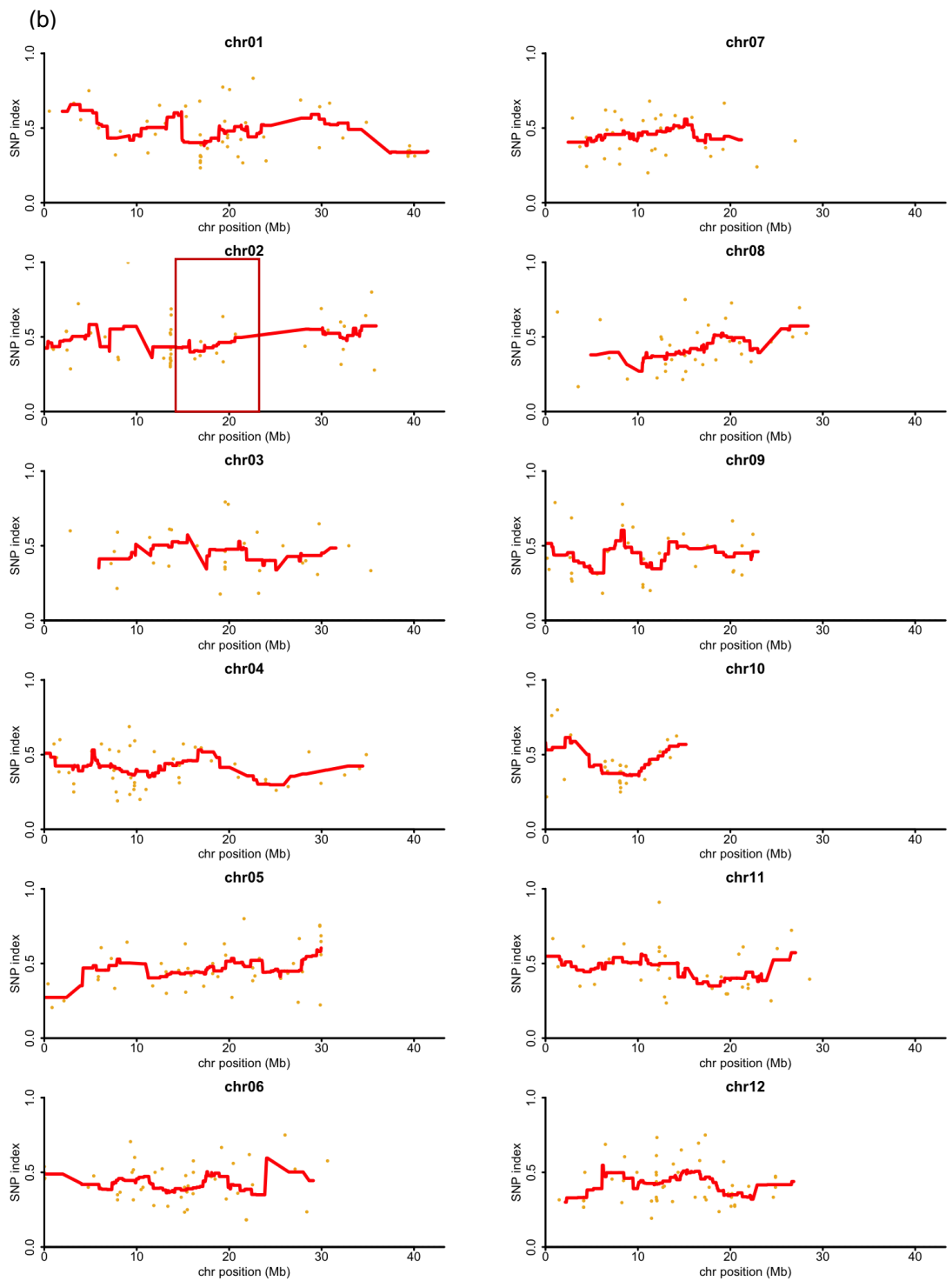


Figure S2. (Continued)

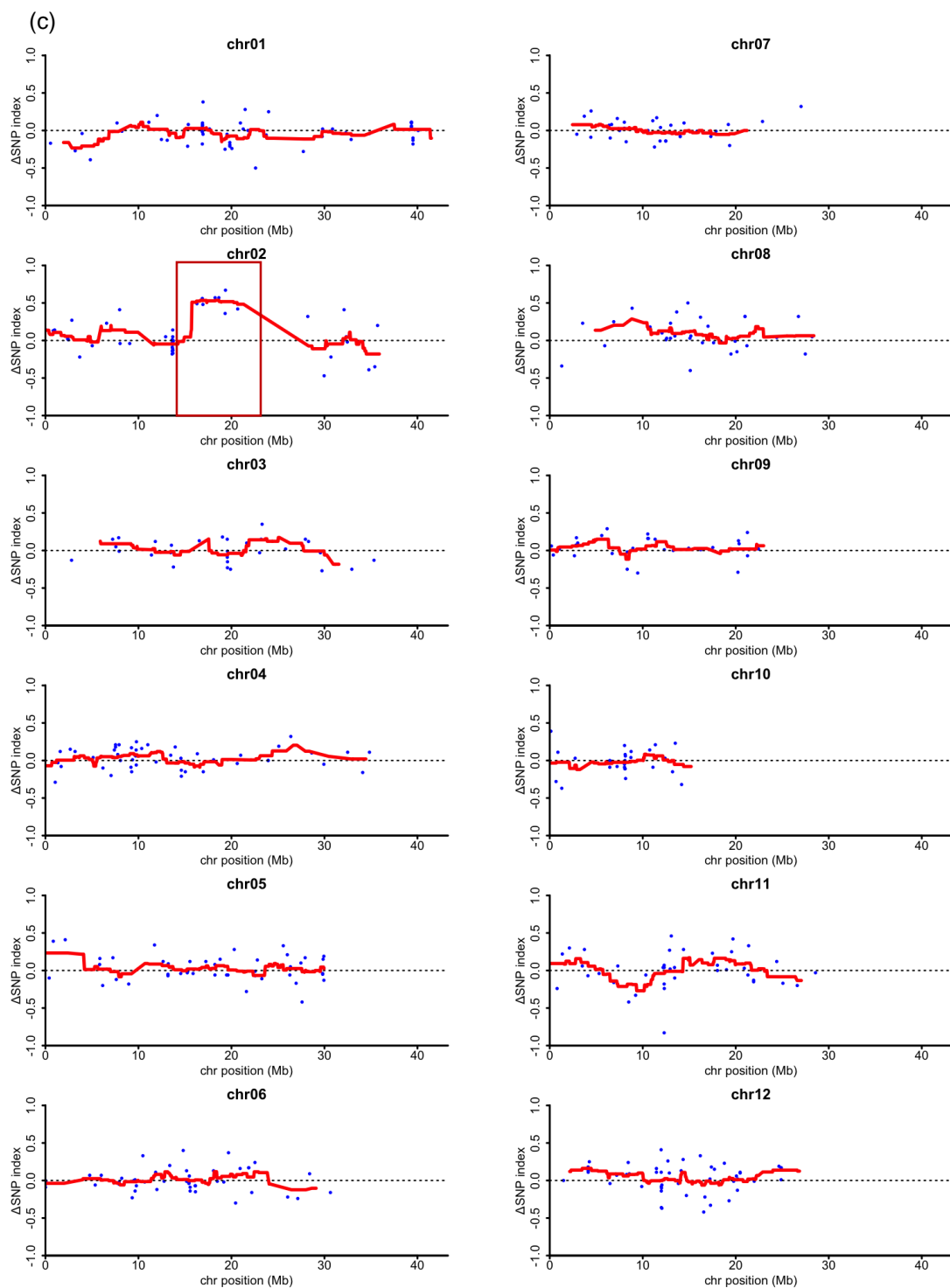


Figure S2. (Continued)