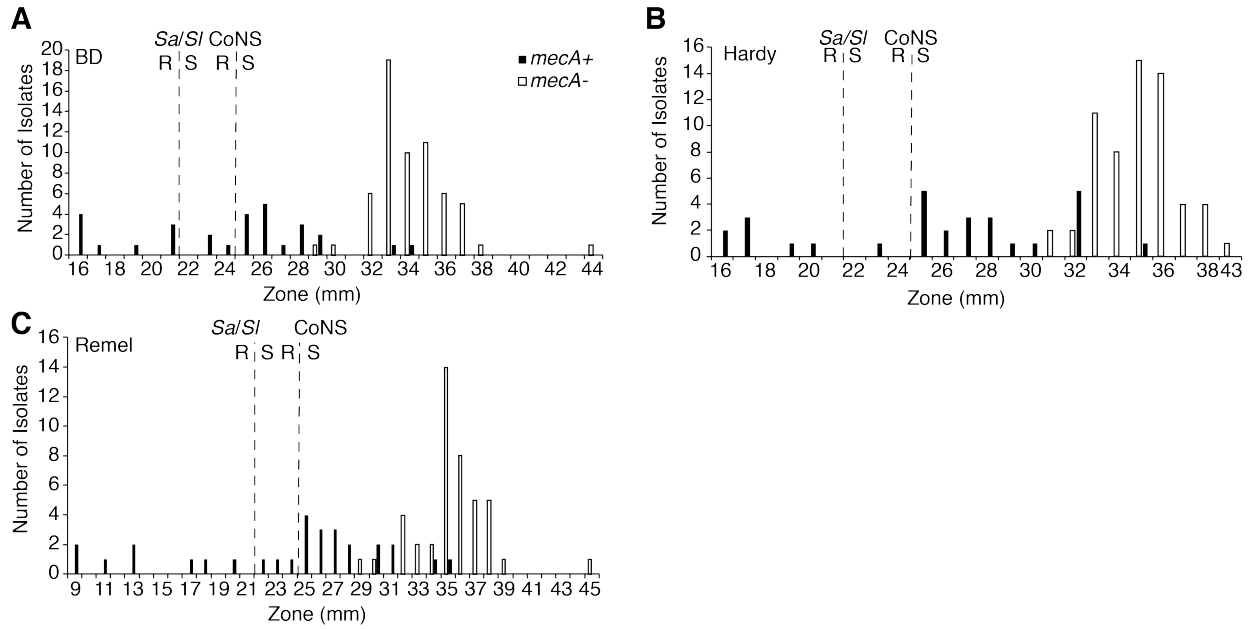
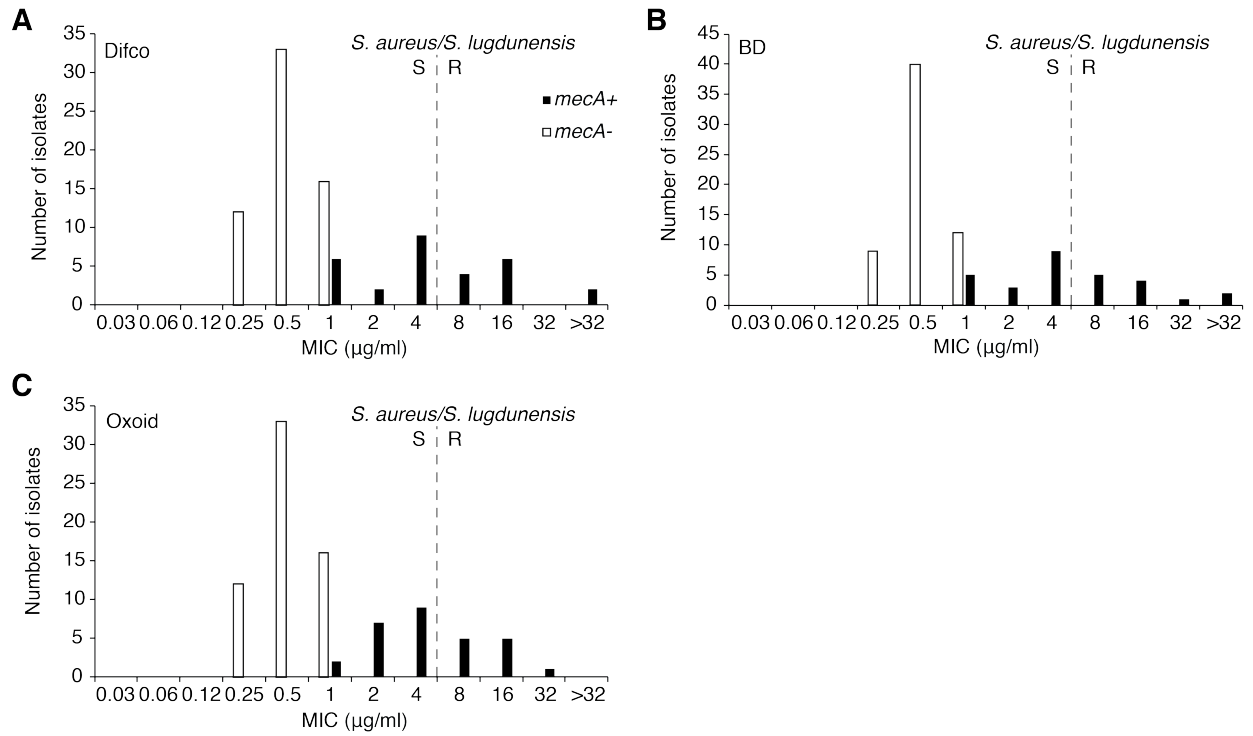


1 **SUPPLEMENTAL FIGURES**



2

3 **Supplemental Figure S1.** Distribution of cefoxitin growth inhibition zone diameters as
 4 determined by DD. M100S 27th edition DD breakpoints are shown for *S. aureus*/*S.*
 5 *lugdunensis* (Sa/SI) and coagulase-negative staphylococci excluding *S. lugdunensis*
 6 and *S. pseudintermedius* (CoNS). R=resistant. S=susceptible. **A.** BD media, n=90. **B.**
 7 Hardy media, n=90. **C.** Remel media, n=73.



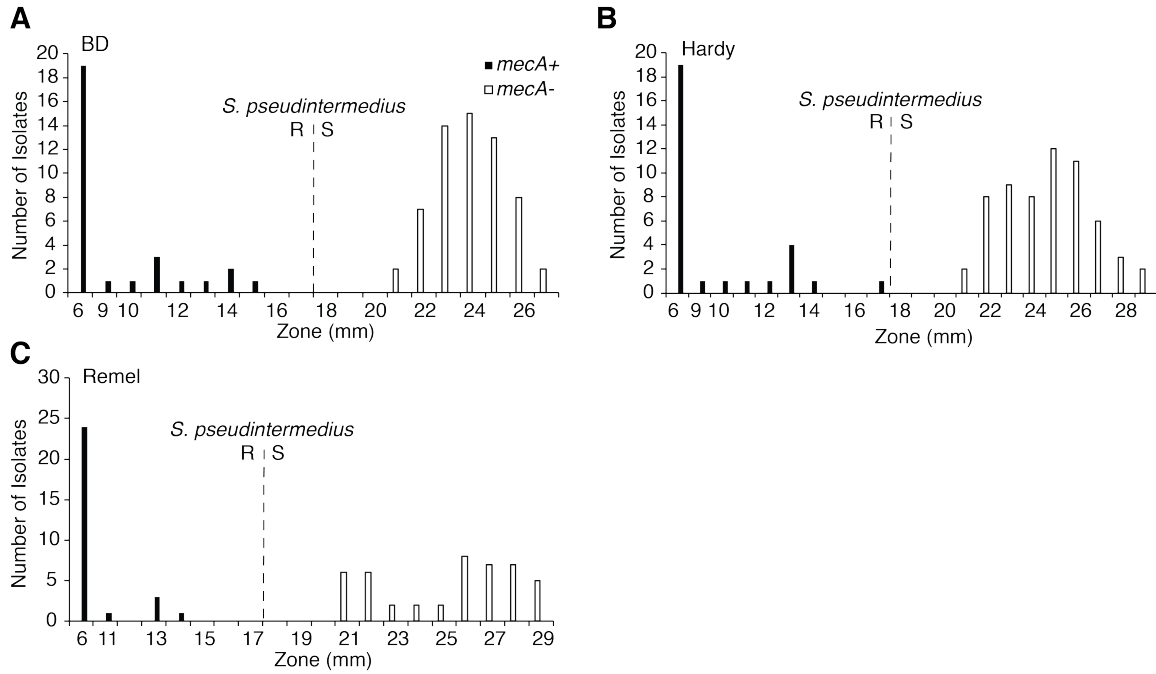
8

9 **Supplemental Figure S2.** Distribution of cefoxitin MICs as determined by BMD. M100S

10 27th edition MIC breakpoints are shown for *S. aureus/S. lugdunensis* (Sa/SI).

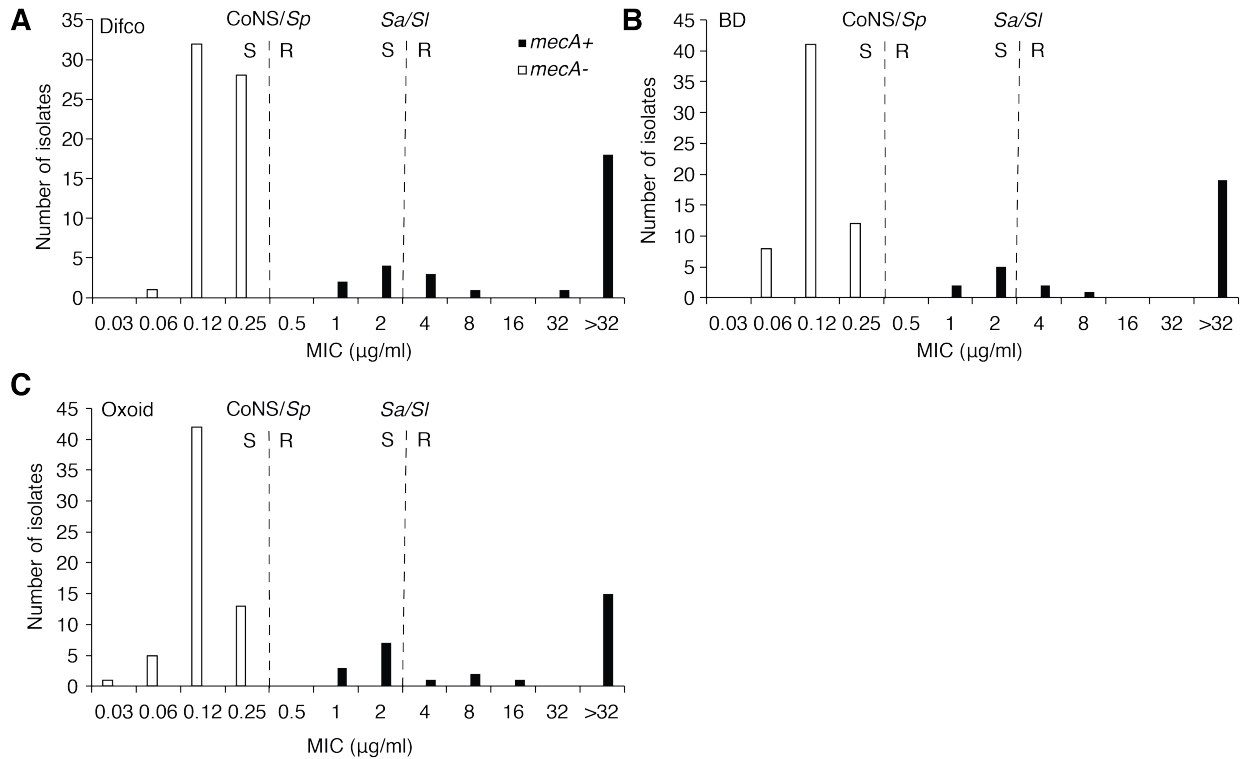
11 R=resistant. S=susceptible. **A.** Difco CA-MHB, n=90. **B.** BD CA-MHB, n=90. **C.** Oxoid

12 CA-MHB, n=90.



13

14 **Supplemental Figure S3.** Distribution of oxacillin growth inhibition zone diameters as
 15 determined by DD. M100S 27th edition DD breakpoints are shown for *S.*
 16 *pseudintermedius*. R=resistant. S=susceptible. **A.** BD media, n=90. **B.** Hardy media,
 17 n=90. **C.** Remel media, n=74.



18

19 **Supplemental Figure S4.** Distribution of oxacillin MICs as determined by BMD. M100S
 20 27th edition MIC breakpoints are shown for *S. aureus*/*S. lugdunensis* (Sa/SI) and
 21 coagulase-negative *Staphylococci* excluding *S. lugdunensis* and *S. pseudintermedius*
 22 (CoNS) and *S. pseudintermedius*. R=resistant. S=susceptible. **A.** Difco CA-MHB, n=90.
 23 **B.** BD CA-MHB, n=90. **C.** Oxoid CA-MHB, n=90.

24