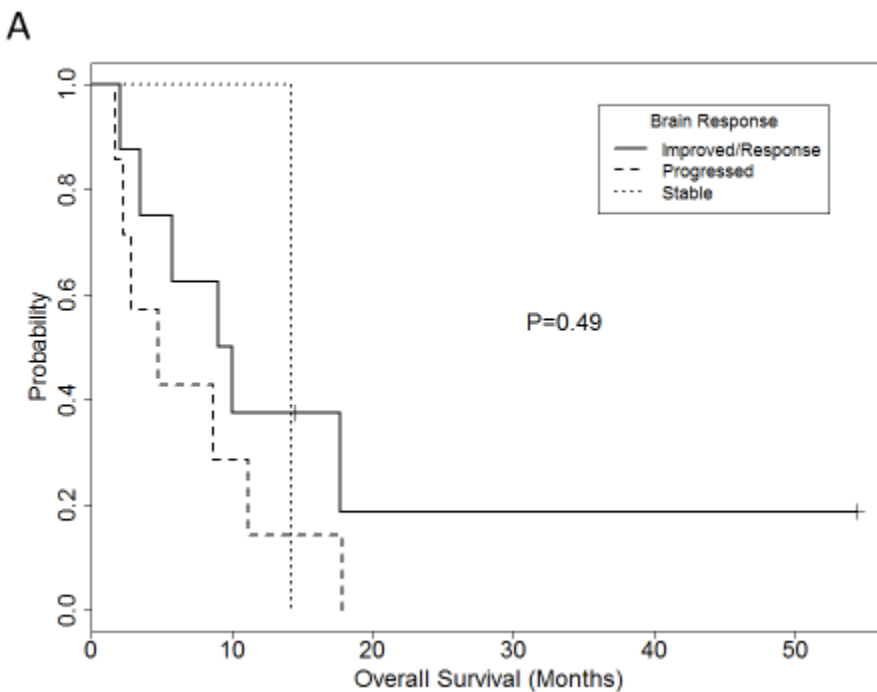


## Supplementary Material

S 1: Response evaluation in patients with LMD at baseline

Variable	Category	N (%)
Radiographic Response in Patients with Evidence of LMD of the Brain at Baseline (N=23)	Improved/Response	9 (39%)
	Progressed	10 (43%)
	No FU Data Available	3 (13%)
	Stable	1 (4%)
Radiographic Response in Patients with Evidence of LMD of the Spine at Baseline (N=19)	Improved/Response	6 (32%)
	Progressed	6 (32%)
	No FU Data Available	5 (26%)
	Stable	2 (11%)



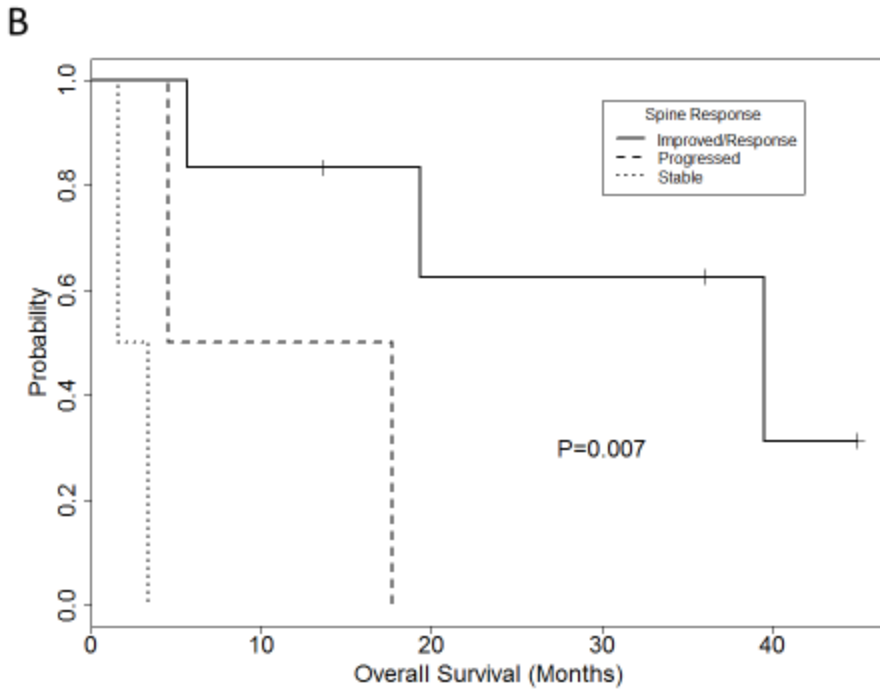


Figure S 1. Overall survival by radiographic response. Overall survival from the date of radiographic response evaluation was determined by Kaplan-Meier analysis. The figures show OS by radiographic response for patients with evidence of LMD in the brain (A,  $N=23$  patients) and the spine (B,  $N=19$  patients). Solid line, radiographic improvement/response; broken line, disease progression; dotted line, stable disease