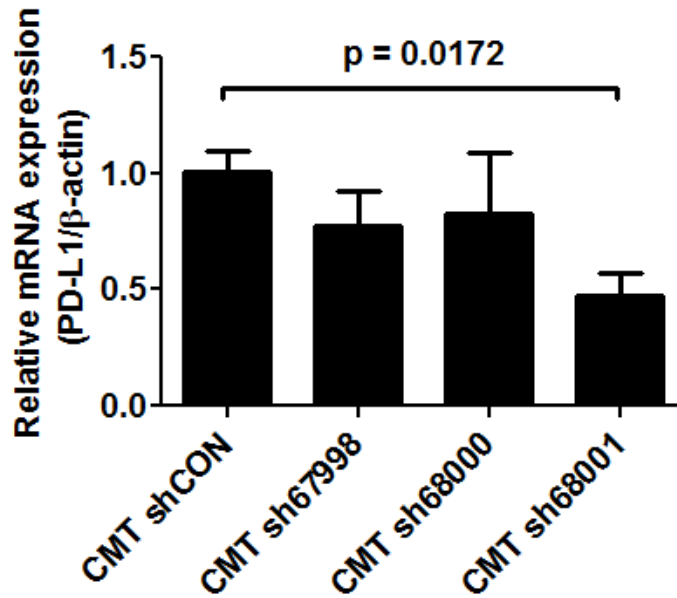
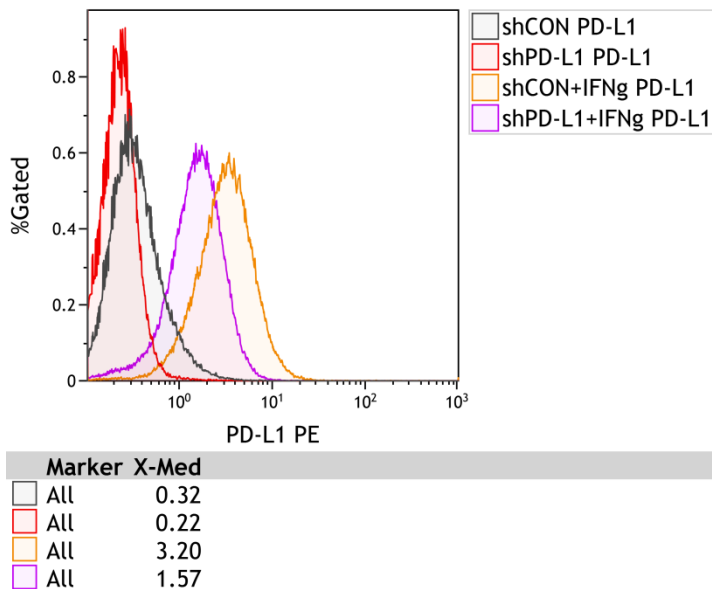


**A****B**

**Supplementary Figure S4.** CMT167 cells were transduced with lentiviral particles containing a non-targeting shRNA (shCON) or shRNA targeting PD-L1 (sh67998, sh68000, sh68001). (A) After selection with puromycin, total RNA was isolated and PD-L1 mRNA expression was determined by qRT-PCR. (B) PD-L1 surface expression by flow cytometry in CMT167 cells transduced with shRNA 68001 targeting PD-L1 (CMT shPD-L1) and control transductants (CMT shCON) showed decreased PD-L1 expression in CMT shPD-L1 cells, either at baseline (red and black histograms) or after overnight treatment with IFN $\gamma$  (purple and orange histograms).