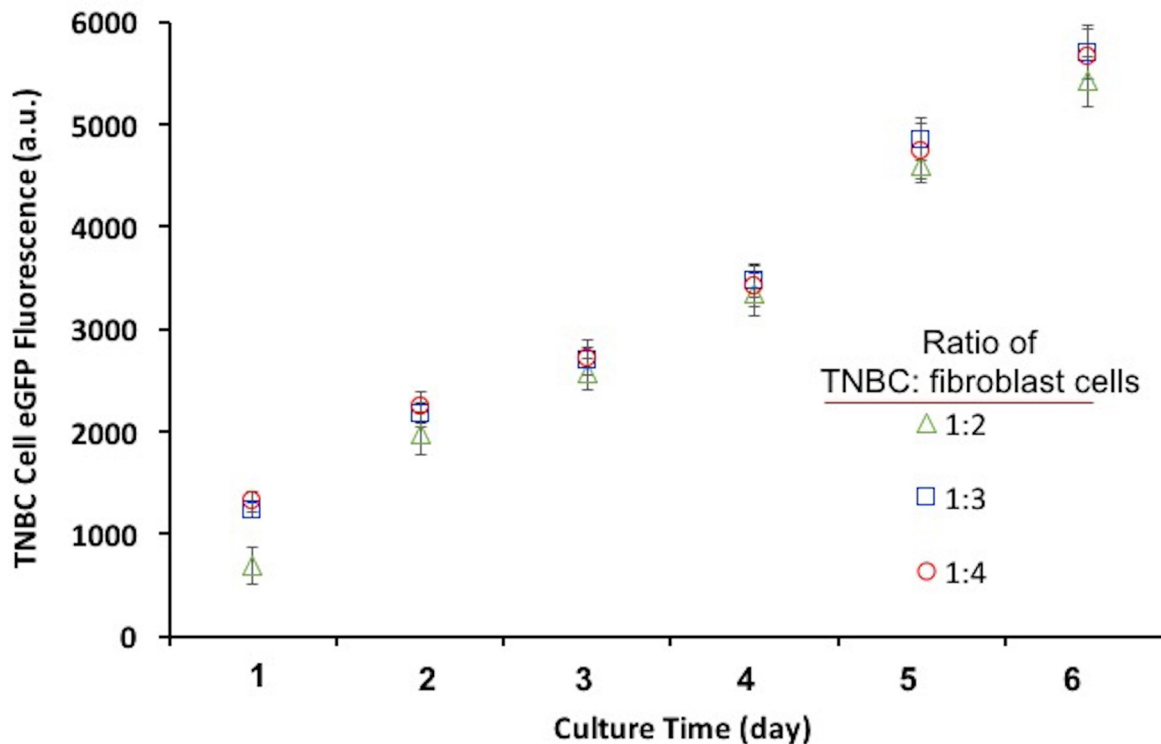
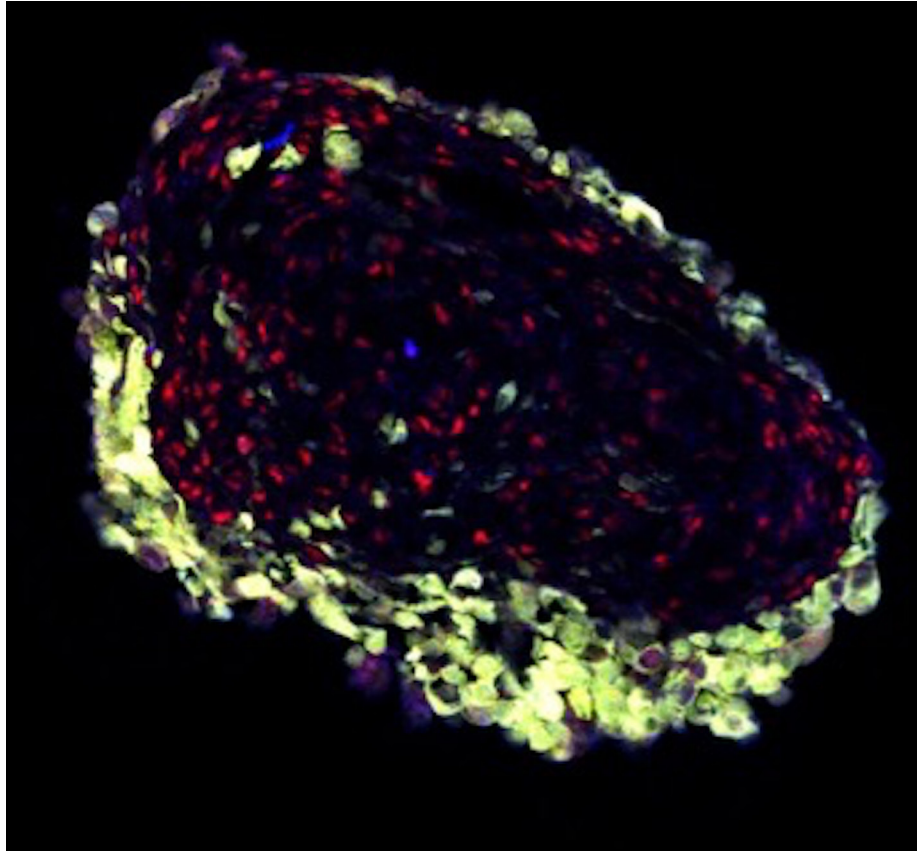


## Three-dimensional tumor model mimics stromal – breast cancer cells signaling

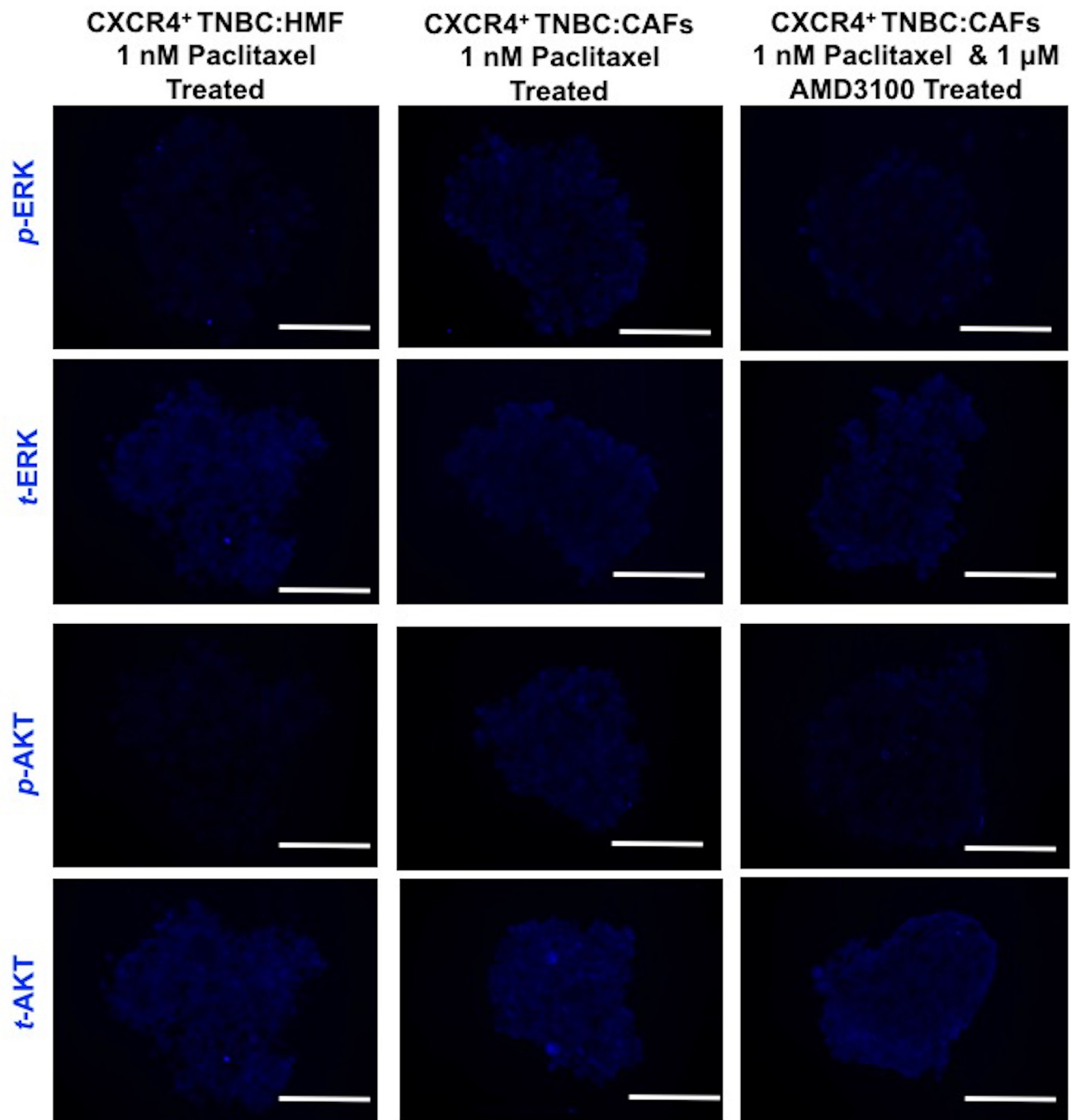
### SUPPLEMENTARY MATERIALS



Supplementary Figure 1: Increasing the density of stromal cells in co-culture spheroids to generate ratios of 1:3 and 1:4 (TNBC cells: stromal cells) does not significantly change the breast cancer cells growth compared to the model with 1:2 ratio of TNBC cells: stromal cells.



**Supplementary Figure 2: A composite image of CXCR4<sup>+</sup>TNBC:CAFs co-culture model showing that stromal cells are surrounded by the breast cancer cells.**



**Supplementary Figure 3: Immunohistochemical images corresponding to analyzed data in Figure 9.** Cryosections of co-culture spheroids of CXCR4<sup>+</sup>TNBC cells with HMF and CAFs immunostained for ERK and AKT following treatment with 1 nM paclitaxel or combination of 1 nM paclitaxel and 1  $\mu$ M AMD3100. Scale bar 200  $\mu$ m.

**Supplementary Movie 1: A 3D reconstruction of stromal:TNBC cells spheroid using confocal microscopy shows the distribution of the two cell types.** See [Supplementary\\_Movie\\_1](#)