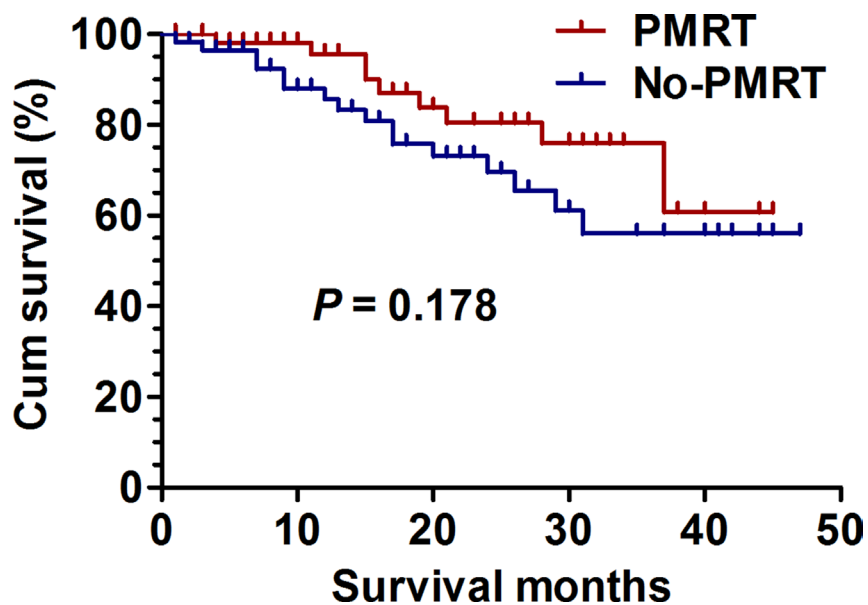
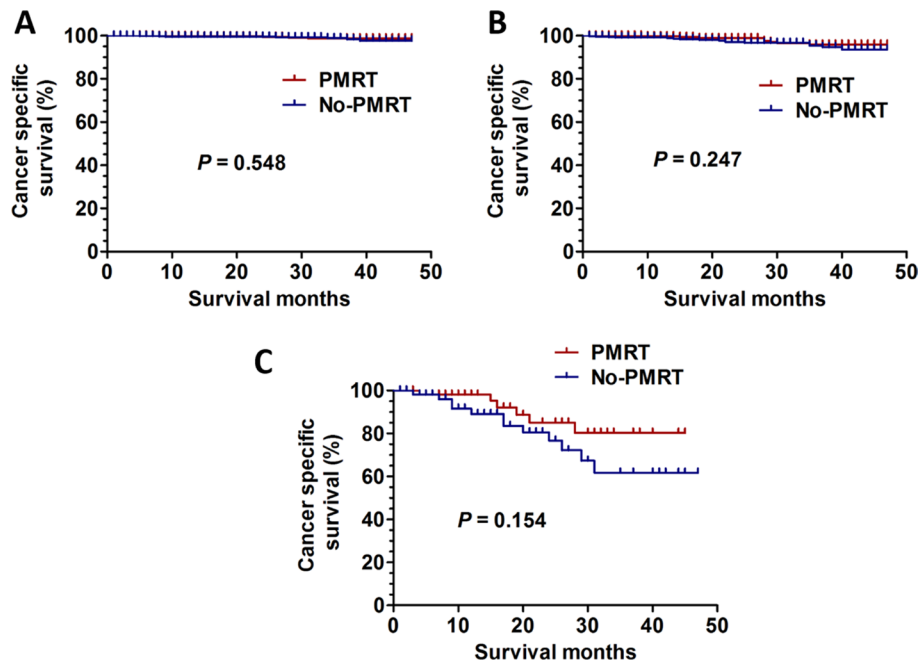


A prognostic score model to determine which breast cancer patients with 1–3 positive lymph nodes after modified radical mastectomy should receive radiotherapy

SUPPLEMENTARY MATERIALS



Supplementary Figure 1: OS curves for the patients with prognostic score of 3 ($\chi^2 = 1.813$, $P = 0.178$).



Supplementary Figure 2: CSS curves for patients with different prognostic scores. (A) CSS curves for patients with a prognostic score of 0 ($\chi^2 = 0.362$, $P = 0.548$). (B) CSS curves for patients with a prognostic score of 1 ($\chi^2 = 1.338$, $P = 0.247$). (C) CSS curves for patients with a prognostic score of 3 ($\chi^2 = 2.029$, $P = 0.154$).