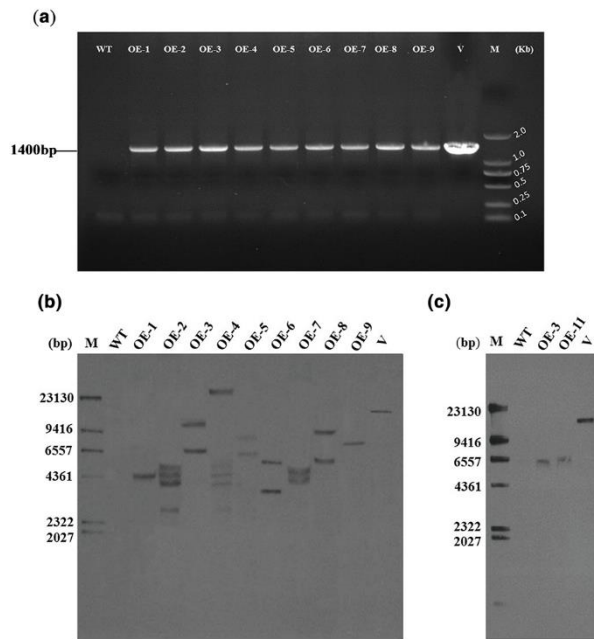


1 Supplemental data



2

3

4 Fig. S1 Southern blot of *MdATG18a* transgenic lines of tomato and apple. Young
5 tomato and apple leaves samples were collected at normal growth condition. (a) PCR
6 with DNA of nine tomato transgenic lines. Lanes: WT, wild type ‘Micro-Tom’ plants;
7 OE-1~9, nine transgenic lines; V, positive vector containing pCambia2300-*MdATG18a*
8 plasmid; M, molecular marker DL2000. (b) Southern blot of tomato transgenic lines.
9 Lanes: M, Maker; WT, wild type ‘Micro-Tom’ plants; OE-1~9, nine transgenic lines;
10 V, positive vector containing pCambia2300-*MdATG18a* plasmid. (c) Southern blot of
11 apple transgenic lines. Lanes: M, Maker; WT, non-transformed wild-type; OE-3 and -
12 11, *MdATG18a*-transgenic lines; V, positive vector containing pCambia2300-
13 *MdATG18a* plasmid.

14

15