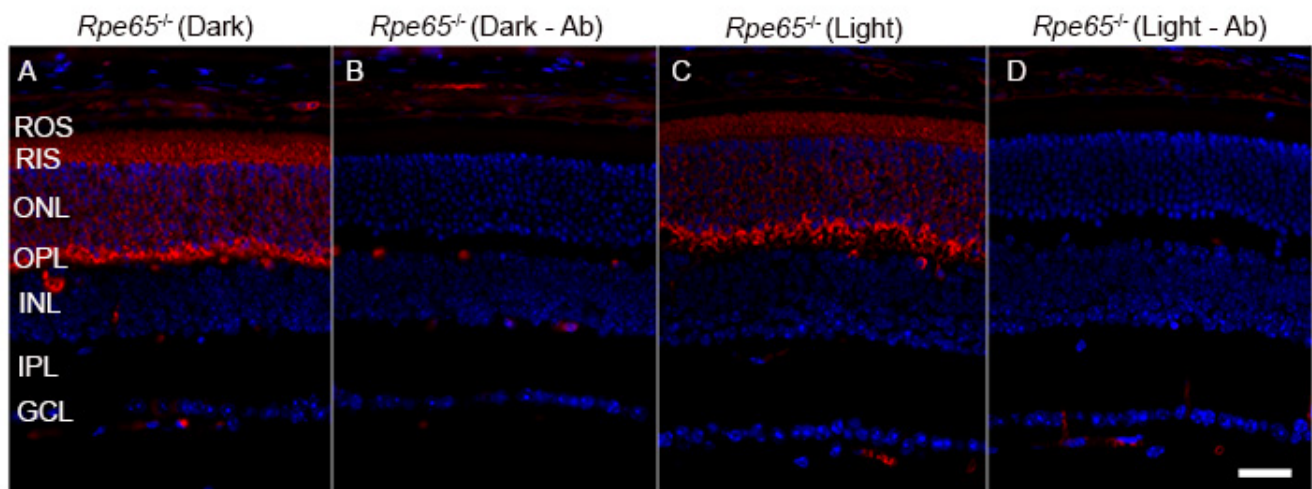


Developmental and light regulation of tumor suppressor protein PP2A in the retina

SUPPLEMENTARY MATERIAL



Supplementary Figure 1: Localization of rod arrestin in dark- and light-adapted *Rpe65*^{-/-} mice. Prefer-fixed sections of dark- (A, B) and light-adapted (C, D) *Rpe65*^{-/-} mouse retinas were stained for rod arrestin (A, C) and DAPI (A-D). Panels B and D represent the omission of primary antibody. ROS, rod outer segments; RIS, rod inner segments; ONL, outer nuclear layer; OPL, outer plexiform layer; INL, inner nuclear layer; IPL, inner plexiform layer; GCL, ganglion cell layer. Scale bar = 50 μ m.