

Supplementary Online Content

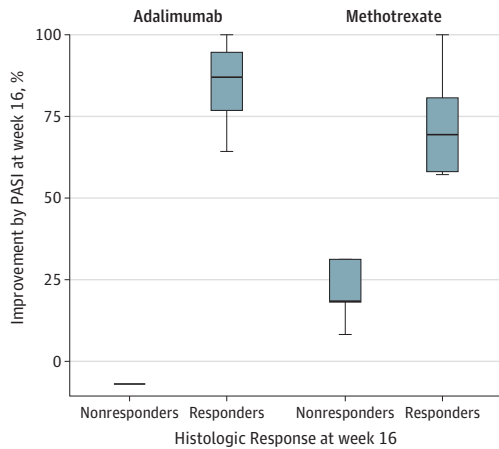
Goldminz AM, Suárez-Fariñas M, Wang AC, Dumont N, Krueger JG, Gottlieb AB. *CCL20* and *IL22* messenger RNA expression after adalimumab vs methotrexate treatment of psoriasis: a randomized clinical trial. *JAMA Dermatol*. Published online May 6, 2015. doi:10.1001/jamadermatol.2015.0452.

eFigure. Clinical and Histologic Outcomes

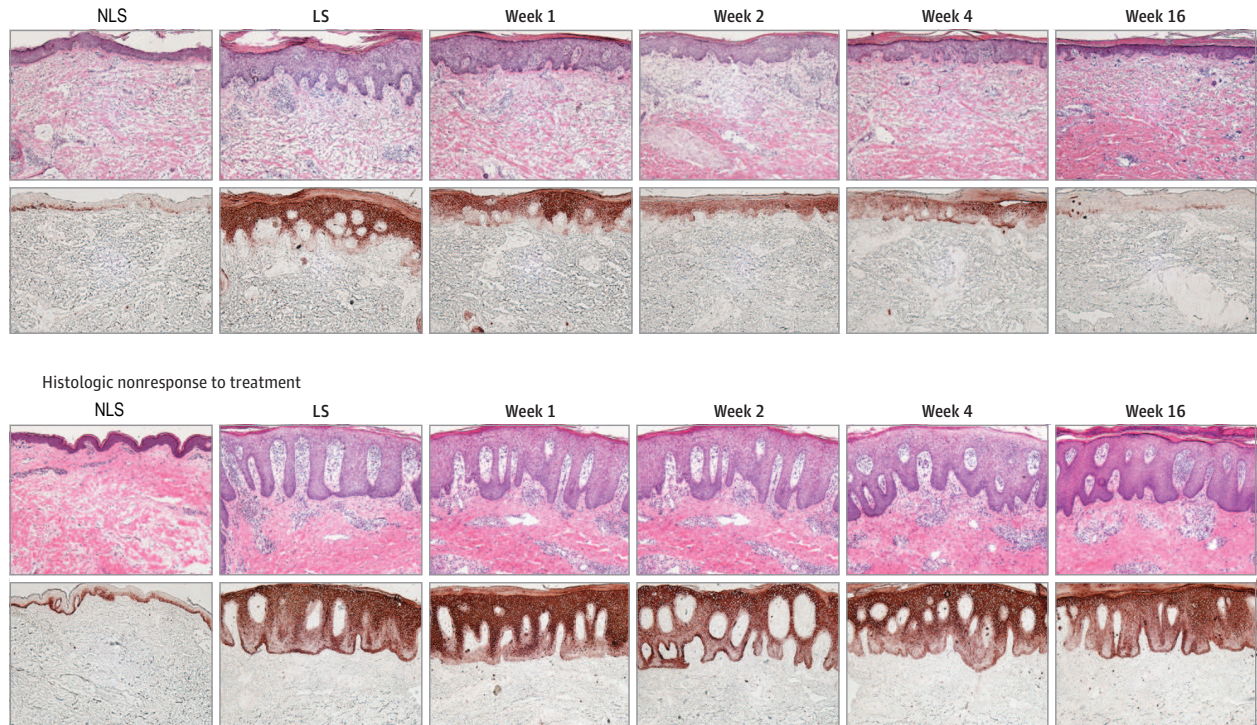
This supplementary material has been provided by the authors to give readers additional information about their work.

eFigure. Clinical and Histologic Outcomes

A PASI at week 16



B Histologic response to treatment



A, Comparison of the percentage reduction in the Psoriasis Area Severity Index (PASI) at week 16 for patients who responded (responders) and did not respond (nonresponders) to treatment with adalimumab or methotrexate sodium. The bold horizontal lines in each box represent the mean; the top and bottom borders of each box, the upper and lower quartiles, respectively; and the error bars above and below, maximum and minimum values, respectively. B, Representative histologic sections for a methotrexate treatment responder, for baseline nonlesional skin (NLS), baseline lesional skin (LS), and weeks 1, 2, 4, and 16 (top, hematoxylin-eosin; bottom, keratin 16; original magnification $\times 10$). C, Representative histologic sections for a methotrexate treatment nonresponder for NLS, LS, and weeks 1, 2, 4, and 16 (top, hematoxylin-eosin; bottom, keratin 16; original magnification $\times 10$).