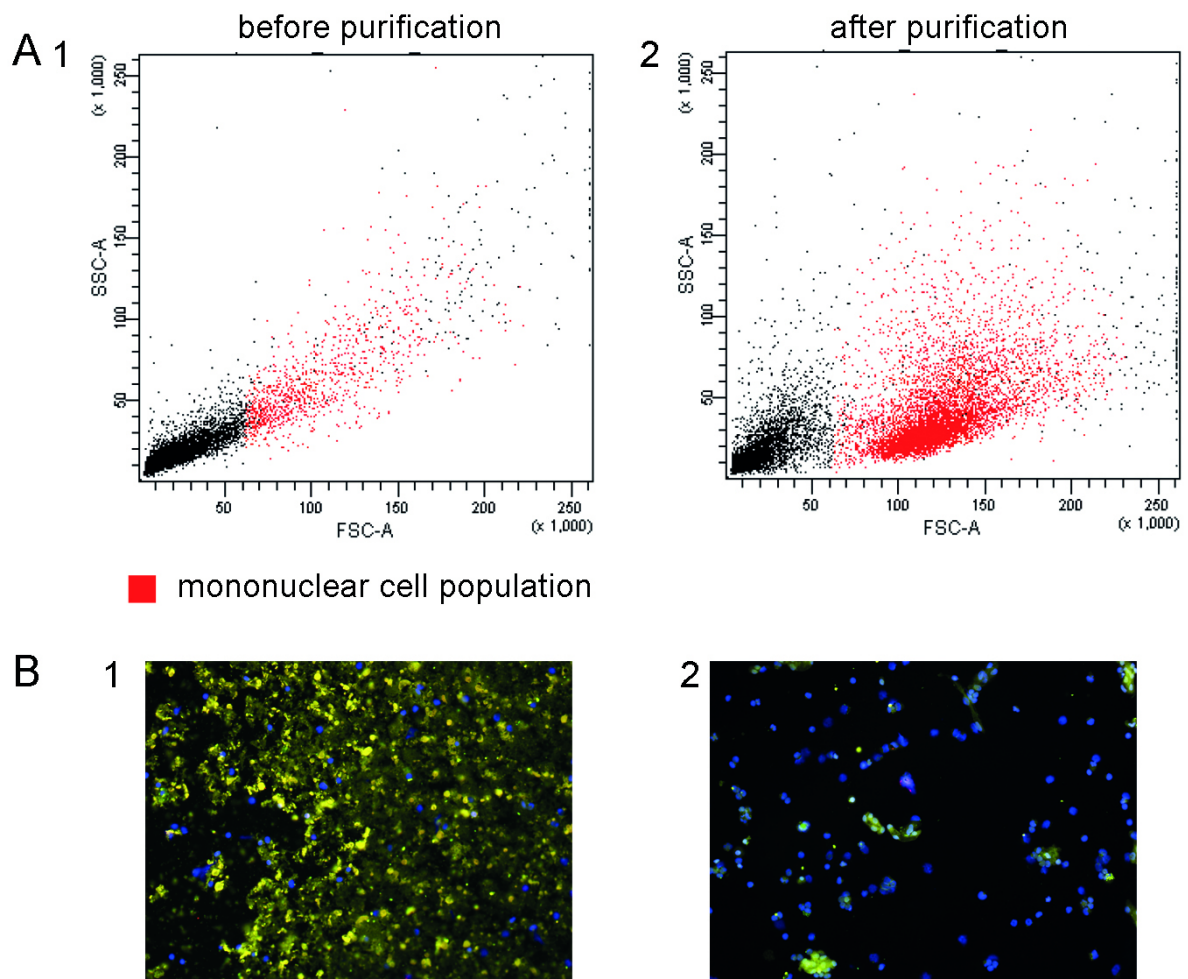


Supplementary



Supp. Fig. 1. Analysis of glioma cell purification efficiency using percoll density gradient. **A** – FACS profiles of cell suspensions before and after purification (FSC/SSC plots). After purification (**2**), mononuclear cell population constituting less than 10% of the starting material (**1**) appears. **B** – microscopy analysis of cell suspensions before (**1**) and after (**2**) purification. Merged DAPI+FITC channel images are shown to indicate cell positions (blue, chromatin) and contaminating autofluorescent cell debris (green). Significant, although incomplete, cell purification is achieved.

Supp. Table 1. Percentage of TAMRA+ and CD133+ cells in freshly isolated tumor samples, as well as in the primary cell cultures established from resection material.

| Patient # | Grade | Tumor samples | | Passage ₁ (primary cell culture) | | Passage ₂ | |
|-----------|-------|---------------|--------|--|------------------|----------------------|---------------|
| | | CD133+ | TAMRA+ | CD133+ | TAMRA+ | CD133+ | TAMRA+ |
| 1 | IV | - | 0.30 | 0.05 (day 28) | | | |
| 2 | IV | - | 1.60 | 1.15 (day 7) | | | |
| 3 | IV | 0.13 | 2.90 | 0.08 (day 7) | | 0.13 (day 23) | |
| 4 | IV | - | 3.10 | | | | |
| 5 | met | 4.71 | 11.60 | 1.52 (day 6) | | | |
| 6 | III | 0.17 | 0.30 | | | | |
| 7* | III | 0.37 | 0.68 | | | | |
| 8 | IV | - | 1.90 | | | | |
| 9 | IV | - | 0.60 | | | | |
| 10* | III | - | 1.50 | | | | |
| 11 | III | - | 2.80 | | | | |
| 12 | IV | - | 0.36 | | | | |
| 13 | III | - | 0.88 | | | | |
| 14 | IV | - | 0.32 | | | | |
| 15 | III | 2.28 | 3.26 | 0 (day 21) | 0 (day 21) | 0 (day 63) | 0 (day 63) |
| 16* | IV | 0 | 4.00 | | | | |
| 17 | III | 0 | 1.90 | 0 (day 28) | 0 (day 28) | | |
| 18 | IV | 0.06 | 6.60 | 0 (day 23) | 0 (day 23) | | 0 (day 87) |
| 19 | III | 42.50 | 4.00 | | | | |
| 20 | II | 0.23 | 0 | 0.18 (day 27) | 0.50 (day 27) | 0 (day 48) | 0 (day 48) |

| | | | | | | | |
|-----|--------|-------|------|-------------------|------------------|------------------|-----------------------------------|
| 21 | IV | 17.36 | 0.30 | 29.18 (day 9) | 0.59 (day 9) | | 0 (glia) (day 42) |
| | | | | | | | ~10 (neurospheres) (day 42) |
| 22 | IV | 2.80 | 0.40 | 1.97 (day 14) | 2.10 (day 14) | 3.71 (day 49) | 0 (day 49) |
| 23 | IV | - | 1.90 | 0.21 (day 22) | 0 (day 22) | 0.43 (day 43) | 0.09 (day 43) |
| 24 | IV | 0.13 | 0.10 | 0 (day 31) | 0 (day 31) | 0 (day 56) | 0 (day 56) |
| 25* | IV | 1.73 | 0.91 | | 0.08 (day 45) | | |
| 26 | II-III | - | 0 | | | | |
| 27* | IV | 4.75 | 1.30 | | | | |
| 28 | II-III | - | 0.05 | | | | |
| 29 | IV | 5.15 | 1.11 | 2.22 (day 37) | | | |
| 30* | IV | 5.86 | 2.02 | | | | |
| 31 | IV | 0 | 1.75 | 0 (day 14) | 0 (day 14) | | |
| 32 | IV | 2.92 | 1.02 | | | | |
| 33 | II-III | - | 0.32 | | | | |
| 34 | II-III | 0.20 | 0.22 | | | | |
| 35* | IV | 0.34 | 0 | | | | |
| 36* | IV | 0 | 0 | | | | |
| 37 | IV | - | - | 0.72 (day 27) | 0 (27 сутки) | | |
| 38 | I | 0.50 | 0.10 | | | | |
| 39* | III | 0.98 | 0.17 | 0 (day 40) | 0.45 (day 40) | 0.85 (day 76) | 1.30 (day 76) |
| 40* | IV | 0 | - | 2.09 (day 25) | 0.36 (day 25) | | |
| 41 | IV | 40.30 | 4.00 | 32.40 (day 43) | 0 (day 43) | | |
| 42* | IV | 0.43 | 0.10 | 0 (day 36) | 0.50 (day 36) | | |
| 43 | IV | 0.53 | 1.70 | 0 (day 30) | 2.80 (day 30) | | |

| | | | | | | | |
|----|--------|------|------|--|--|--|--|
| 44 | IV | 0.92 | 0.92 | | | | |
| 45 | III | - | 6.70 | | | | |
| 46 | II-III | - | 0.89 | | | | |
| 47 | II | 0.80 | 0.60 | | | | |
| 48 | II | - | 0.99 | | | | |
| 49 | IV | 0.44 | - | | | | |
| 50 | IV | 0 | - | | | | |
| 51 | III | 2.32 | 3.50 | | | | |

Note: * – disease relapse; II-III – Grade II progressing into Grade III.