

Supplementary Information

Formation of Multi-Component Extracellular Matrix Protein Fibers

Seungkuk Ahn, Keel Yong Lee, Kevin Kit Parker, and Kwanwoo Shin*

Supplementary Figure

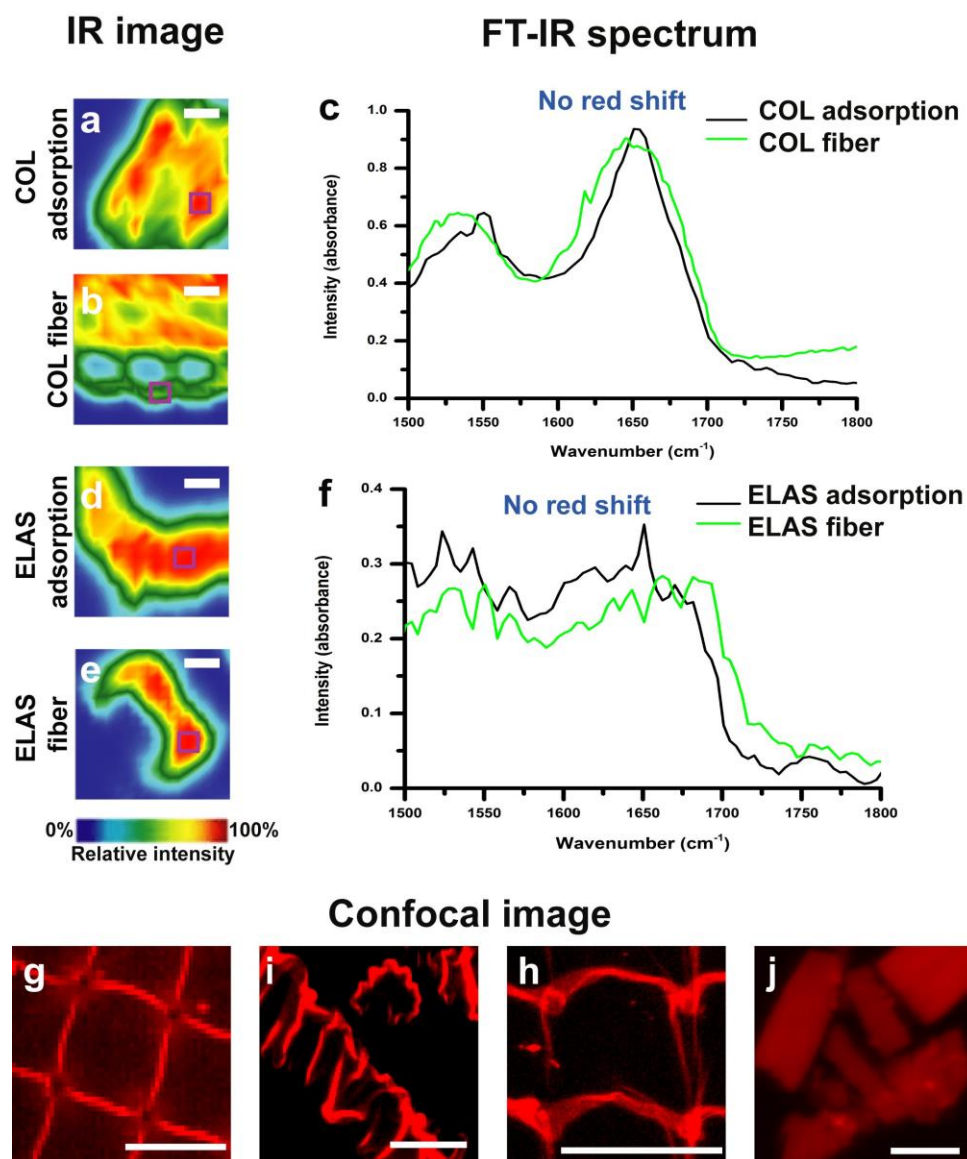


Figure S1: Single-component fibers incubated in an anionic environment. (a–f) Analysis of amide I peak shifts from IR images of adsorbed ECM proteins and ECM fibers formed by single incubation on a spin-coated 33% PSS surface: (a) COL adsorption, (b) COL fibers, and (c) FTIR spectra, where the scales of (a) and (b) are 20 μm . (d) ELAS adsorption, (e) adsorbed ELAS fibers, and (f) FTIR spectra, where the scales of (d) and (e) are 20 μm . (g–i) Confocal microscopy images of ECM protein fibers formed by single incubation on PSS micro-patterns: (g) FN and (h) LAM fibers, (i) anisotropic COL fibers, and (j) simply adsorbed ELAS fibers. The scales of (g), (h), (i), and (j) are 50, 50, 25, and 100 μm , respectively.

Supplementary Videos

Video 1. 3D view of LAM (green) on pre-existing FN fibers (red)

Video 2. 3D view of FN (green) on pre-existing LAM fibers (red)

Video 3. 3D view of a mixture of FN (green) and LAM (red) on PSS micro-patterns

Video 4. 3D view of COL (green)-coated FN (red) fibers

Video 5. 3D view of FN (red)-induced COL (green) fibers

Video 6. 3D view of ELAS (red) on pre-existing FN fibers (green)