

Fig 1. Effects of CXCL11 transduction into Human CAR T cells

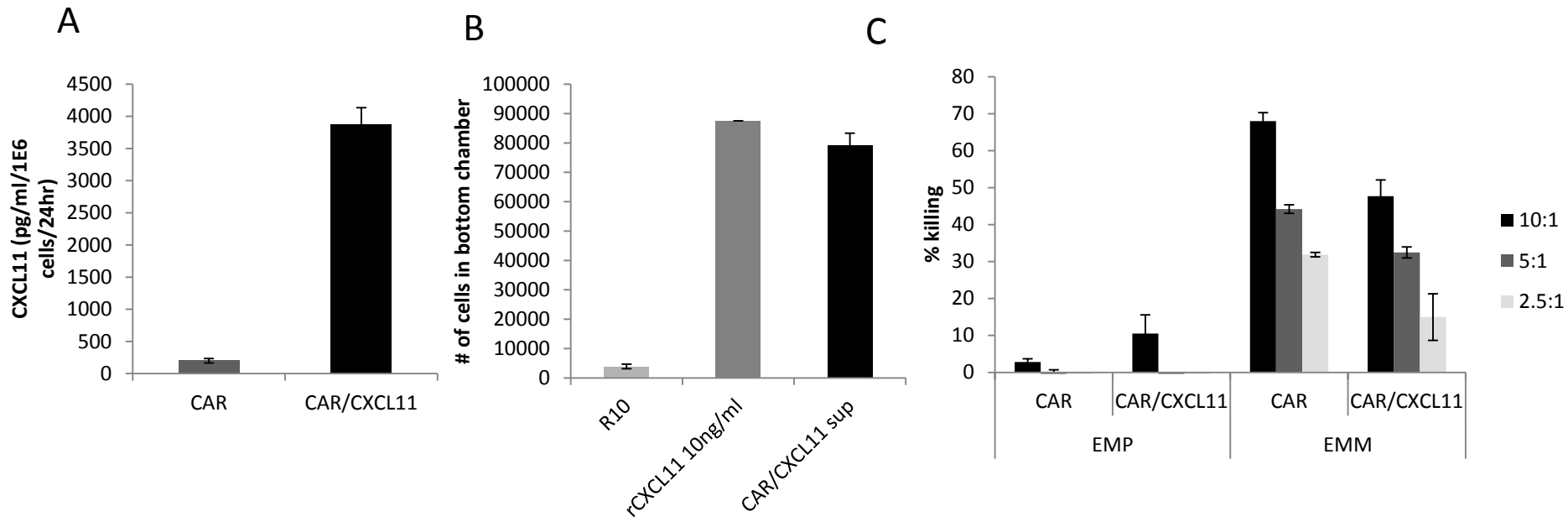
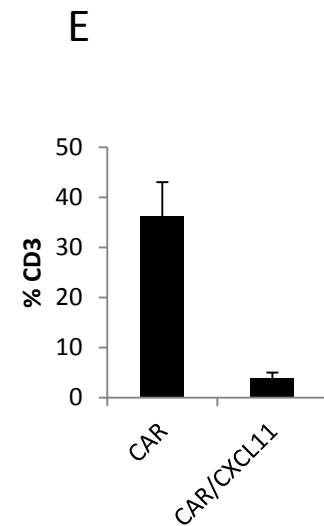
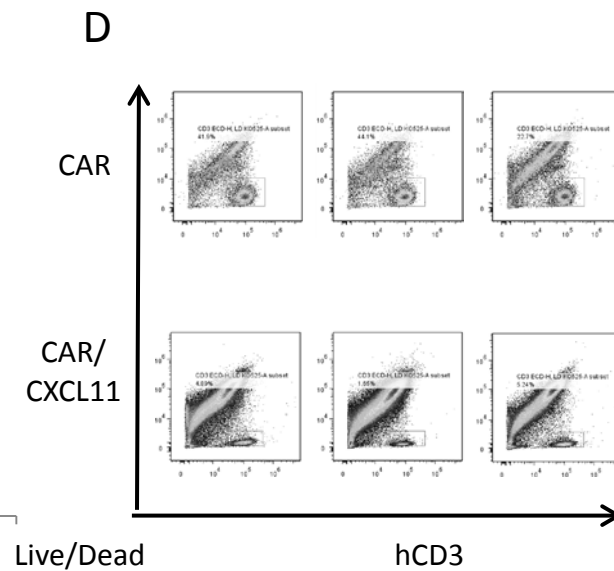
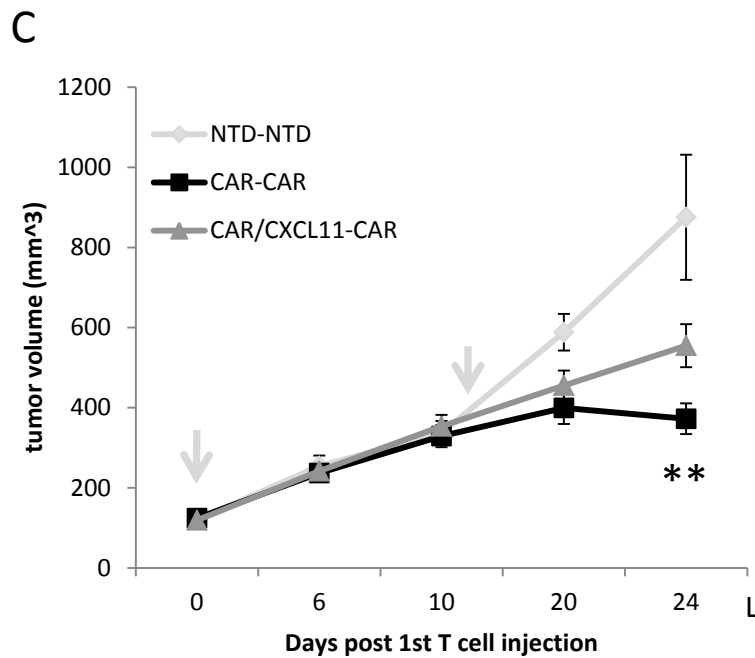
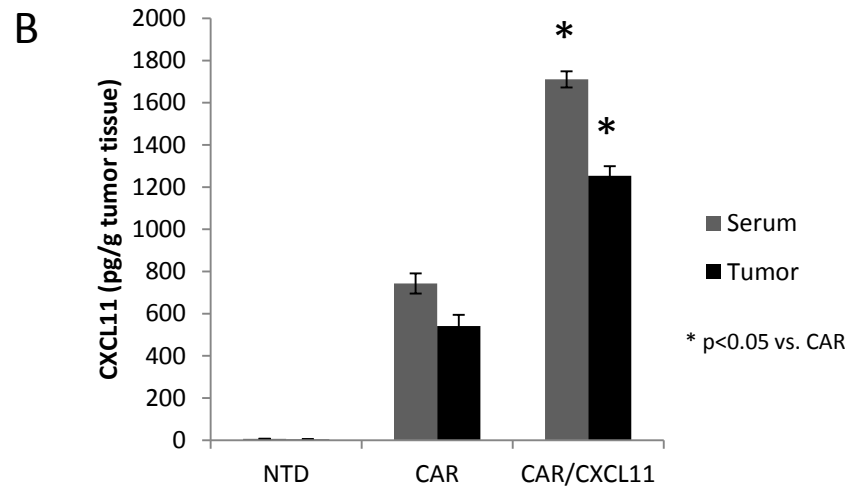
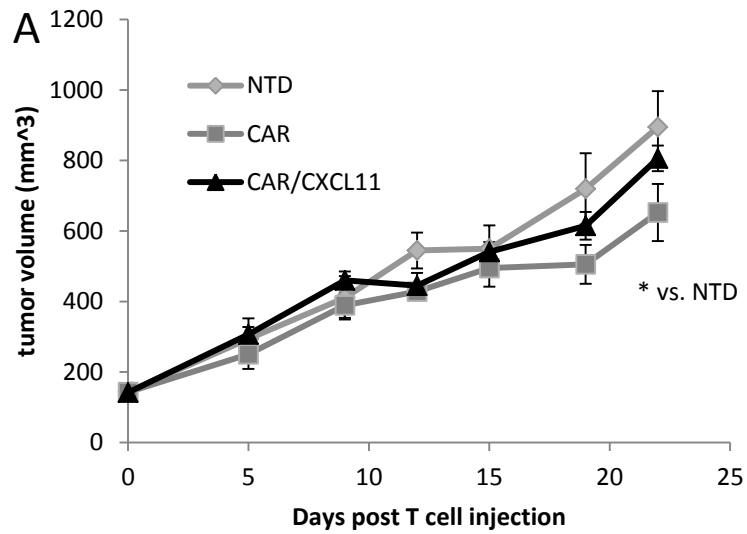


Figure 2



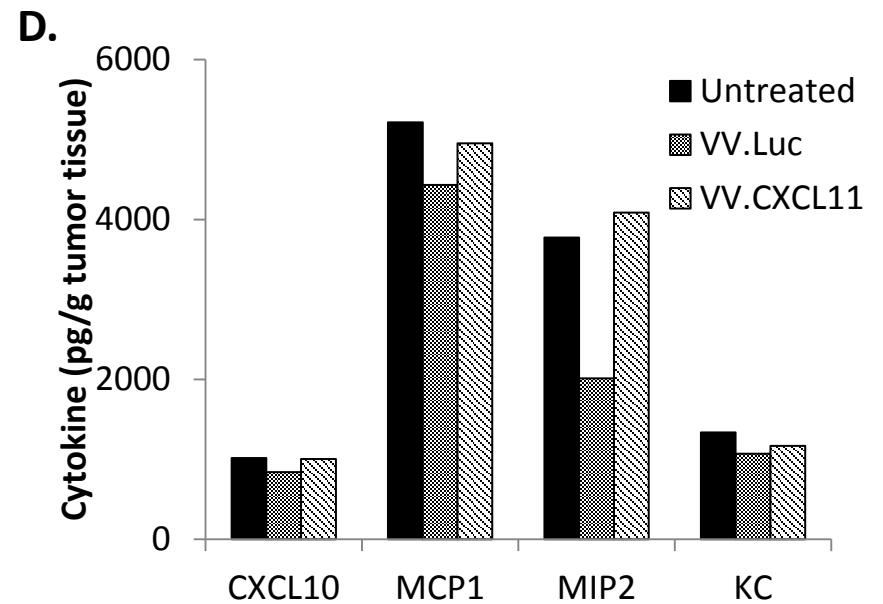
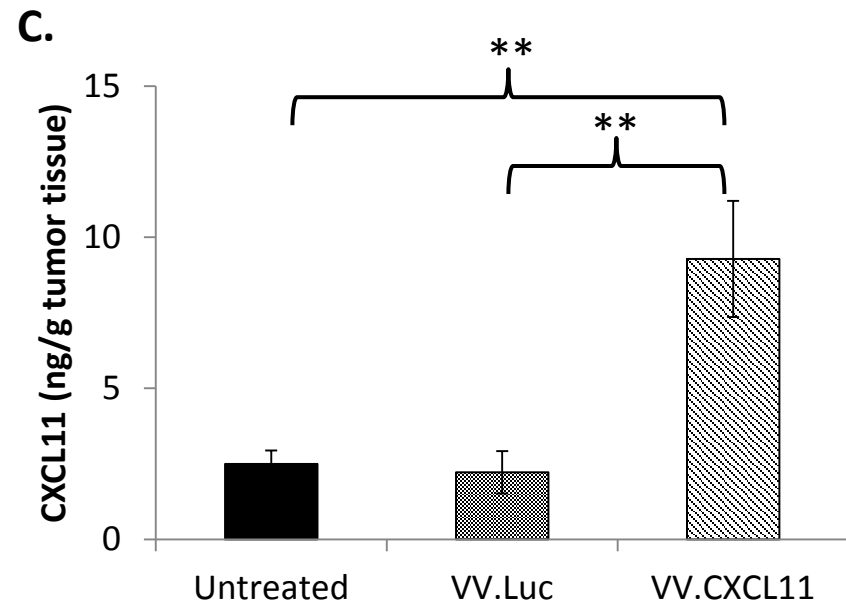
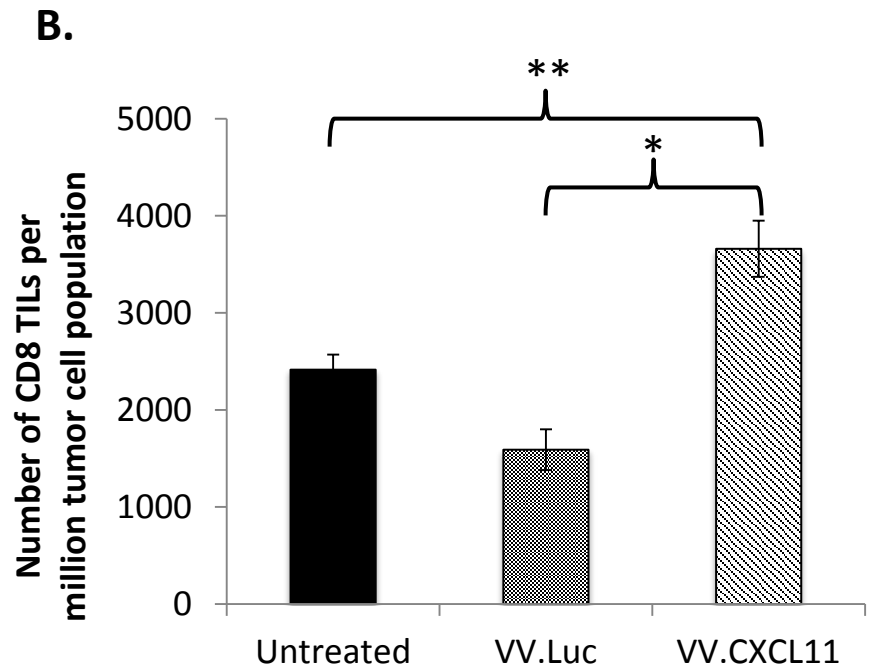
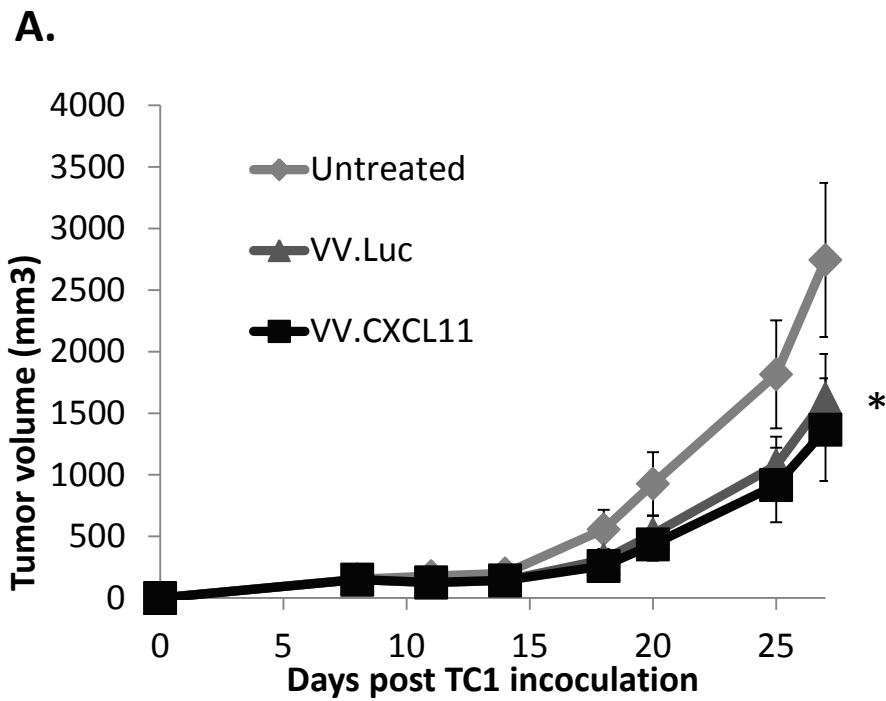
**Figure 3**

Figure 4

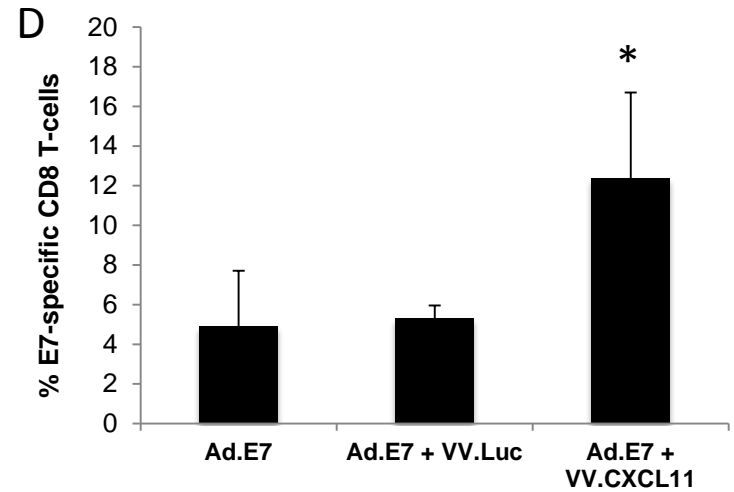
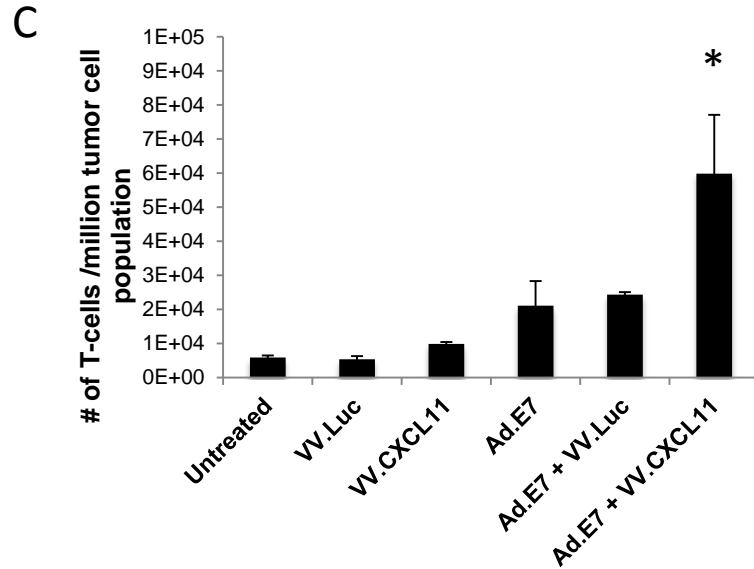
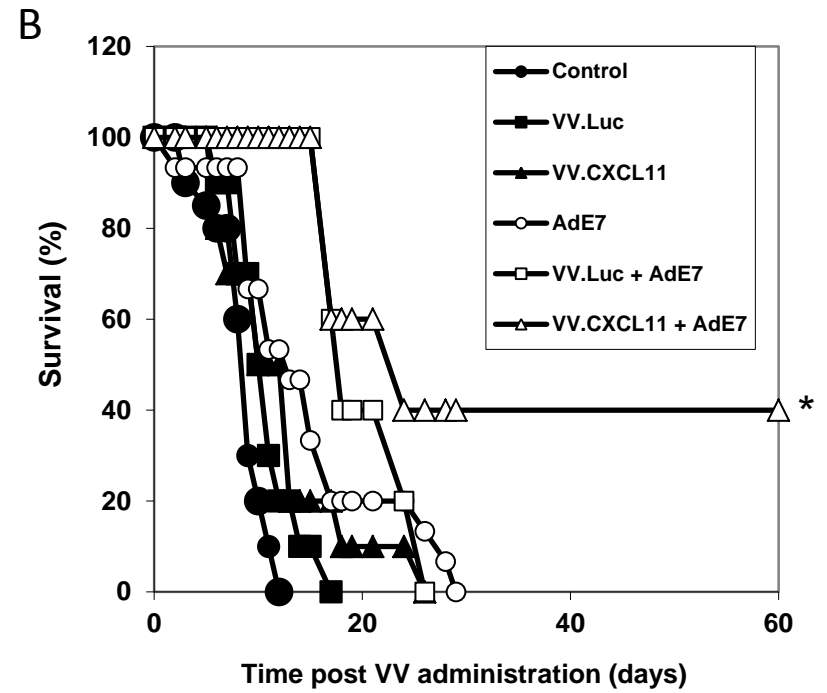
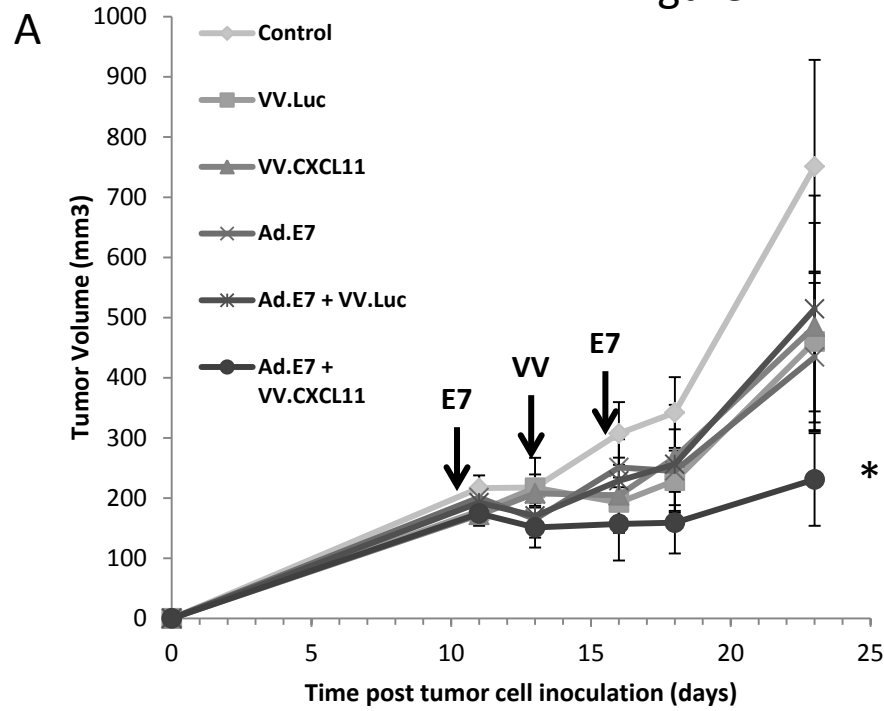
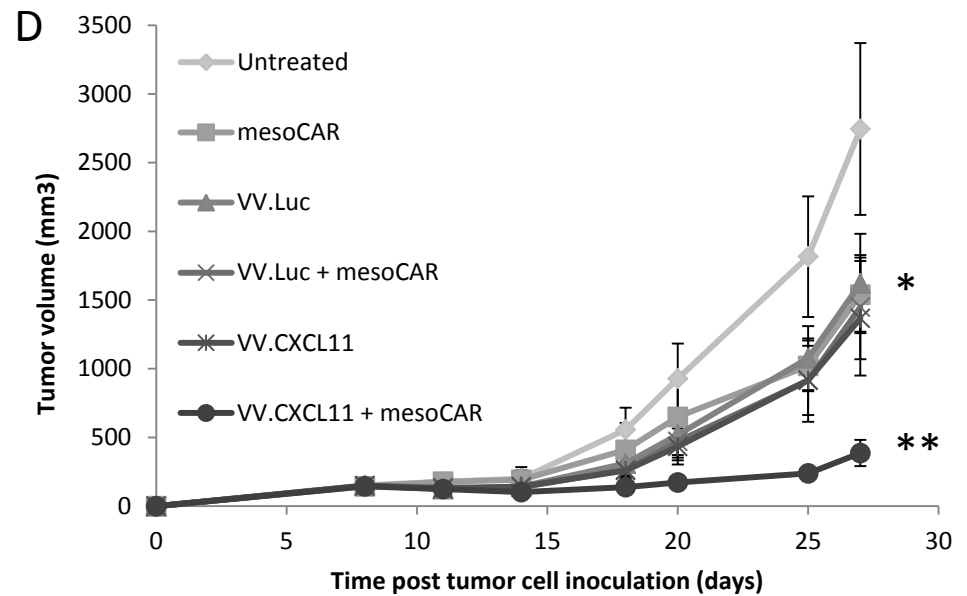
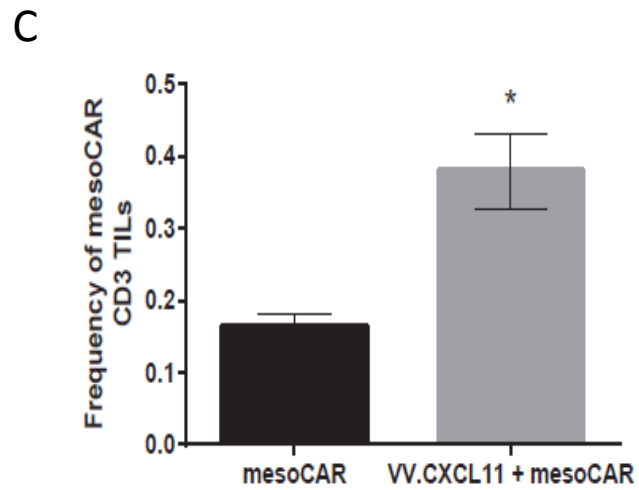
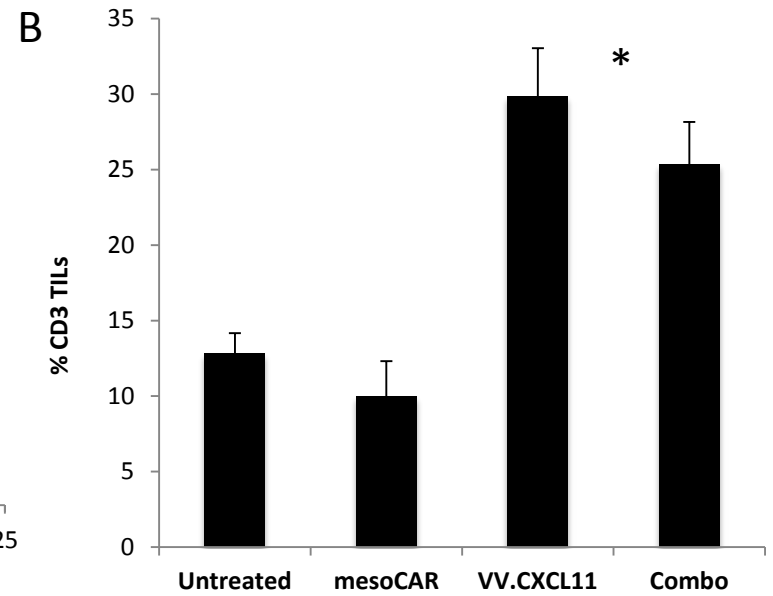
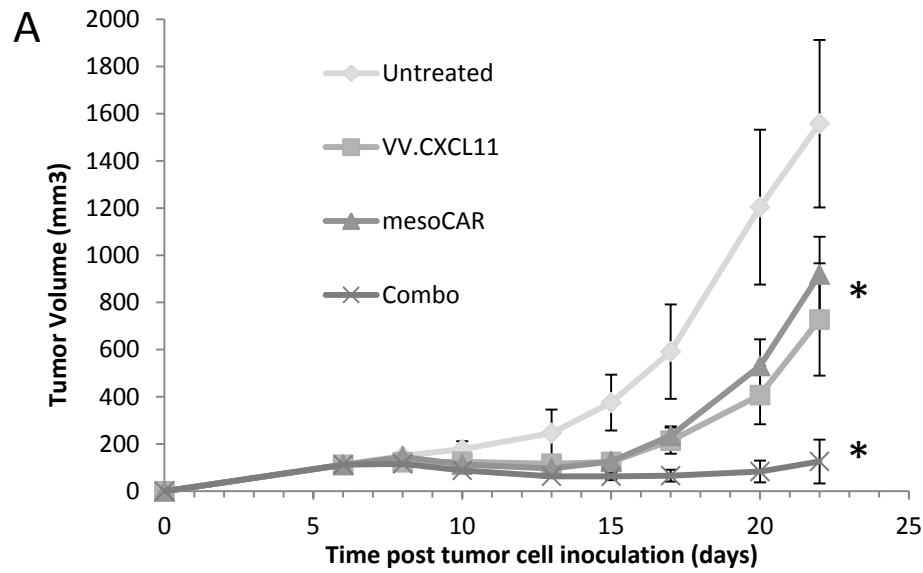


Fig. 5

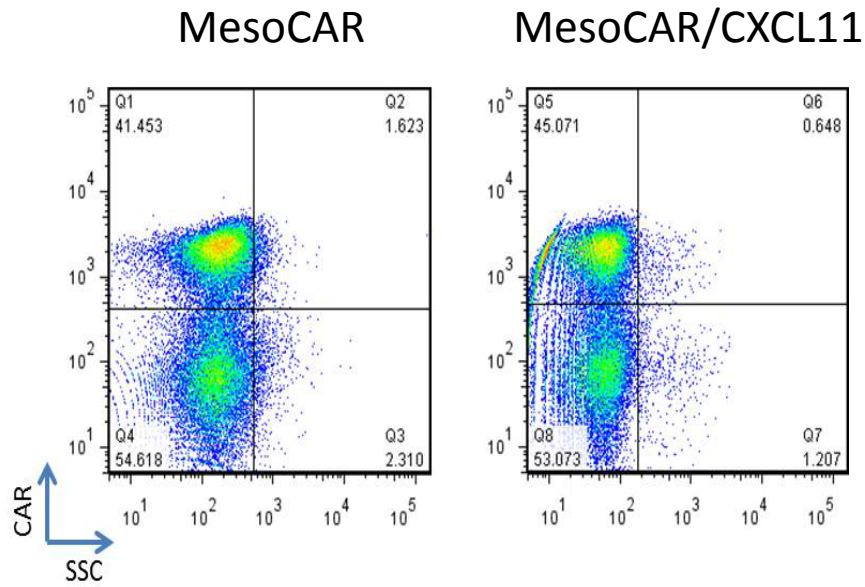


**Suppl Fig 1.** Diagram of our lentiviral expression plasmid encoding for SS1BBz and CXCL11

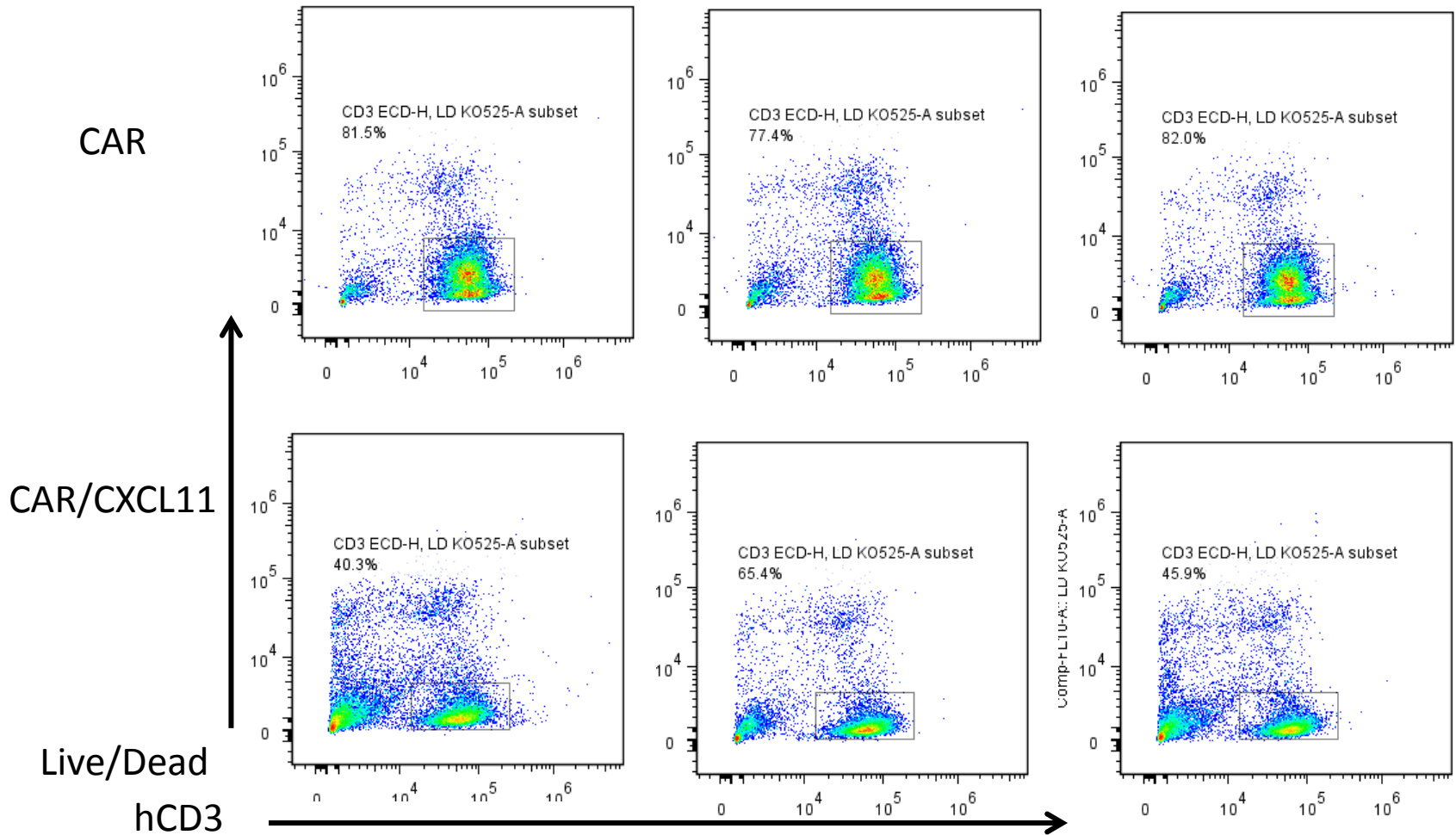


tm = transmembrane

# Supplemental Fig 2.

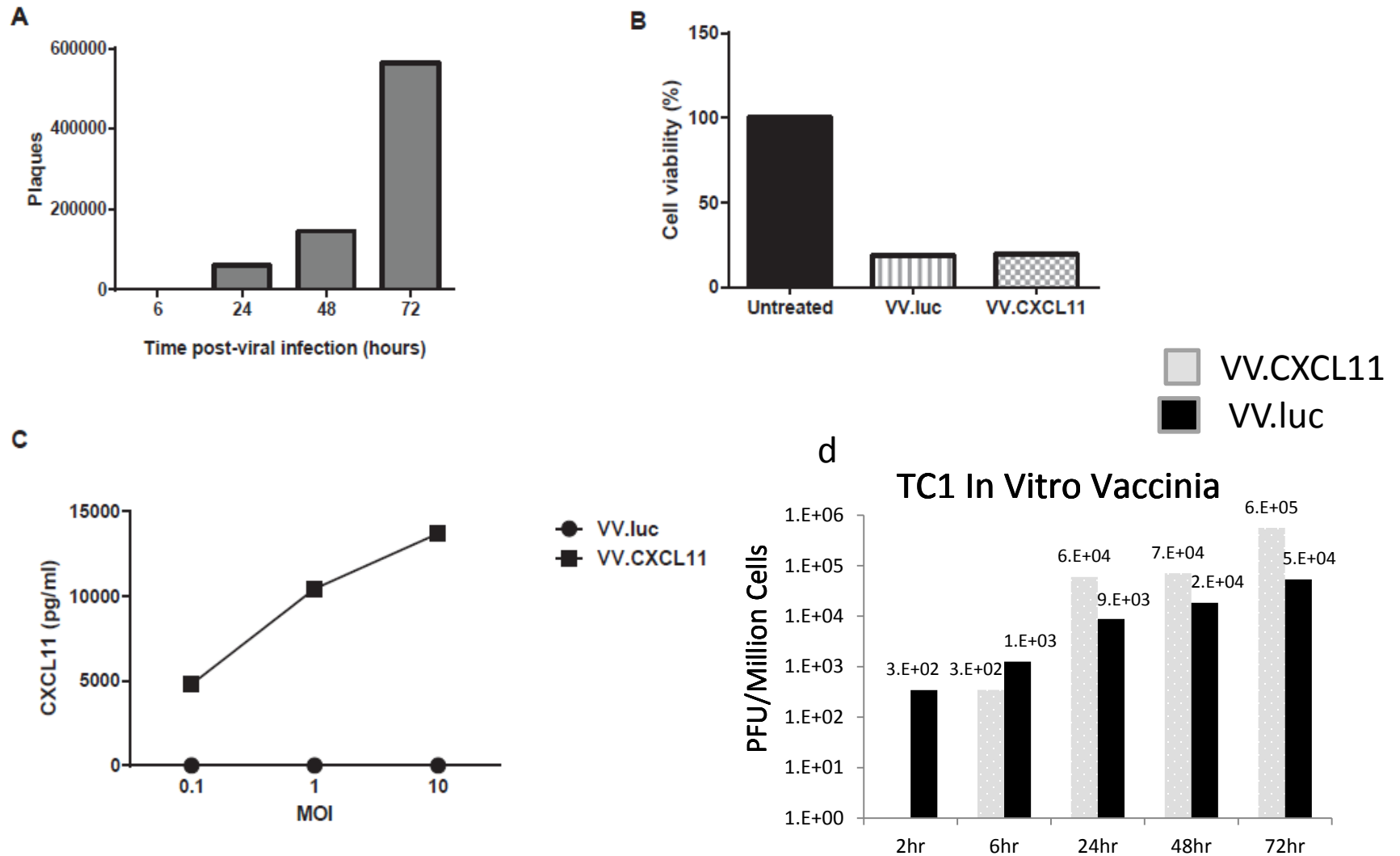


# Suppl. Figure 3 -% human T cells in SPLEENS





Suppl. Fig 4 Characteristics of VV.CXCL11 virus



Supplemental Figure 5. Induction of intratumoral E7 tetramers by viruses alone

