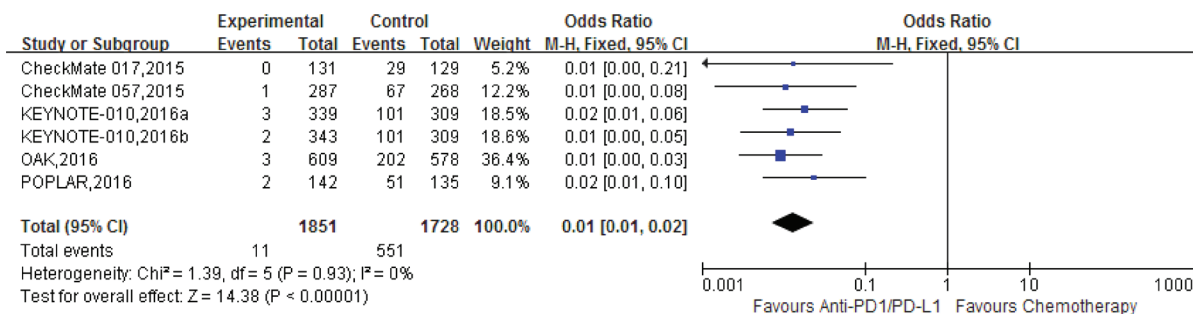
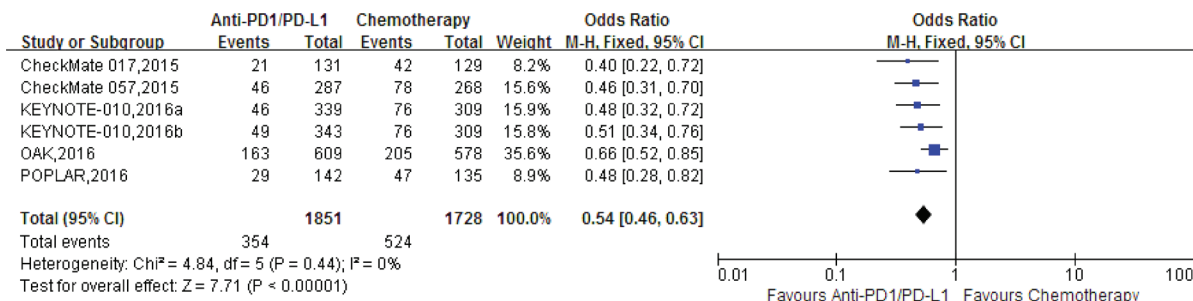


The efficacy and safety of anti-PD-1/PD-L1 antibody therapy versus docetaxel for pretreated advanced NSCLC: a meta-analysis

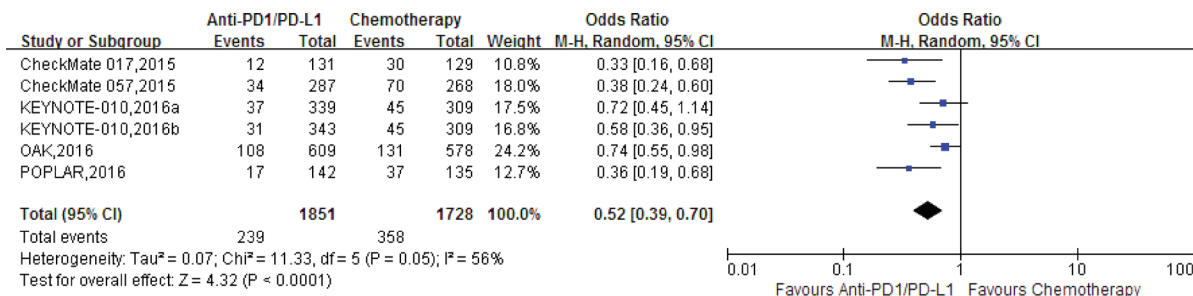
SUPPLEMENTARY MATERIALS



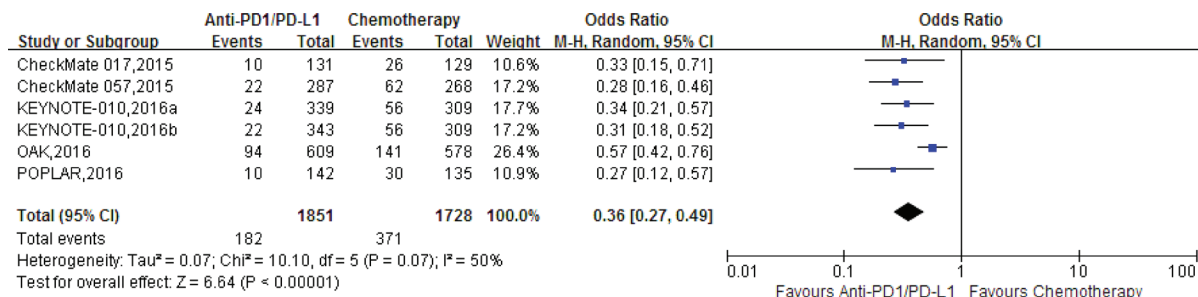
Supplementary Figure 1: The forest plot of alopecia in advanced NSCLC patients who received anti-PD1/PD-L1 antibody therapy compared to docetaxel.



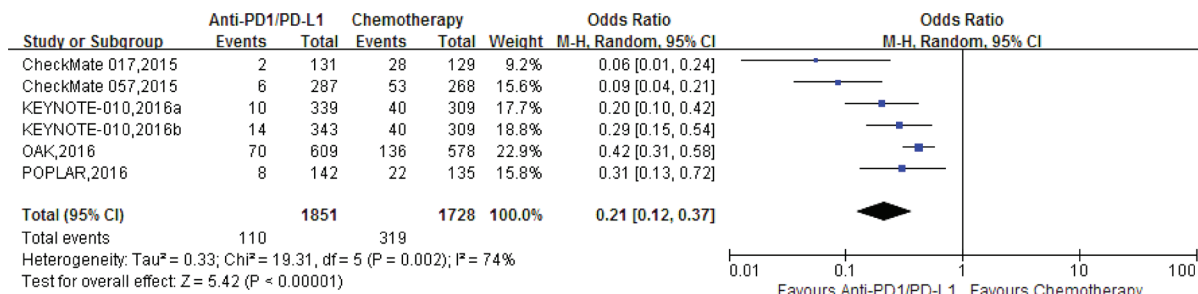
Supplementary Figure 2: The forest plot of fatigue in advanced NSCLC patients who received anti-PD1/PD-L1 antibody therapy compared to docetaxel.



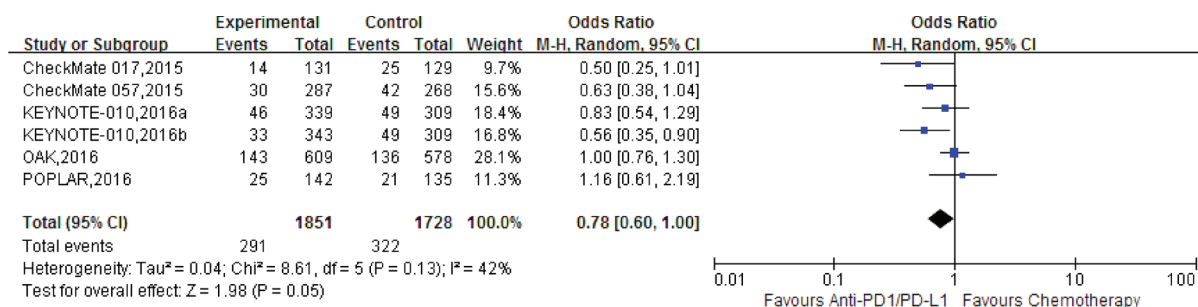
Supplementary Figure 3: The forest plot of nausea in advanced NSCLC patients who received anti-PD1/PD-L1 antibody therapy compared to docetaxel.



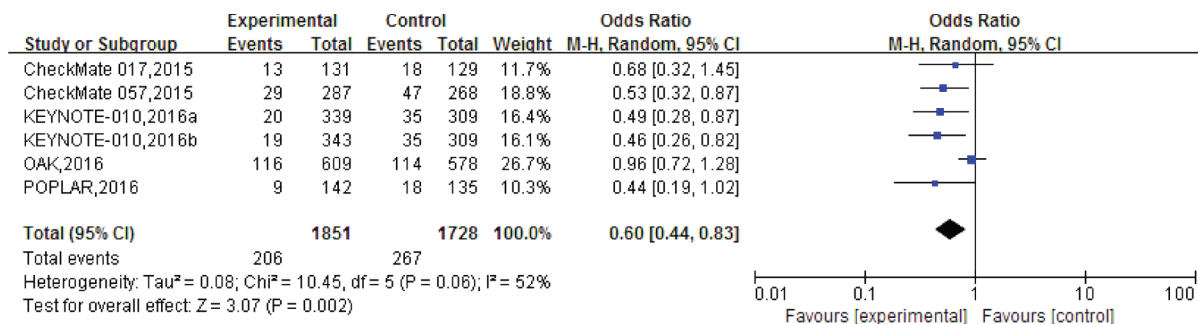
Supplementary Figure 4: The forest plot of diarrhea in advanced NSCLC patients who received anti-PD1/PD-L1 antibody therapy compared to docetaxel.



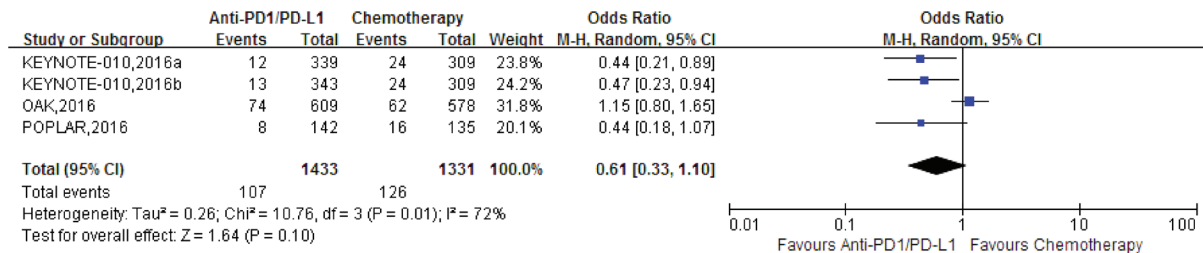
Supplementary Figure 5: The forest plot of anemia in advanced NSCLC patients who received anti-PD1/PD-L1 antibody therapy compared to docetaxel.



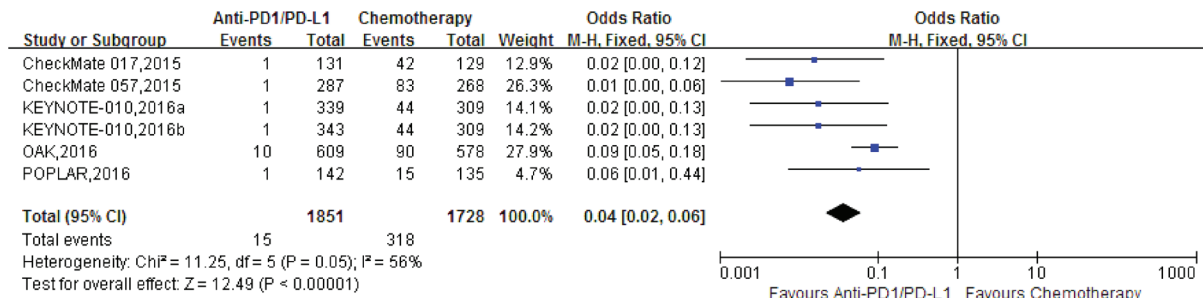
Supplementary Figure 6: The forest plot of decreased appetite in advanced NSCLC patients who received anti-PD1/PD-L1 antibody therapy compared to docetaxel.



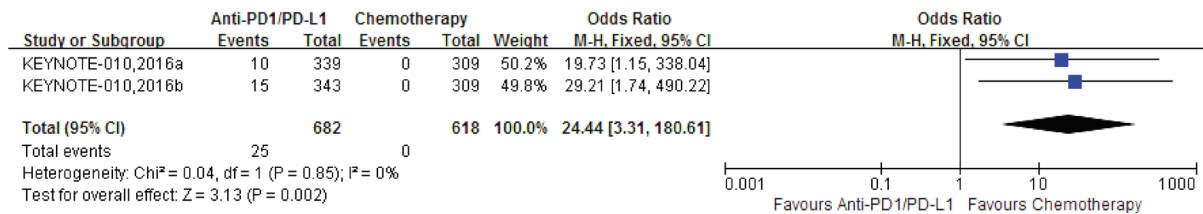
Supplementary Figure 7: The forest plot of asthenia in advanced NSCLC patients who received anti-PD1/PD-L1 antibody therapy compared to docetaxel.



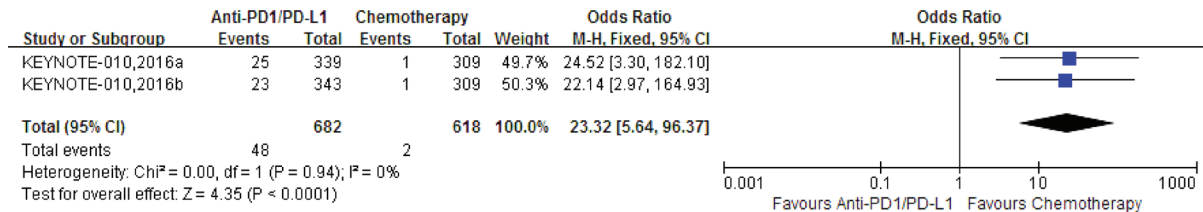
Supplementary Figure 8: The forest plot of vomiting in advanced NSCLC patients who received anti-PD1/PD-L1 antibody therapy compared to docetaxel.



Supplementary Figure 9: The forest plot of neutropenia in advanced NSCLC patients who received anti-PD1/PD-L1 antibody therapy compared to docetaxel.



Supplementary Figure 10: The forest plot of hyperthyroidism in advanced NSCLC patients who received anti-PD1/PD-L1 antibody therapy compared to docetaxel.



Supplementary Figure 11: The forest plot of hypothyroidism in advanced NSCLC patients who received anti-PD1/PD-L1 antibody therapy compared to docetaxel.