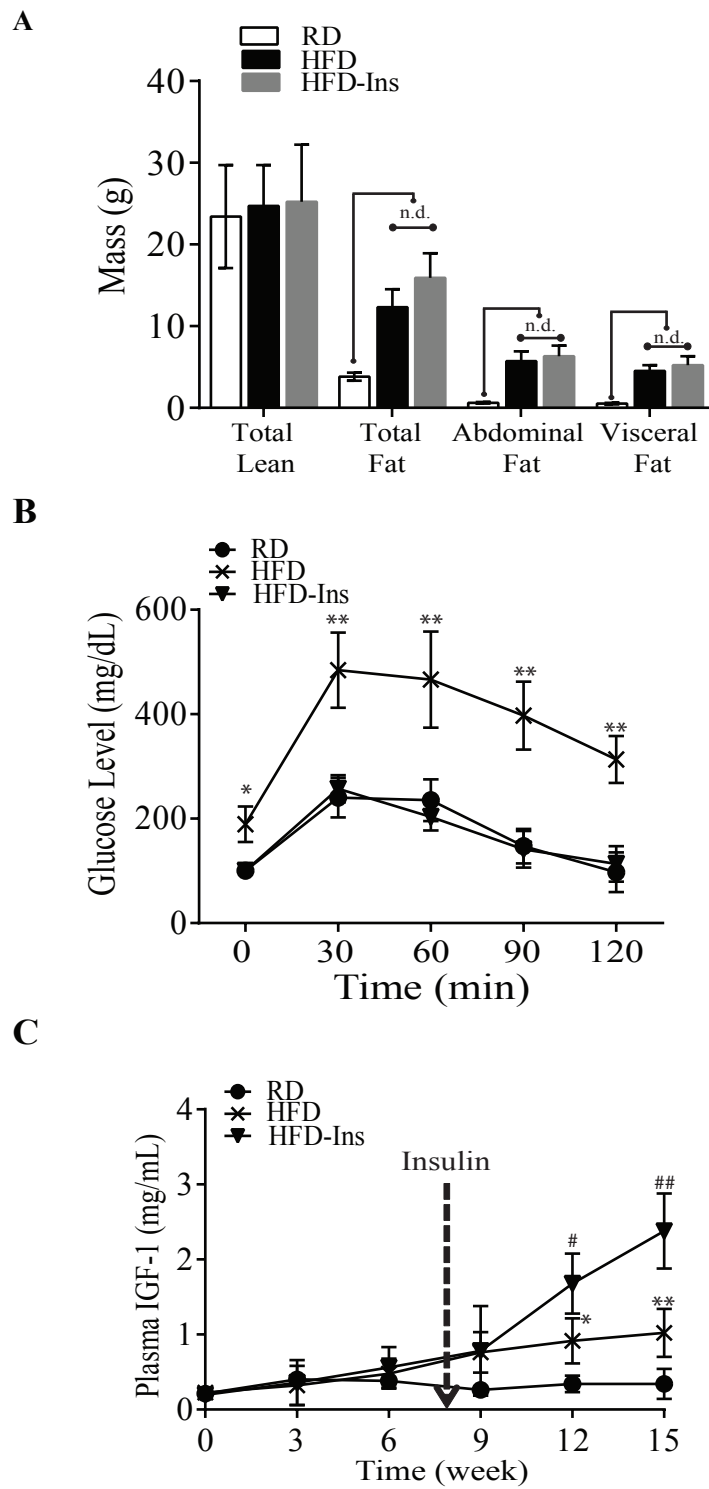


Supplement Material

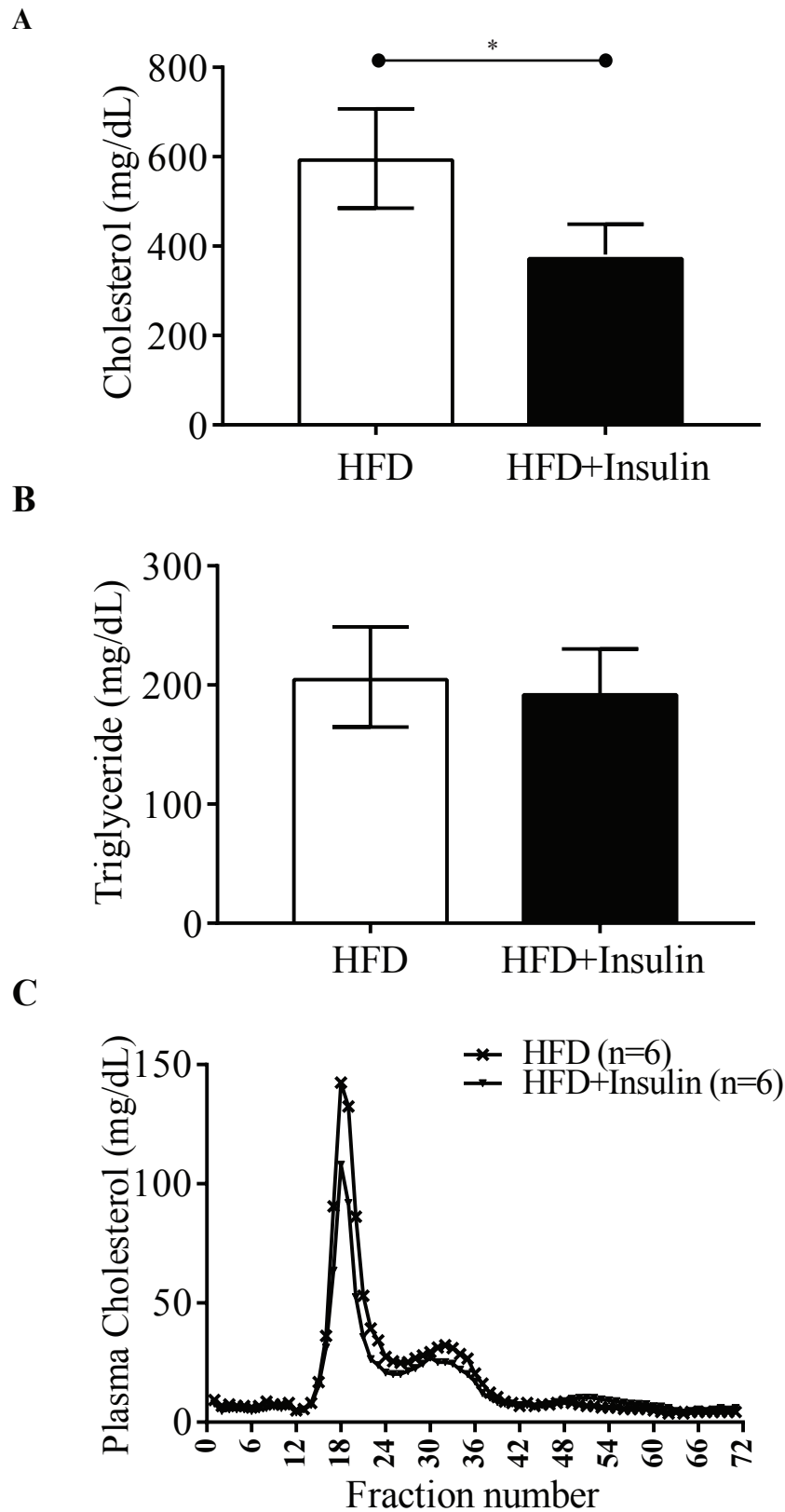
Supplemental Table I: Primers sequences used in RT-PCR. F = forward, R = reverse

Gene	Primers (5'-3')		Access Number
<i>Tnfa</i>	F	CCACCACGCTCTTCTGTCTAC	NM_013693.3
	R	AGGGTCTGGGCCATAGAACT	
<i>Il6</i>	F	TGATGCACTTGCAGAAAACA	NM_031168.2
	R	ACCAGAGGAAATTTTCAATAGGC	
<i>Vcam1</i>	F	CCGGCATATACGAGTGTGAA	NM_011693.3
	R	TCGGGCGAAAAATAGTCCT	
<i>Ccr7</i>	F	CAAACAGGAGCTGATGTCCA	NM_007719.2
	R	GTCTCTCTCCAGCTAGCCCA	
<i>Cxcl10</i>	F	CTCATCCTGCTGGGTCTGAG	NM_021274.2
	R	CCTATGGCCCTCATTCTCAC	
<i>Inos (Nos2)</i>	F	TGAAGAAAACCCCTTGTGCT	NM_010927.4
	R	TTCTGTGCTGTCCCAGTGAG	
<i>Arg2</i>	F	AGAAGCTGGCTTGCTGAAGA	NM_009705.3
	R	AGGGATCATCTTGTGGGACA	
<i>Ccl17</i>	F	TGCTTCTGGGGACTTTTCTG	NM_011332.3
	R	ATAGGAATGGCCCCTTTGAA	
<i>Cd206 (Mrc1)</i>	F	TGGCATGTCCTGGAATGAT	NM_008625.2
	R	CAGGTGTGGGCTCAGGTAGT	

Supplemental Figures

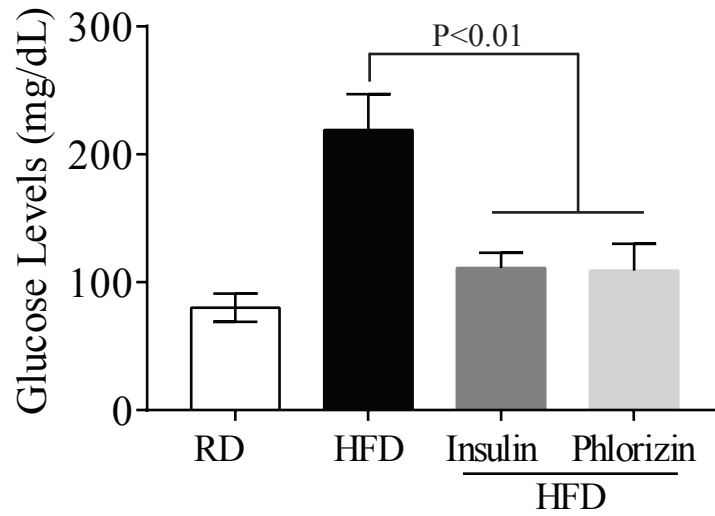


Supplemental Figure I. (A) Fat mass (Total, Abdominal and Visceral) (B) Glucose tolerance test (IPGTT) (C) Time course of plasma fasting IGF-1 levels.

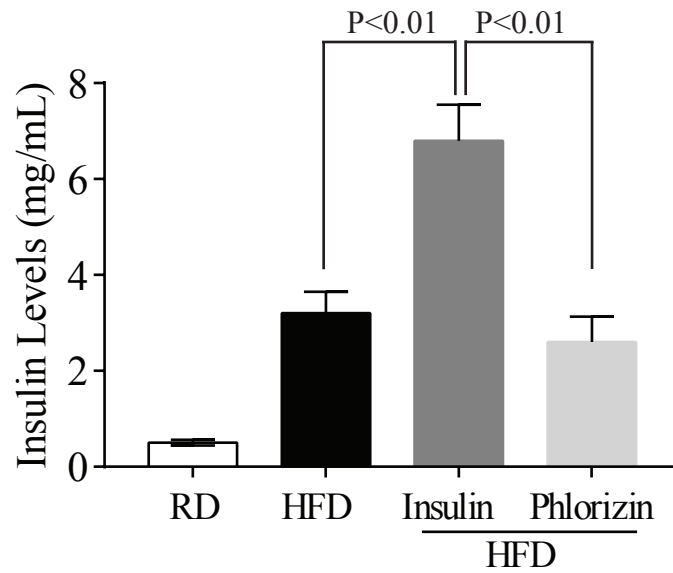


Supplemental Figure II. (A and B) Total plasma cholesterol (A) and triglycerides (B) of HFD-fed control and insulin treated ApoE^{-/-} mice (C) fast performance liquid chromatography gel-filtration for cholesterol concentration.

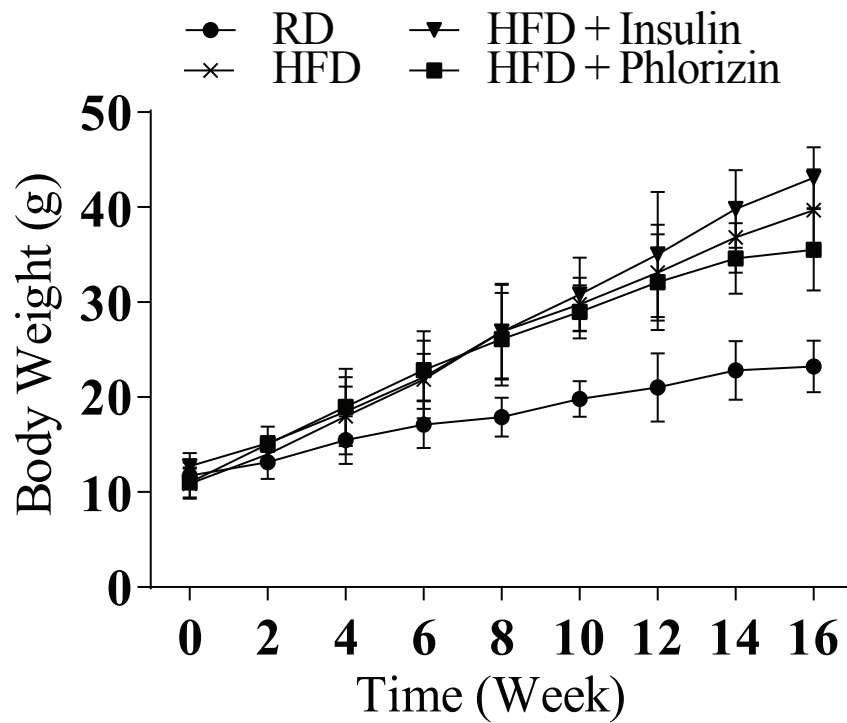
A



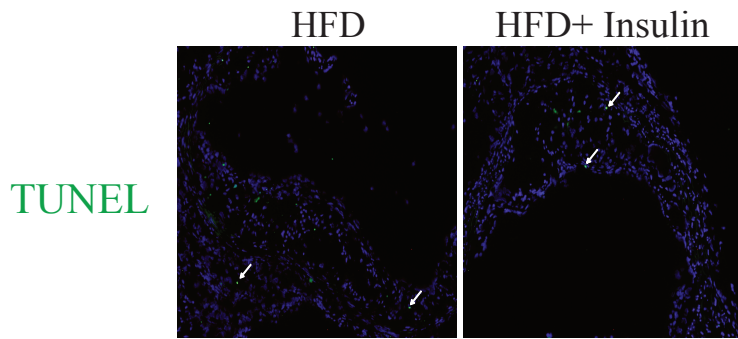
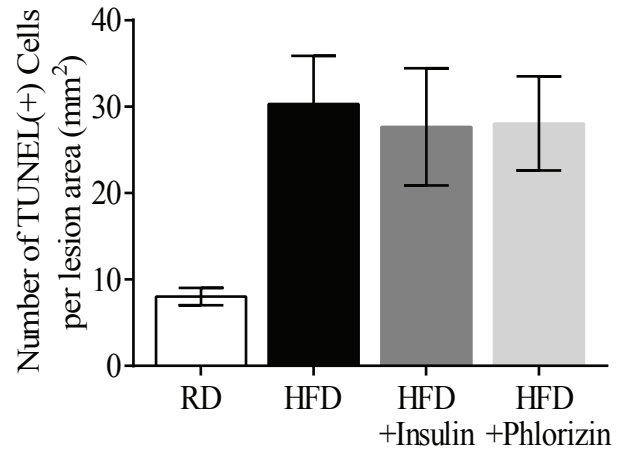
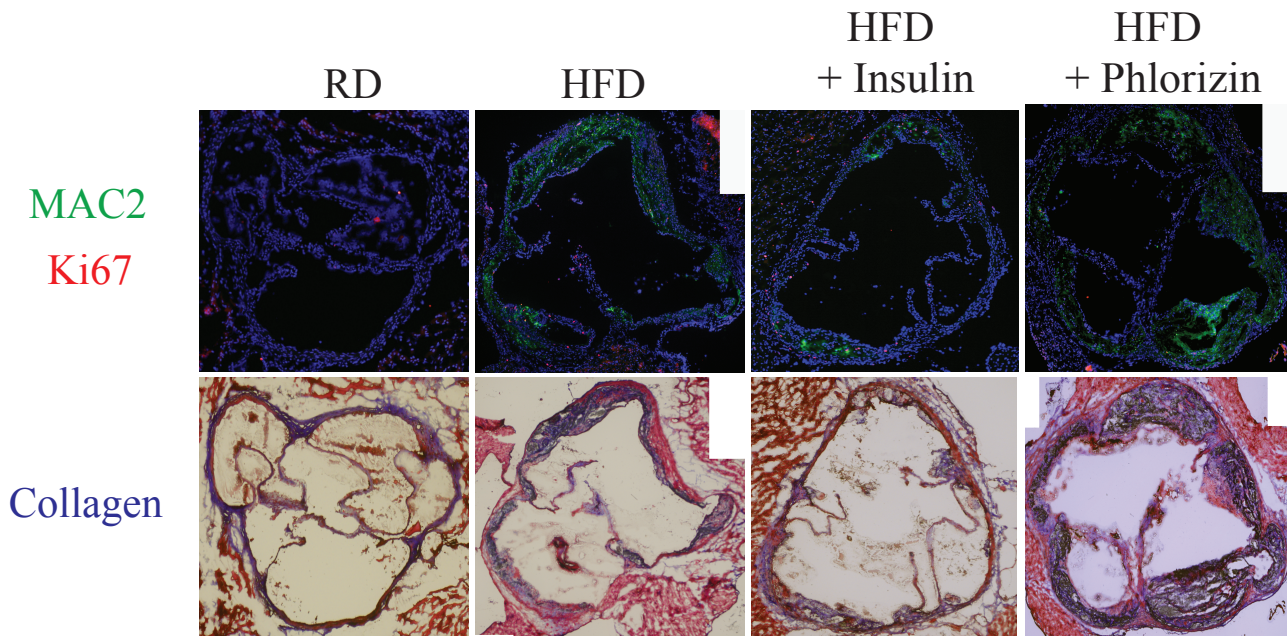
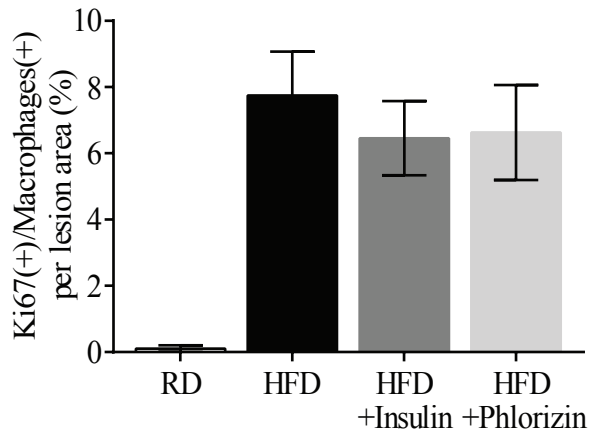
B



Supplemental Figure III. (A and B) Fasting plasma glucose (A) and insulin (B) measurements from control and HFD-fed control, Phlorizin and insulin treated ApoE^{-/-} mice.

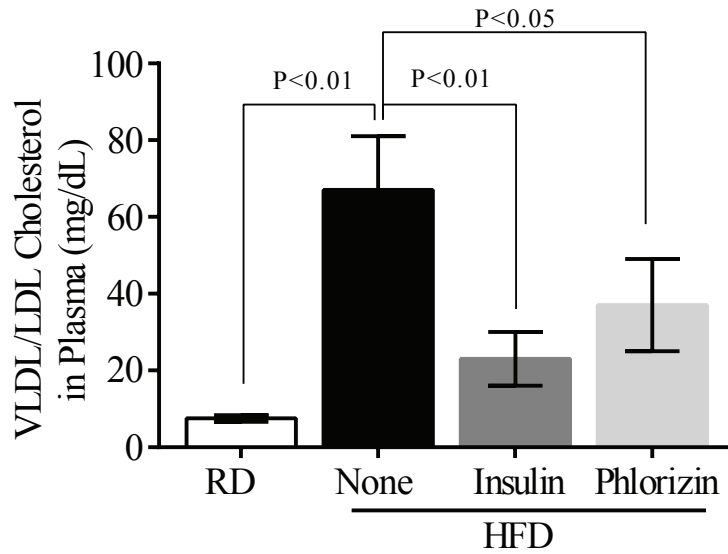


Supplemental Figure IV. Body weights of experimental animals during HFD feeding on insulin or Phlorizin-treated ApoE^{-/-} mice.

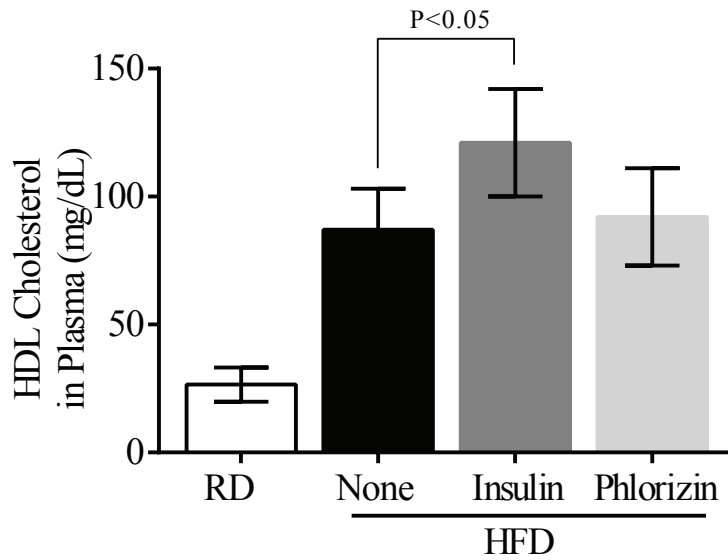
A**B****C****D**

Supplemental Figure V. (A-B) Ki67 staining and quantification of macrophage proliferation (B). (C and D) TUNEL staining (C) and quantification of apoptosis (D).

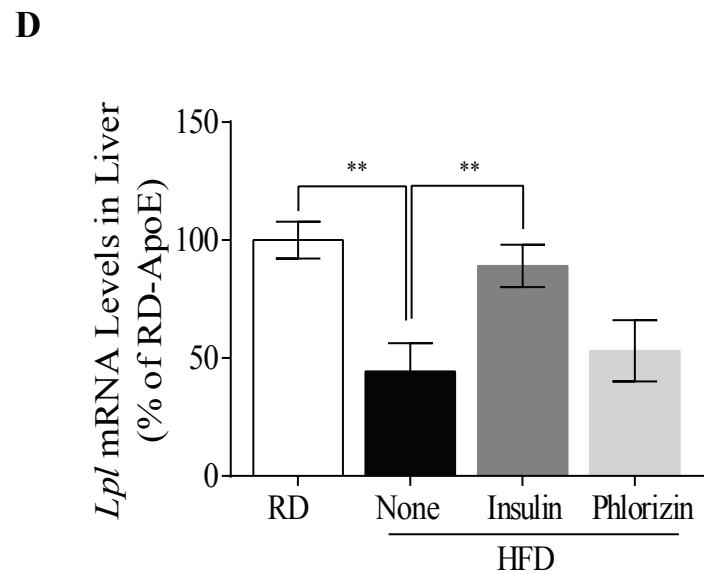
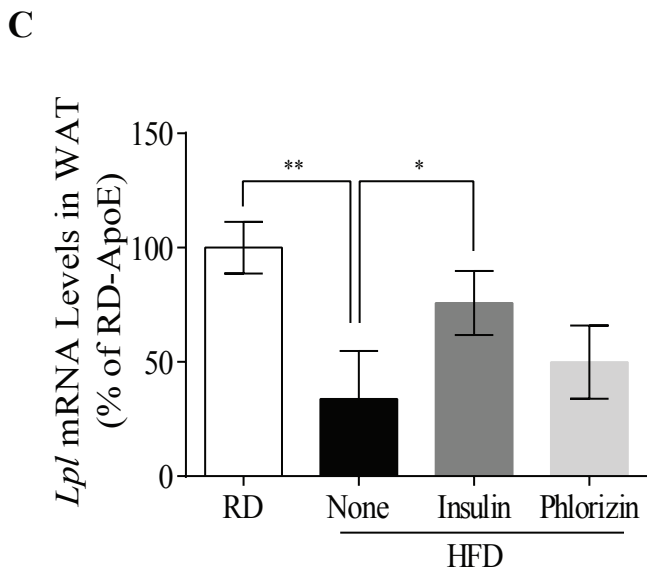
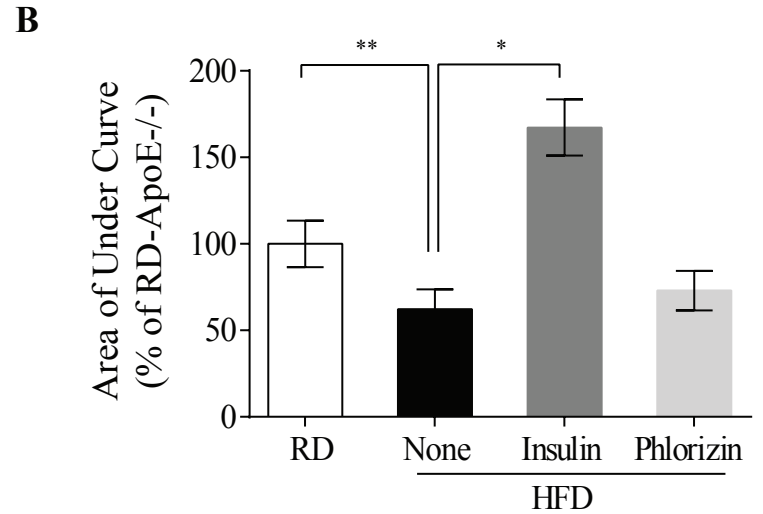
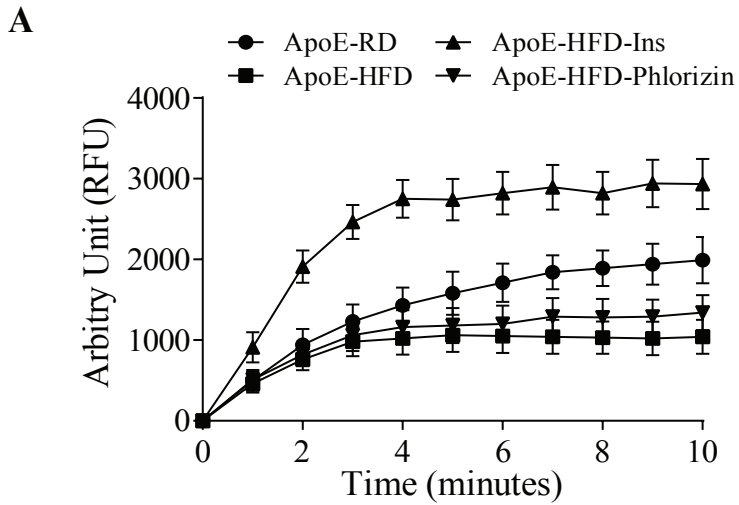
A



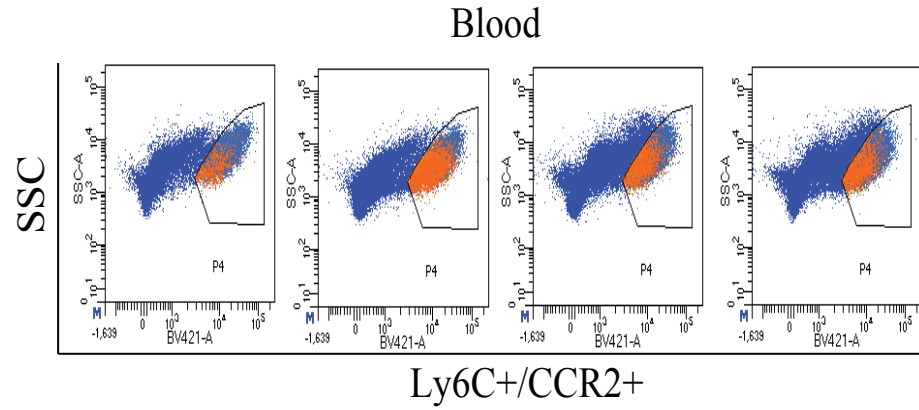
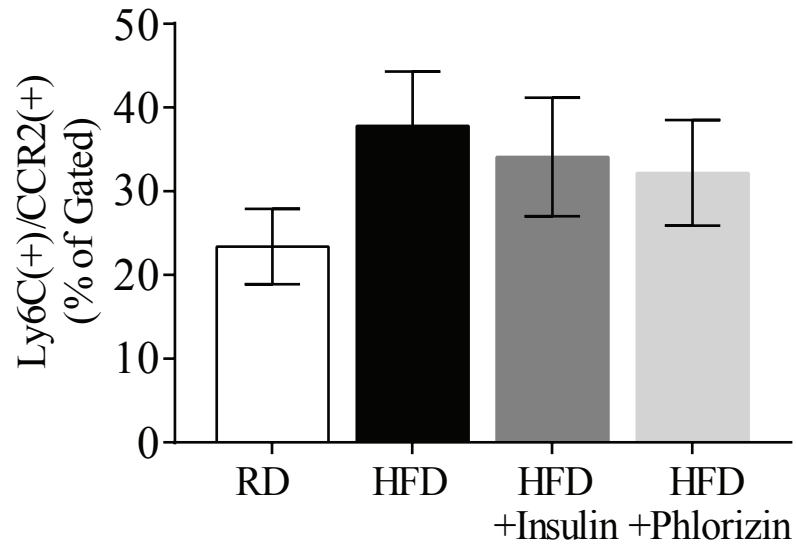
B



Supplemental Figure VI. (A and B) Plasma levels of VLDL/LDL (A) and HDL (B) from control and insulin or phlorizin treated HFD-ApoE^{-/-} mice.

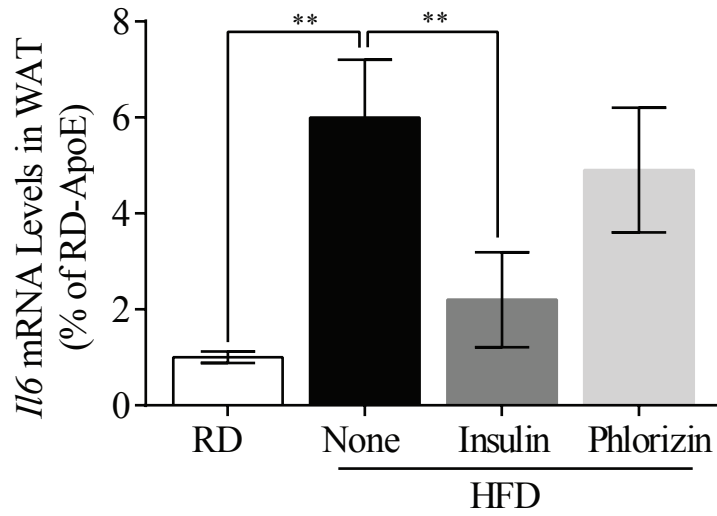


Supplemental Figure VII. (A and B) Time course of plasma LPL activity and quantification of activity (AUC) in control and insulin or phlorizin treated HFD-ApoE^{-/-} mice. (C and D) level of *Lpl* mRNA in WAT (C) and liver (D).

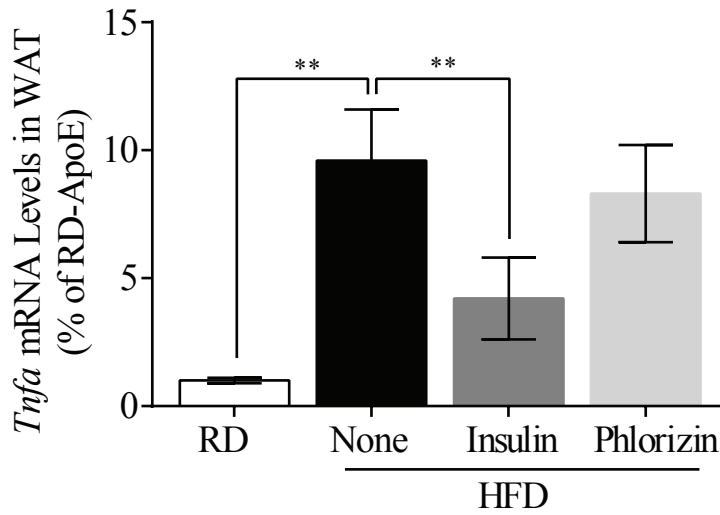
A**B**

Supplemental Figure VIII. (A) Circulating Ly6C+/CCR2+ monocyte levels in blood from control and insulin or phlorizin treated HFD-ApoE^{-/-} mice. (B) Quantification of FACS analysis.

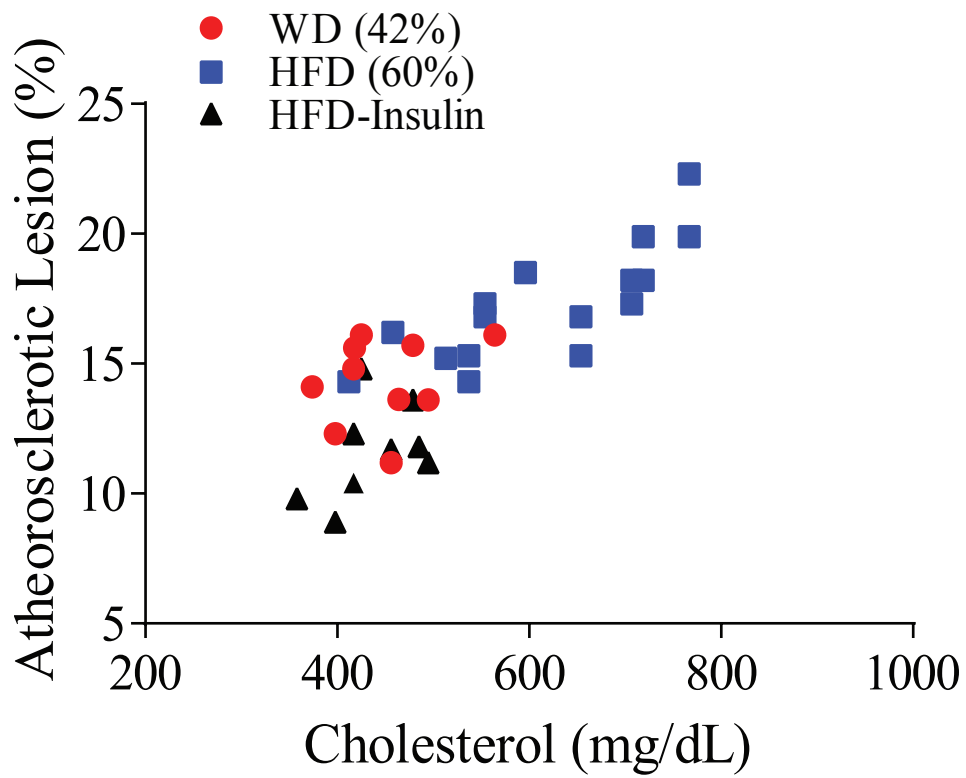
A



B



Supplemental Figure IX. (A and B) *Tnfa* (A) and *Il6* (B) mRNA expressions in subcutaneous WAT from control and insulin or phlorizin treated HFD-ApoE^{-/-} mice.



Supplemental Figure X. Correlations between plasma cholesterol levels and atherosclerosis events.