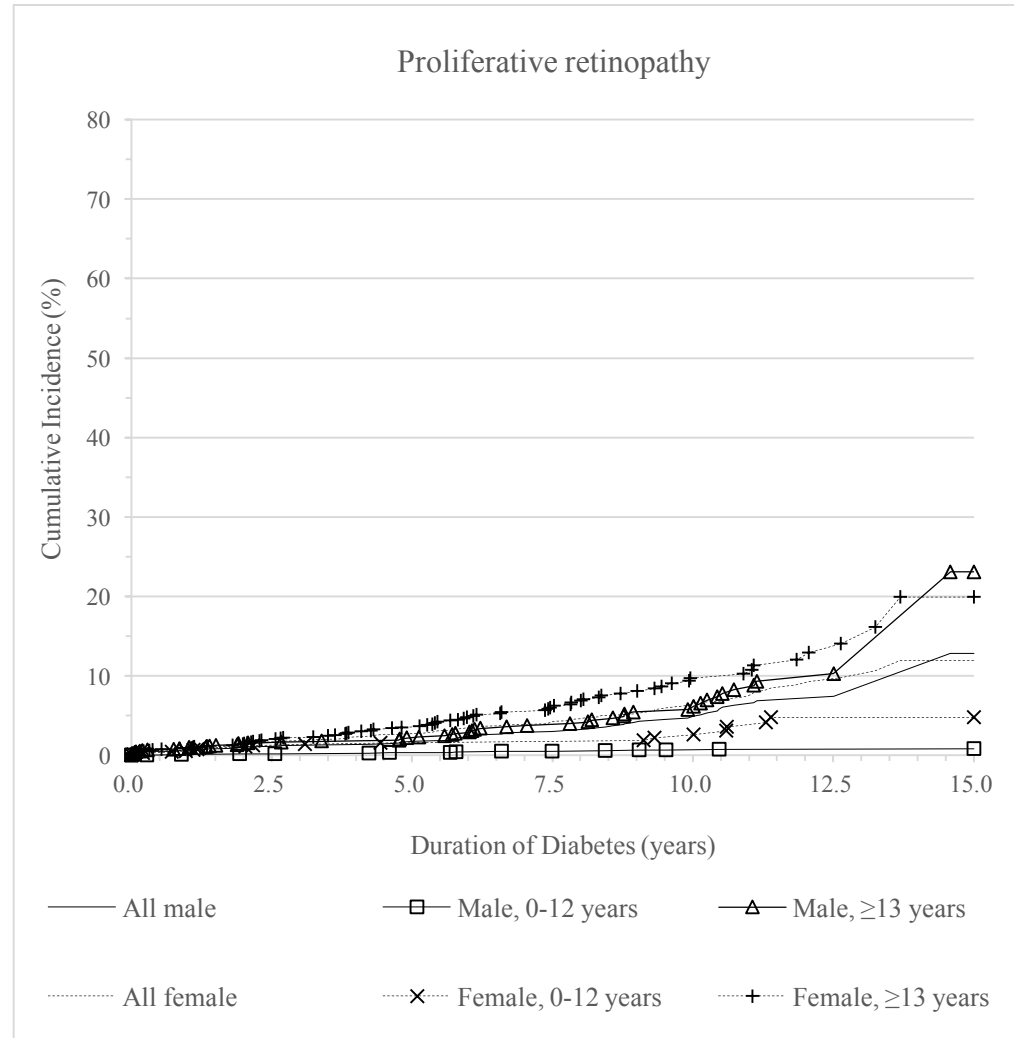
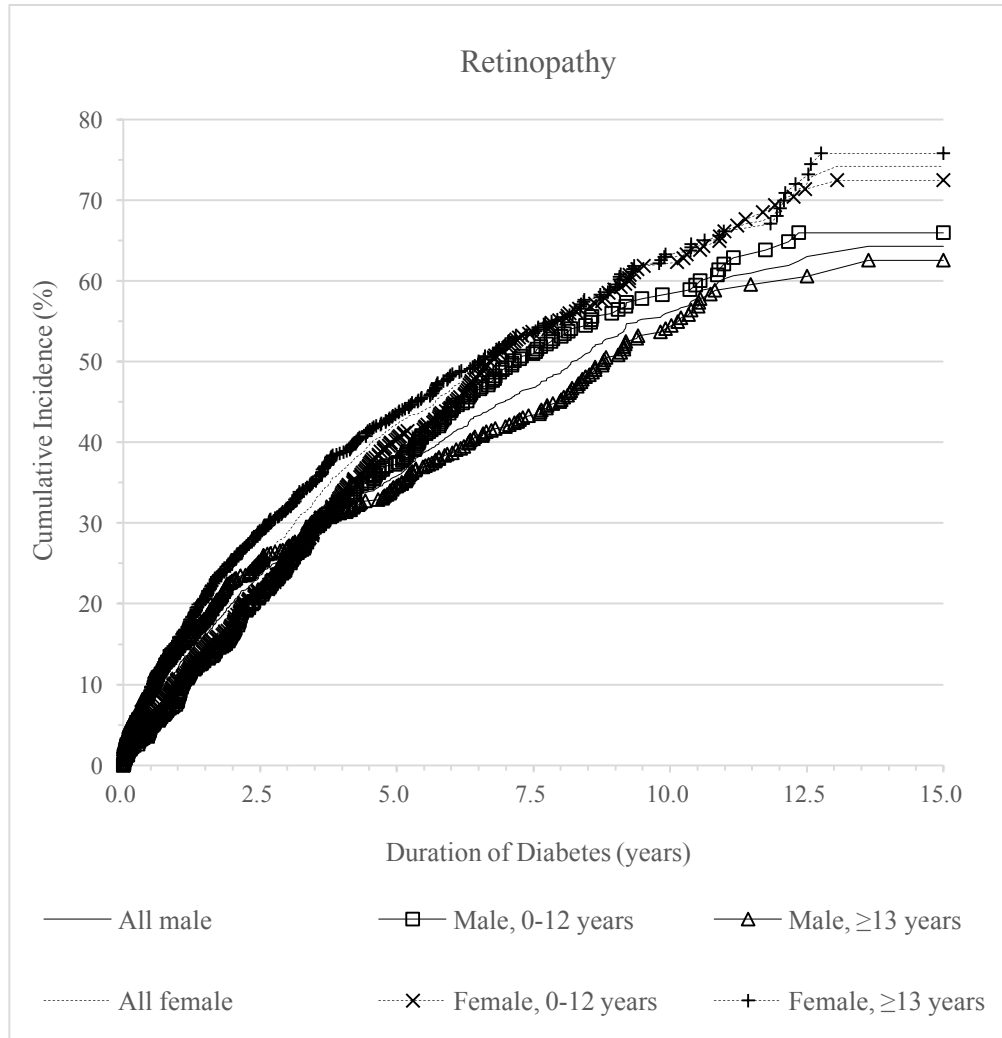
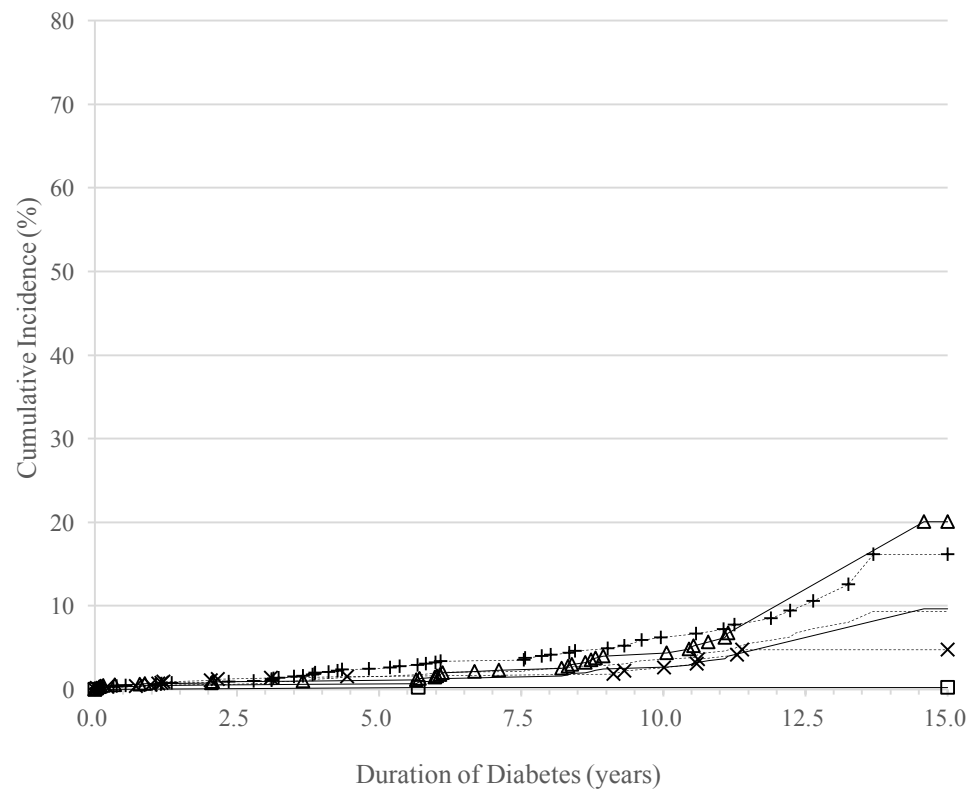


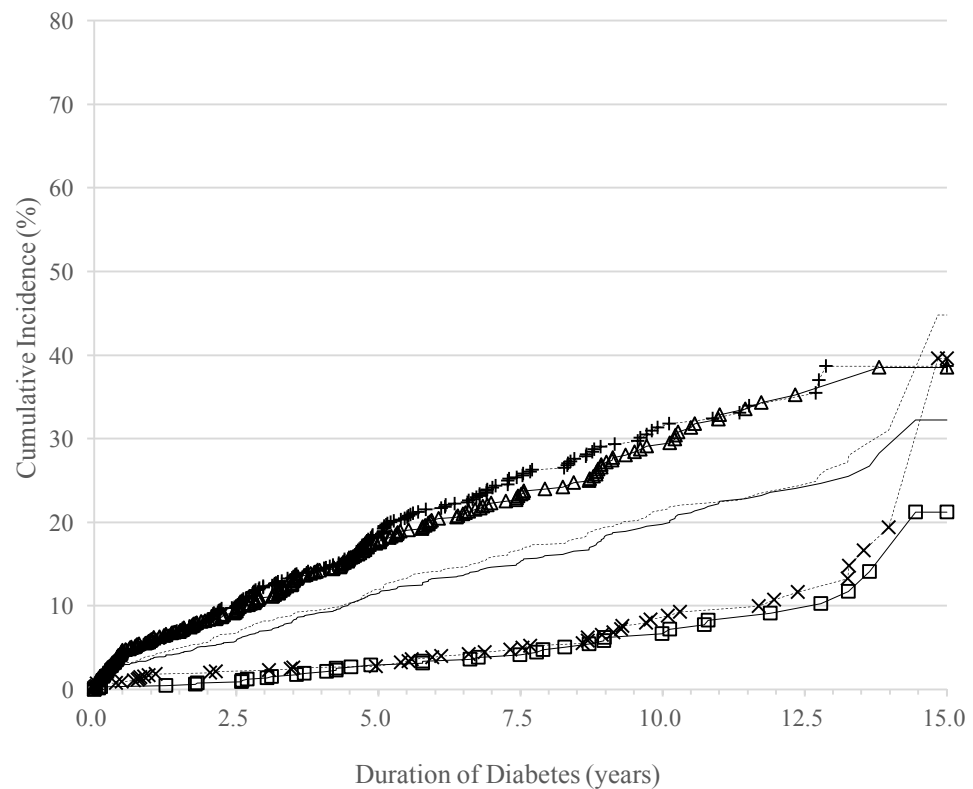
Supplementary Figure 1: Age-sex-specific cumulative incidences of diabetes complications according to duration of diabetes in patients with type 1 diabetes (early-onset: 0-12 years, late-onset: ≥ 13 years)



Sight-threatening diabetic retinopathy



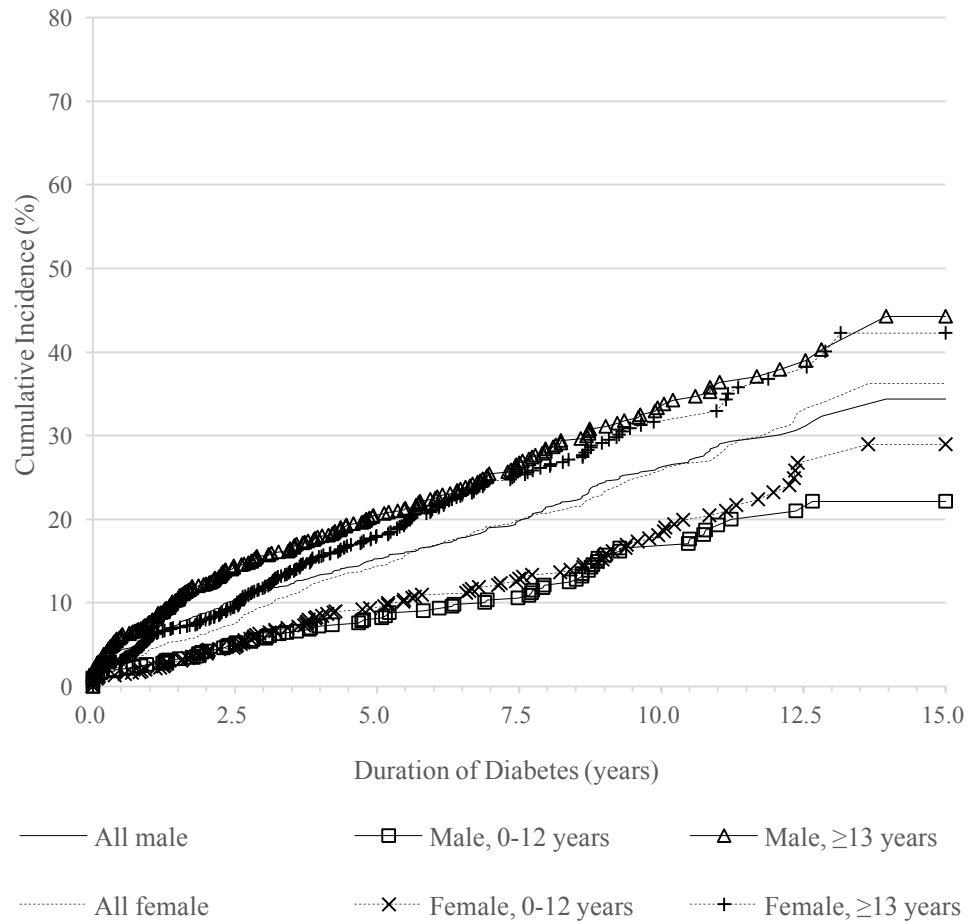
Neuropathy



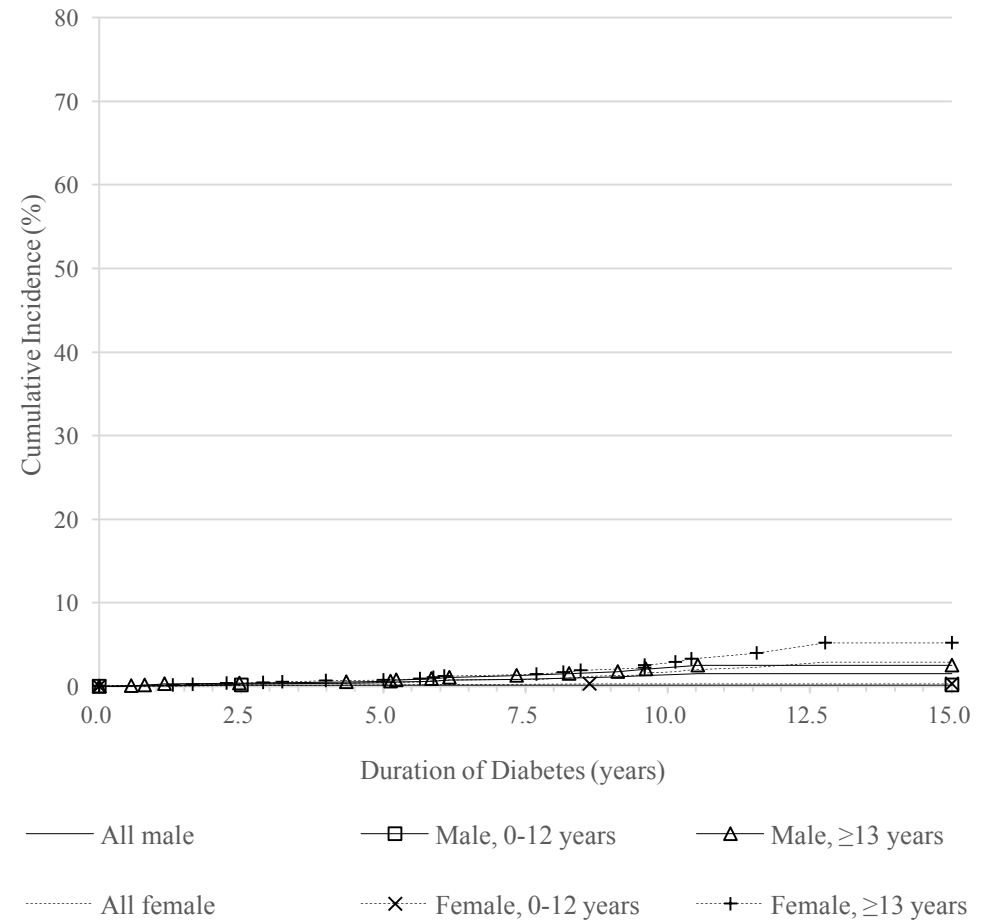
— All male —□— Male, 0-12 years —△— Male, ≥13 years
 All female ×..... Female, 0-12 years +..... Female, ≥13 years

— All male —□— Male, 0-12 years —△— Male, ≥13 years
 All female ×..... Female, 0-12 years +..... Female, ≥13 years

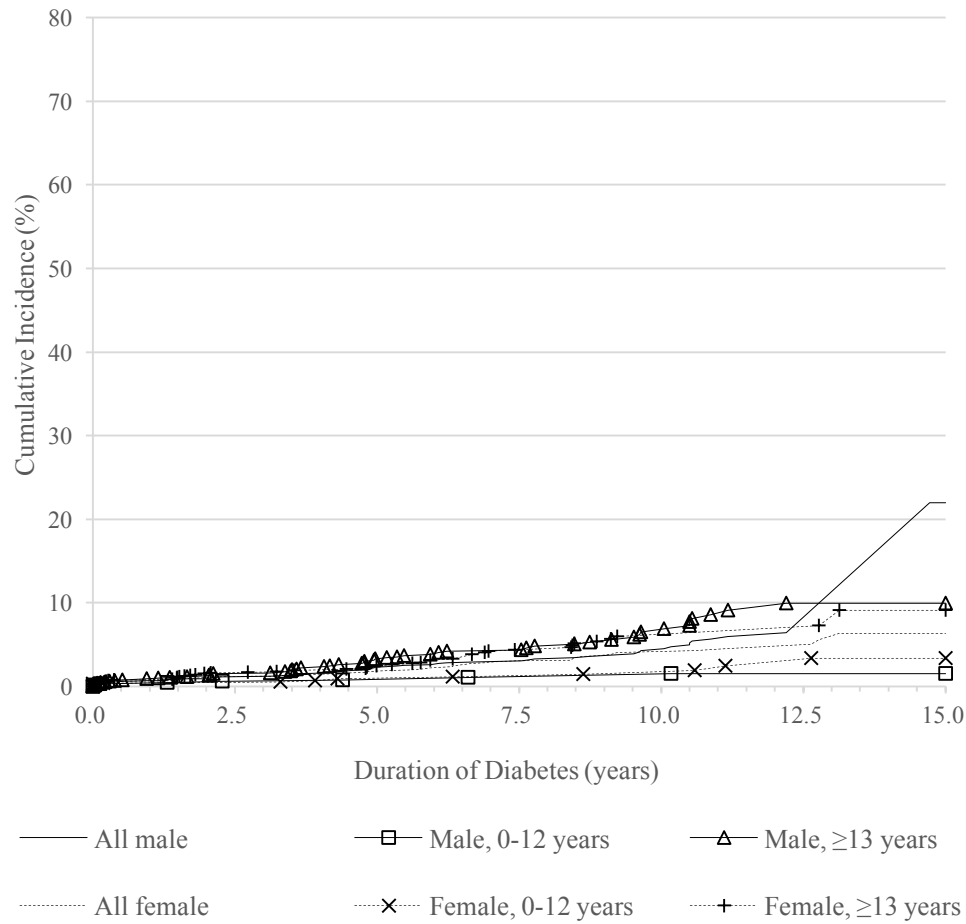
Nephropathy



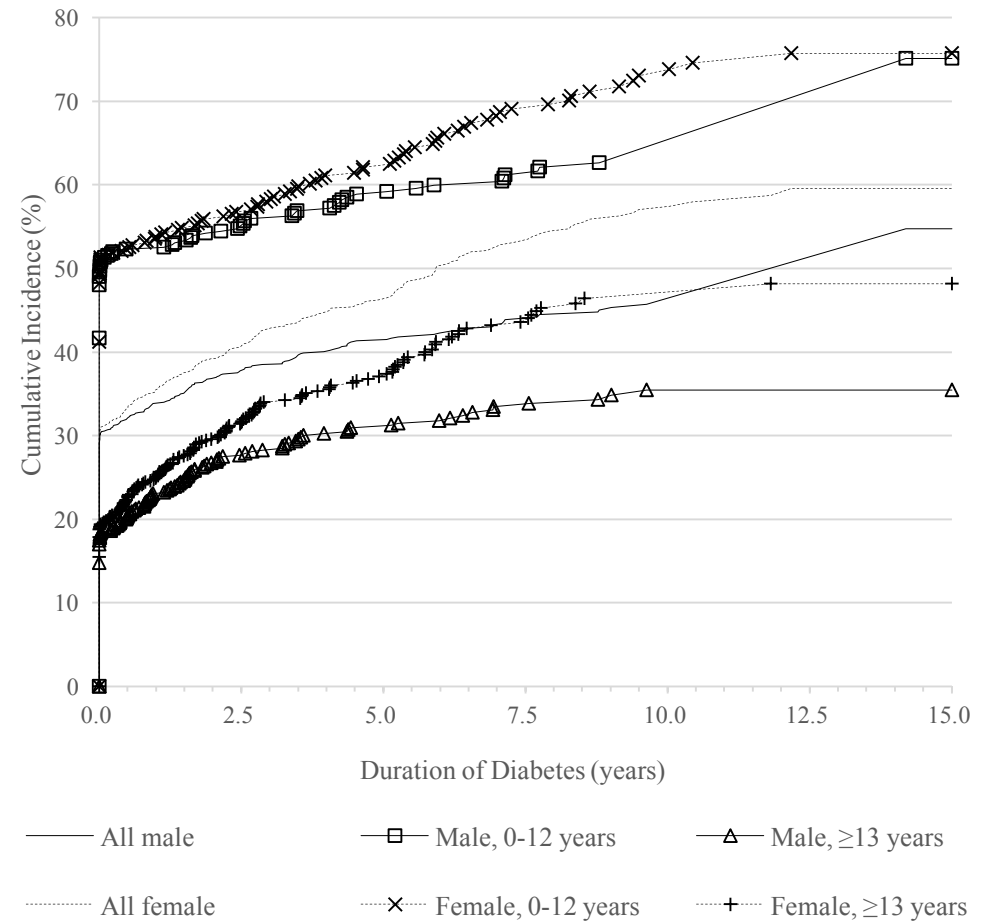
Renal failure

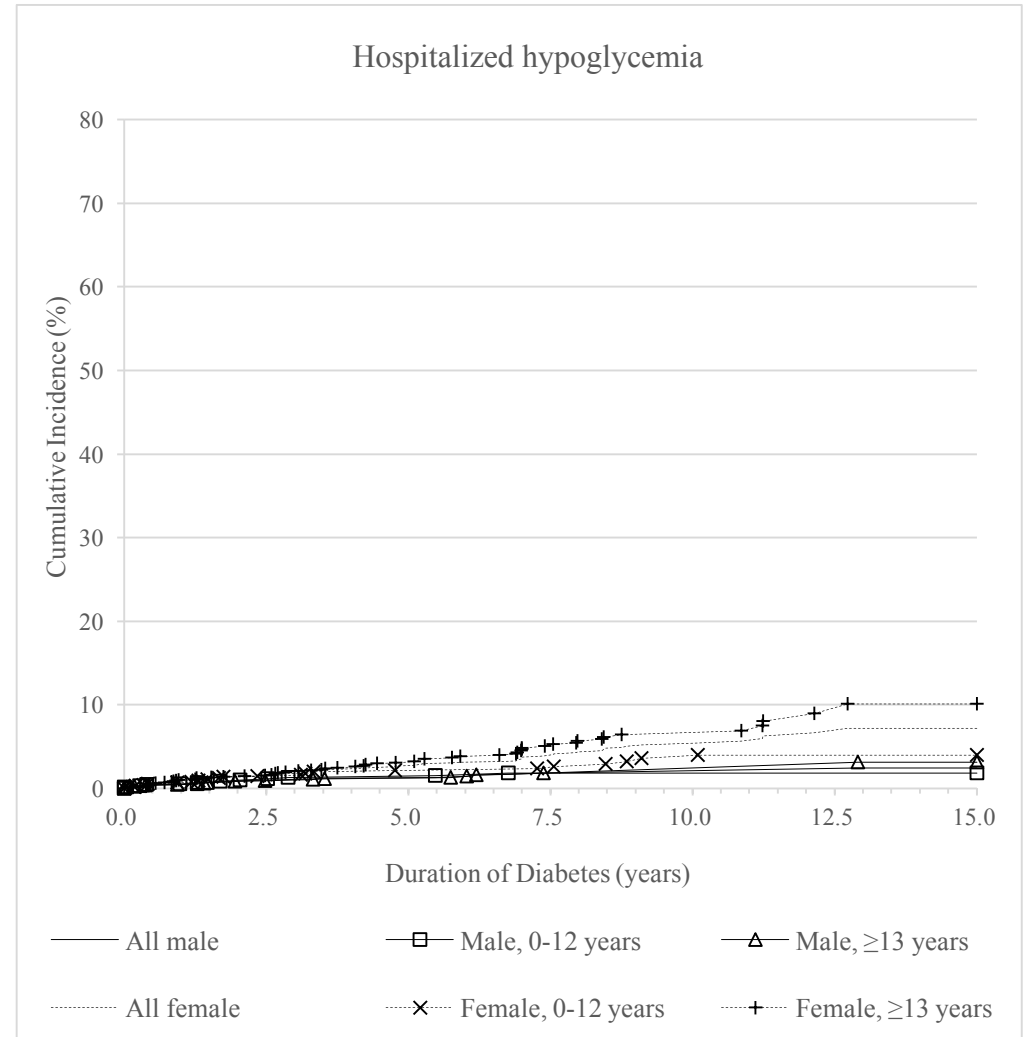
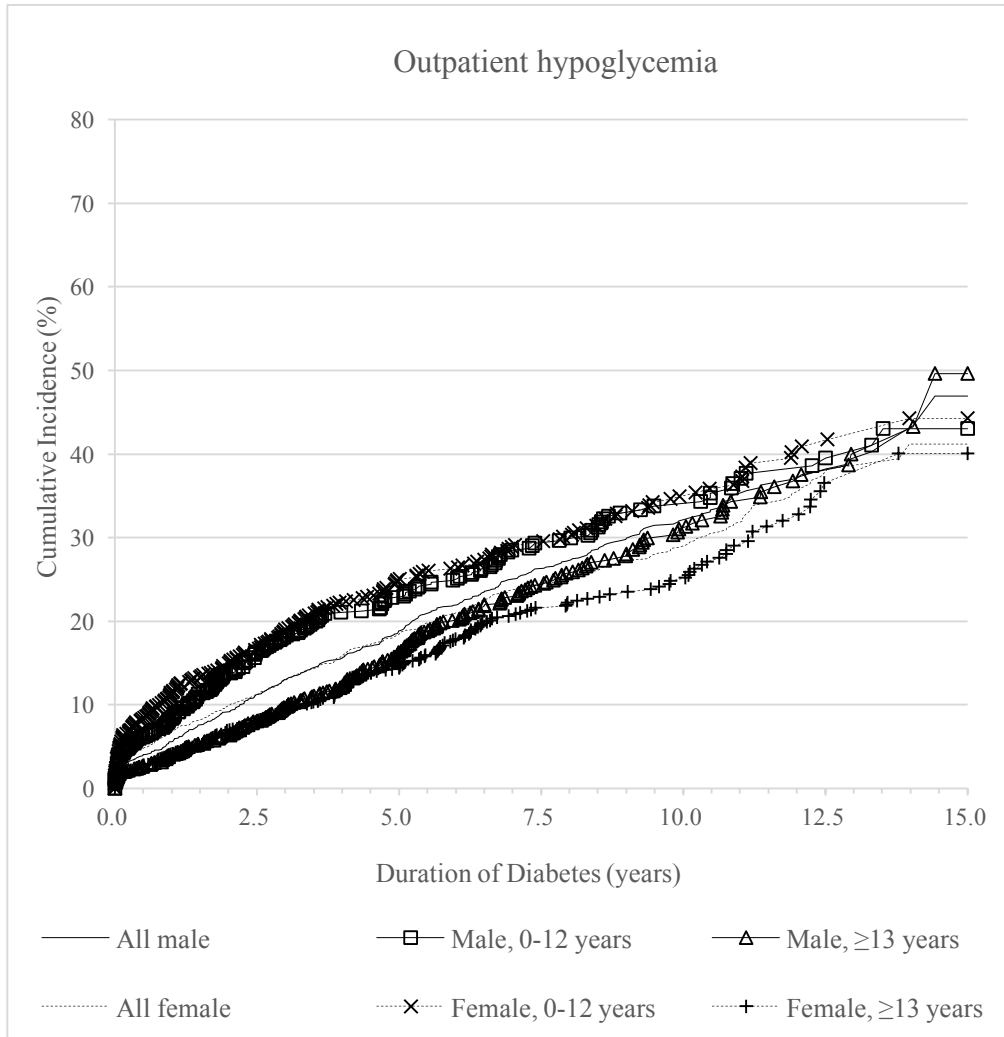


Cardiovascular disease



Diabetic ketoacidosis





Note:

p value for comparison of cumulative incidence of retinopathy for male vs. female was 0.0006, for male, early vs. late-onset was 0.4553, for female, early vs. late-onset was 0.0908.

p value for comparison of cumulative incidence of proliferative retinopathy for male vs. female was 0.0567, for male, early vs. late-onset was 0.0013, for female, early vs. late-onset was <.0001.

p value for comparison of cumulative incidence of sight-threatening diabetic retinopathy for male vs. female was 0.0405, for male, early vs. late-onset was <.0001, for female, early vs. late-onset was <.0001.

p value for comparison of cumulative incidence of neuropathy for male vs. female was 0.4050, for male, early vs. late-onset was <.0001, for female, early vs. late-onset was <.0001.

p value for comparison of cumulative incidence of nephropathy for male vs. female was 0.6191, for male, early vs. late-onset was <.0001, for female, early vs. late-onset was <.0001.

p value for comparison of cumulative incidence of renal failure for male vs. female was 0.4222, for male, early vs. late-onset was 0.0078, for female, early vs. late-onset was 0.0003.

p value for comparison of cumulative incidence of cardiovascular disease for male vs. female was 0.4655, for male, early vs. late-onset was <.0001, for female, early vs. late-onset was 0.0004.

p value for comparison of cumulative incidence of diabetic ketoacidosis for male vs. female was 0.0015, for male, early vs. late-onset was <.0001, for female, early vs. late-onset was <.0001.

p value for comparison of cumulative incidence of outpatient hypoglycemia for male vs. female was 0.4095 for male, early vs. late-onset was 0.0097, for female, early vs. late-onset was <.0001.

p value for comparison of cumulative incidence of hospitalized hypoglycemia for male vs. female was <.0001, for male, early vs. late-onset was 0.9600, for female, early vs. late-onset was 0.0113.